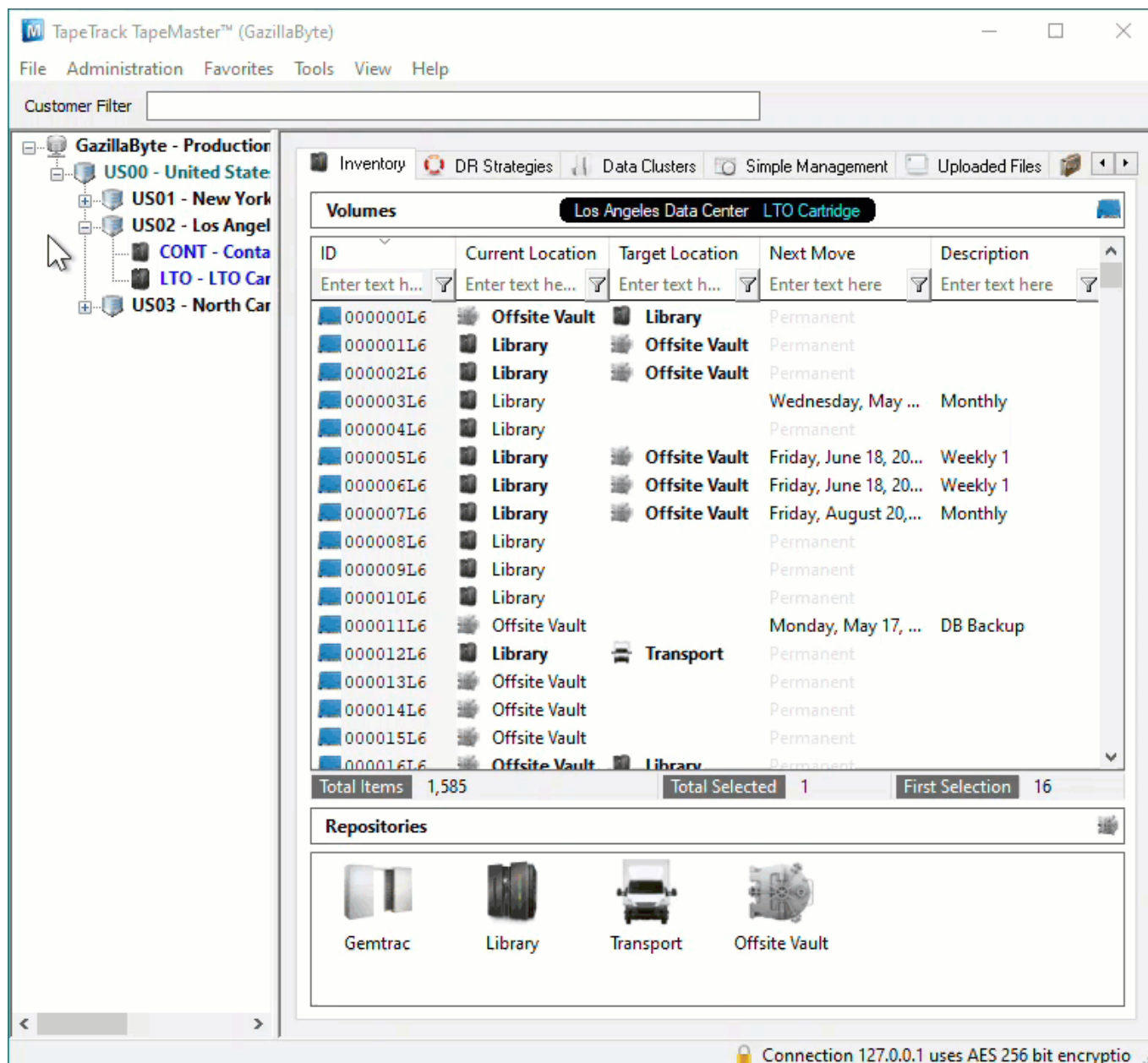


Adding and Maintaining Customers

A [Customer](#) is an owner of [Volumes](#). This page details how to Add or Delete [Customers](#).

Add Customer

To add a [Customer](#), right-click on the [Server Node](#) of the [Customer Tree](#) and select Add Customer.



This will launch the Edit New Customer window.

Identity

The first tab on the Add Customer window is the Identity tab.

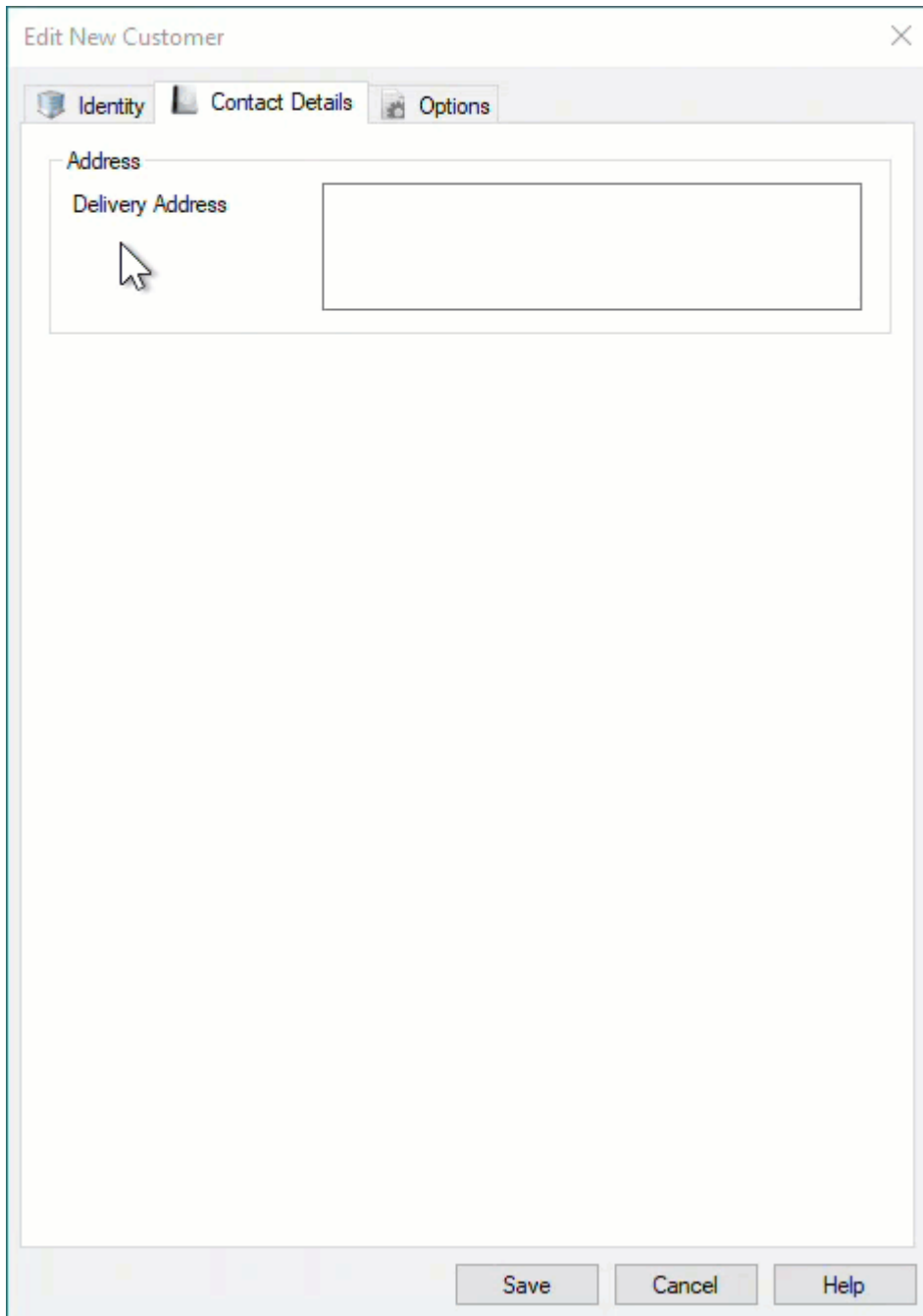
Enter the [Customer-ID](#) and a [Customer Description](#).

You can add up to four alphanumeric characters as the [Customer-ID](#) and up to forty alphanumeric characters for the [Customer Description](#).

The screenshot shows a software window titled "Edit New Customer" with a close button in the top right corner. Below the title bar are three tabs: "Identity" (selected), "Contact Details", and "Options". Under the "Identity" tab, there is a section titled "Customer Attributes" containing two input fields: "Customer-ID" and "Customer Description". A mouse cursor is pointing at the "Customer Description" field. At the bottom of the window are three buttons: "Save", "Cancel", and "Help".

Contact Details

Enter the contact details for the [Customer](#) in the Contact Details tab.



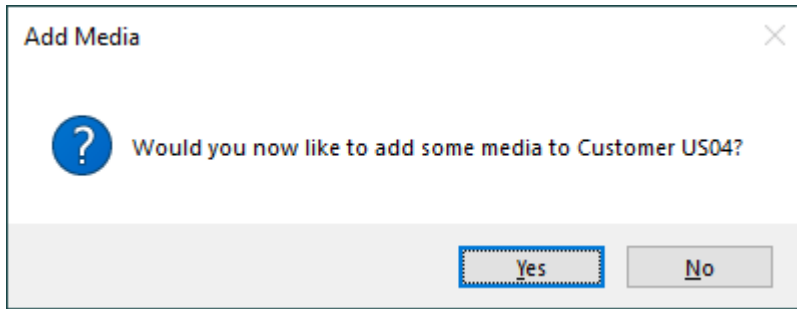
Options

The Options tab can be utilized to set specific details about a [Customer](#). These details are accessible at any point by right-clicking the [Customer](#), on the [Customer Tree](#) and selecting Properties.

Property	Value
Hide Customer	False
Disallow Customer Duplicates	False
Disallow Global Duplicates	False
Volume Lock	False
Hide No Children	False
Allowable Media-ID Filter	
Maximum number of Media-IDs	0
Holiday Group	
Customer Category	0
Parent Customer	<No Selection>
Account Number	0
Long Barcode Attribute	<Not Selected>

- **Hide Customer** when set to true removes the [Customer](#) from view in the [Customer Tree](#).
- **Disallow Customer Duplicates** stops the duplication of [Volume-ID's](#) across the [Customer Media Types](#).
- **Disallow Global Duplicates** stops the duplication of [Volume-ID's](#) across all [Customers](#).
- **Volume Lock** stops any [Volumes](#) moving within this [Customer](#).
- **Hide No Children** stops the display of this [Customer](#) unless showing children or has [Media](#) defined.
- **Allowable Media-ID Filter**, if set, restricts the allowable [Volume-ID](#) formats for this [Customer](#).
- **Maximum number of Media-ID's** that can be created for this [Customer-ID](#). 0=No limit.
- **Holiday Group** assigns a group for [Simple Management](#) calculations of holidays to avoid.
- **Customer Category** is an arbitrary number that can be set to group [Customers](#) for batch processing.
- **Parent Customer** displays the current [Customer](#) as a child under the selected [Customer](#).
- **Account Number** Iron Mountain (or other third-party) account number.
- **Long Barcode Attribute** adds un-hashed long Barcode to selected Attribute.

Once you click Save, TapeMaster will open a window asking if you'd like to add some **Media** to this **Customer**.



If yes is selected, then TapeMaster will display the Add **Media Types** for new Customer window. Create relevant **Media Type** by changing the Create option from False to True. Other fields, **Media-ID** and **Description** may be edited or customized to your required values.



If no **Media Description** is added, TapeMaster will display the **Media-ID**.

Add Media Types for new Customer

You can now add one or more Media Types (by enabling the "Create" property).

A Media Type is a collection of media, usually group by technology type.

While it is possible to add a media type for each media type generation (i.e. LTO1, LTO2 etc), it is recommended that you group all technology generations together (i.e. LTO).

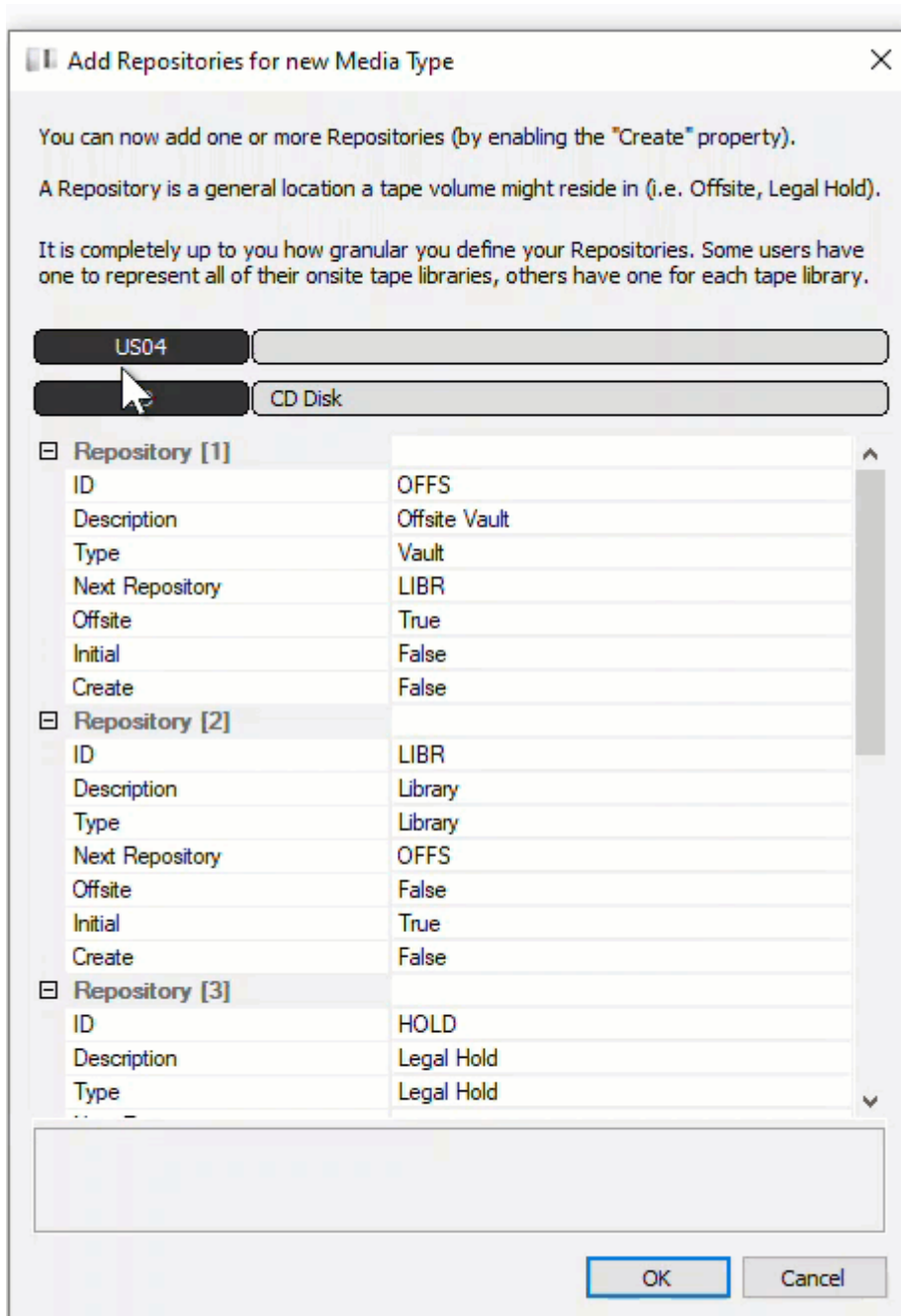
US04

Media Type[1]	
ID	LTO
Description	LTO Cartridge
Create	False
Media Type[2]	
ID	DLT
Description	DLT Cartridge
Create	False
Media Type[3]	
ID	359X
Description	IBM 359x Cartridge
Create	False
Media Type[4]	
ID	T10K
Description	T1000 Cartridge
Create	False

OK Cancel

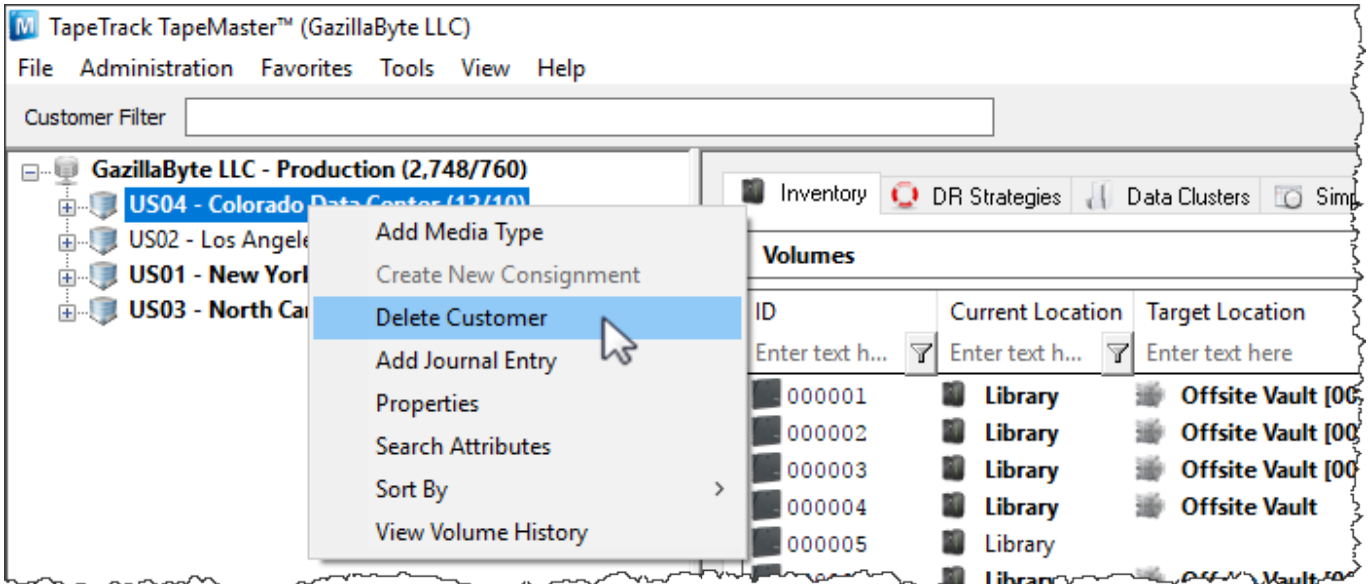
Click OK to continue.

The next prompt will be to add any required [Repositories](#). Create relevant [Repositories](#) by changing the Create option from False to True. Other fields, [Repository-ID](#) and [Description](#), may be edited or customized your required values.

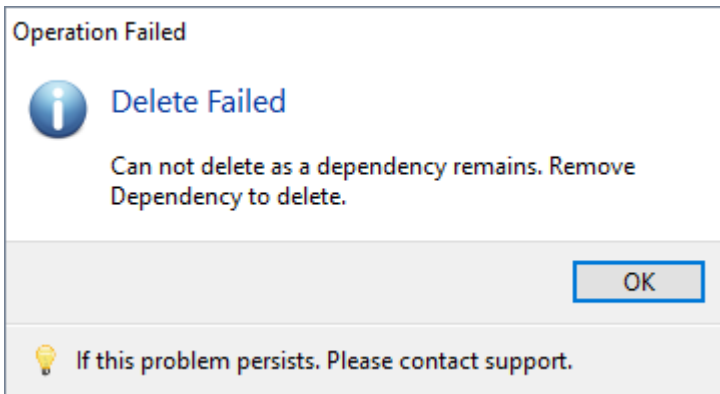


Delete Customer

To delete a [Customer](#), right-click on the [Customer](#) in the [Customer Tree](#) and select Delete Customer.

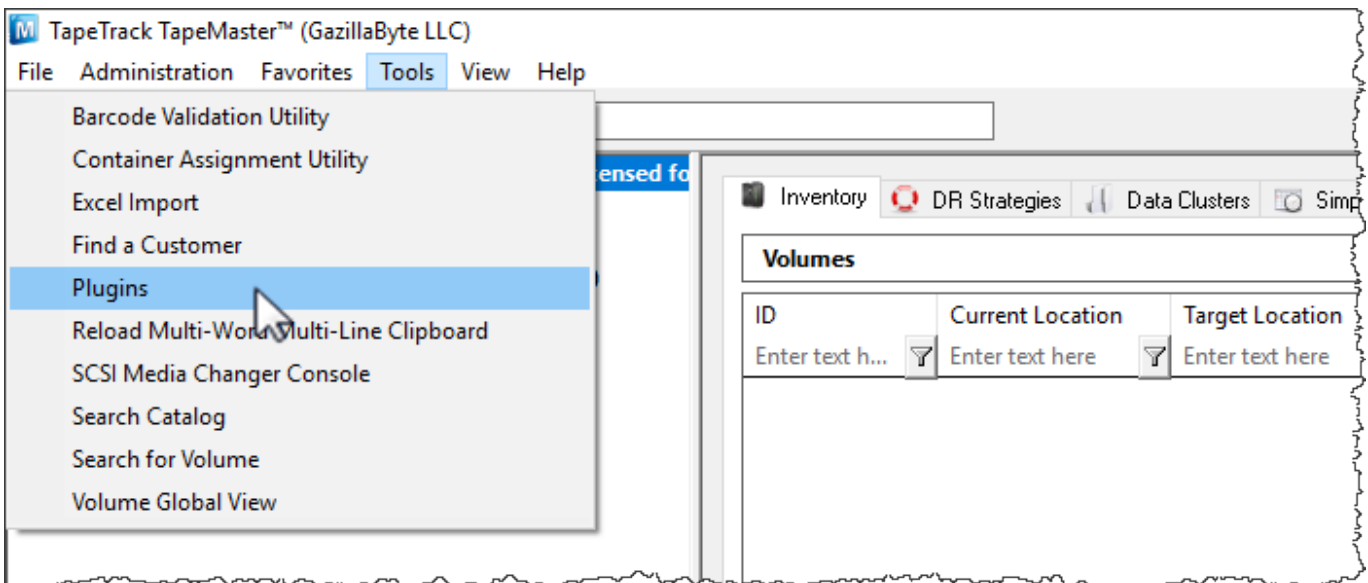


A **Customer** may only be deleted when it does not contain **Media Types**, **Repositories**, or **Volumes**.

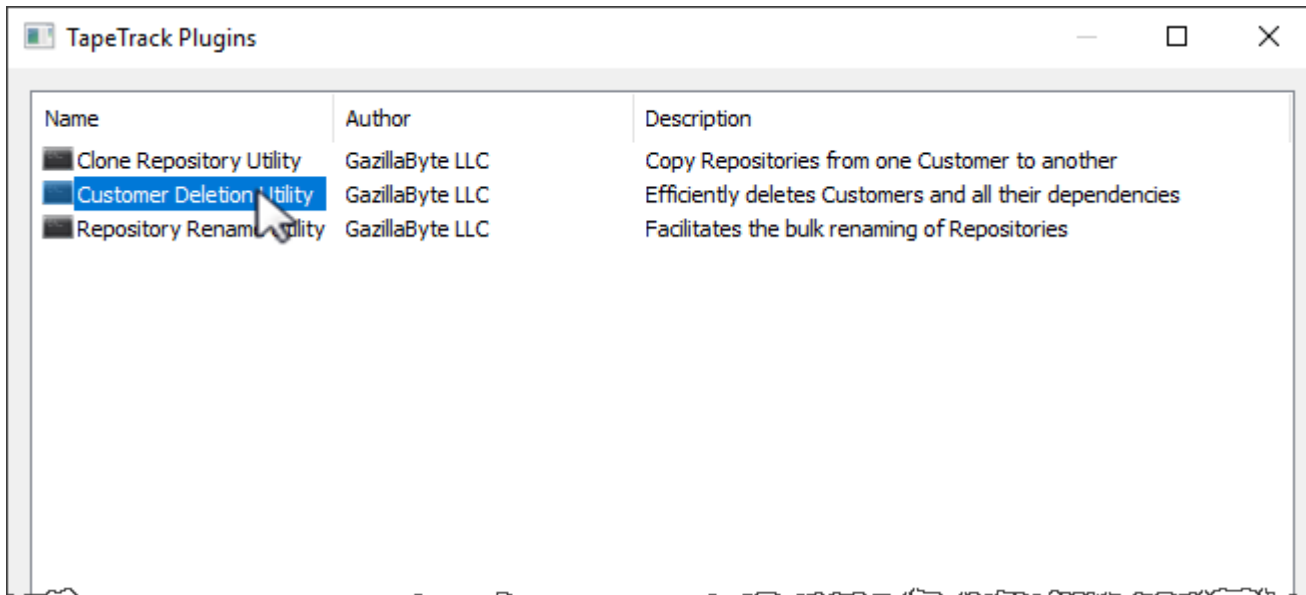


If you receive this error, delete all **Volumes**, then all **Repositories** and all **Media types** before deleting **Customer**.

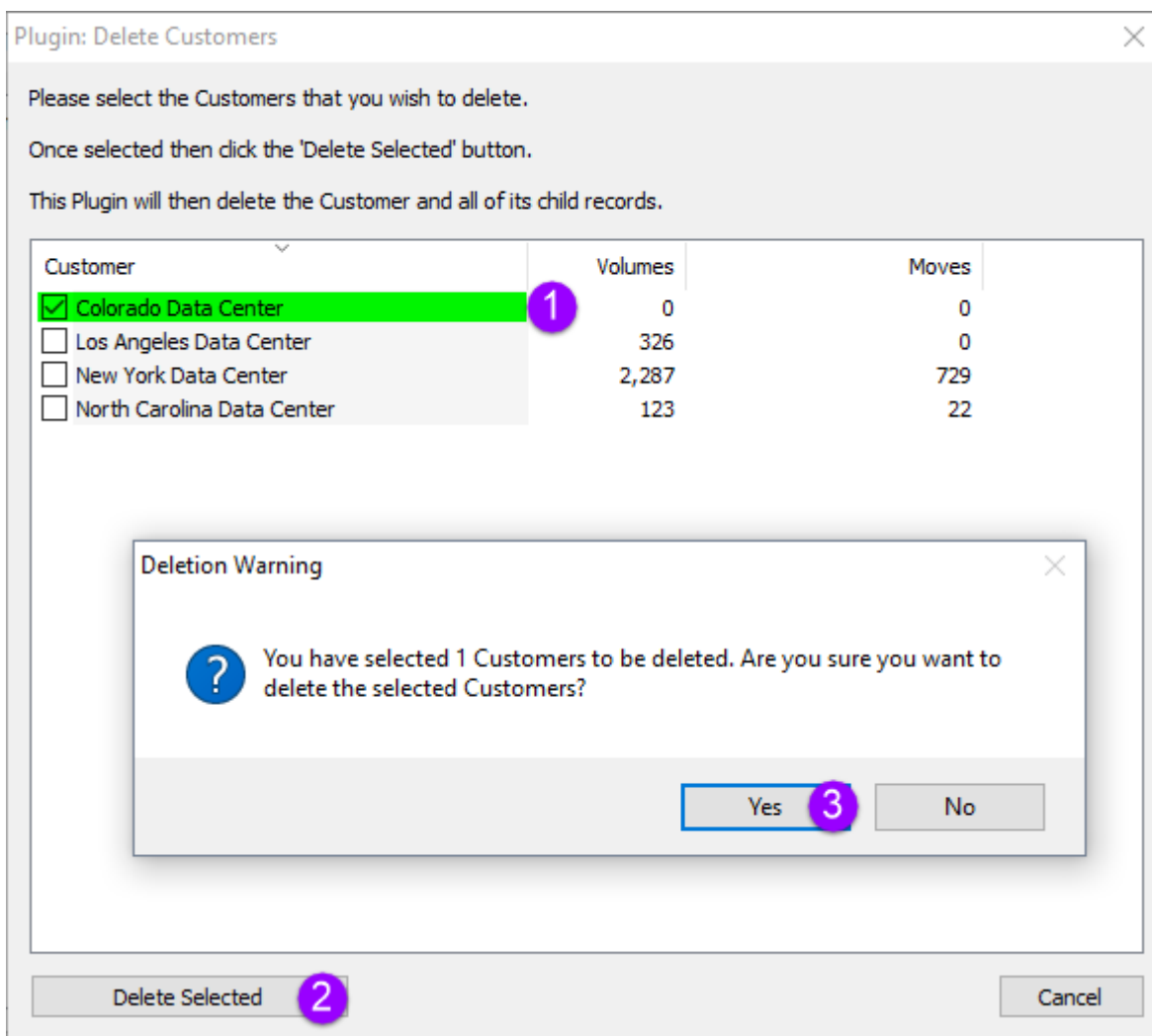
You can also delete **Customer** (without the need to remove **Volumes**, **Repositories** and media types first) by using the **Customer Delete** plugin. From the menu select **Tools** → **Plugins**



Select the **Customer Deletion Utility** by double-clicking.



Check each **Customer** (1) you wish to remove and click **Delete Selected** (2) and **Yes** (3) to the warning popup.



Exit out of the plugins windows using the X at the top right and press F5 in the **Customer Tree** to refresh information.

The screenshot shows the TapeTrack TapeMaster™ interface for GazillaByte LLC. The top navigation bar includes 'File', 'Administration', 'Favorites', 'Tools', 'View', and 'Help'. Below this is a 'Customer Filter' input field. The left sidebar displays a tree view with the following items:

- GazillaByte LLC - Production (2,736/751)
 - US02 - Los Angeles Data Center (326/0)
 - US01 - New York Data Center (2,287/729)
 - US03 - North Carolina Data Center (123/22)

A mouse cursor is hovering over an 'F5' refresh button. The right pane shows the 'Volumes' configuration section with the following settings:

Scope		ID
Customer	None Selected	Enter text
Media	None Selected	
List Options		
Hide un-selected	False	
Date Format	%A, %B %d, %Y	
Attribute Field	Description	

From: <https://rtfm.tapetrack.com/> - TapeTrack Documentation

Permanent link: <https://rtfm.tapetrack.com/master/customer?rev=1617934114>

Last update: 2025/01/21 22:07

