

Adding and Maintaining Customers

A [Customer](#) is an owner of [Volumes](#). This page details how to Add or Delete [Customers](#).

Add Customer

To add a [Customer](#), right-click on the [Server Node](#) of the [Customer Tree](#) and select Add Customer.

The screenshot displays the TapeTrack TapeMaster™ (GazillaByte) application window. The interface includes a menu bar (File, Administration, Favorites, Tools, View, Help) and a Customer Filter input field. The main area is divided into several sections:

- Customer Tree:** A hierarchical tree on the left showing the structure: GazillaByte - Production > US00 - United States > US01 - New York > US02 - Los Angeles > CONT - Containing > LTO - LTO Cartridge > US03 - North Carolina.
- Volumes Table:** A table titled "Los Angeles Data Center LTO Cartridge" with columns: ID, Current Location, Target Location, Next Move, and Description. The table contains 16 rows of data, including entries like "000000L6" with "Library" and "Offsite Vault" locations.
- Summary:** A row at the bottom of the table showing "Total Items: 1,585", "Total Selected: 1", and "First Selection: 16".
- Repositories:** A section below the table showing icons for "Gemtrac", "Library", "Transport", and "Offsite Vault".
- Status Bar:** A message at the bottom right states "Connection 127.0.0.1 uses AES 256 bit encryption".

This will launch the Edit New Customer window.

Identity

The first tab on the Add Customer window is the Identity tab.

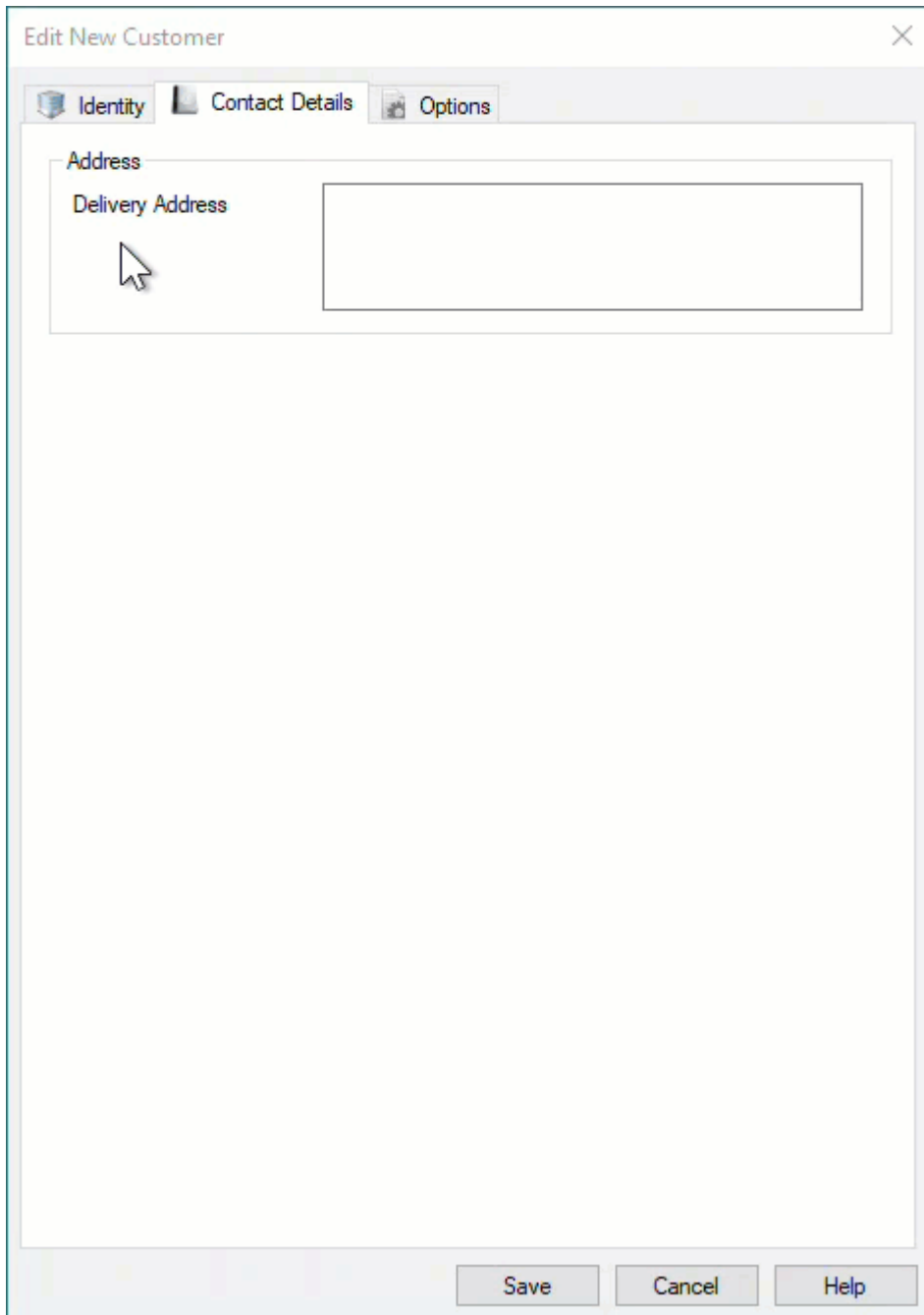
Enter the [Customer-ID](#) and a [Customer Description](#).

You can add up to four alphanumeric characters as the [Customer-ID](#) and up to forty alphanumeric characters for the [Customer Description](#).

The screenshot shows a software window titled "Edit New Customer" with a close button in the top right corner. Below the title bar are three tabs: "Identity" (selected), "Contact Details", and "Options". Under the "Identity" tab, there is a section titled "Customer Attributes" containing two input fields: "Customer-ID" and "Customer Description". A mouse cursor is positioned over the "Customer Description" field. At the bottom of the window, there are three buttons: "Save", "Cancel", and "Help".

Contact Details

Enter the contact details for the [Customer](#) in the Contact Details tab.



Options

The Options tab can be utilized to set specific details about a [Customer](#). These details are accessible at any point by right-clicking the [Customer](#), on the [Customer Tree](#) and selecting Properties.

Option	Value
Hide Customer	False
Disallow Customer Duplicates	False
Disallow Global Duplicates	False
Volume Lock	False
Hide No Children	False
Allowable Media-ID Filter	
Maximum number of Media-IDs	0
Holiday Group	
Customer Category	0
Parent Customer	<No Selection>
Account Number	0
Long Barcode Attribute	<Not Selected>

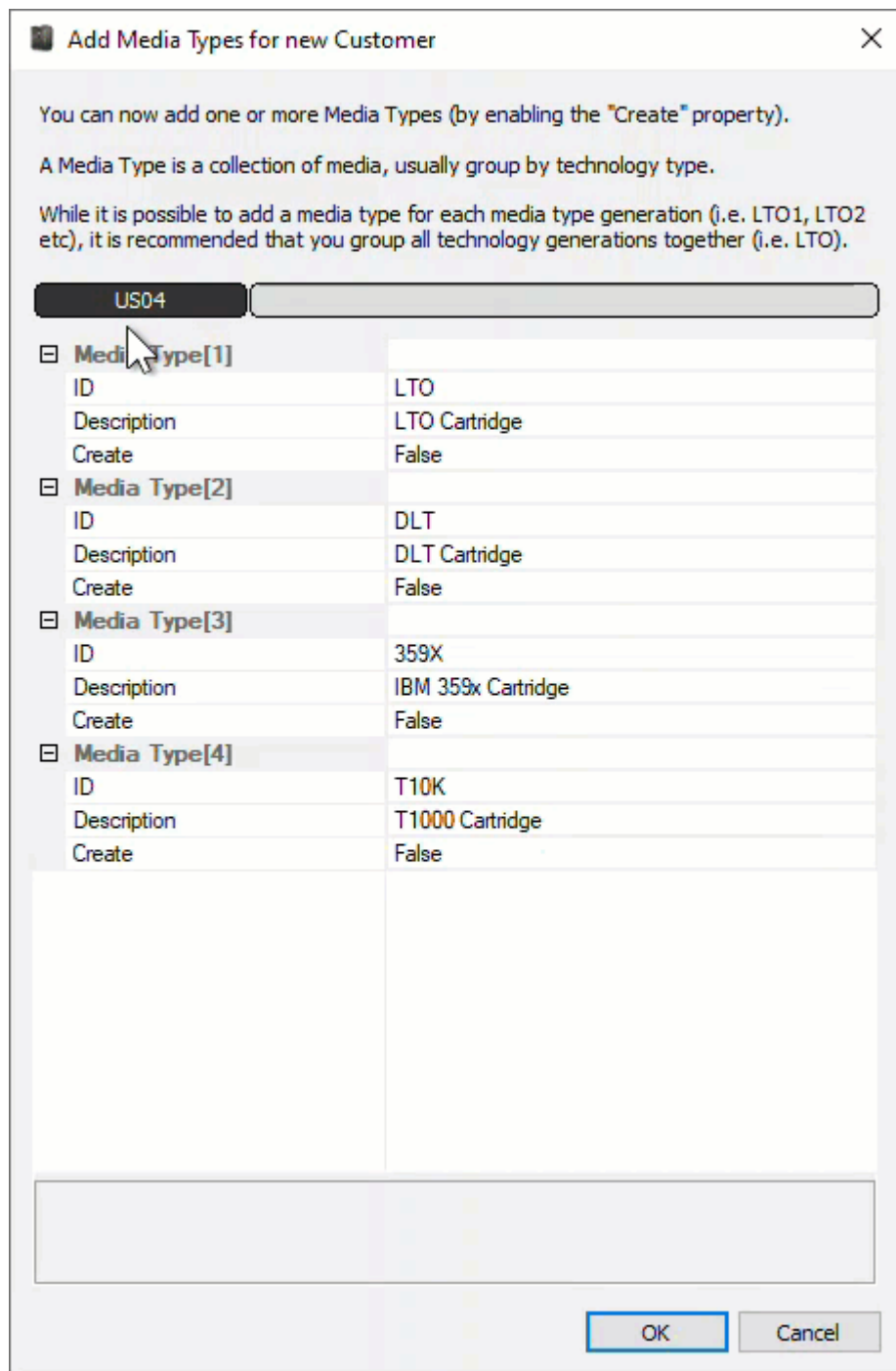
- **Hide Customer** when set to true removes the [Customer](#) from view in the [Customer Tree](#).
- **Disallow Customer Duplicates** stops the duplication of [Volume-ID's](#) across the [Customer Media Types](#).
- **Disallow Global Duplicates** stops the duplication of [Volume-ID's](#) across all [Customers](#).
- **Volume Lock** stops any [Volumes](#) moving within this [Customer](#).
- **Hide No Children** stops the display of this [Customer](#) unless showing children or has [Media](#) defined.
- **Allowable Media-ID Filter**, if set, restricts the allowable [Volume-ID](#) formats for this [Customer](#).
- **Maximum number of Media-ID's** that can be created for this [Customer-ID](#). 0=No limit.
- **Holiday Group** assigns a group for [Simple Management](#) calculations of holidays to avoid.
- **Customer Category** is an arbitrary number that can be set to group [Customers](#) for batch processing.
- **Parent Customer** displays the current [Customer](#) as a child under the selected [Customer](#).
- **Account Number** Iron Mountain (or other third-party) account number.
- **Long Barcode Attribute** adds un-hashed long Barcode to selected Attribute.

Once you click Save, TapeMaster will open a window asking if you'd like to add some **Media** to this **Customer**.



If yes is selected, then TapeMaster will display the Add **Media Types** for new Customer window. Create relevant **Media Type** by changing the Create option from False to True. Other fields, **Media-ID** and **Description** may be edited or customized to your required values.

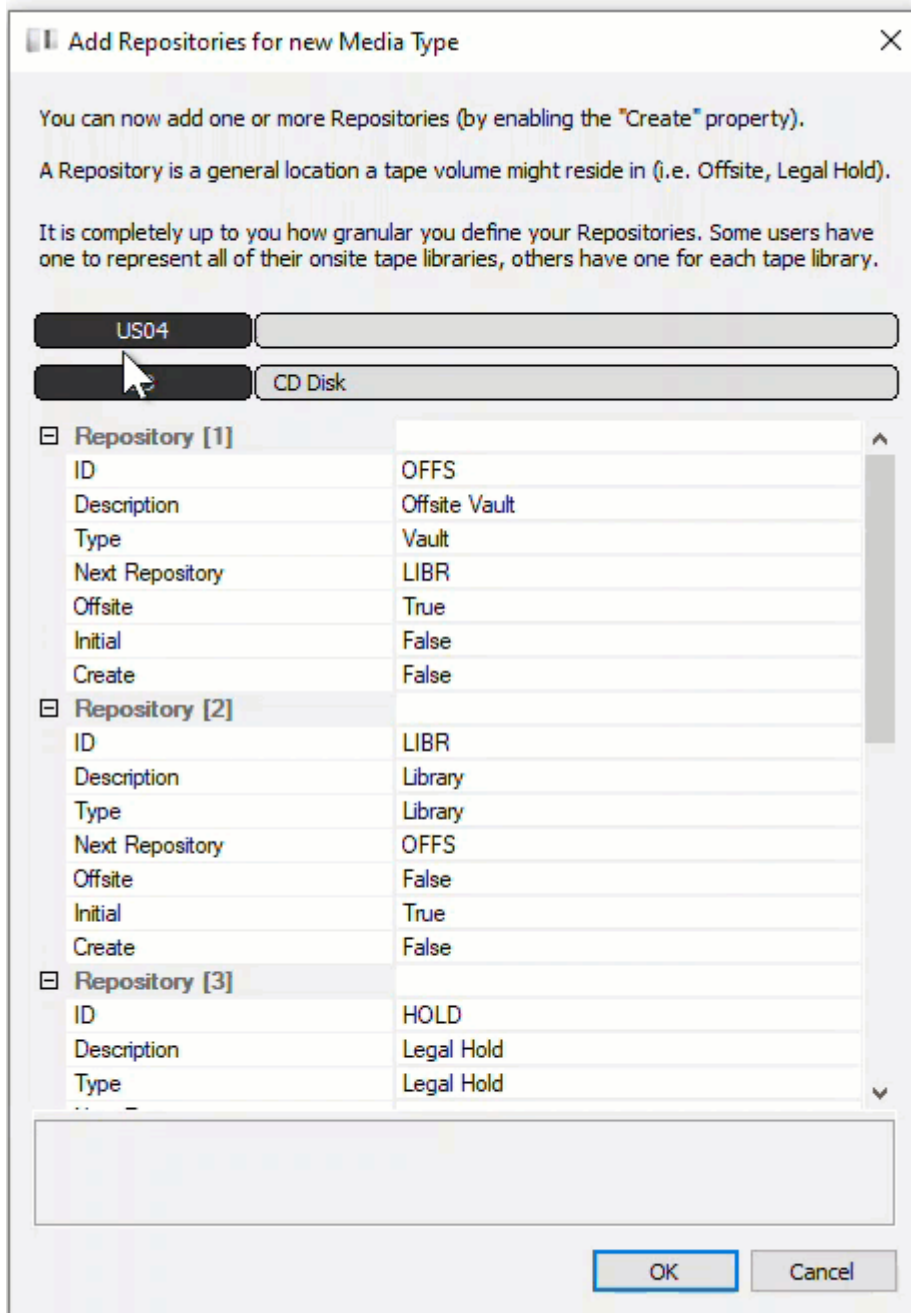
The Media Description may be edited at a later point but the Media-ID is permanent.



Click OK to continue.

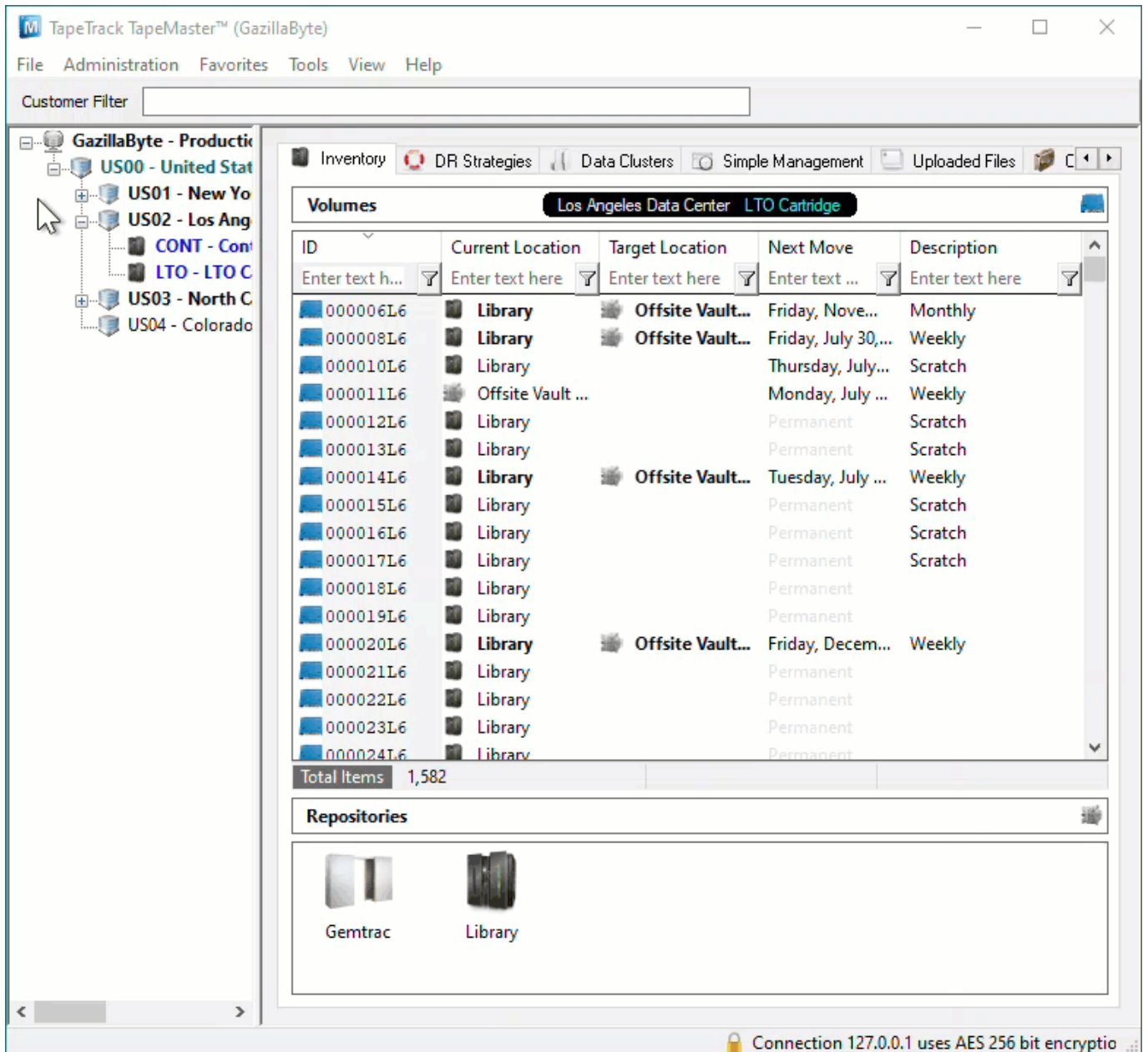
The next prompt will be to add any required **Repositories**. Create relevant **Repositories** by changing the Create option from False to True. Other fields, **Repository-ID** and **Description**, may be edited or

customized your required values.

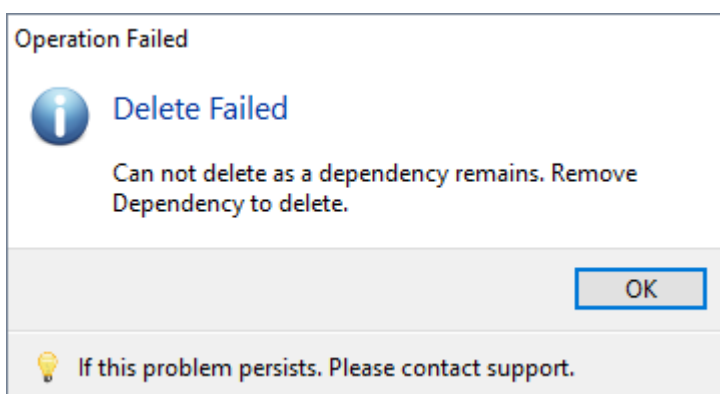


Delete Customer

To delete a [Customer](#), right-click on the [Customer](#) in the [Customer Tree](#) and select Delete Customer.



A **Customer** may only be deleted when it does not contain **Media Types**, **Repositories**, or **Volumes**.



If you receive this error, for this Customer, delete all **Volumes**, then all **Repositories** and all **Media types** before deleting **Customer**.

From:
<https://rtfm.tapetrack.com/> - **TapeTrack Documentation**

Permanent link:
<https://rtfm.tapetrack.com/master/customer?rev=1626663787>

Last update: **2025/01/21 22:07**

