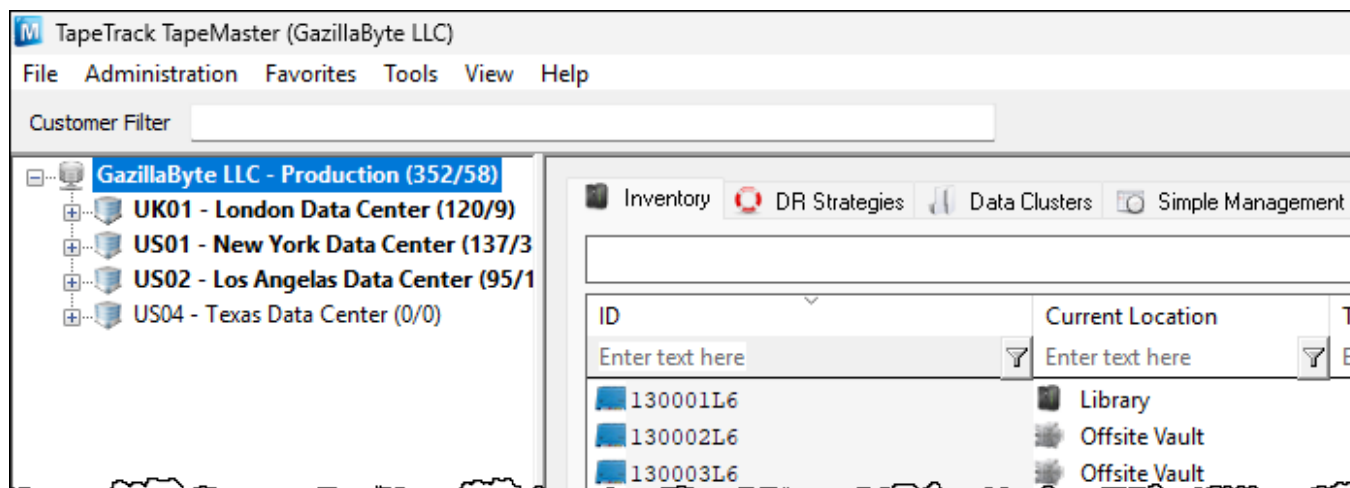


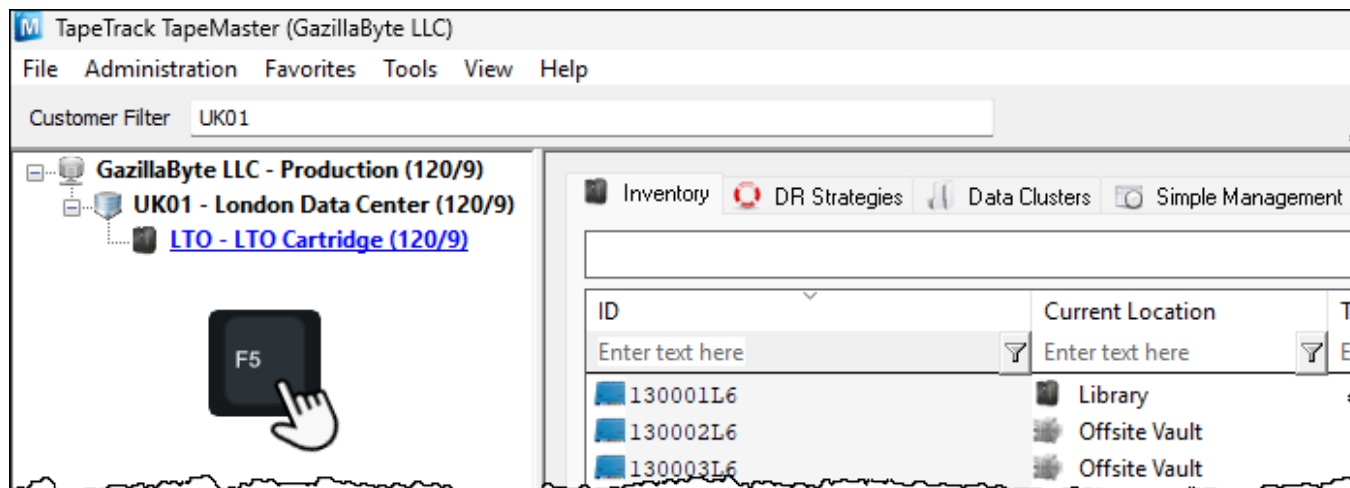
# Customer Filter

The Customer Filter allows you to filter the Customer Tree to selectively display only Customer-ID's that match the filter criteria.

## Customer Filter String

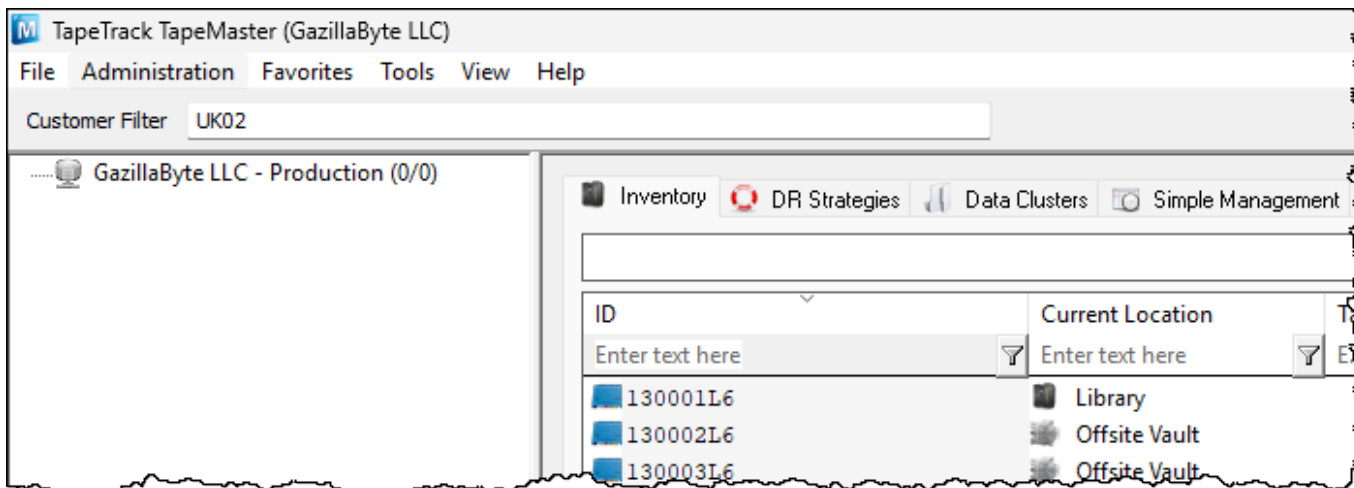


To filter Customer Tree insert a filter string in the Customer Filter field.

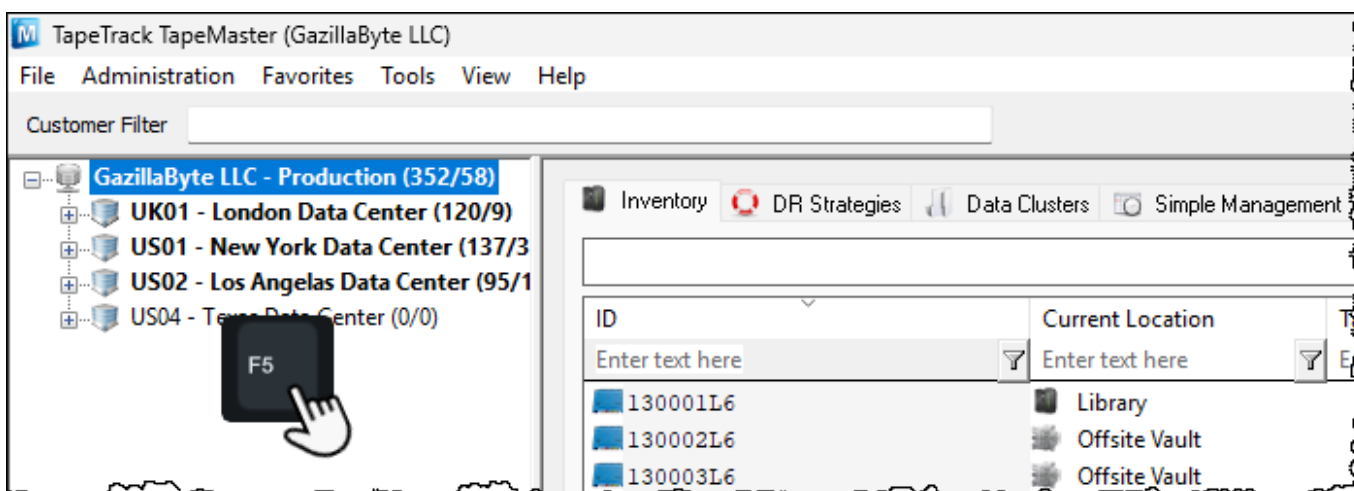


Click on the Customer Tree and press F5 on your keyboard to update display.

If no Customers are displayed this means that there are no Customer-ID's that match the filter string.



To return to a full [Customer Tree](#) display, delete the filter string in the Customer Filter field, click on the [Customer Tree](#) and press F5 on your keyboard.



Customers can also be searched by Customer Description rather than [Customer-ID](#) by using the [Find Customer](#) function.

## See Also

- [Find Customer](#)

[filter](#), [search](#)

From: <https://rtfm.tapetrack.com/> - **TapeTrack Documentation**

Permanent link: [https://rtfm.tapetrack.com/master/customer\\_filter](https://rtfm.tapetrack.com/master/customer_filter)

Last update: **2025/10/02 02:18**

