

# Customer Tree

The Customer Tree provides a summary of and navigation to all of the [Customers](#), [Media Types](#), and [Volumes](#) on the selected Server. These Objects appear in a hierarchy of:

1. Server Node
2. Customer Node
3. Media Node

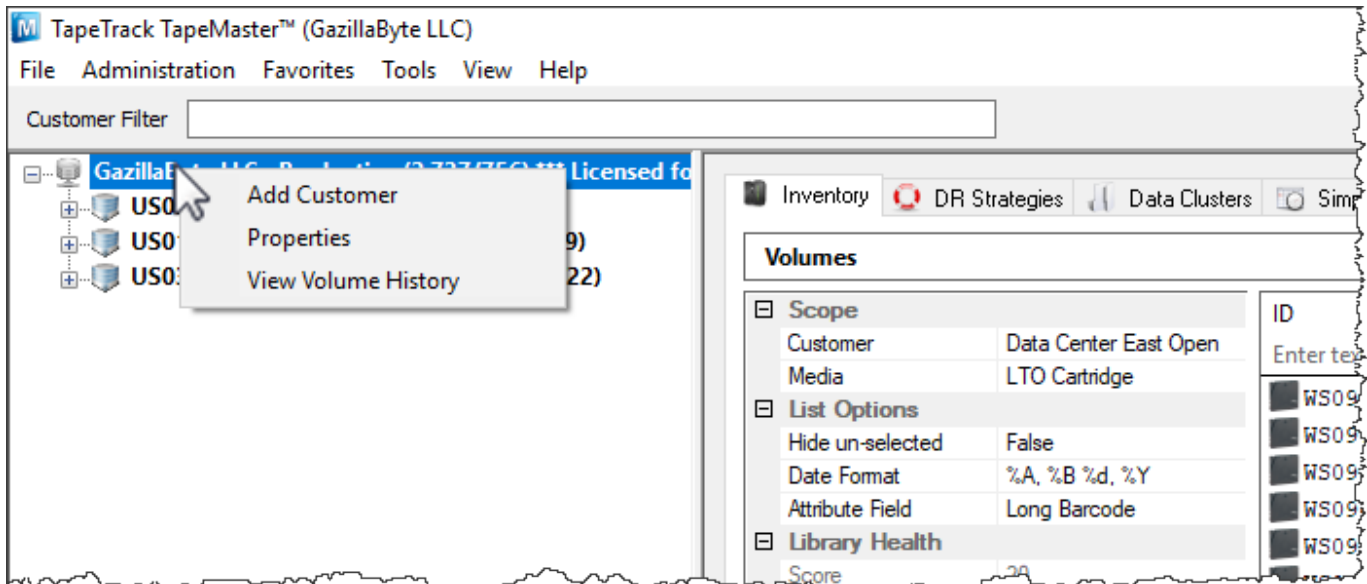


## Server Node

The Server Node displays the Server Owner and Server Name, along with two numbers, the first being the total number of tapes in the TapeTrack Database, and the second total being the number of tapes in a [Move Status](#).

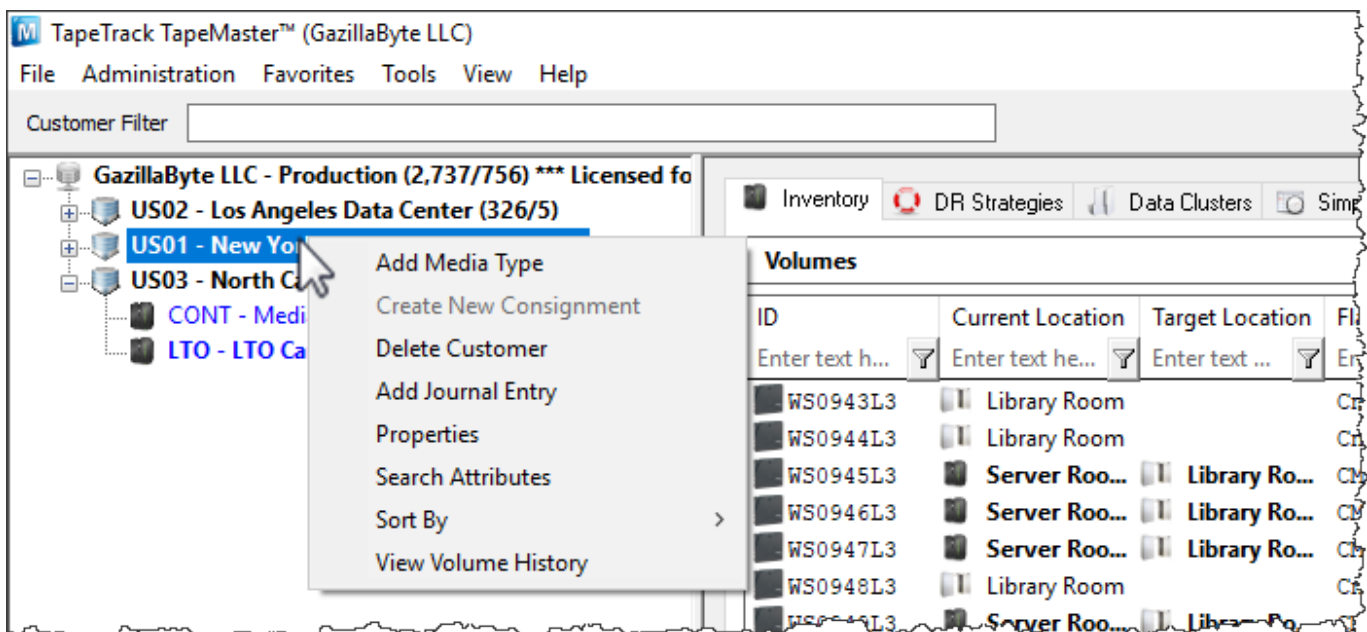
There are three options when right-clicking the Server Object:

- **Add Customer:** Initiates the process to [add a Customer](#).
- **Properties:** Launches the [Server Information Window](#).
- **View Volume History:** Displays all transactions for all [Volumes](#).



## Customer Node

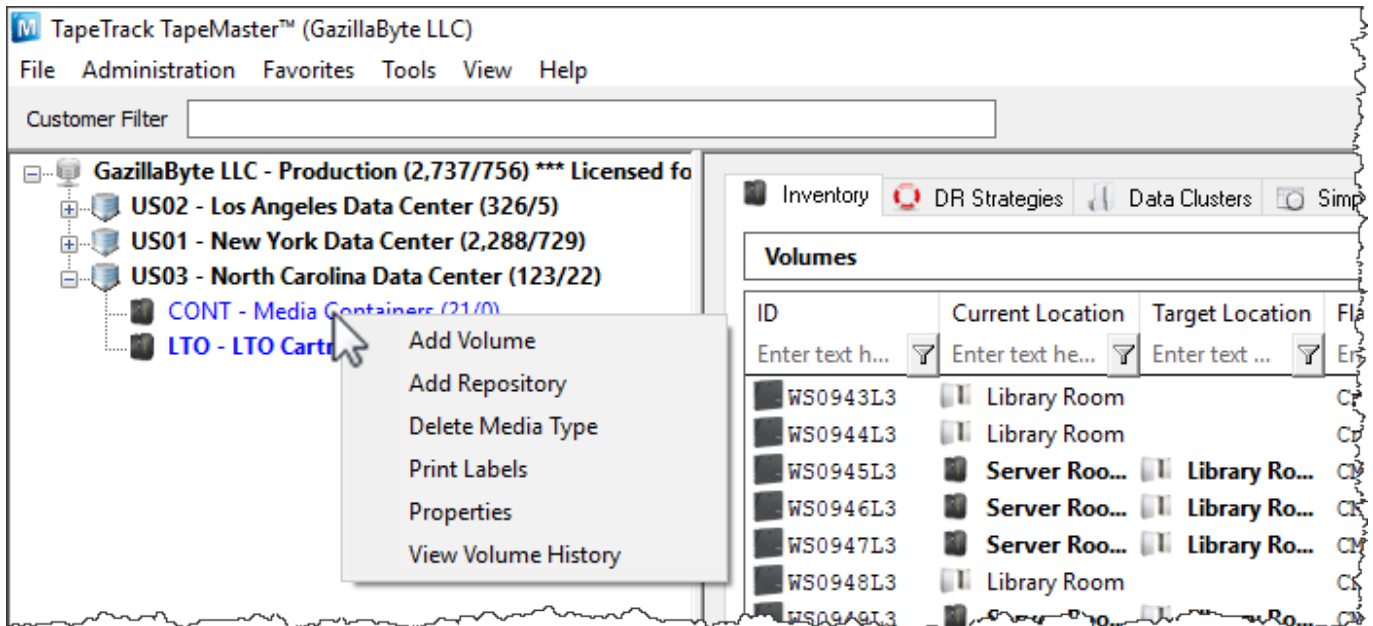
There are seven options when right-clicking the [Customer Node](#)



- **Add Media Type:** Initiates the process to add a [Media Type](#).
- **Delete Customer:** Deletes the selected [Customer](#). To complete this operation, a [Customer](#) must not have any dependent [Media Types](#), [Repositories](#), or [Volumes](#).
- **Add Journal Entry:** Launches a window to add a Journal Entry to a customer for use in [TapeTrack Checkpoint](#).
- **Properties:** Launches the Customer Properties Window.
- **Search Attributes:** Launches the Attributes Search window. For more information, see [Attributes](#).
- **Sort By:** The Sort By Menu has two options: Customer-ID and Customer Description. This will chose whether the Customer Tree is sorted by Customer-ID or Customer Description.
- **View Volume History:** Displays all transactions for all [Volumes](#) within this [Customer](#).

## Media Node

There are six options when right-clicking the Media Type Node:



- **Add Volume:** Will launch the [Volume Properties Window](#) to add a new [Volume](#).
- **Add Repository:** Goes through the process to add a [Repository](#).
- **Delete Media Type:** Deletes the selected [Media Type](#). To complete this operation, a [Media Type](#) must not have any dependent [Repositories](#) or [Volumes](#).
- **Print Labels:** Launches the Barcode Printing Application to print a Barcode for the [Customer](#) and [Media Type](#).
- **Properties:** Launches the Media Type Properties Window.
- **View Volume History:** Displays all transactions for all [Volumes](#) within this [Media Type](#).

From:  
<https://rtfm.tapetrack.com/> - **TapeTrack Documentation**

Permanent link:  
[https://rtfm.tapetrack.com/master/customer\\_tree?rev=1508349343](https://rtfm.tapetrack.com/master/customer_tree?rev=1508349343)

Last update: **2025/01/21 22:07**

