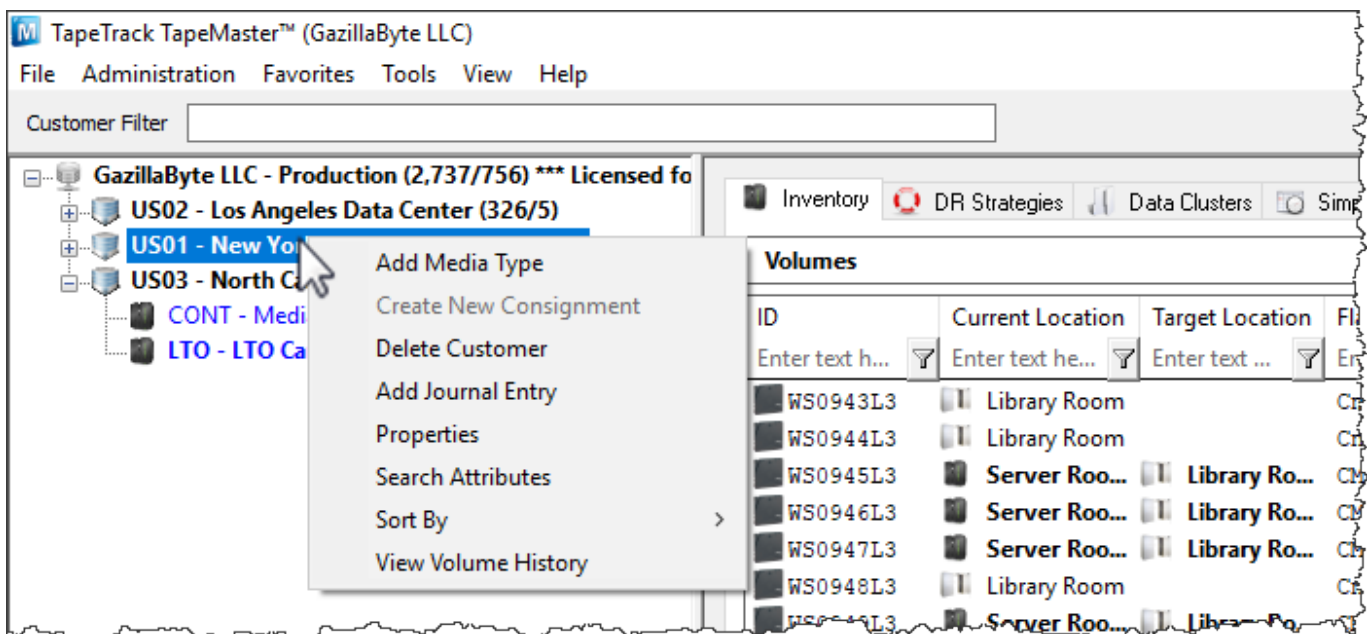


Customer Node

There are seven options when right-clicking the Customer Node.



- **Add Media Type:** Initiates the process to add a [Media Type](#).
- **Delete Customer:** Deletes the selected [Customer](#). To complete this operation, a [Customer](#) must not have any dependent [Media Types](#), [Repositories](#), or [Volumes](#).
- **Add Journal Entry:** Launches a window to add a Journal Entry to a customer for use in [TapeTrack Checkpoint](#).
- **Properties:** Launches the Customer Properties Window.
- **Search Attributes:** Launches the Attributes Search window. For more information, see [Attributes](#).
- **Sort By:** The Sort By Menu has two options: Customer-ID and Customer Description. This will choose whether the [Customer Tree](#) is sorted by Customer-ID or Customer Description.
- **View Volume History:** Displays all transactions for all [Volumes](#) within this [Customer](#).

Media Node

There are six options when right-clicking the Media Type Node:



- Add Volume: Will launch the [Volume Properties Window](#) to add a new [Volume](#).
- Add Repository: Goes through the process to add a [Repository](#).
- Delete Media Type: Deletes the selected [Media Type](#). To complete this operation, a [Media Type](#) must not have any dependent [Repositories](#) or [Volumes](#).
- Print Labels: Launches the Barcode Printing Application to print a Barcode for the [Customer](#) and [Media Type](#).
- Properties: Launches the Media Type Properties Window.
- View Volume History: Displays all transactions for all [Volumes](#) within this [Media Type](#).

From:
<https://rtfm.tapetrack.com/> - **TapeTrack Documentation**

Permanent link:
https://rtfm.tapetrack.com/master/customer_tree?rev=1737497272

Last update: **2025/01/21 22:07**

