

Customer Tree - Attribute View

In the default media type view, the information is displayed in the hierarchy of Owner, Customer and Media types. Attribute view differs in the information is displayed in the hierarchy Owner, Customer, featured attribute/s separated into matching or unique values, media type and Repository or location.

This allows you to quickly identify and display of an attribute category and value.

Prerequisites

The Customer must have a media type, at least one extended attribute and at least one extended attribute set to featured (true).

[Adding an extended attribute](#)

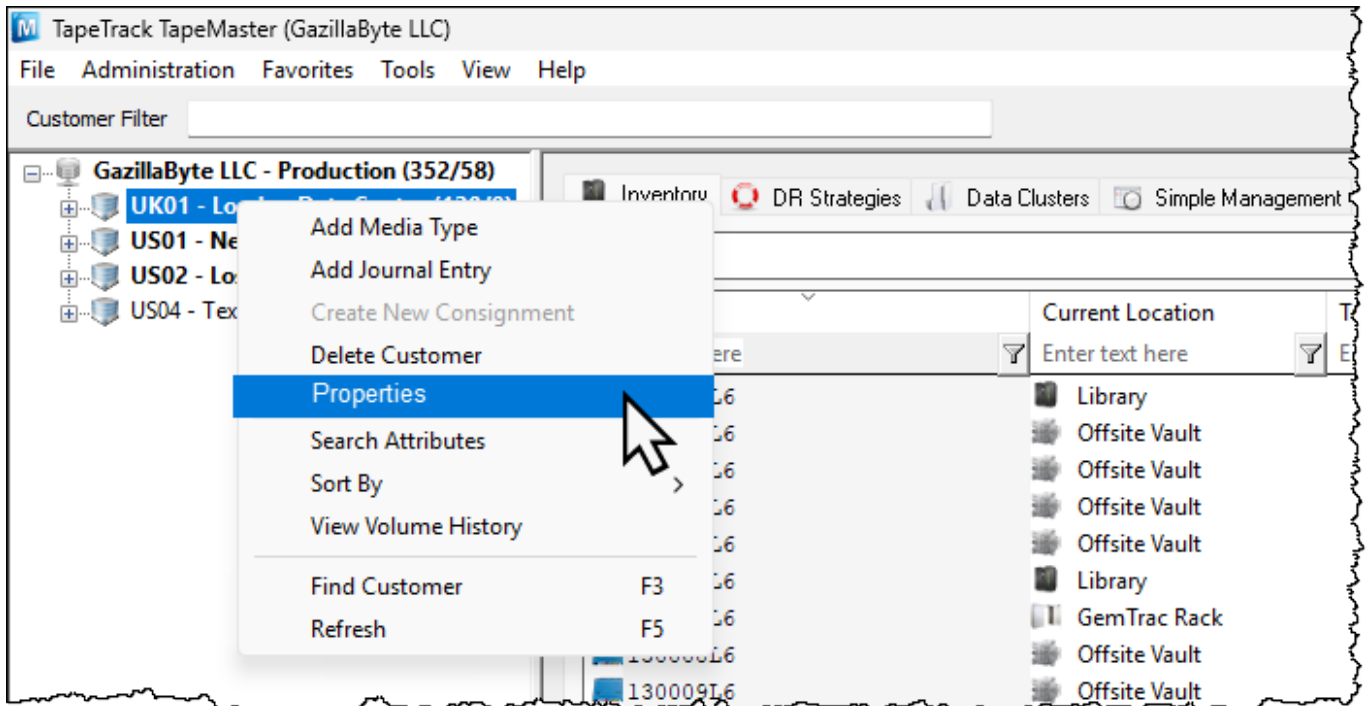
Extended Attributes	
Extended Attribute 1	
Label	Pool
Type	Dynamic List
Required	False
Hidden	False
Featured	True
Extended Attribute 2	
Extended Attribute 3	
Extended Attribute 4	
Extended Attribute 5	
Extended Attribute 6	
Extended Attribute 7	
Extended Attribute 8	
Extended Attribute 9	
Extended Attribute 10	
Extended Attribute 11	
Extended Attribute 12	

Reset All Values Copy from Customer

Save Cancel Help

Enabling Attribute View

Right click on the required Customer-ID, select Properties.



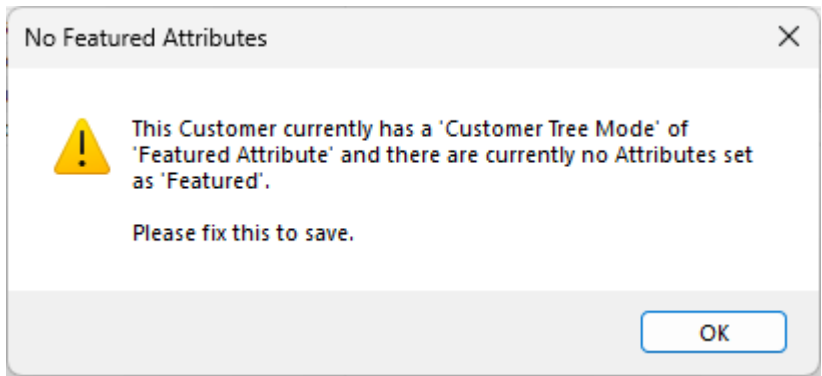
Select the Options tab and set Customer Tree Type to Featured Attribute. click Save to switch to Featured Attribute View.

Identity	Contact Details	Extended Attributes
User Access	Options	LibraryHealth
Hide Customer	False	
Disallow Customer Duplicates	False	
Disallow Global Duplicates	False	
Volume Lock	False	
Hide No Children	False	
Allowable Media-ID Filter		
Maximum number of Media-IDs	0	
Holiday Group		
Customer Category	0	
Parent Customer	<No Selection>	
Account Number	0	
Customer Tree Type	Media Type(default)	
Long Barcode Attribute	Featured Attribute	
	Media Type(default)	

Customer Tree Type
How the Customer Tree should be displayed when clicking on the Customer node

Save Cancel Help

If you haven't set at least one extended attributed as featured, you will encounter the error No Featured Attributes. Select the Extended Attributes tab and set the required attribute/s to featured equal to true.



[master, customer, attribute](#)

From:
<https://rtfm.tapetrack.com/> - **TapeTrack Documentation**

Permanent link:
https://rtfm.tapetrack.com/master/customer_tree_attribute_view?rev=1760313251

Last update: **2025/10/12 23:54**

