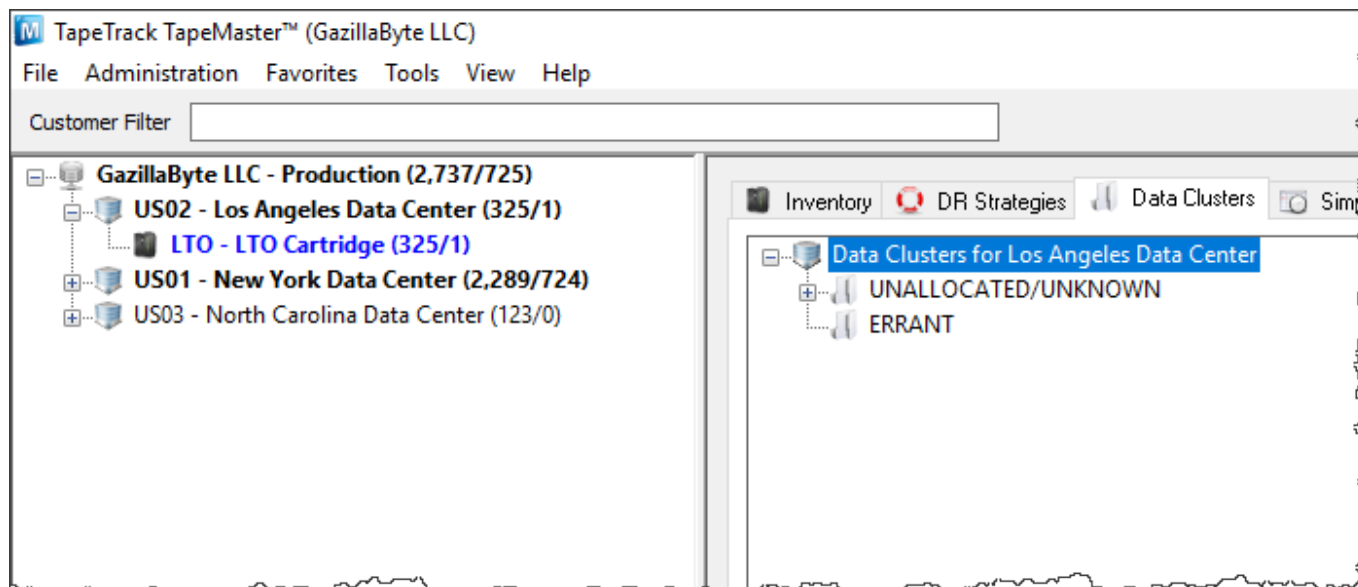


# Data Clusters

A Data Cluster is an arbitrary grouping of Volumes that does not depend on sequential or similar Volume-IDs.

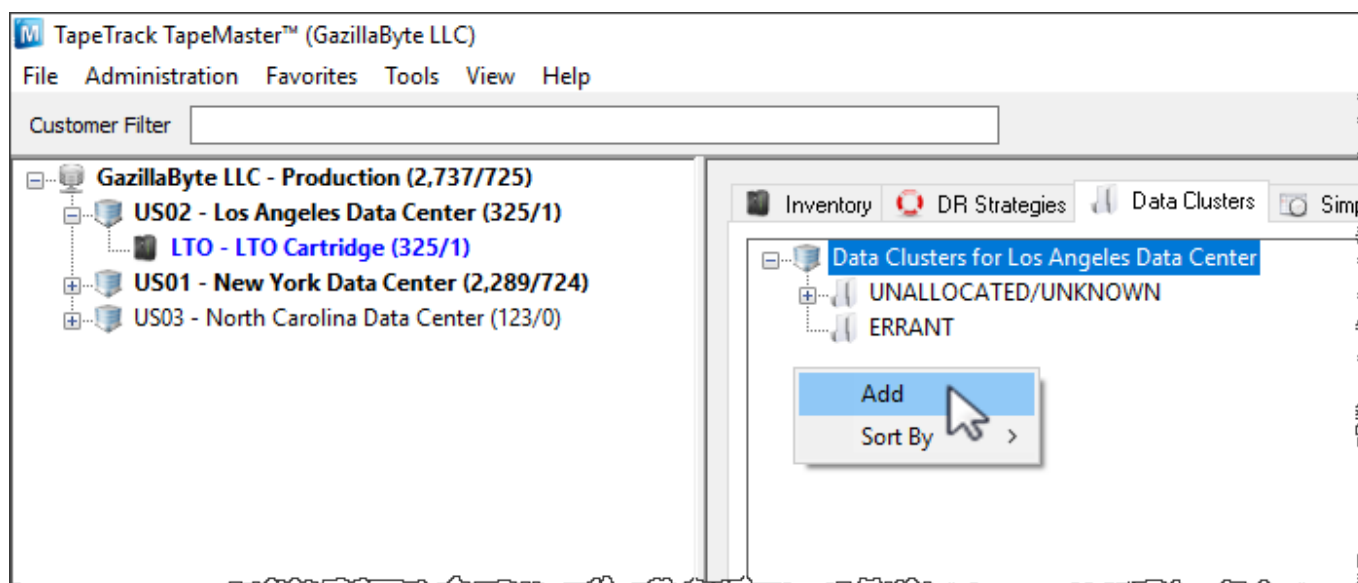
They can be used in combination with Simple Management Rules to coordinate Volume movements

## Adding A Data Cluster



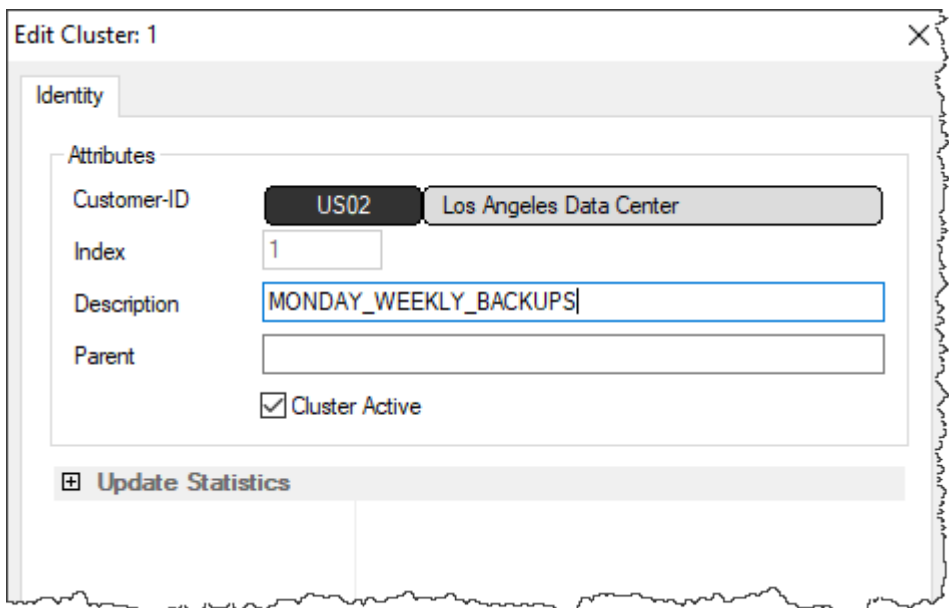
To add a Data Cluster: In TapeMaster, open the Media type of the required [Customer](#) and select the Data Clusters Administrative Tab.

Right-click inside the Data Clusters Administrative Tab and select Add or use the Insert key on the keyboard.



Fill out a brief description of this Data Cluster and, if necessary, insert a Parent Data Cluster for this

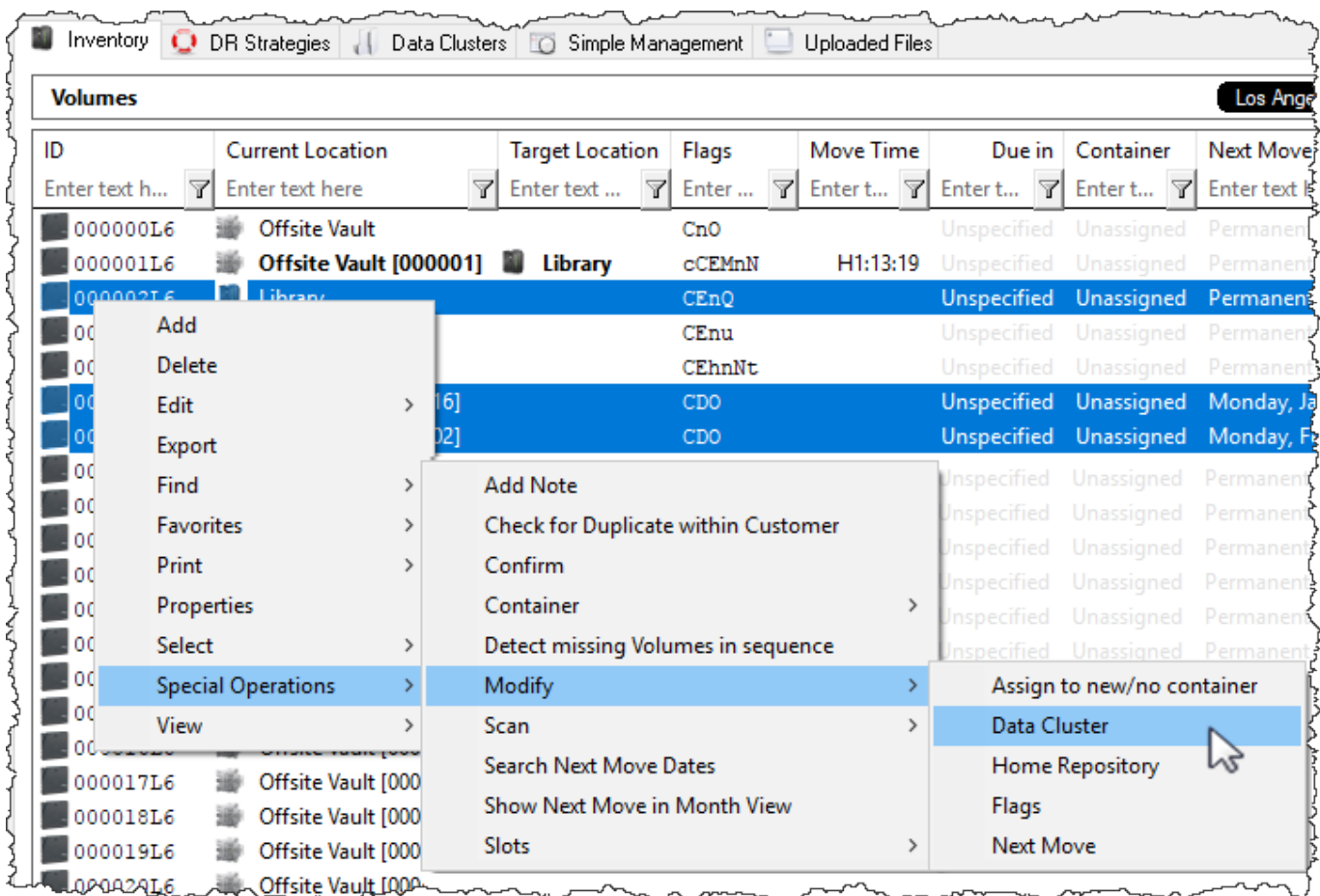
Data Cluster to be nested under.



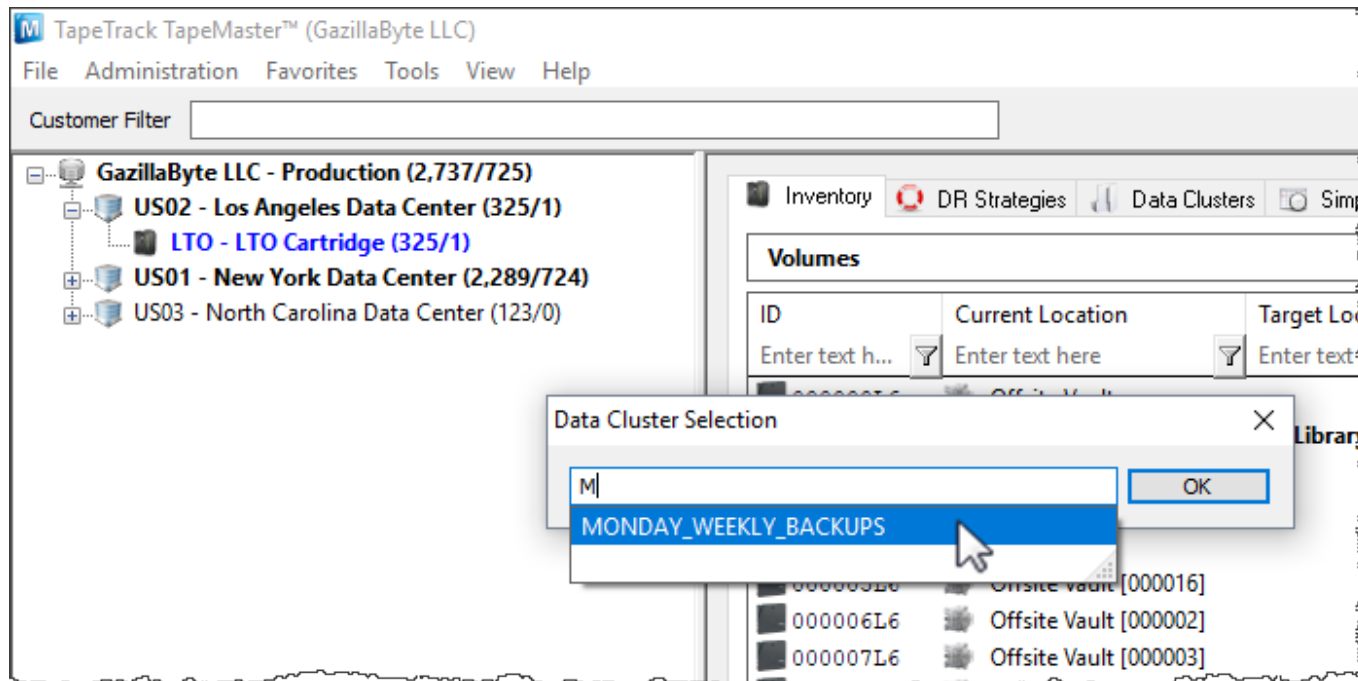
## Add Volumes to the Data Cluster.

### Adding Multiple Volumes

From the Inventory tab of the required Customers media type: Select the Volumes in the Volume List. Right-click, select Special Operations → Modify → Data Cluster.



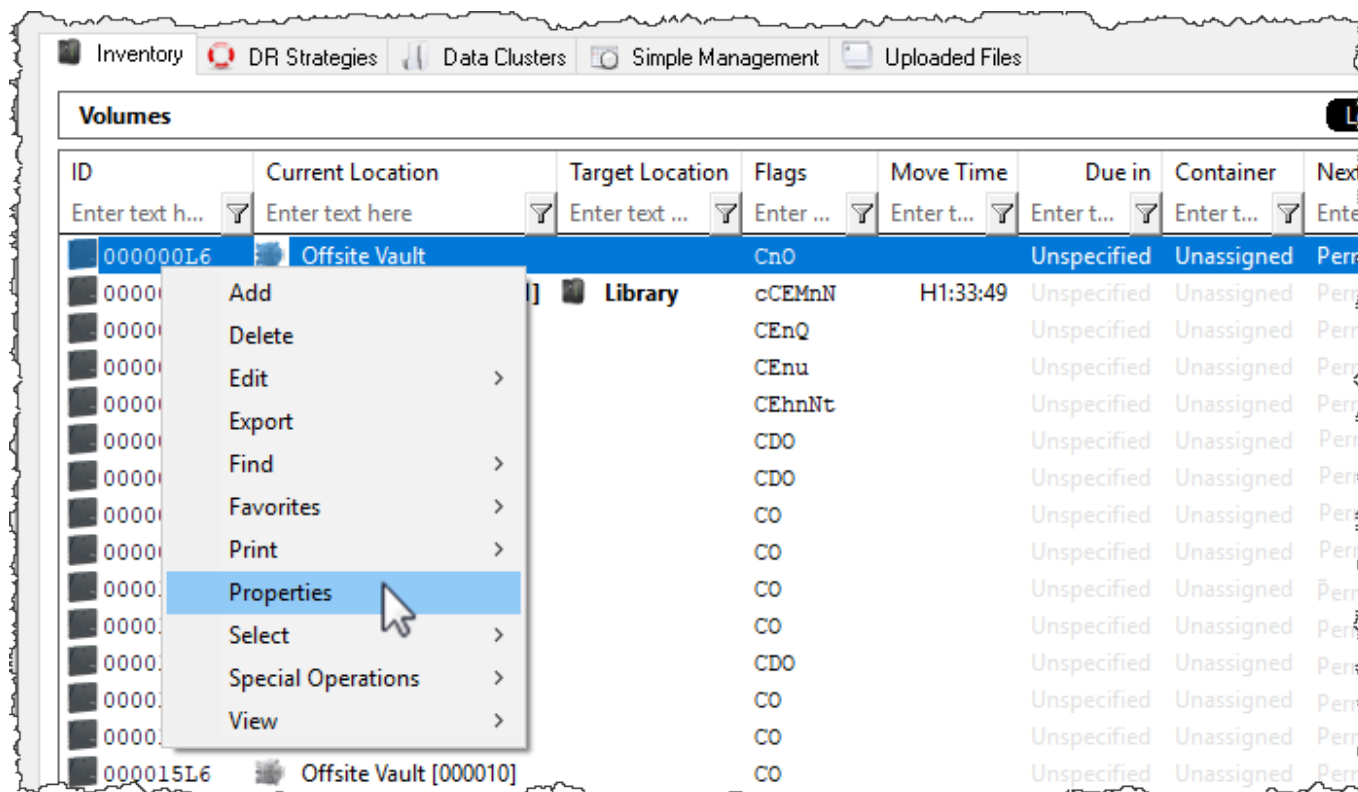
In the Data Cluster Selection window type in the Data Cluster that these [Volumes](#) should be associated with, and select from the clusters in the displayed list.



Click OK to save.

### Adding Single Volume

Double-click or Right-click and select Properties on a [Volume](#) in the [Volume List](#) to launch the [Volume Properties Window](#).



Select the Options tab. At the top will be a field called **Data Cluster** with a drop-down menu. Select the Data Cluster to associate this **Volume** with and click Save.



From:  
<https://rtfm.tapetrack.com/> - **TapeTrack Documentation**

Permanent link:  
[https://rtfm.tapetrack.com/master/data\\_cluster](https://rtfm.tapetrack.com/master/data_cluster)

Last update: **2025/01/21 22:07**

