

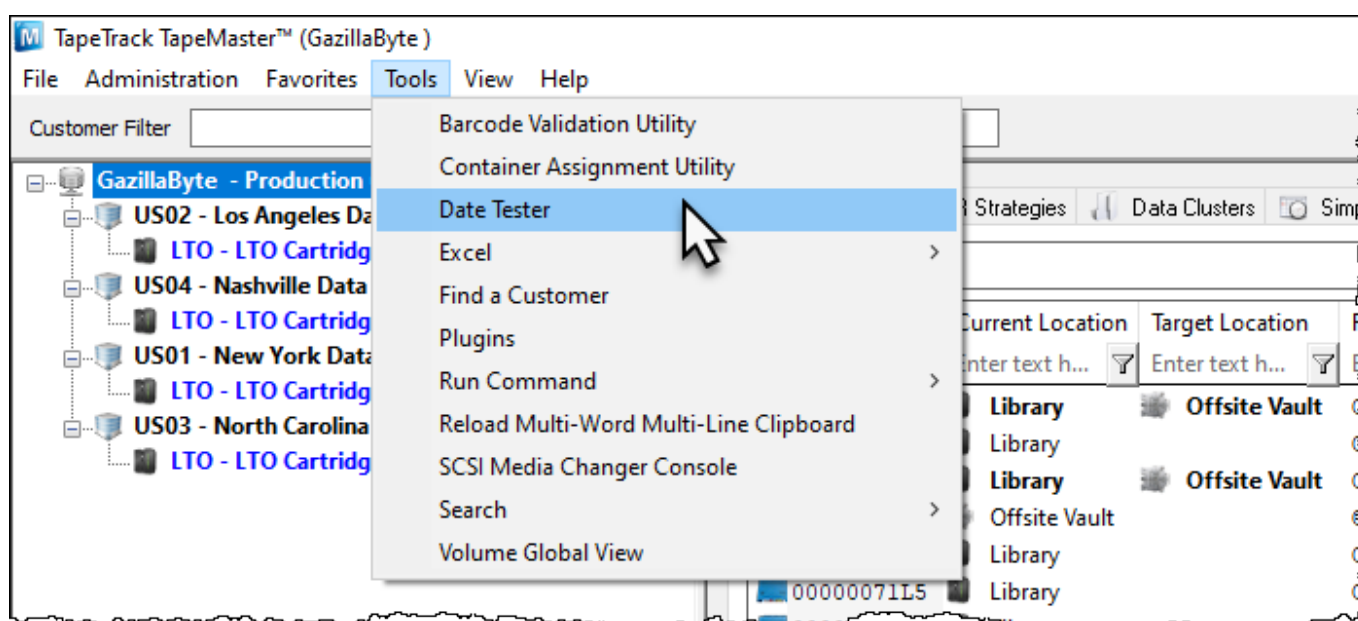
Date Tester

Date Format Tester allows you to enter a date, or range of dates to display the predicted range in a calendar format.

This gives you the ability to check the intended results are contained within the specified dates before any reports are created.

Open Date Format Tester

From the main menu in TapeMaster, select Tools > Date Tester



Date Range

Dates can be entered in several formats, using a single year or a range of dates to span between.

Dates can also be entered as literal dates, such as 2019, or using date calculation variables such as Y-1 which will give you a corresponding date of last year.

Date Calculation Variables

Variable Syntax

Syntax	Description
YYYY-MM-DD	ISO Date Format
*	Today
W	Start of the Week

Syntax	Description
P	The oldest date
F	The most future date
M	The first day of the month
m	The last day of the month.
Y	The first day of the year.
y	The last day of the year.

Variable Syntax Examples

Syntax	Description
Y-1:y-1	January 1st to December 31st last year
M-1:m-1	1st of last month to the last day of last month
W-2:*	2 weeks ago until today

Date Examples

January 1st to December 31st 2019. 2019

TapeTrack Date Format Tester

Date Range Value:

Difference: D365:00:00:00

Sun	Mon	Tue	Wed	Thu	Fri	Sat
30	31	1	2	3	4	5
6	7	8	9	10	11	12
13	14	15	16	17	18	19
20	21	22	23	24	25	26
27	28	29	30	31	1	2
3	4	5	6	7	8	9

Sun	Mon	Tue	Wed	Thu	Fri	Sat
24	25	26	27	28	29	30
1	2	3	4	5	6	7
8	9	10	11	12	13	14
15	16	17	18	19	20	21
22	23	24	25	26	27	28
29	30	31	1	2	3	4

January 1st 2018 to December 31st 2019. 2018:2019

TapeTrack Date Format Tester

Date Range Value:

Difference: D730:00:00:00

Sun	Mon	Tue	Wed	Thu	Fri	Sat
31	1	2	3	4	5	6
7	8	9	10	11	12	13
14	15	16	17	18	19	20
21	22	23	24	25	26	27
28	29	30	31	1	2	3
4	5	6	7	8	9	10

Sun	Mon	Tue	Wed	Thu	Fri	Sat
24	25	26	27	28	29	30
1	2	3	4	5	6	7
8	9	10	11	12	13	14
15	16	17	18	19	20	21
22	23	24	25	26	27	28
29	30	31	1	2	3	4

July 1st 2018 to June 30th 2020 2018-07-01:2019-06-30

TapeTrack Date Format Tester

Date Range Value:

Difference: D549:00:00:00

Sun	Mon	Tue	Wed	Thu	Fri	Sat
24	25	26	27	28	29	30
1	2	3	4	5	6	7
8	9	10	11	12	13	14
15	16	17	18	19	20	21
22	23	24	25	26	27	28
29	30	31	1	2	3	4

Sun	Mon	Tue	Wed	Thu	Fri	Sat
24	25	26	27	28	29	30
1	2	3	4	5	6	7
8	9	10	11	12	13	14
15	16	17	18	19	20	21
22	23	24	25	26	27	28
29	30	31	1	2	3	4

January 1st 2020 to end of current month 2020:m+

TapeTrack Date Format Tester

Date Range Value:

Difference: D182:00:00:00

Sun	Mon	Tue	Wed	Thu	Fri	Sat
29	30	31	1	2	3	4
5	6	7	8	9	10	11
12	13	14	15	16	17	18
19	20	21	22	23	24	25
26	27	28	29	30	31	1
2	3	4	5	6	7	8

Sun	Mon	Tue	Wed	Thu	Fri	Sat
31	1	2	3	4	5	6
7	8	9	10	11	12	13
14	15	16	17	18	19	20
21	22	23	24	25	26	27
28	29	30	1	2	3	4
5	6	7	8	9	10	11

January 1st 2020 to end of last month 2020:m-1

TapeTrack Date Format Tester

Date Range Value:

Difference: D152:00:00:00

Sun	Mon	Tue	Wed	Thu	Fri	Sat
29	30	31	1	2	3	4
5	6	7	8	9	10	11
12	13	14	15	16	17	18
19	20	21	22	23	24	25
26	27	28	29	30	31	1
2	3	4	5	6	7	8

Sun	Mon	Tue	Wed	Thu	Fri	Sat
26	27	28	29	30	1	2
3	4	5	6	7	8	9
10	11	12	13	14	15	16
17	18	19	20	21	22	23
24	25	26	27	28	29	30
31	1	2	3	4	5	6

From:
<https://rtfm.tapetrack.com/> - **TapeTrack Documentation**

Permanent link:
https://rtfm.tapetrack.com/master/date_tester

Last update: **2025/01/21 22:07**

