

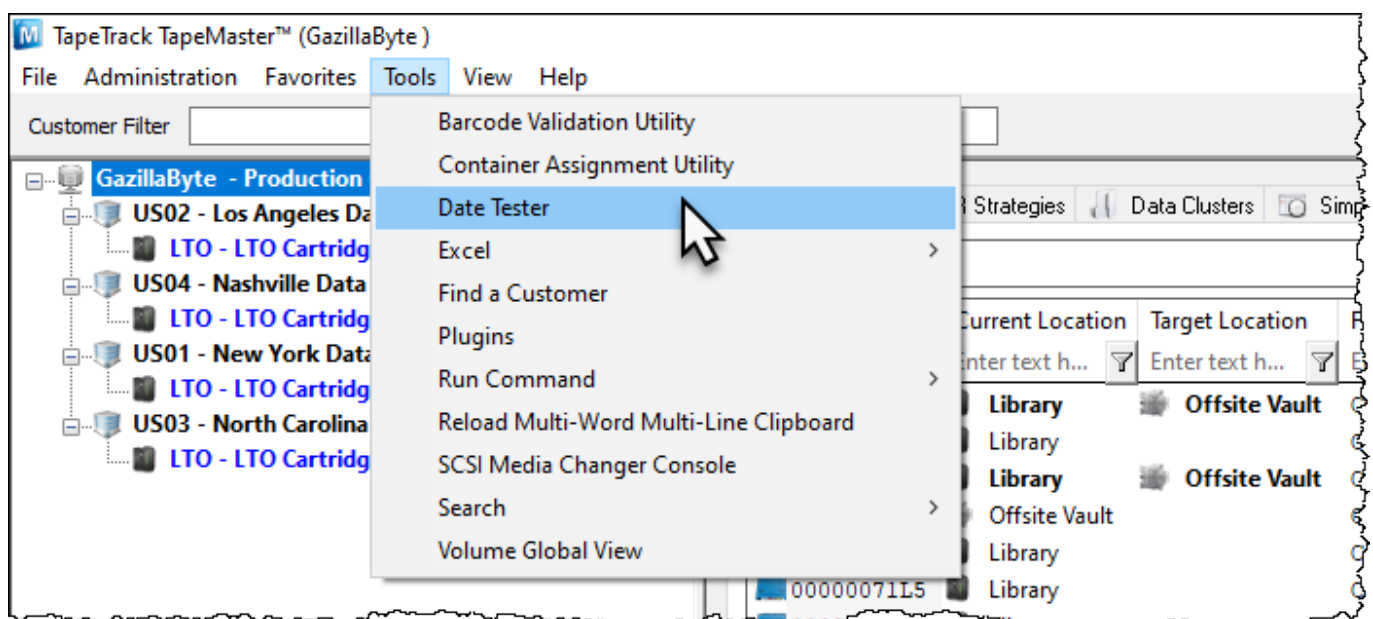
# Date Tester

Date Format Tester allows you to enter a date, or range of dates to display the predicted range in a calendar format.

This gives you the ability to check the intended results are contained within the specified dates before any reports are created.

## Open Date Format Tester

From the main menu in TapeMaster, select Tools > Date Tester



## Date Range

Dates can be entered in several formats, using a single year or a range of dates to span between.

Dates can also be entered as literal dates, such as 2019, or using date calculation variables such as Y-1 which will give you a corresponding date of last year.

## Date Calculation Variables

### Variable Syntax

Syntax	Description
YYYY-MM-DD	ISO Date Format
*	Today
W	Start of the Week

Syntax	Description
P	The oldest date
F	The most future date
M	The first day of the month
m	The last day of the month.
Y	The first day of the year.
y	The last day of the year.

### Variable Syntax Examples

Syntax	Description
Y-1:y-1	January 1st to December 31st last year
M-1:m-1	1st of last month to the last day of last month
W-2:*	2 weeks ago until today

### Date Examples

January 1st to December 31st 2019. 2019

**TapeTrack Date Format Tester** ✕

Date Range Value:

Difference: D365:00:00:00

January 2019

Sun	Mon	Tue	Wed	Thu	Fri	Sat
30	31	1	2	3	4	5
6	7	8	9	10	11	12
13	14	15	16	17	18	19
20	21	22	23	24	25	26
27	28	29	30	31	1	2
3	4	5	6	7	8	9

December 2019

Sun	Mon	Tue	Wed	Thu	Fri	Sat
24	25	26	27	28	29	30
1	2	3	4	5	6	7
8	9	10	11	12	13	14
15	16	17	18	19	20	21
22	23	24	25	26	27	28
29	30	31	1	2	3	4

January 1st 2018 to December 31st 2019. 2018:2019

**TapeTrack Date Format Tester** ✕

Date Range Value:

Difference: D730:00:00:00

January 2018

Sun	Mon	Tue	Wed	Thu	Fri	Sat
31	1	2	3	4	5	6
7	8	9	10	11	12	13
14	15	16	17	18	19	20
21	22	23	24	25	26	27
28	29	30	31	1	2	3
4	5	6	7	8	9	10

December 2019

Sun	Mon	Tue	Wed	Thu	Fri	Sat
24	25	26	27	28	29	30
1	2	3	4	5	6	7
8	9	10	11	12	13	14
15	16	17	18	19	20	21
22	23	24	25	26	27	28
29	30	31	1	2	3	4

July 1st 2018 to June 30th 2020 2018-07-01:2019-06-30

TapeTrack Date Format Tester

Date Range Value: 2018-07-01:2019-12-31  
Difference: D549:00:00:00

Sun	Mon	Tue	Wed	Thu	Fri	Sat
24	25	26	27	28	29	30
1	2	3	4	5	6	7
8	9	10	11	12	13	14
15	16	17	18	19	20	21
22	23	24	25	26	27	28
29	30	31	1	2	3	4

Sun	Mon	Tue	Wed	Thu	Fri	Sat
24	25	26	27	28	29	30
1	2	3	4	5	6	7
8	9	10	11	12	13	14
15	16	17	18	19	20	21
22	23	24	25	26	27	28
29	30	31	1	2	3	4

January 1st 2020 to end of current month 2020:m+

TapeTrack Date Format Tester

Date Range Value: 2020:m+  
Difference: D182:00:00:00

Sun	Mon	Tue	Wed	Thu	Fri	Sat
29	30	31	1	2	3	4
5	6	7	8	9	10	11
12	13	14	15	16	17	18
19	20	21	22	23	24	25
26	27	28	29	30	31	1
2	3	4	5	6	7	8

Sun	Mon	Tue	Wed	Thu	Fri	Sat
31	1	2	3	4	5	6
7	8	9	10	11	12	13
14	15	16	17	18	19	20
21	22	23	24	25	26	27
28	29	30	1	2	3	4
5	6	7	8	9	10	11

January 1st 2020 to end of last month 2020:m-1

TapeTrack Date Format Tester

Date Range Value: 2020:m-1  
Difference: D152:00:00:00

Sun	Mon	Tue	Wed	Thu	Fri	Sat
29	30	31	1	2	3	4
5	6	7	8	9	10	11
12	13	14	15	16	17	18
19	20	21	22	23	24	25
26	27	28	29	30	31	1
2	3	4	5	6	7	8

Sun	Mon	Tue	Wed	Thu	Fri	Sat
26	27	28	29	30	1	2
3	4	5	6	7	8	9
10	11	12	13	14	15	16
17	18	19	20	21	22	23
24	25	26	27	28	29	30
31	1	2	3	4	5	6

From:  
<https://rtfm.tapetrack.com/> - **TapeTrack Documentation**

Permanent link:  
[https://rtfm.tapetrack.com/master/date\\_tester?rev=1592354552](https://rtfm.tapetrack.com/master/date_tester?rev=1592354552)

Last update: **2025/01/21 22:07**

