

Permanent License

A permanent license key will allow you to operate the TapeTrack software until the expiry date associated with your license occurs.

Permanent license/s to TapeTrack are restricted to those who have a written End User License Agreement (EULA) with GazillaByte.

The process of upgrading to or extending a full license involves:

- Altering the license values using TapeMaster (If upgrading from a new installation)
- Exporting the updated license file to GazillaByte to have a new license key cut
- Installing the new license config file (when received) containing your new license key.



It might take a few hours to get a new permanent license. If you need a license quickly, please follow the [Temporary License Instructions](#).

Obtaining Or Extending A Permanent License



If you are upgrading from a free license directly to a permanent license follow the instructions in the [trial license](#) section, making sure you enter the correct expiry date and not a 90 day expiry date.

If extending the expiry date on an already permanent license or upgrading from a 90 day license:

Open TapeTrack TapeMaster and login with the user name **tapemaster** (case sensitive) and leave password blank (or use your current tapemaster password if it has been changed) or current user with tapemaster rights.

From the menu click Help → Framework Server Licensing.

The screenshot shows the TapeTrack TapeMaster™ (GazillaByte) application window. The interface includes a menu bar (File, Administration, Favorites, Tools, View, Help) and a Customer Filter. On the left, a tree view shows the hierarchy: GazillaByte - Production > US00 - United State > US01 - New York > US02 - Los Angel > CONT - Conta > LTO - LTO Car > US03 - North Car. The main area displays a table of Volumes for the Los Angeles Data Center LTO Cartridge. The table has columns for ID, Current Location, Target Location, Next Move, and Description. Below the table, it shows 'Total Items 1,587' and a 'Repositories' section with icons for Gemtrac, Library, Transport, and Offsite Vault. A status bar at the bottom indicates 'Connection 127.0.0.1 uses AES 256 bit encryption'.

ID	Current Location	Target Location	Next Move	Description
000000L6	Library		Permanent	
000001L6	Library	Gemtrac	Thursday, Nov...	Weekly
000002L6	Library	Offsite Vault ...	Friday, Novem...	Monthly
000003L6	Library	Offsite Vault ...	Friday, Novem...	Monthly
000004L6	Library	Offsite Vault ...	Friday, Novem...	Monthly
000005L6	Library	Offsite Vault ...	Friday, Novem...	Monthly
000006L6	Library	Offsite Vault ...	Friday, Novem...	Monthly
000007L6	Library		Permanent	Scratch
000008L6	Library	Offsite Vault ...	Friday, July 30, ...	Weekly
000009L6	Library	Offsite Vault ...	Friday, July 30, ...	Weekly
000010L6	Library		Thursday, July ...	Scratch
000011L6	Library	Offsite Vault ...	Monday, July 2...	Weekly
000012L6	Library		Permanent	Scratch
000013L6	Library		Permanent	Scratch
000014L6	Library	Offsite Vault ...	Tuesday, July 2...	Weekly
000015L6	Library		Permanent	Scratch

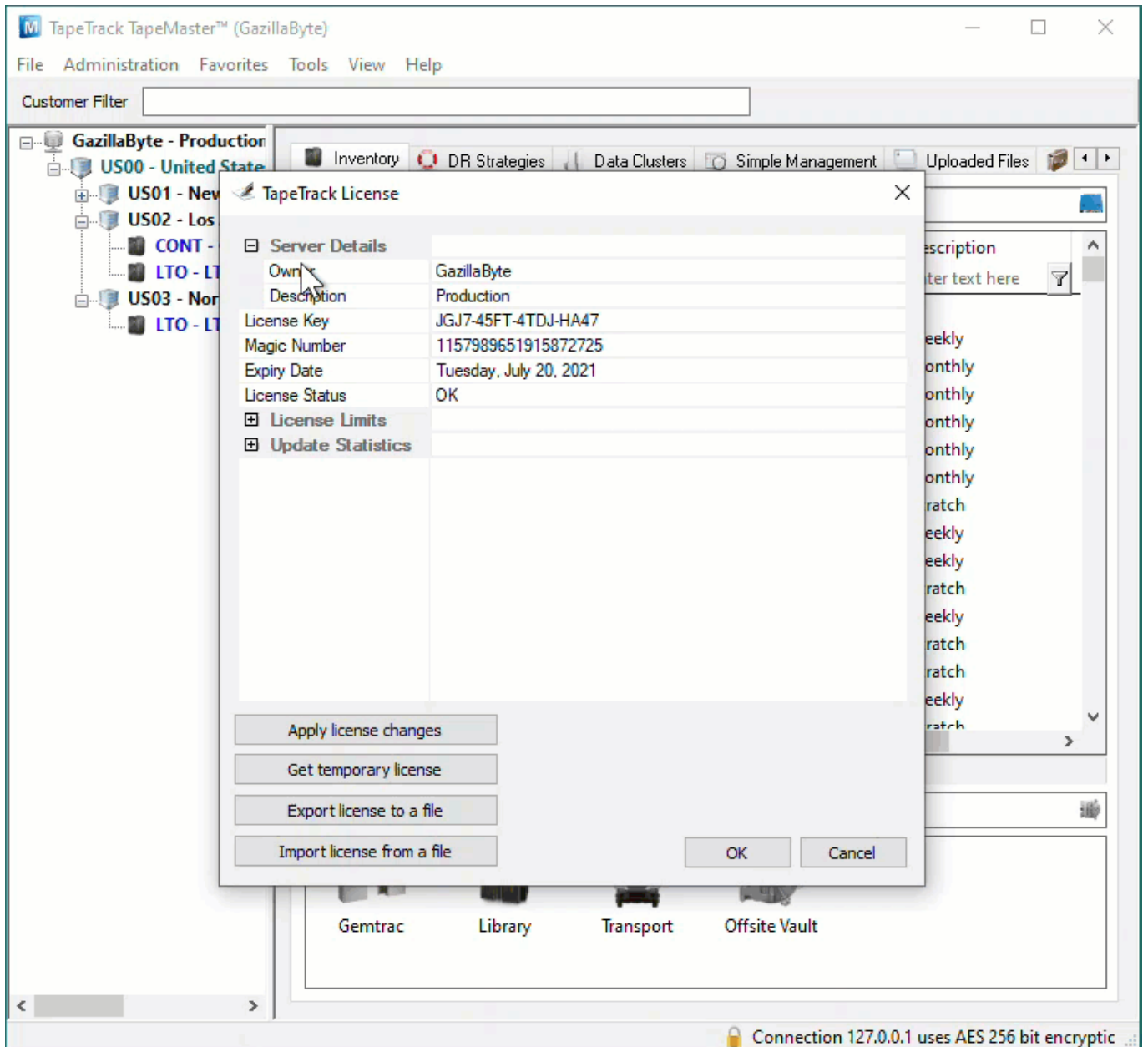
 If the menu option **Framework Server Licensing** is grayed out and inaccessible, you do not have sufficient privileges (tapemaster rights) to alter the software license

Export Current License Details

To preserve current license values, click Export license to a file.

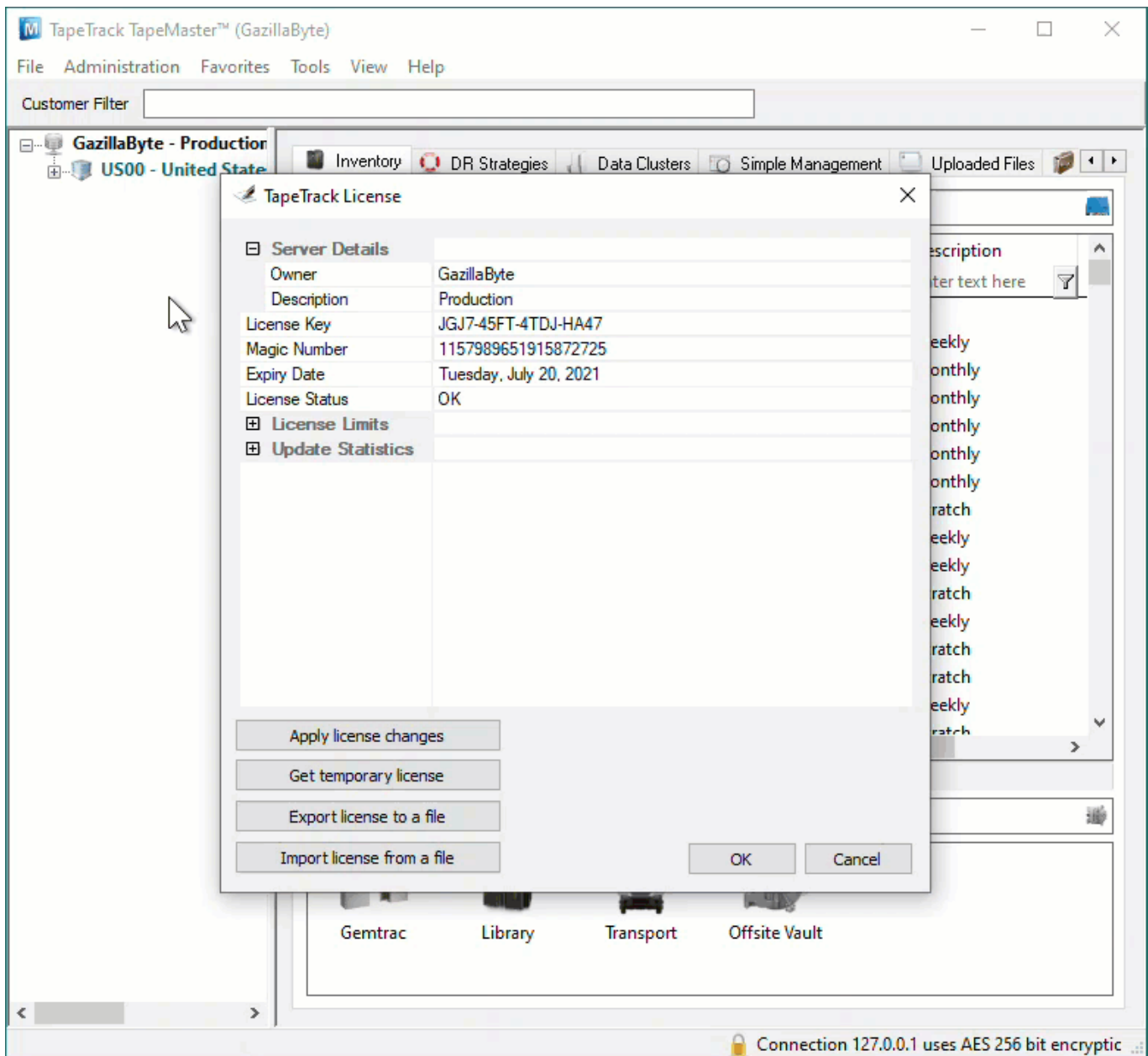
If you are close to your expiry date you will receive a warning about a short expiry date, click Yes to continue.

Save the file with a descriptive name (e.g.current_license.cfg) in a known location.



Update License Details

Change the expiry date to the new end date and click **Apply license changes** and **Export license to file**, this time saving under a different name (e.g. license_export.cfg).



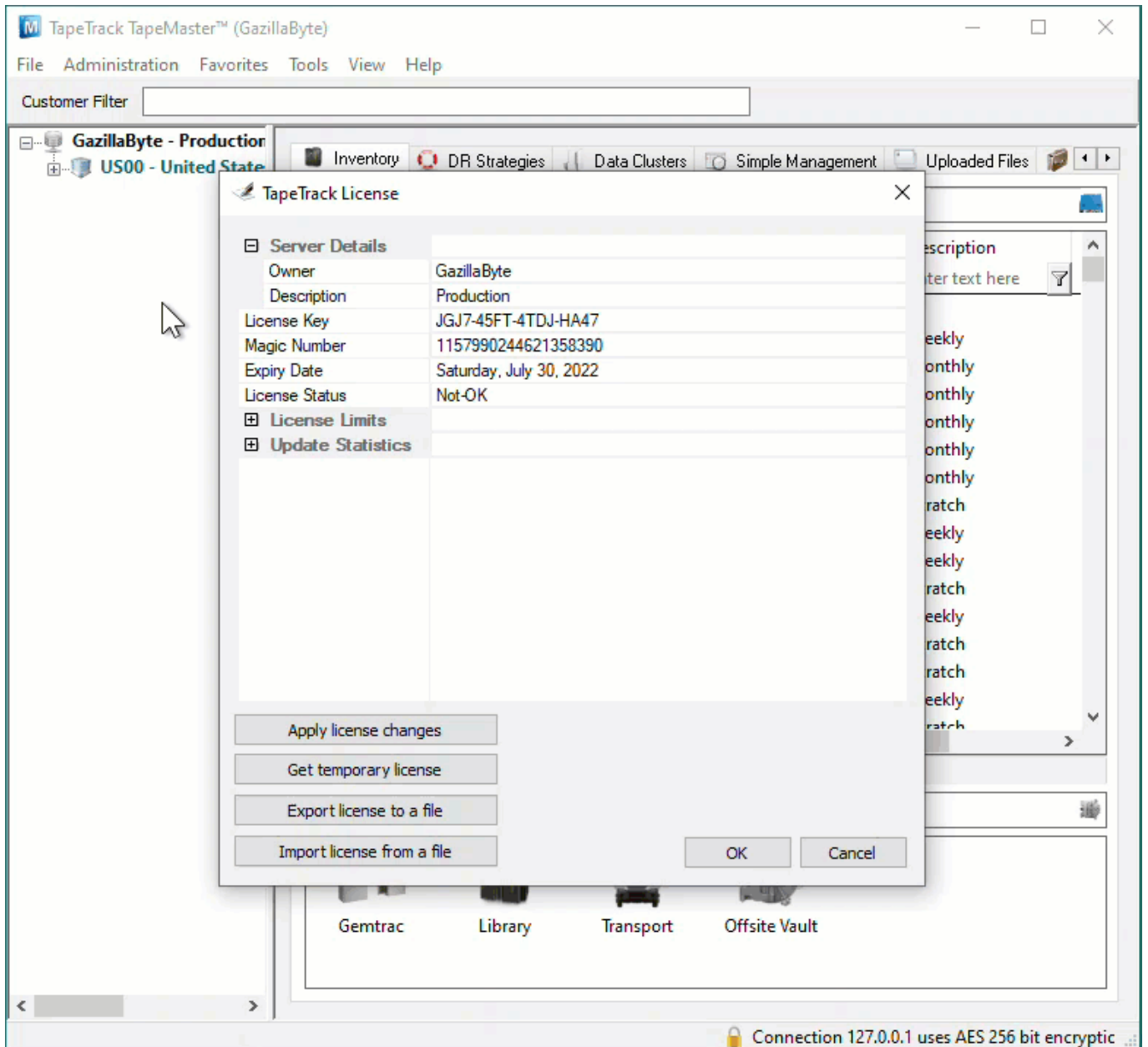
Import License Details

To reinstate current license, click **Import license from a file** and select the first file exported (e.g.current_license.cfg).

Click **Apply license changes** to reinstate your current license values.



If you have left this process until after your license has expired, rather than import your current license file, clicking **Get temporary license** will give a 12 day license to enable you to keep using TapeTrack until your new key is applied. This function only works if your computer has internet access.

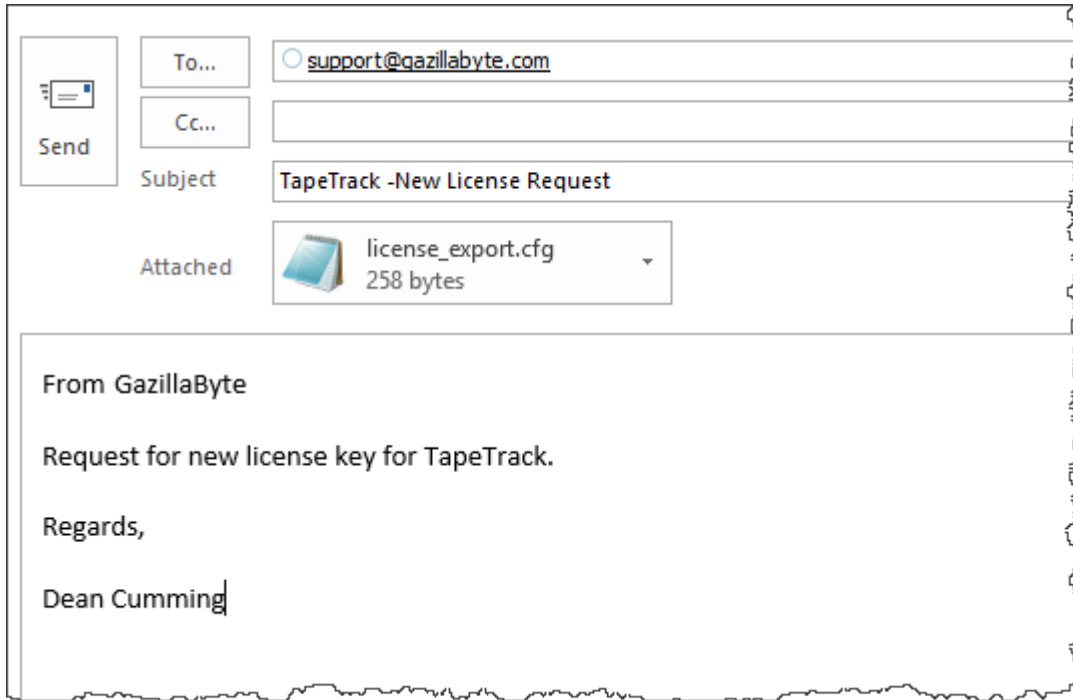


Click OK to exit TapeTrack License window.

Forward License

Forward the exported file (with new expiry date) to support@gazillabyte.com with a subject indicating that you require a new license key.

Once a new key has been cut you will receive a new license configuration file with instructions for installation.



From: <https://rtfm.tapetrack.com/> - **TapeTrack Documentation**

Permanent link: https://rtfm.tapetrack.com/master/full_license?rev=1625710305

Last update: **2025/01/21 22:07**

