

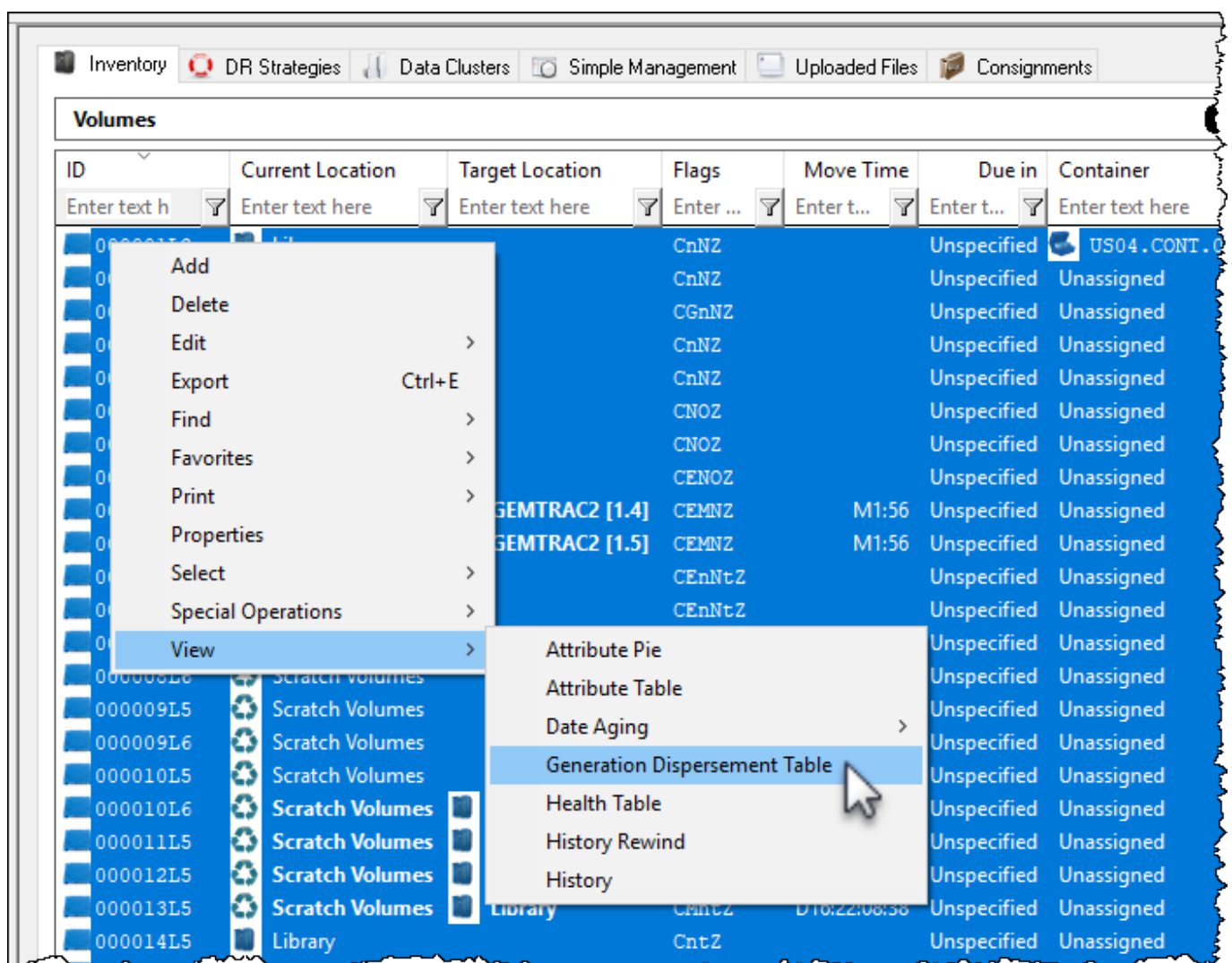
Generation Dispersement Table

The Generation Dispersement function displays a table of selected volumes based on their generation (ie. LTO 1, LTO 2) and current scratch (Z flag) status.

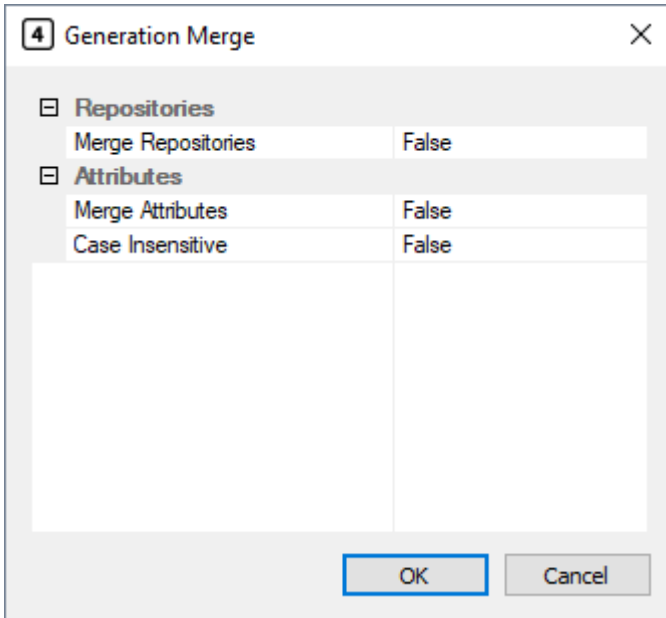
View Generation Dispersement Table

Select volumes to be included in table by either right-click in the volume window and Select → All or Ctrl+ A to select all, or range select by Shift+Click and/or Ctrl + click.

Right-click highlighted volumes and select View → Generation Dispersement Table.



Select from the popup whether you want the results to merge repositories and/or Attributes as well as whether or not to ignore or include case sensitivity.



No Merge In Table Results

Leaving all fields set to false will display the selected volume quantities in the **Generation Dispersement Table** separated by current repository, Attribute value, scratch status and volume generation (both scratch and non scratch).

Generation Dispersement Table

Repository	Attribute	Total Z	Total !Z	Gen-0 Z	Gen-0 !Z	Gen-3 Z	Gen-3 !Z	Gen-5 Z	Gen-5 !Z
Enter text here	Enter text h	En...	En...	En...	En...	En...	En...	En...	En...
Library	Server 1	4	0	0	0	1	0	3	
Library	Server 2	6	0	0	0	0	0	5	
Offsite Vault	Server 2	1	0	0	0	0	0	0	
Offsite Vault	Server 1	2	0	0	0	0	0	1	
Scratch Volumes	Server 2	5	0	0	0	0	0	2	
Scratch Volumes	Server 1	6	0	0	0	0	0	5	
Total		24	0	0	0	1	0	16	

Merge Repositories in Table Results

Setting **Merge Repositories** to True will display results in table the selected volume quantities in the **Generation Dispersement Table** separated by Attribute value, scratch status and volume generation (both scratch and non scratch).

Generation Dispersement Table

Repository	Attribute	Total Z	Total !Z	Gen-0 Z	Gen-...	Gen-3 Z	Gen-...	Gen-5 Z
Enter text here	Enter text here	E...	E...	E...	E...	E...	E...	E...
	Server 1	12	0	0	0	1	0	9
	Server 2	12	0	0	0	0	0	7
	Total	24	0	0	0	1	0	16

Merge Attributes In Table Results

Setting **Merge Attributes** to True will display the selected volume quantities in the **Generation Dispersement Table** separated by current repository, scratch status and volume generation.

Generation Dispersement Table

Repository	Attribute	Total Z	Total !Z	Gen-0 Z	Gen-0 !Z	Gen-3 Z	Gen-3 !Z	Gen-5 Z	Gen-5 !Z
Enter text here	Ente...	En...	En...	En...	En...	En...	En...	En...	En...
	Library	10	0	0	0	1	0	8	0
	Offsite Vault	3	0	0	0	0	0	1	0
	Scratch Volumes	11	0	0	0	0	0	7	0
	Total	24	0	0	0	1	0	16	0

Merge Repositories And Attributes In Table Results

Setting **Merge Repositories** and **Merge Attributes** to True will display the selected volume quantities in the **Generation Dispersement Table** separated by scratch status and volume generation.

Repository	Attribute	Total Z	Total !Z	Gen-0 Z	Gen-...	Gen-3 Z	Gen-...	Gen-5 Z
Enter text here	Enter text here	E... <input type="text"/>	E... <input type="text"/>	E... <input type="text"/>	E... <input type="text"/>	E... <input type="text"/>	E... <input type="text"/>	E... <input type="text"/>
		24	0	0	0	1	0	16
<input checked="" type="checkbox"/> Total		24	0	0	0	1	0	16

Case Insensitive In Table Results

Case Insensitive allows the option of grouping or separating attribute values based on being identical except for case.

Setting **Case Insensitive** to False will treat Server 1 and server 1 as separate or individual entries.

Repository	Attribute	Total Z	Total !Z	Gen-0 Z	Gen-...	Gen-3 Z	Gen-...	Gen-5 Z
Enter text here	Enter text here	E... <input type="text"/>	E... <input type="text"/>	E... <input type="text"/>	E... <input type="text"/>	E... <input type="text"/>	E... <input type="text"/>	E... <input type="text"/>
<input checked="" type="checkbox"/> Library	Server 1	3	0	0	0	0	0	3
<input checked="" type="checkbox"/> Library	Server 2	6	0	0	0	0	0	5
<input checked="" type="checkbox"/> Library	server 1	1	0	0	0	1	0	0
<input checked="" type="checkbox"/> Offsite Vault	Server 1	2	0	0	0	0	0	1
<input checked="" type="checkbox"/> Offsite Vault	Server 2	1	0	0	0	0	0	0
<input checked="" type="checkbox"/> Scratch Volumes	Server 2	4	0	0	0	0	0	1
<input checked="" type="checkbox"/> Scratch Volumes	Server 1	6	0	0	0	0	0	5
<input checked="" type="checkbox"/> Scratch Volumes	server 2	1	0	0	0	0	0	0
<input checked="" type="checkbox"/> Total		24	0	0	0	1	0	16

Setting **Case Insensitive** to True will treat Server 1 and server 1 as the same entry.

Generation Dispersement Table

Repository	Attribute	Total Z	Total !Z	Gen-0 Z	Gen-...	Gen-3 Z	Gen-...	Gen-5 Z
Enter text here	Enter text here	E... <input type="text"/>	E... <input type="text"/>	E... <input type="text"/>	E... <input type="text"/>	E... <input type="text"/>	E... <input type="text"/>	E... <input type="text"/>
Library	Server 2	6	0	0	0	0	0	0
Library	server 1	4	0	0	0	1	0	3
Offsite Vault	Server 1	2	0	0	0	0	0	1
Offsite Vault	Server 2	1	0	0	0	0	0	0
Scratch Volumes	Server 1	6	0	0	0	0	0	5
Scratch Volumes	server 2	5	0	0	0	0	0	2
Total		24	0	0	0	1	0	16

Close the report by clicking the X at the top right corner.

From: <https://rtfm.tapetrack.com/> - **TapeTrack Documentation**

Permanent link: https://rtfm.tapetrack.com/master/generation_dispersement

Last update: **2025/01/21 22:07**

