

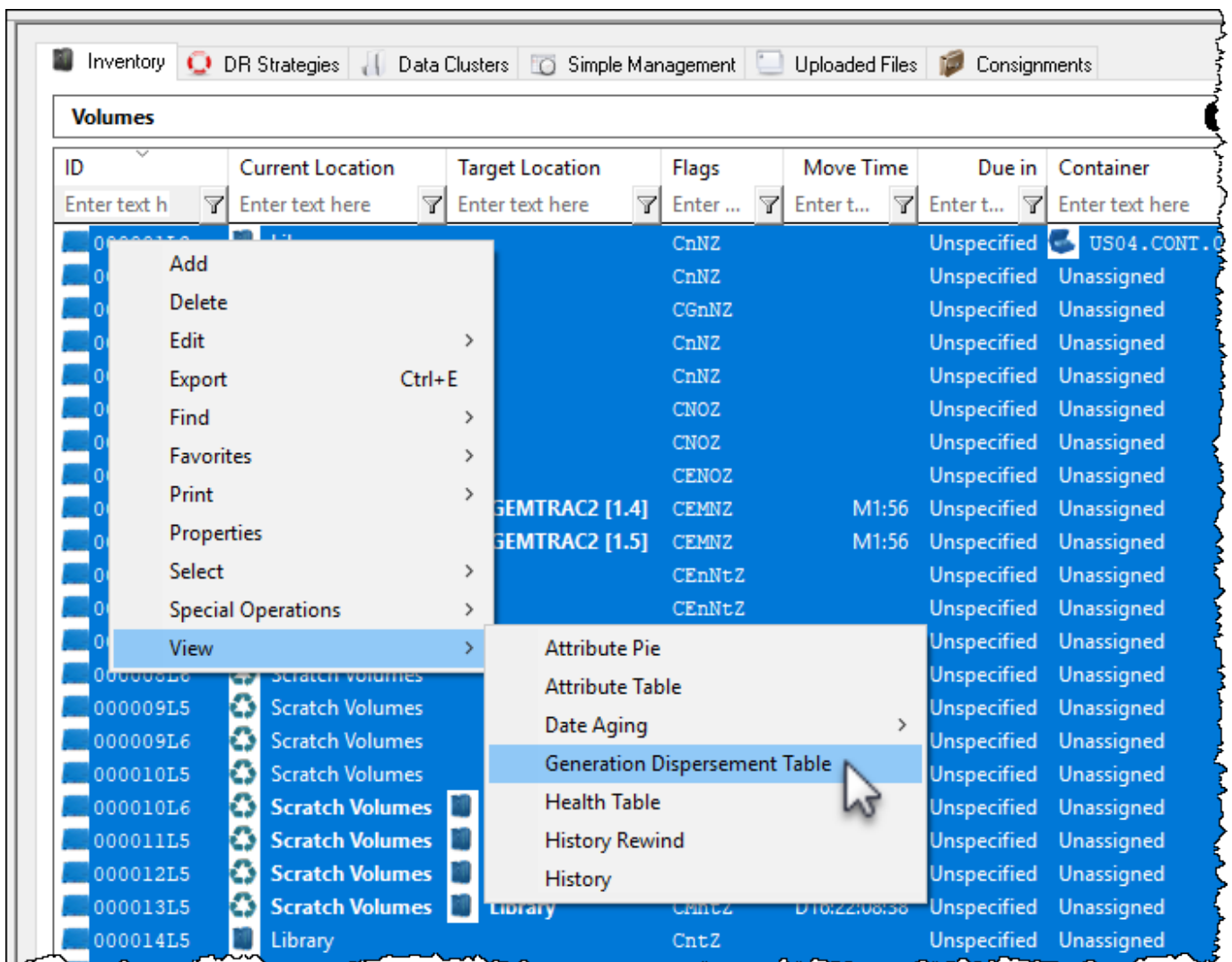
# Generation Dispersement Table

The Generation Dispersement function displays a table of selected volumes based on their generation (ie. LTO 1, LTO 2) and current scratch (Z flag) status.

## View Generation Dispersement Table

Select volumes to be included in table by either right click in the volume window and Select → All or Ctrl + A to select all, or range select by shift + click and/or Ctrl + click.

Right-click highlighted volumes and select View → Generation Dispersement Table.



Select from the popup whether you want the currently set attribute values to be included in the displayed table.



### Include Currently Set Attributes In Table

Selecting Yes to include the currently set attribute will display the selected volume quantities in the **Generation Dispersement Table** separated by current repository, attribute value, scratch status and volume generation (both scratch and non scratch).

### Exclude Currently Set Attributes In Table

Selecting Yes to include the currently set attribute will display the selected volume quantities in the **Generation Dispersement Table** separated by current repository, scratch status and volume generation.

Repository	Attribute	Total Z	Total !Z	Gen-0 Z	Gen-0 !Z	Gen-3 Z	Gen-3 !Z	Gen-5 Z	Gen-5 !Z	Ge...
Enter text here	Ente...	En...	En...	En...	En...	En...	En...	En...	En...	En...
Library		10	0	0	0	1	0	8	0	
Offsite Vault		3	0	0	0	0	0	1	0	
Scratch Volumes		11	0	0	0	0	0	7	0	
Total		24	0	0	0	1	0	16	0	

Volumes are displayed in columns showing total, generational totals scratch (e.g. LTO & Z) and generational totals.

Close the report by clicking the X at the top right corner.

From:  
<https://rtfm.tapetrack.com/> - **TapeTrack Documentation**

Permanent link:  
[https://rtfm.tapetrack.com/master/generation\\_dispersement?rev=1528330095](https://rtfm.tapetrack.com/master/generation_dispersement?rev=1528330095)

Last update: **2025/01/21 22:07**

