

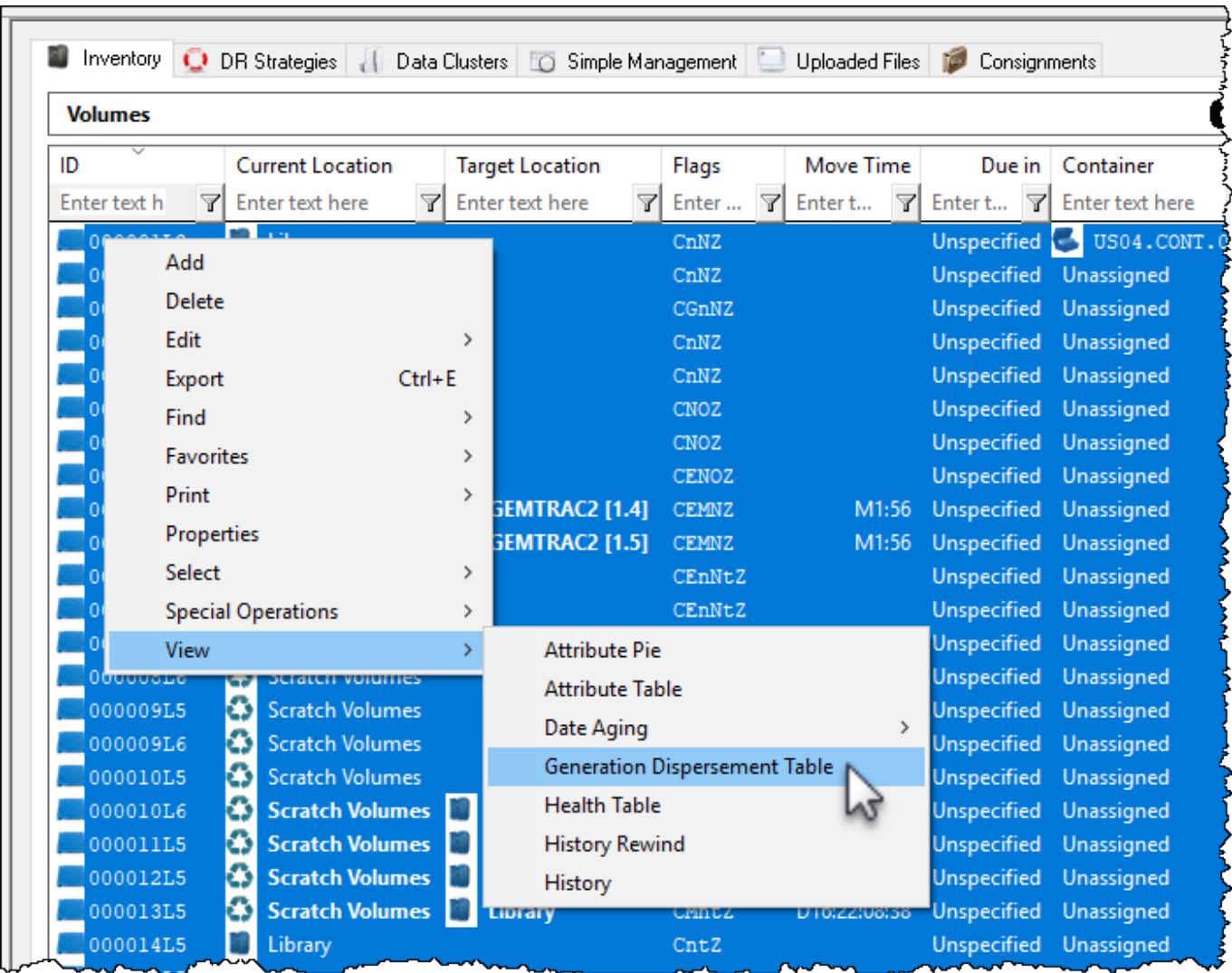
# Generation Dispersement Table

The Generation Dispersement function displays a table of selected volumes based on their generation (ie. LTO 1, LTO 2) and current scratch (Z flag) status.

## View Generation Dispersement Table

Select volumes to be included in table by either right click in the volume window and Select → All or Ctrl + A to select all, or range select by shift + click and/or Ctrl + click.

Right-click highlighted volumes and select View → Generation Dispersement Table.



Select from the popup whether you want the [currently set attribute](#) values to be included in the displayed table.

4

Generation Merge

Repositories

Merge Repositories

False

Attributes

Merge Attributes

False

Case Insensitive

False

OK

Cancel

Include Currently Set Attributes In Table

Selecting Yes to include the currently set attribute will display the selected volume quantities in the **Generation Dispersement Table** separated by current repository, attribute value, scratch status and volume generation (both scratch and non scratch).

Generation Dispersement Table

Repository	Attribute	Total Z	Total !Z	Gen-0 Z	Gen-0 !Z	Gen-3 Z	Gen-3 !Z	Gen-5 Z	Gen-5 !Z
Enter text here	Enter text here	En...	En...	En...	En...	En...	En...	En...	En...
Library	Server 1	4	0	0	0	1	0	3	
Library	Server 2	6	0	0	0	0	0	5	
Offsite Vault	Server 2	1	0	0	0	0	0	0	
Offsite Vault	Server 1	2	0	0	0	0	0	1	
Scratch Volumes	Server 2	5	0	0	0	0	0	2	
Scratch Volumes	Server 1	6	0	0	0	0	0	5	
Total		24	0	0	0	1	0	16	

Exclude Currently Set Attributes In Table

Selecting No to include the currently set attribute will display the selected volume quantities in the **Generation Dispersement Table** separated by current repository, scratch status and volume generation.

Generation Dispersement Table

Repository	Attribute	Total Z	Total !Z	Gen-0 Z	Gen-0 !Z	Gen-3 Z	Gen-3 !Z	Gen-5 Z	Gen-5 !Z	Gen-8 Z	Gen-8 !Z
Enter text here	Ente...	En...	En...	En...	En...	En...	En...	En...	En...	En...	En...
Library		10	0	0	0	1	0	8	0		
Offsite Vault		3	0	0	0	0	0	1	0		
Scratch Volumes		11	0	0	0	0	0	7	0		
Total		24	0	0	0	1	0	16	0		

Close the report by clicking the X at the top right corner.

From:

<https://rtfm.tapetrack.com/> - **TapeTrack Documentation**

Permanent link:

[https://rtfm.tapetrack.com/master/generation\\_dispersement?rev=1528331281](https://rtfm.tapetrack.com/master/generation_dispersement?rev=1528331281)

Last update:

2025/01/21 22:07

