

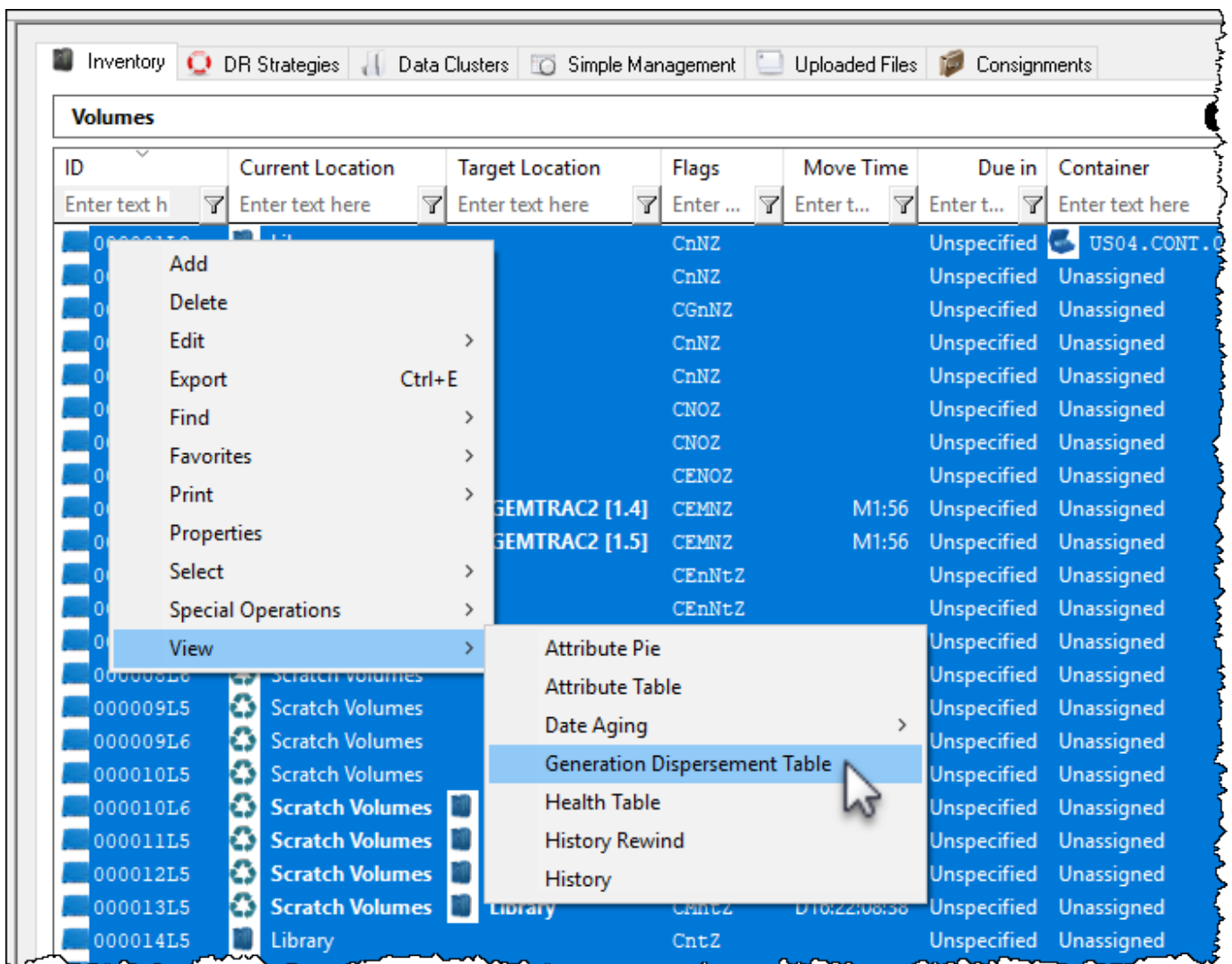
# Generation Dispersement Table

The Generation Dispersement function displays a table of selected volumes based on their generation (ie. LTO 1, LTO 2) and current scratch (Z flag) status.

## View Generation Dispersement Table

Select volumes to be included in table by either right click in the volume window and Select → All or Ctrl + A to select all, or range select by shift + click and/or Ctrl + click.

Right-click highlighted volumes and select View → Generation Dispersement Table.



Select from the popup whether you want the results to merge repositories and/or attributes as well as whether or not to ignore or include case sensitivity.



### No Merge In Table Results

Leaving all fields set to false will display the selected volume quantities in the **Generation Dispersement Table** separated by current repository, attribute value, scratch status and volume generation (both scratch and non scratch).

Repository	Attribute	Total Z	Total !Z	Gen-0 Z	Gen-0 !Z	Gen-3 Z	Gen-3 !Z	Gen-5 Z	Gen-5 !Z
Library	Server 1	4	0	0	0	1	0	3	0
Library	Server 2	6	0	0	0	0	0	5	0
Offsite Vault	Server 2	1	0	0	0	0	0	0	0
Offsite Vault	Server 1	2	0	0	0	0	0	1	0
Scratch Volumes	Server 2	5	0	0	0	0	0	2	0
Scratch Volumes	Server 1	6	0	0	0	0	0	5	0
Total		24	0	0	0	1	0	16	0

### Merge Repositories in Table Results

Setting **Merge Repositories** to True will display results in table the selected volume quantities in the **Generation Dispersement Table** separated by attribute value, scratch status and volume generation (both scratch and non scratch).

Repository	Attribute	Total Z	Total !Z	Gen-0 Z	Gen-...	Gen-3 Z	Gen-...	Gen-5 Z
Enter text here	Enter text here	E...	E...	E...	E...	E...	E...	E...
	Server 1	12	0	0	0	1	0	9
	Server 2	12	0	0	0	0	0	7
☛ Total		24	0	0	0	1	0	16

### Merge Attributes In Table Results

Setting **Merge Attributes** to True will display the selected volume quantities in the **Generation Dispersement Table** separated by current repository, scratch status and volume generation.

Repository	Attribute	Total Z	Total !Z	Gen-0 Z	Gen-0 !Z	Gen-3 Z	Gen-3 !Z	Gen-5 Z	Gen-5 !Z
Enter text here	Ente...	En...	En...	En...	En...	En...	En...	En...	En...
📁 Library		10	0	0	0	1	0	8	0
📁 Offsite Vault		3	0	0	0	0	0	1	0
♻️ Scratch Volumes		11	0	0	0	0	0	7	0
☛ Total		24	0	0	0	1	0	16	0

### Merge Repositories And Attributes In Table Results

Setting **Merge Repositories** and **Merge Attributes** to True will display the selected volume quantities in the **Generation Dispersement Table** separated by scratch status and volume generation.

**Generation Dispersement Table**

Repository	Attribute	Total Z	Total !Z	Gen-0 Z	Gen-...	Gen-3 Z	Gen-...	Gen-5 Z
Enter text here	Enter text here	E... E...	E... E...	E... E...	E... E...	E... E...	E... E...	E... E...
		24	0	0	0	1	0	16
Total		24	0	0	0	1	0	16

### Case Sensitivity In Table Results

Case sensitivity allows the option of grouping or separating attribute values based on being identical except for case.

Setting to false will treat Server 1 and server 1 as separate or individual entries.

Setting to true will treat Server 1 and server 1 as the same entry.

### Case Sensitivity False

**Generation Dispersement Table**

Repository	Attribute	Total Z	Total !Z	Gen-0 Z	Gen-...	Gen-3 Z	Gen-...	Gen-5 Z
Enter text here	Enter text here	E... E...	E... E...	E... E...	E... E...	E... E...	E... E...	E... E...
Library	Server 1	3	0	0	0	0	0	3
Library	Server 2	6	0	0	0	0	0	5
Library	server 1	1	0	0	0	1	0	0
Offsite Vault	Server 1	2	0	0	0	0	0	1
Offsite Vault	Server 2	1	0	0	0	0	0	0
Scratch Volumes	Server 2	4	0	0	0	0	0	1
Scratch Volumes	Server 1	6	0	0	0	0	0	5
Scratch Volumes	server 2	1	0	0	0	0	0	0
Total		24	0	0	0	1	0	16

### Case Sensitivity True

Generation Dispersement Table

Repository	Attribute	Total Z	Total !Z	Gen-0 Z	Gen-...	Gen-3 Z	Gen-...	Gen-5 Z
Enter text here	Enter text here	E... Y	E... Y	E... Y	E... Y	E... Y	E... Y	E... Y
Library	Server 2	6	0	0	0	0	0	0
Library	server 1	4	0	0	0	1	0	3
Offsite Vault	Server 1	2	0	0	0	0	0	1
Offsite Vault	Server 2	1	0	0	0	0	0	0
Scratch Volumes	Server 1	6	0	0	0	0	0	5
Scratch Volumes	server 2	5	0	0	0	0	0	2
<b>Total</b>		<b>24</b>	<b>0</b>	<b>0</b>	<b>0</b>	<b>1</b>	<b>0</b>	<b>16</b>

Close the report by clicking the X at the top right corner.

From: <https://rtfm.tapetrack.com/> - **TapeTrack Documentation**

Permanent link: [https://rtfm.tapetrack.com/master/generation\\_dispersement?rev=1528419192](https://rtfm.tapetrack.com/master/generation_dispersement?rev=1528419192)

Last update: **2025/01/21 22:07**

