

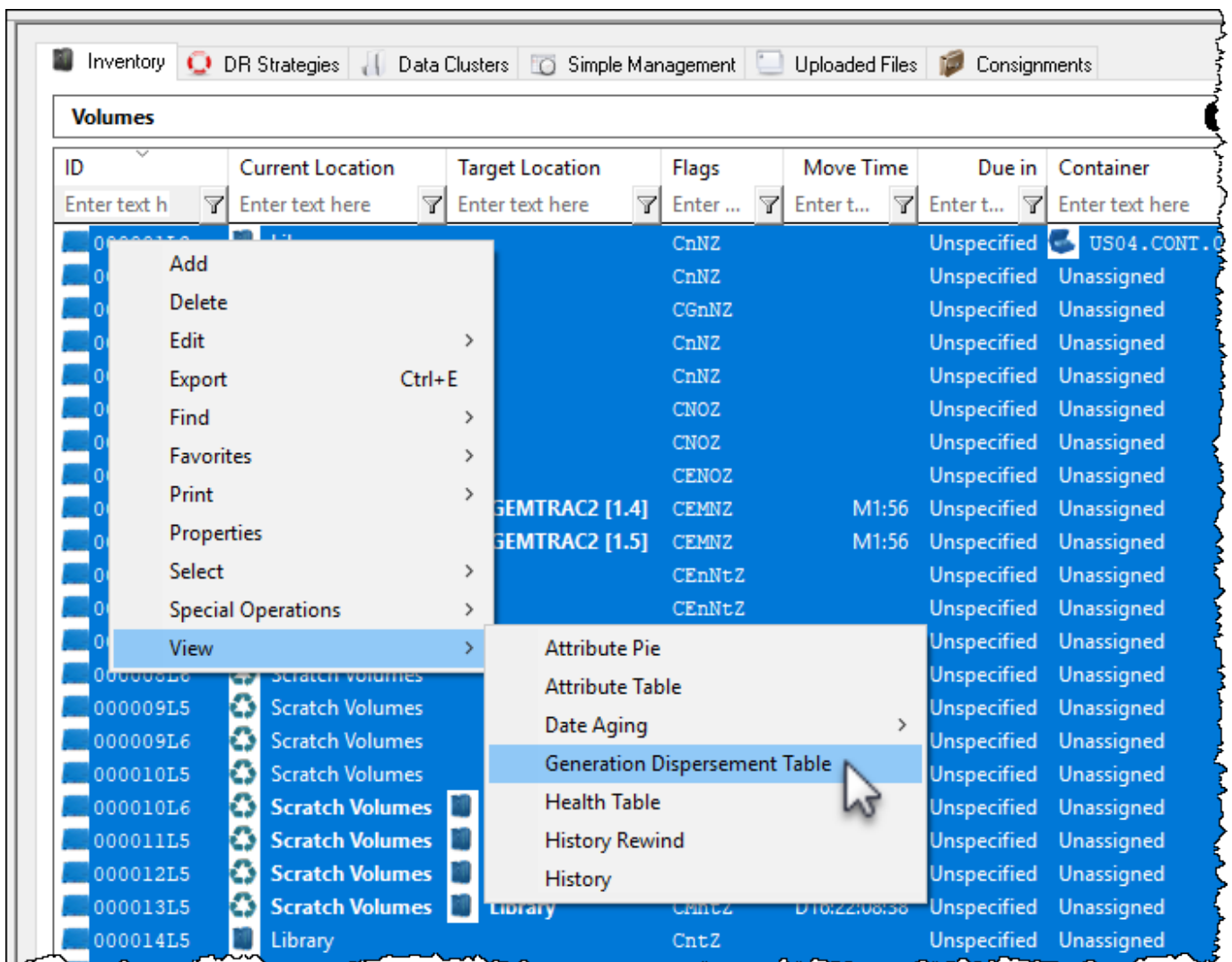
Generation Dispersement Table

The Generation Dispersement function displays a table of selected volumes based on their generation (ie. LTO 1, LTO 2) and current scratch (Z flag) status.

View Generation Dispersement Table

Select volumes to be included in table by either right click in the volume window and Select → All or Ctrl+ A to select all, or range select by Shift+Click and/or Ctrl + click.

Right-click highlighted volumes and select View → Generation Dispersement Table.



Select from the popup whether you want the results to merge repositories and/or Attributes as well as whether or not to ignore or include case sensitivity.



No Merge In Table Results

Leaving all fields set to false will display the selected volume quantities in the **Generation Dispersement Table** separated by current repository, Attribute value, scratch status and volume generation (both scratch and non scratch).

Generation Dispersement Table

| Repository | Attribute | Total Z | Total !Z | Gen-0 Z | Gen-0 !Z | Gen-3 Z | Gen-3 !Z | Gen-5 Z | Gen-5 !Z |
|-----------------|-----------|---------|----------|---------|----------|---------|----------|---------|----------|
| Library | Server 1 | 4 | 0 | 0 | 0 | 1 | 0 | 3 | 0 |
| Library | Server 2 | 6 | 0 | 0 | 0 | 0 | 0 | 5 | 0 |
| Offsite Vault | Server 2 | 1 | 0 | 0 | 0 | 0 | 0 | 0 | 0 |
| Offsite Vault | Server 1 | 2 | 0 | 0 | 0 | 0 | 0 | 1 | 0 |
| Scratch Volumes | Server 2 | 5 | 0 | 0 | 0 | 0 | 0 | 2 | 0 |
| Scratch Volumes | Server 1 | 6 | 0 | 0 | 0 | 0 | 0 | 5 | 0 |
| Total | | 24 | 0 | 0 | 0 | 1 | 0 | 16 | 0 |

Merge Repositories in Table Results

Setting **Merge Repositories** to True will display results in table the selected volume quantities in the **Generation Dispersement Table** separated by Attribute value, scratch status and volume generation (both scratch and non scratch).

| Repository | Attribute | Total Z | Total !Z | Gen-0 Z | Gen-... | Gen-3 Z | Gen-... | Gen-5 Z |
|-----------------|-----------------|---------|----------|---------|---------|---------|---------|---------|
| Enter text here | Enter text here | E... | E... | E... | E... | E... | E... | E... |
| | Server 1 | 12 | 0 | 0 | 0 | 1 | 0 | 9 |
| | Server 2 | 12 | 0 | 0 | 0 | 0 | 0 | 7 |
| ☛ Total | | 24 | 0 | 0 | 0 | 1 | 0 | 16 |

Merge Attributes In Table Results

Setting **Merge Attributes** to True will display the selected volume quantities in the **Generation Dispersment Table** separated by current repository, scratch status and volume generation.

| Repository | Attribute | Total Z | Total !Z | Gen-0 Z | Gen-0 !Z | Gen-3 Z | Gen-3 !Z | Gen-5 Z | Gen-5 !Z |
|--------------------|-----------|---------|----------|---------|----------|---------|----------|---------|----------|
| Enter text here | Ente... | En... | En... | En... | En... | En... | En... | En... | En... |
| 📁 Library | | 10 | 0 | 0 | 0 | 1 | 0 | 8 | 0 |
| 📁 Offsite Vault | | 3 | 0 | 0 | 0 | 0 | 0 | 1 | 0 |
| ♻️ Scratch Volumes | | 11 | 0 | 0 | 0 | 0 | 0 | 7 | 0 |
| ☛ Total | | 24 | 0 | 0 | 0 | 1 | 0 | 16 | 0 |

Merge Repositories And Attributes In Table Results

Setting **Merge Repositories** and **Merge Attributes** to True will display the selected volume quantities in the **Generation Dispersment Table** separated by scratch status and volume generation.

Generation Dispersement Table

| Repository | Attribute | Total Z | Total !Z | Gen-0 Z | Gen-... | Gen-3 Z | Gen-... | Gen-5 Z |
|-----------------|-----------------|-----------|-----------|-----------|-----------|-----------|-----------|-----------|
| Enter text here | Enter text here | E... E... | E... E... | E... E... | E... E... | E... E... | E... E... | E... E... |
| | | 24 | 0 | 0 | 0 | 1 | 0 | 16 |
| Total | | 24 | 0 | 0 | 0 | 1 | 0 | 16 |

Case Insensitive In Table Results

Case Insensitive allows the option of grouping or separating attribute values based on being identical except for case.

Setting **Case Insensitive** to False will treat Server 1 and server 1 as separate or individual entries.

Generation Dispersement Table

| Repository | Attribute | Total Z | Total !Z | Gen-0 Z | Gen-... | Gen-3 Z | Gen-... | Gen-5 Z |
|-----------------|-----------------|-----------|-----------|-----------|-----------|-----------|-----------|-----------|
| Enter text here | Enter text here | E... E... | E... E... | E... E... | E... E... | E... E... | E... E... | E... E... |
| Library | Server 1 | 3 | 0 | 0 | 0 | 0 | 0 | 3 |
| Library | Server 2 | 6 | 0 | 0 | 0 | 0 | 0 | 5 |
| Library | server 1 | 1 | 0 | 0 | 0 | 1 | 0 | 0 |
| Offsite Vault | Server 1 | 2 | 0 | 0 | 0 | 0 | 0 | 1 |
| Offsite Vault | Server 2 | 1 | 0 | 0 | 0 | 0 | 0 | 0 |
| Scratch Volumes | Server 2 | 4 | 0 | 0 | 0 | 0 | 0 | 1 |
| Scratch Volumes | Server 1 | 6 | 0 | 0 | 0 | 0 | 0 | 5 |
| Scratch Volumes | server 2 | 1 | 0 | 0 | 0 | 0 | 0 | 1 |
| Total | | 24 | 0 | 0 | 0 | 1 | 0 | 16 |

Setting **Case Insensitive** to True will treat Server 1 and server 1 as the same entry.

Generation Dispersement Table

| Repository | Attribute | Total Z | Total !Z | Gen-0 Z | Gen-... | Gen-3 Z | Gen-... | Gen-5 Z |
|-----------------|-----------------|---------|----------|---------|---------|---------|---------|---------|
| Enter text here | Enter text here | E... Y | E... Y | E... Y | E... Y | E... Y | E... Y | E... Y |
| Library | Server 2 | 6 | 0 | 0 | 0 | 0 | 0 | 0 |
| Library | server 1 | 4 | 0 | 0 | 0 | 1 | 0 | 3 |
| Offsite Vault | Server 1 | 2 | 0 | 0 | 0 | 0 | 0 | 1 |
| Offsite Vault | Server 2 | 1 | 0 | 0 | 0 | 0 | 0 | 0 |
| Scratch Volumes | Server 1 | 6 | 0 | 0 | 0 | 0 | 0 | 5 |
| Scratch Volumes | server 2 | 5 | 0 | 0 | 0 | 0 | 0 | 2 |
| Total | | 24 | 0 | 0 | 0 | 1 | 0 | 16 |

Close the report by clicking the X at the top right corner.

From: <https://rtfm.tapetrack.com/> - **TapeTrack Documentation**

Permanent link: https://rtfm.tapetrack.com/master/generation_dispersement?rev=1565826381

Last update: **2025/01/21 22:07**

