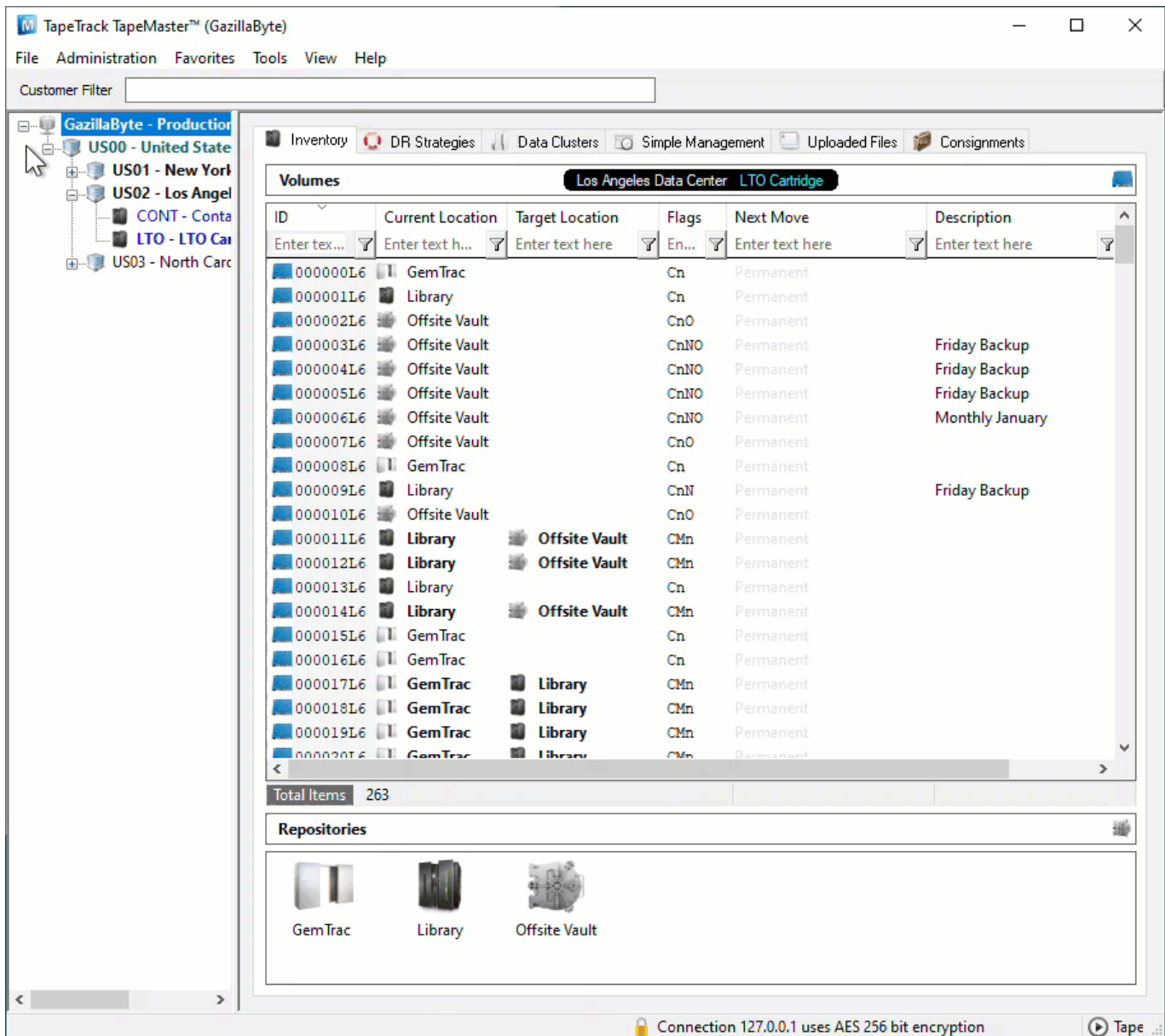


Importing TapeTrack License

While logged to in TapeMaster as [tapemaster](#), or [user-ID with tapemaster rights](#)

From the menu click Help → Framework Server Licensing

 If the menu option **Framework Server Licensing** is greyed out and inaccessible, you do not have sufficient privileges (tapemaster rights) to alter the software license



Click [Export license to a file](#) and save the file with a descriptive name (e.g. backup_license.cfg). Exporting your current license allows you to revert to your current license should something not work as expected while importing a new license. If your license has a short expiry you will receive a popup message showing the number of days left and asking if you want to save it, click Yes to continue.



Click Import License to open the Windows Open File dialog.



Select the new license config file you received and click Open to import the file.



Your expiry date should now be updated and License Status should read **OK**.

TapeTrack License

Server Details	
Owner	GazillaByte
Description	Production
License Key	HC8A-TUCC-UEJK-S248
Magic Number	1212031692099490966
Expiry Date	Wednesday, December 07, 2022
License Status	OK
License Limits	
Update Statistics	

Apply license changes

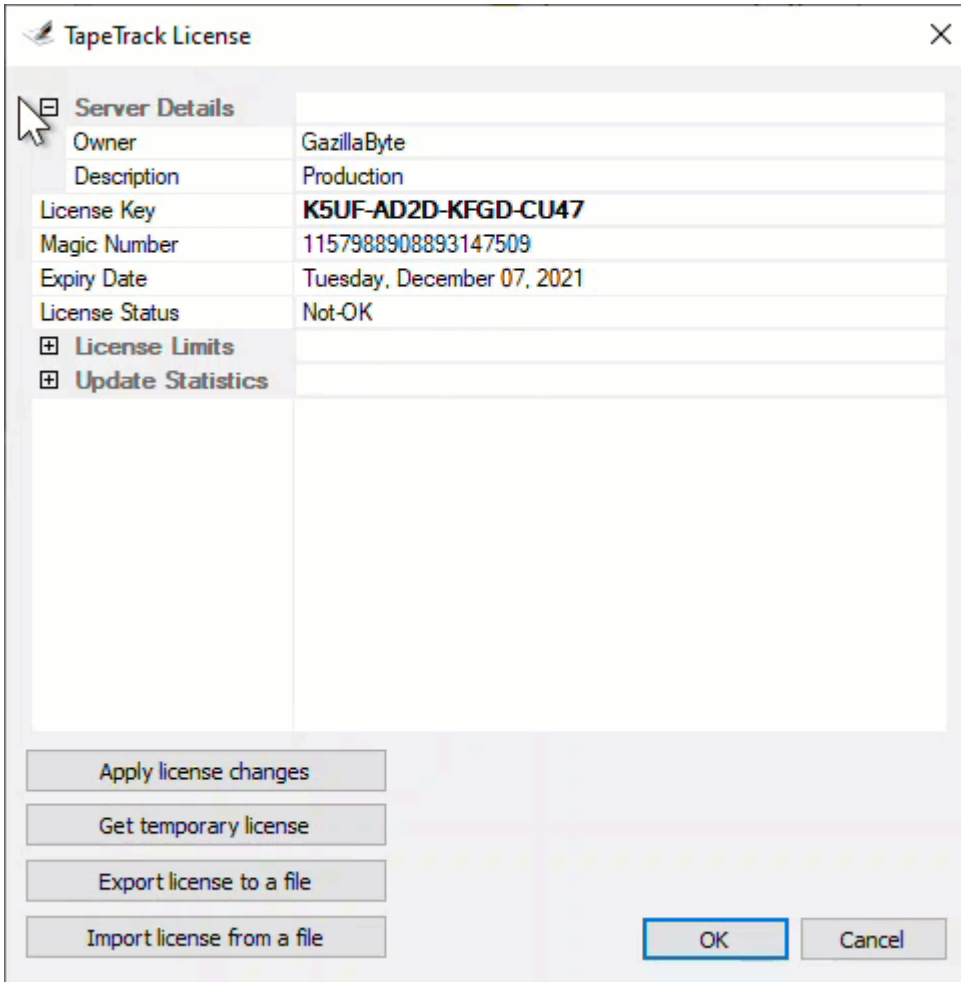
Get temporary license

Export license to a file

Import license from a file

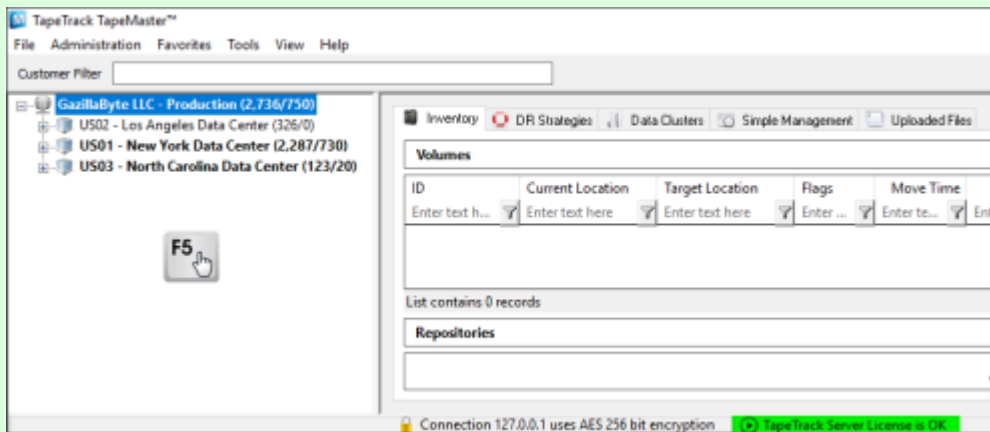
OK Cancel

On older releases, if your expiry date has updated but the license status still reads NOT-OK, click **Apply license changes** to save updated values.



Click OK to close the License Window.

Older versions may require you to press F5 while in the [customer tree](#) window to refresh new information.

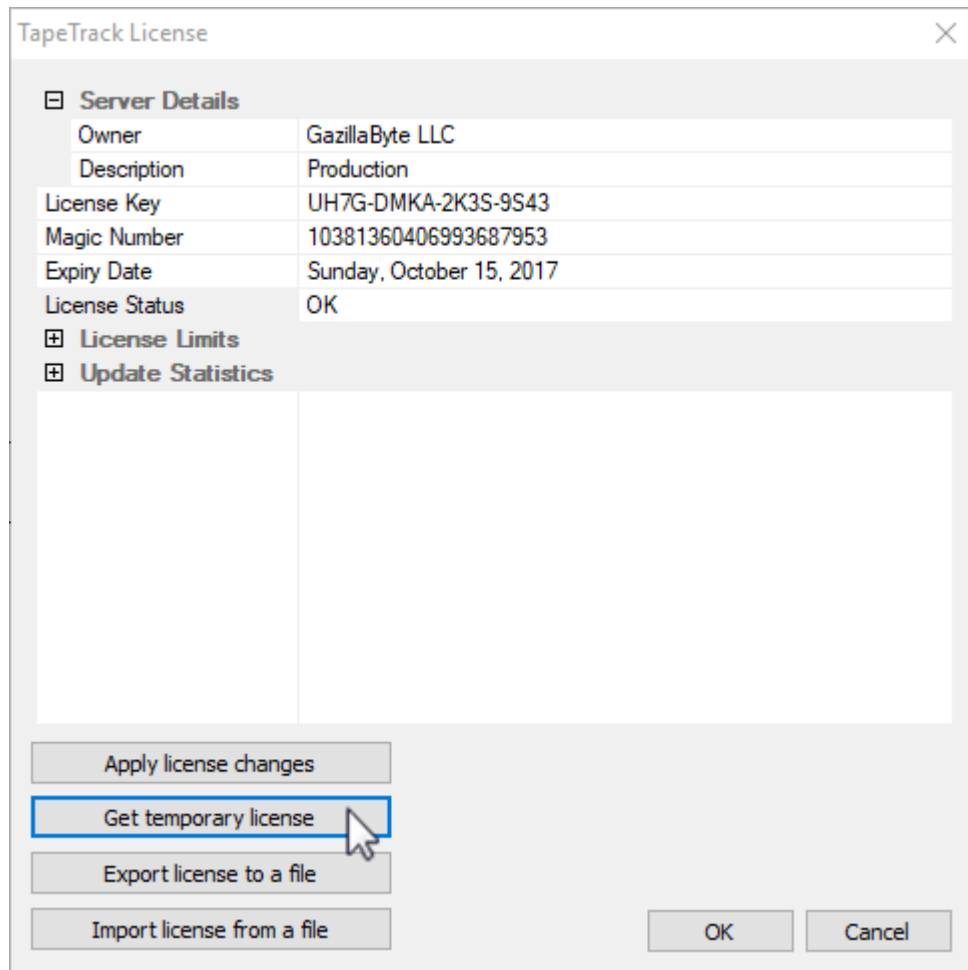


Troubleshooting

If after installing new license configuration file your **License Status** still reads **Not-OK**, reinstall old

configuration (backup-license.cfg) file using above instructions and contact help desk [support](#) for further information.

Alternatively you can click Get temporary license and OK from the Framework Server Licensing window to give you a 12 day expiry date to continue to use TapeTrack until your new key has been issued. Your computer must have internet access for the Get temporary license function to work.



From: <https://rtfm.tapetrack.com/> - **TapeTrack Documentation**

Permanent link: https://rtfm.tapetrack.com/master/import_license?rev=1638746138

Last update: **2025/01/21 22:07**

