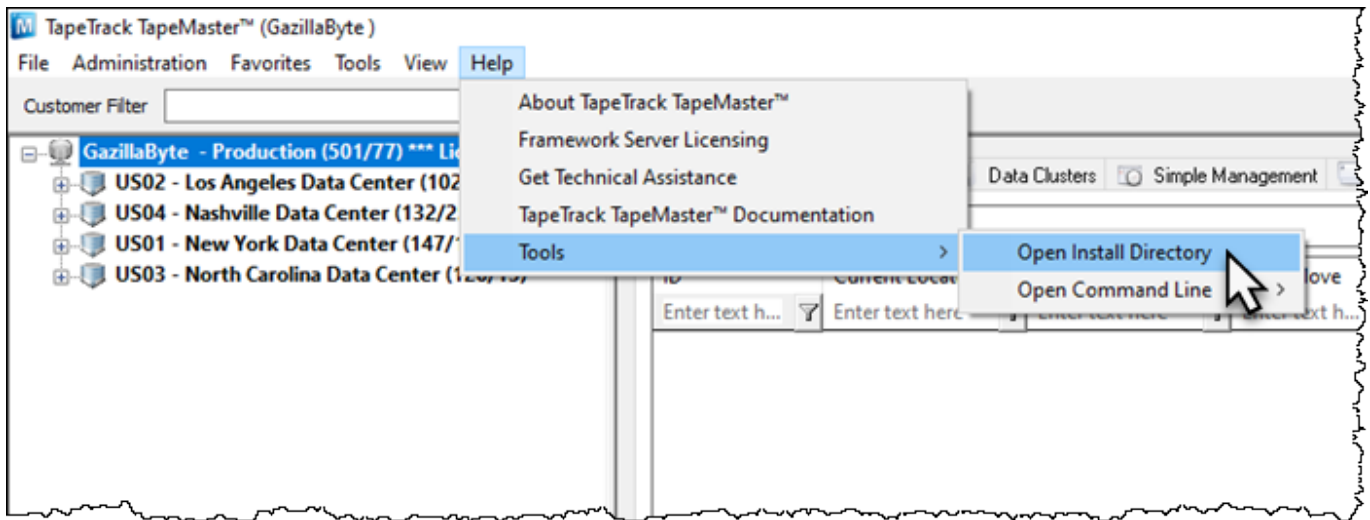


# Open Install Directory

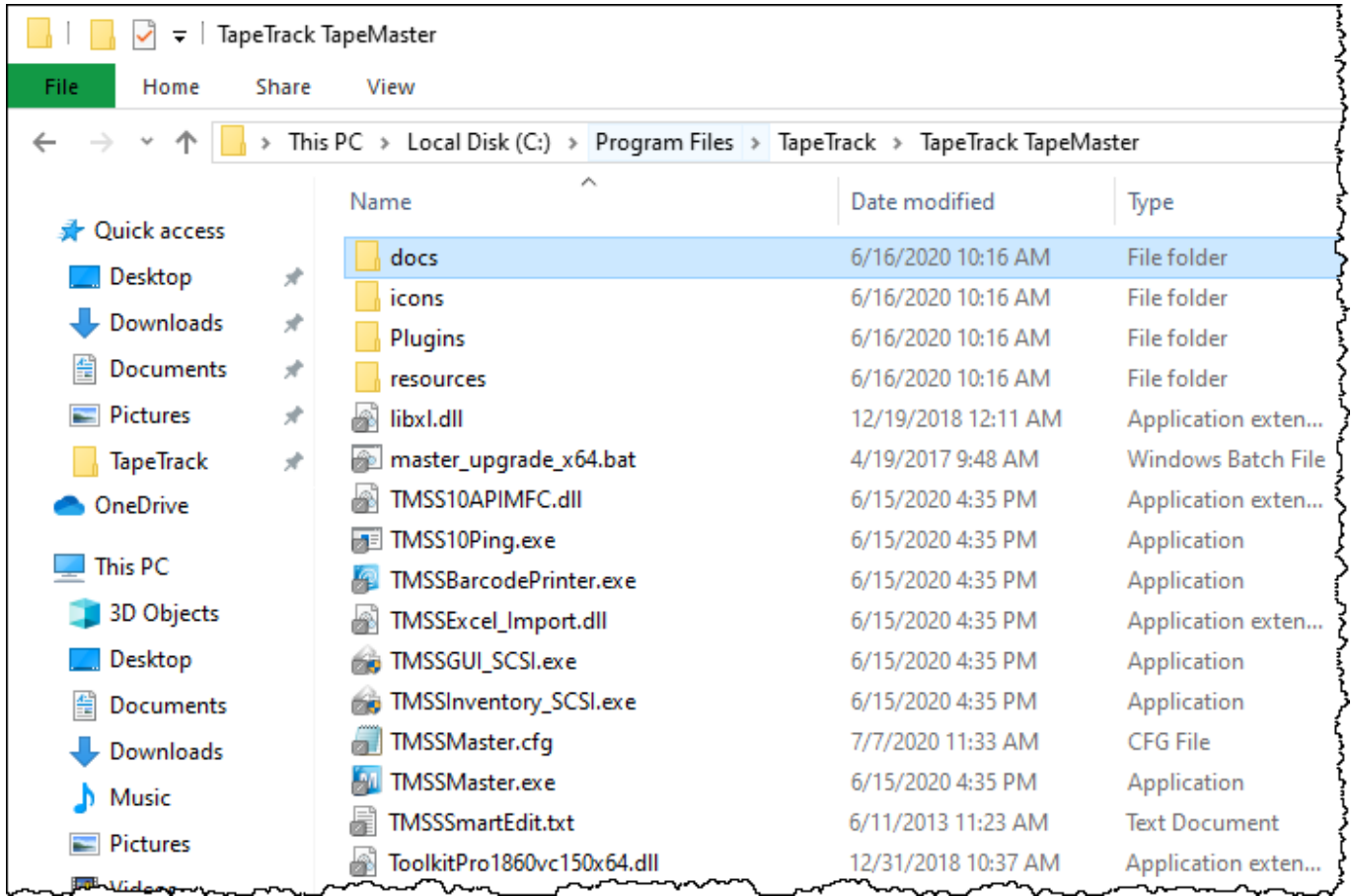
Open Install Directory function opens Window File Explorer in the location that TapeMaster is installed in.

## Open Install Directory Location

From the main menu, select Help > Tools > Open Install Directory.



From the directory, you can access all TapeMaster files, including the configuration file, [TMSS10Ping](#) and TapeTrack documents.



From: <https://rtfm.tapetrack.com/> - **TapeTrack Documentation**

Permanent link: [https://rtfm.tapetrack.com/master/install\\_directory?rev=1621958846](https://rtfm.tapetrack.com/master/install_directory?rev=1621958846)

Last update: **2025/01/21 22:07**

