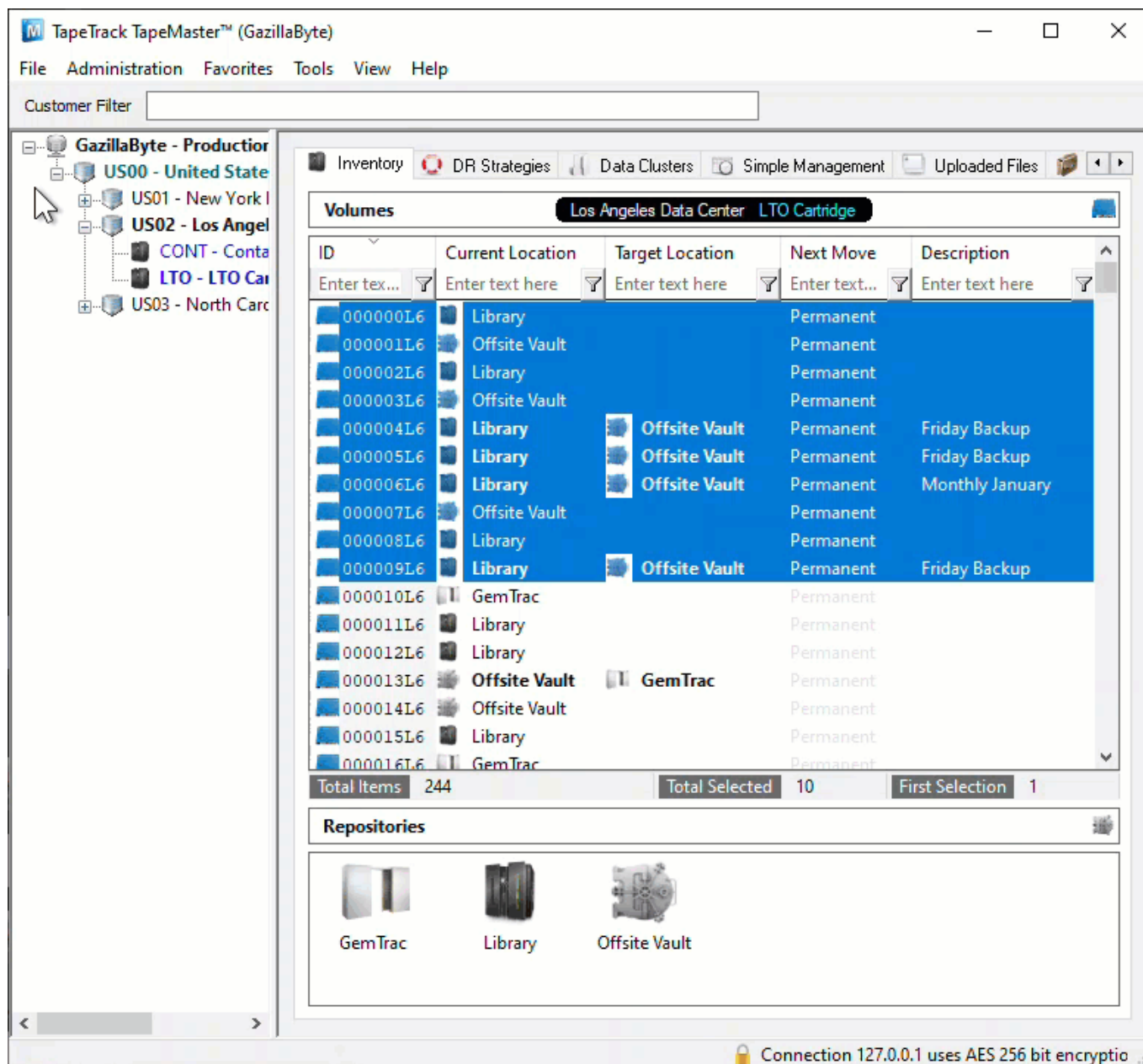


# Inventory Tab

The Inventory Administration Tab is the main access point for Asset Management in TapeMaster. It displays all of the [Volumes](#) and [Repositories](#) being managed in the selected [Customer/Media Type](#).



## Right-Click Options

- [Edit](#)
  - [Copy](#)
    - Attributes: Copies the displayed [attributes](#) of selected [Volumes](#) to the clipboard.
    - Containers: Copies the Container ID's (Cust.Media.Cont) the selected Volume/s are assigned to.
    - Unqualified Volumes: Copies the [unqualified Volume-ID's](#) (no Customer-ID or Media-ID) of the selected [Volumes](#).

- Unqualified Volumes (without suffix): Copies the [unqualified Volume-ID's](#) (no [Customer-ID](#) or [Media-ID](#)) without the suffix (e.g. 123456L6 will copy as 123456) of the selected [Volumes](#).
- Volumes (Ctrl\_C): Copies the [Volume-ID's](#) (including [Customer-ID](#) and [Media-ID](#)) of the selected [Volumes](#).
- Paste
  - Attributes: Pastes clipboard contents into the displayed Attribute of the selected [Volumes](#).
  - Select In List:
    - Attribute: Selects [Volume](#) from the inventory using the Attribute values in the clipboard.
    - Volume: Selects [Volume](#) from the inventory using the [volume-ID's](#) in the clipboard.
  - Volumes (Ctrl+V): When focus is in the inventory window, creates new [Volume](#) from the value/s in the clipboard. When focus is in the filter fields, pastes value into the filter.
  - Value by ID
    - Attribute: Pastes in Attribute values by [Volume-ID](#).
    - Long Barcode: Pastes in Long Barcode value to associated Hashed Volume-ID's.
    - Next Move: Pastes in next move date by [Volume-ID](#).
- Find
  - Notes: Display [Volume](#) notes from search criteria.
  - Datasets: Display [Volume](#) Datasets from search criteria.
- Favorites
  - Set: Add favorite flag to selected [Volumes](#).
  - Un-Set: Remove favorite flag to selected [Volumes](#).
- Reports
  - Attribute Table: Displays table listing and pie chart of selected [Volumes](#) Attribute values.
  - Catalog Table: Displays table of Catalog values.
  - Date Aging
    - Birthday: Displays a table and bar graph of selected [Volumes](#) birthday or creation date.
    - Expiry Date: Displays a table and bar graph of selected [Volumes](#) expiry date.
    - Last Audit Failure Time: Displays a table and bar graph of selected [Volumes](#) last audit failure.
    - Last Mount: Displays a table and bar graph of selected [Volumes](#) last mount date and time.
    - Last Move Time: Displays a table and bar graph of selected [Volumes](#) last move date and time.
    - Last Read Time: Displays a table and bar graph of selected [Volumes](#) last read time.
    - Last Sync: Displays a table and bar graph of selected [Volumes](#) last sync date and time.
    - Last Write Time: Displays a table and bar graph of selected [Volumes](#) last write date and time.
    - Last Update Time: Displays a table and bar graph of selected [Volumes](#) last update day and time.
    - Next Move: Displays a table and bar graph of selected [Volumes](#) next move date.
  - Generation Disbursement Table: Displays a table of selected [Volumes](#) based on

- volume generation (e.g. LTO 4, LTO 5 etc) as well as scratch status.
- Health Table
- **History Rewind**: Displays **Volume** location based on a date or range of dates.
- **History**: Displays **Volume** history including location, date, movement, scan and user information of selected **Volumes**.
- **Special Operations**
  - **Add Note**: Opens Add Note window to add a note to selected **Volumes**.
  - **Check for Duplicate within Customer**: Checks for duplicate Volume-ID's within the selected customers other media types.
  - **Capture Home Slot**: Sets currently assigned Slot as Home Slot.
  - **Confirm**: Confirms selected **Volumes** into their target **Repository**.
  - **Container**
    - **De-Register**: De-registers, or removes, a **Volume's** container status.
    - **Register**: Registers a Volume as a Container.
    - **Purge**: Removes all **Volumes** assigned to the container.
  - **Detect missing Volumes in Sequence**: Highlights any **Volumes** missing from a numerical sequence of selected **Volumes**.
  - **Modify**
    - **Assign to new/no Container**: Opens the Container Selection window to select container assignment.
    - **Data Cluster**: Opens Data Cluster Selection window to assign selected **Volumes** to a data cluster.
    - **Generation**: Assigns generation value to selected **Volumes**.
    - **Home Repository**: Assigns a Home Repository value to the selected **Volumes**.
    - **Flags**: Opens the Modify Flags window to add, remove or toggle the selected Volumes flags.
    - **Next Move**: Opens the Next Move Date Selection window to set the next move date for the selected **Volumes**.
  - **Scan**
    - **Scan to Add Volumes**: Opens the **Barcode Scanning Window** and add the **Volumes** being scanned to the selected **Customer** and **Media Type**.
    - **Scan to Select Volumes**: Opens the **Barcode Scanning Window** and select the **Volumes** being scanned in the **Volume List**.
  - **Search Next Move Dates**: Opens Next Move Date Search window, displaying Volume-ID's and move dates based on filter criteria.
  - **Show Next Move in Month View**: Opens a window displaying the **move** dates for the selected **Volume(s)** in a calendar format.
  - **Slots**
    - **Find Duplicate Slots**: Searches the current **Media Type** for any slots occupied by multiple **Volumes**.
  - **Support**
    - **Create Export File** Creates a TapeTrack export file to send to the GazillaByte helpdesk to help troubleshooting problems.
- **Special Printing**
  - **Labels**: Print barcode labels of selected **Volumes**.
- **Run Command**
  - **Eject Volumes (Netbackup)**
  - **Eject Volumes (Networker)**

- **Add (Insert)**: Add a new **Volume** to the current Inventory window.
  - **Delete (Delete)**: Delete the selected **Volumes**.
  - **Properties (Spacebar)**: Opens the Properties window for each of the selected **Volumes**.
  - **Refresh (F5)**: Refreshes the displayed data with the database.
  - **Swap Location (Backspace)**: Toggles the selected Slotted **Volumes** display between virtual and physical Slots.
  - **Toggle Warning Flag (F2)**: Adds or removes Warning Flag from selected **Volumes**.
  - **Toggle Move Lock Flag (F3)**: Adds or removes Move Lock Flag from selected **Volumes**.
  - **Confirm (F4)**: Confirms **Volumes** into the Target **Repository**.
- 

- **Copy Column**

- ID: Copies **Volume-ID's** of selected **Volumes** to Windows clipboard.
- Current Location: Copies Current Locations of selected **Volumes** to Windows clipboard.
- Target Location: Copies Target Locations of selected **Volumes** to Windows clipboard.
- Flags: Copies Flags of selected **Volumes** to Windows clipboard.
- Move Time: Copies Move times of selected **Volumes** to Windows clipboard.
- Due In: Copies Due In times of selected **Volumes** to Windows clipboard.
- Container: Copies assigned Containers of selected **Volumes** to Windows clipboard.
- Next Move: Copies Next Move dates of selected **Volumes** to Windows clipboard.
- Description: Copies Descriptions of selected **Volumes** to Windows clipboard.

- **Copy Unique Values**

- ID: Copies **Volume-ID's** of selected **Volumes** and displays unique values in a pie chart and list with totals.
- Current Location: Copies Current Locations of selected **Volumes** and displays unique values in a pie chart and list with totals.
- Target Location: Copies Target Locations of selected **Volumes** and displays unique values in a pie chart and list with totals.
- Flags: Copies Flag combinations of selected **Volumes** and displays unique values in a pie chart and list with totals.
- Move Time: Copies Move Times of selected **Volumes** and displays unique values in a pie chart and list with totals.
- Due In: Copies Due In times of selected **Volumes** and displays unique values in a pie chart and list with totals.
- Container: Copies assigned Containers of selected **Volumes** and displays unique values in a pie chart and list with totals.
- Next Move: Copies Next Move dates of selected **Volumes** and displays unique values in a pie chart and list with totals.
- Description: Copies Descriptions of selected **Volumes** and displays unique values in a pie chart and list with totals.

- **Export (Ctrl+E)**: Export selected **Volumes** to file, either PDF, CSV, Excel, Text or XML.

- **Filters**

- Clear All (Ctrl+F): Clear all filters.
- Save (Ctrl+K): Save current filters.
- Restore (Ctrl+L): Restore saved filters.

- **Print (Ctrl+P)**: Export selected **Volumes** to PDF.

- **Select**

- All: Selects all **Volume** of current Customer's media.
- Invert: Inverts selection of the selected **Volumes** of current Customer's Media

- Random: Selects a user set number of records at random.

- **View**

- Icon (Ctrl+1): Set inventory view to Icons.
- List (Ctrl+2): Set inventory view to List.
- Report (Ctrl+3): Set inventory view to Report.
- Small Icon (Ctrl+4): Set inventory view to Small Icons.

From:

<https://rtfm.tapetrack.com/> - **TapeTrack Documentation**

Permanent link:

[https://rtfm.tapetrack.com/master/inventory\\_right\\_menu?rev=1634515809](https://rtfm.tapetrack.com/master/inventory_right_menu?rev=1634515809)

Last update: **2025/01/21 22:07**

