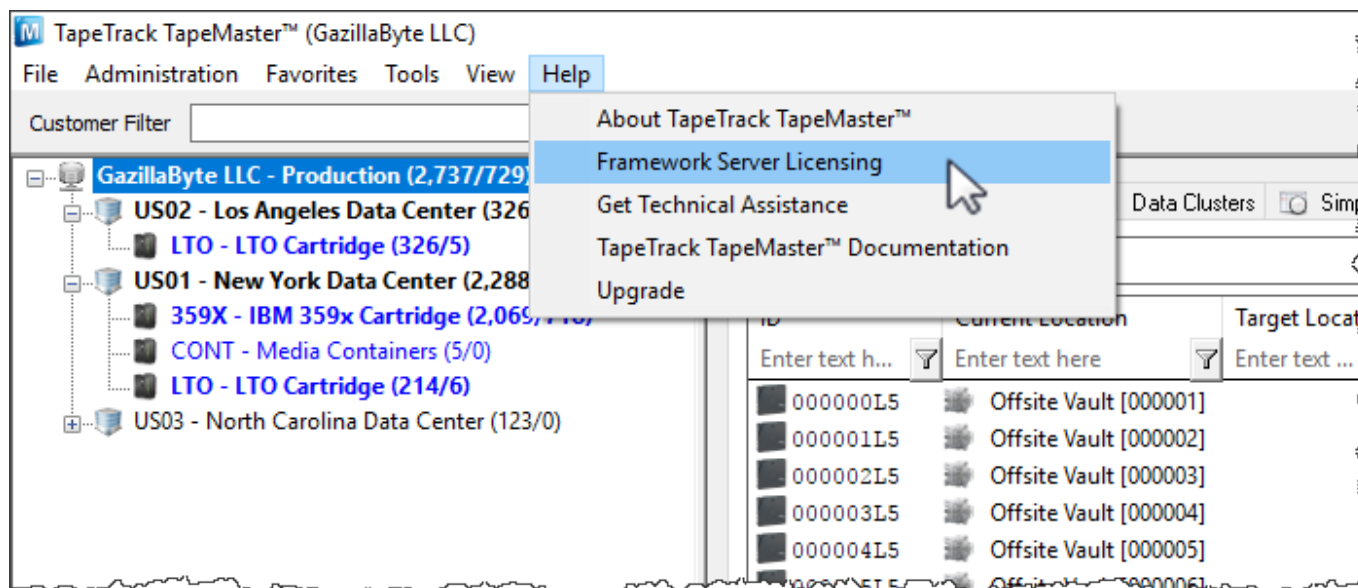
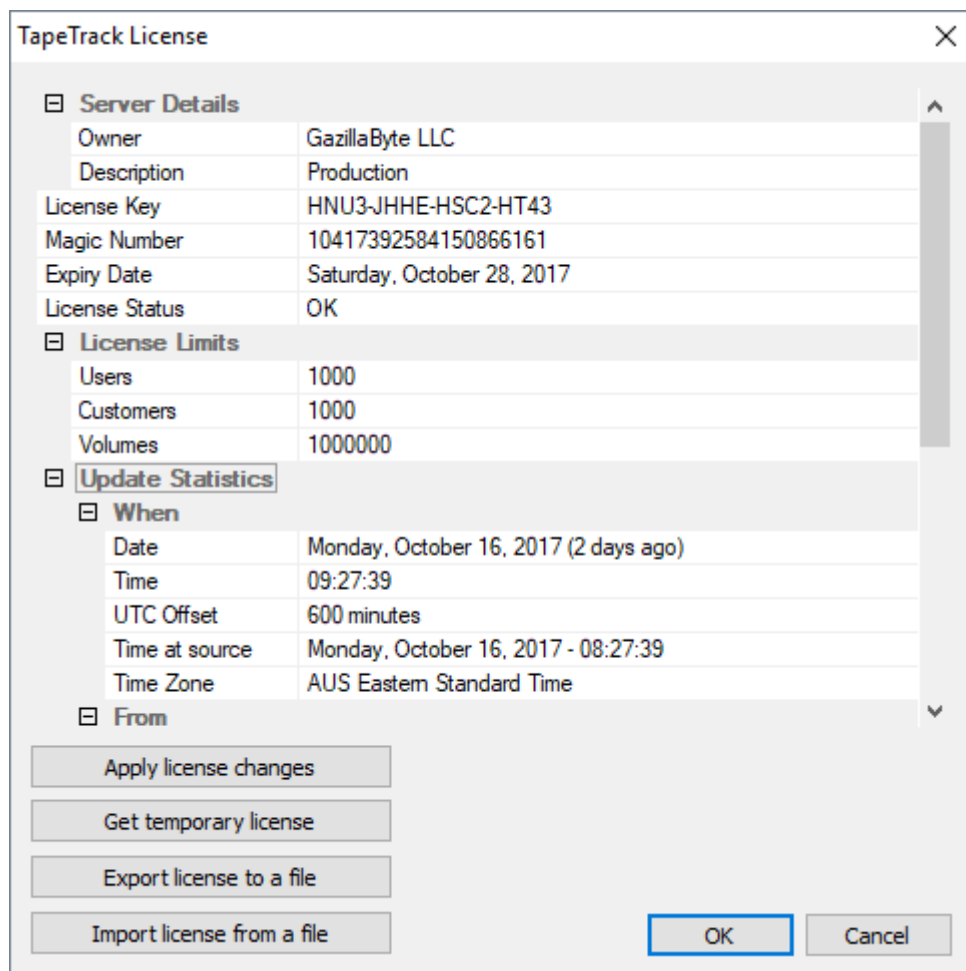


Framework Server Licensing

To view details on the Framework Server License, from the main menu select Help → Framework Server License.



This will open the Framework Server License window, displaying current software license details.



For information on making updates and/or alterations to your license refer to [Set License](#).

From:
<https://rtfm.tapetrack.com/> - **TapeTrack Documentation**

Permanent link:
<https://rtfm.tapetrack.com/master/licensing?rev=1508296717>

Last update: **2025/01/21 22:07**

