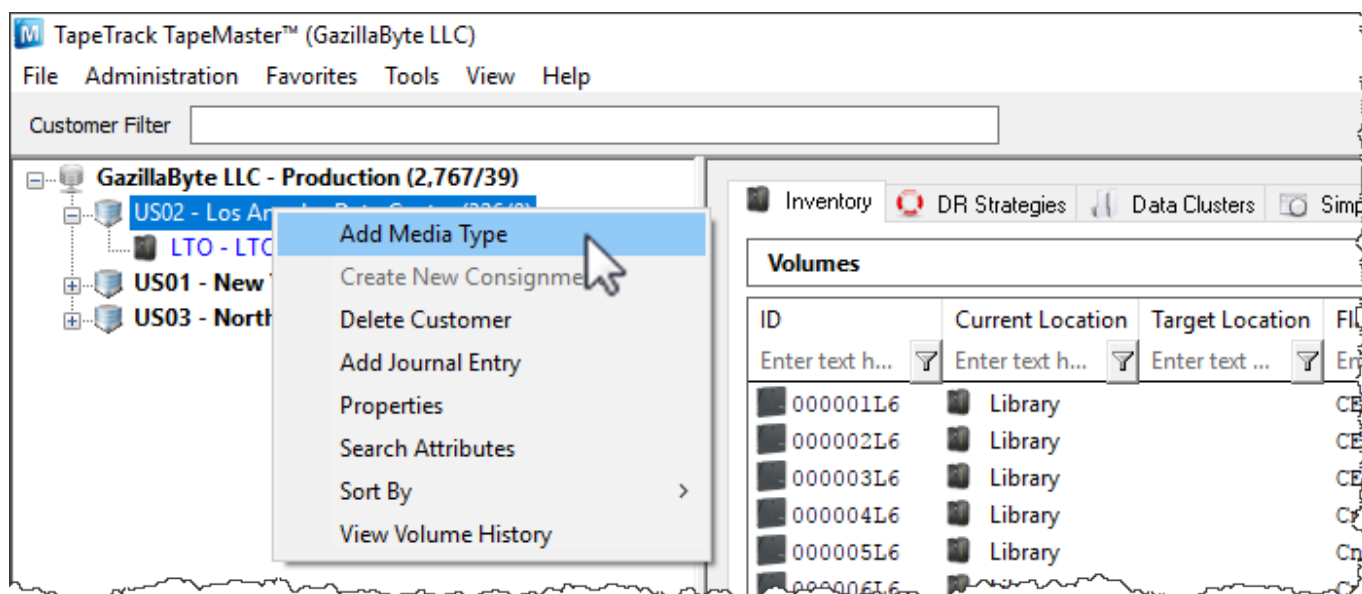


Adding and Maintaining Media Types

Media is usually separated in TapeTrack according to the [Media Type](#) (eg LTO, CD or 359x). [Media Generations](#), such as LTO3 and LTO4, are traditionally grouped together. [Media Types](#) can be [added](#), or [removed](#), as required for each [Customer](#).

Adding Media Types

To add a [Media Type](#), right-click a [Customer](#) and select Add Media Type.



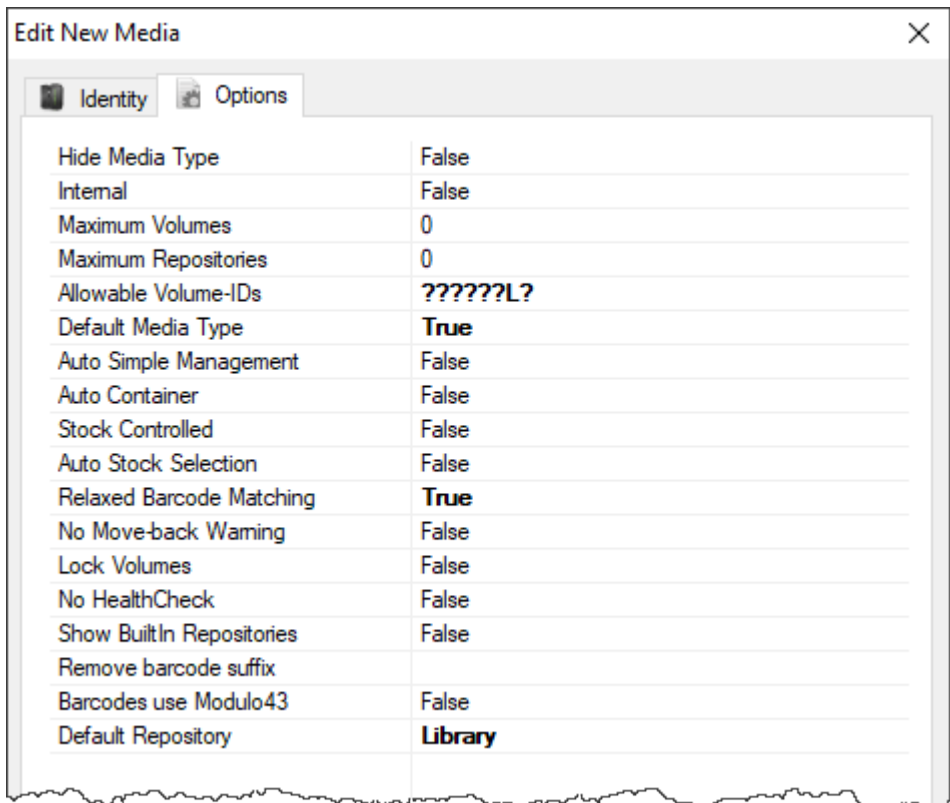
Identity Tab

This will launch a Edit New Media window. The first tab on the Edit New Media window is the Identity tab. The Identity tab requires the input of a [Media-ID](#) (up to four alphanumeric characters) and a [Media Description](#) (up to twenty alphanumeric characters). While the [Media Description](#) can be edited at any time, the [Media-ID](#) is permanent and cannot be changed once created.



Options Tab

The Options tab provides options for the new [Media Type](#).

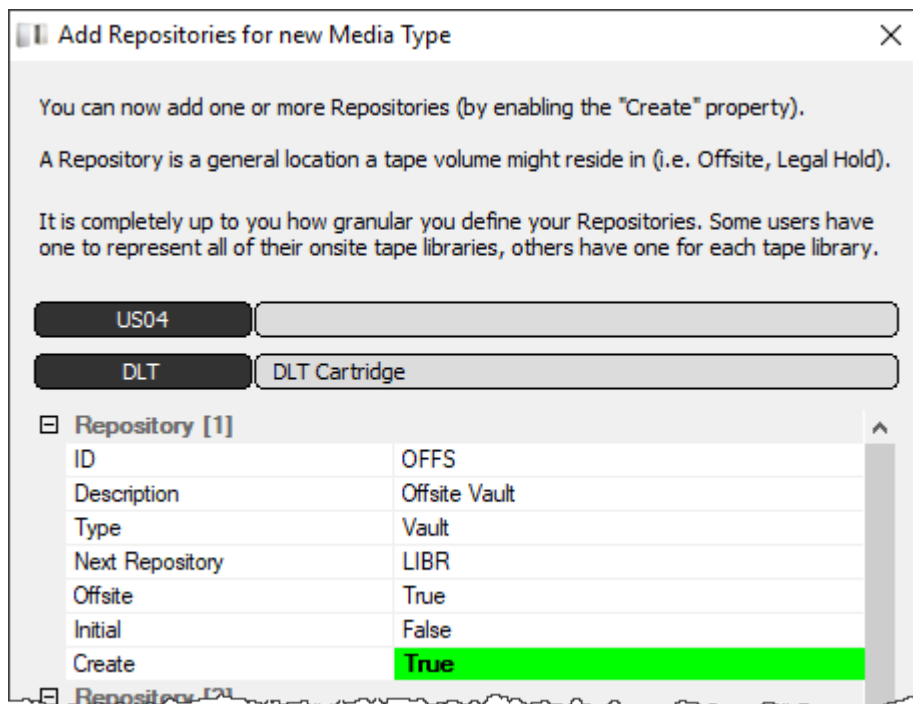


- **Hide Media Type** when set to true removes the [Media](#) Type from view in the Customer Tree.
- **Internal [Media](#) Type** has an internal purpose and should not be displayed to all applications.
- **Maximum Volumes** allowed. 0 = unlimited.
- **Maximum Repositories** allowed. 0 = unlimited.
- **Allowable Volume-ID's** if set, restricts the allowable [Volume-ID](#) formats for this [Customer](#).

- **Default Media Type** This [Media](#) type is the default type when none can be determined.
- **Auto Simple Management** adds new [Volume](#) with the Simple Management Option.
- **Auto Container** automatically adds new [Volumes](#) as Containers.
- **Stock Controlled** requires all new [Volumes](#) to have a Stock Control Type.
- **Auto Stock Selection** selects a Stock Type for new [Volumes](#) automatically.
- **Relaxed Barcode Matching** attempts to match a scanned Barcode with L|T|J suffix when not found.
- **No Move-back Warning** stops a warning flag (W) being added to a [Volume](#) if it moves back to its Current Repository before being confirmed at it's Target Repository.
- **Lock Volumes** stops updates from occurring to [Volume](#) data.
- **No HealthCheck** excludes media from Health Check statistics.
- **Show Built In Repositories** includes built-in Repositories in displayed list.
- **Remove Barcode Suffix** removes suffix from scanned Barcode before processing.
- **Barcodes use Modulo43** will be reviewed for Modulo 43 checksum digits.
- **Default Repository** allocates the default location for new [Volumes](#).

Click Save

The next prompt will be to add the relevant [Repositories](#) for the [Media](#). [Repositories](#) can be added by editing the fields (if required) and changing the Create property to **True**.



Add Repositories for new Media Type

You can now add one or more Repositories (by enabling the "Create" property).

A Repository is a general location a tape volume might reside in (i.e. Offsite, Legal Hold).

It is completely up to you how granular you define your Repositories. Some users have one to represent all of their onsite tape libraries, others have one for each tape library.

US04

DLT DLT Cartridge

Repository [1]	
ID	OFFS
Description	Offsite Vault
Type	Vault
Next Repository	LIBR
Offsite	True
Initial	False
Create	True

You can also [Create Repositories](#) manually at any time new ones are required.

Deleting Media Types

Right-click a [Media Type](#) in the [Customer Tree](#). Select Delete Media Type.



 Media Types that contain [Repositories](#) and/or [Volumes](#) cannot be deleted until dependencies are removed.

Further information about removing [Media Type](#) dependencies can be found at [Deleting Repositories](#) and [Deleting Volumes](#).

Modifying

Right-click a Media Type in the Customer Tree and select Properties.



From the Edit Media window, you can modify the Description, change the [Media Options](#) and add [Volumes](#) using the [Volume-ID Building](#) tab. See the [Volume-ID Building page](#) for more details on how to use this function.

Edit Media: LTO Cartridge (102/22)

Identity Volume-ID Building Options

Index	Sequence	Elements
1	0,1,2,3,4,5,6,7,8,9	10
2	0,1,2,3,4,5,6,7,8,9	10
3	0,1,2,3,4,5,6,7,8,9	10
4	0,1,2,3,4,5,6,7,8,9	10
5	0,1,2,3,4,5,6,7,8,9	10
6	0,1,2,3,4,5,6,7,8,9	10
7	L5	1

List contains 7 records Selected=1 First Selected=7

Index	Item	Defined
<input checked="" type="checkbox"/> 1	000000L5	Yes
<input checked="" type="checkbox"/> 2	000001L5	Yes
<input checked="" type="checkbox"/> 3	000002L5	Yes
<input checked="" type="checkbox"/> 4	000003L5	Yes

From:
<https://rtfm.tapetrack.com/> - **TapeTrack Documentation**

Permanent link:
<https://rtfm.tapetrack.com/master/media?rev=1576189826>

Last update: **2025/01/21 22:07**

