

Adding and Maintaining Media Types

Media is usually separated in TapeTrack according to the [Media Type](#) (eg LTO, CD or 359x). [Media Generations](#), such as LTO3 and LTO4, are traditionally grouped together.

[Media Types](#) can be [added](#), or [removed](#), as required for each [Customer](#).

Adding Media Types

To add a [Media Type](#), right-click a [Customer](#) and select Add Media Type.



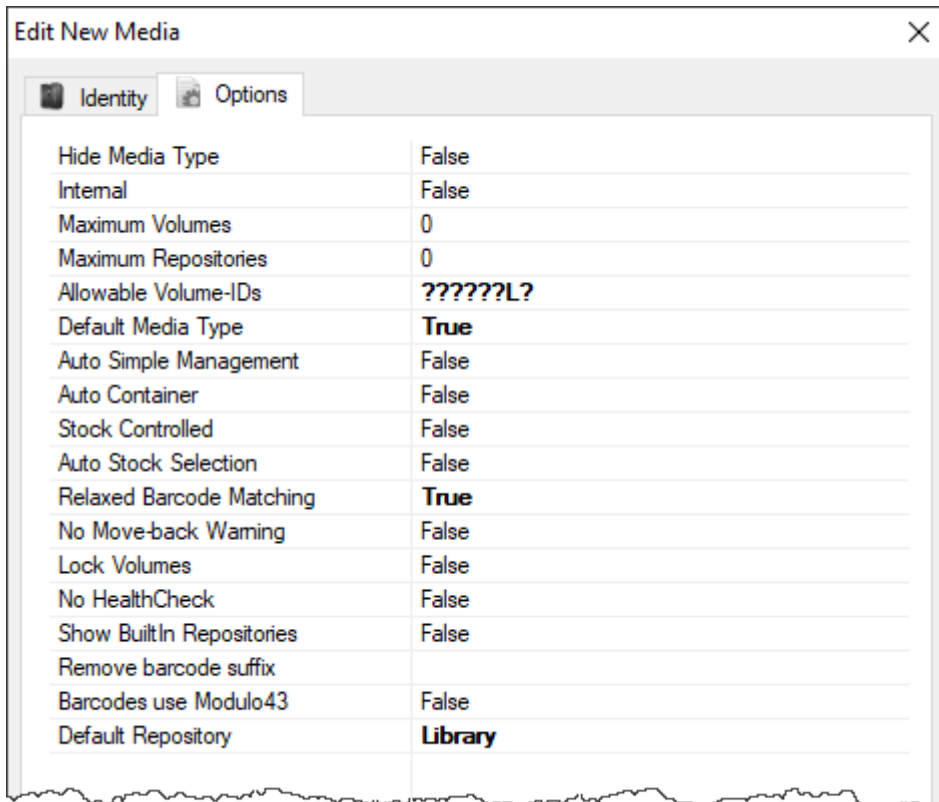
Identity Tab

This will launch a Edit New Media window. The first tab on the Edit New Media window is the Identity tab. The Identity tab requires the input of a [Media-ID](#) (up to four alphanumeric characters) and a [Media Description](#) (up to twenty alphanumeric characters). While the [Media Description](#) can be edited at any time, the [Media-ID](#) is permanent and cannot be changed once created.



Options Tab

The Options tab provides options for the new [Media Type](#).

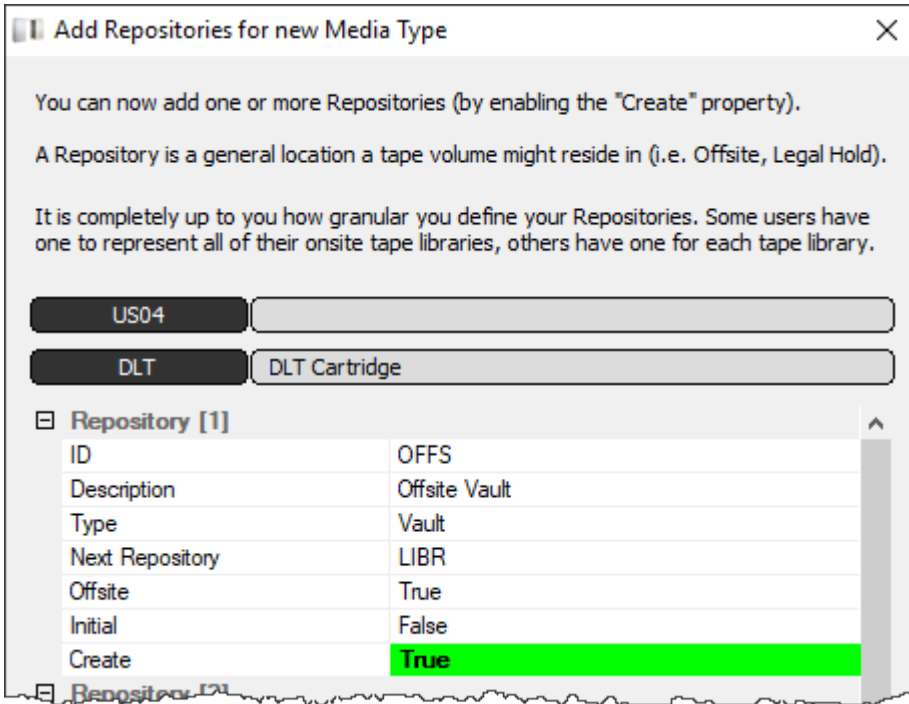


Property	Value
Hide Media Type	False
Internal	False
Maximum Volumes	0
Maximum Repositories	0
Allowable Volume-IDs	?????L?
Default Media Type	True
Auto Simple Management	False
Auto Container	False
Stock Controlled	False
Auto Stock Selection	False
Relaxed Barcode Matching	True
No Move-back Warning	False
Lock Volumes	False
No HealthCheck	False
Show BuiltIn Repositories	False
Remove barcode suffix	
Barcodes use Modulo43	False
Default Repository	Library

- **Hide Media Type** when set to True removes the [Media Type](#) from view in the [Customer Tree](#).
- **Internal** Media Type has an internal purpose and should not be displayed to all applications.
- **Maximum Volumes** allowed. 0 = unlimited.
- **Maximum Repositories** allowed. 0 = unlimited.
- **Allowable Volume-ID's** if set, restricts the allowable [Volume-ID](#) formats for this [Customer](#).
- **Default Media Type** This [Media Type](#) is the default type when none can be determined.
- **Auto Simple Management** adds new [Volume](#) with the Simple Management Option.
- **Auto Container** automatically adds new [Volumes](#) as Containers.
- **Stock Controlled** requires all new [Volumes](#) to have a [Stock Control Type](#).
- **Auto Stock Selection** selects a [Stock Type](#) for new [Volumes](#) automatically.
- **Relaxed Barcode Matching** attempts to match a scanned Barcode with L|T|J suffix when not found.
- **No Move-back Warning** stops a [Warning Flag \(W\)](#) being added to a [Volume](#) if it moves back to its Current Repository before being confirmed at it's Target Repository.
- **Lock Volumes** stops updates from occurring to [Volumes](#) data.
- **No HealthCheck** excludes [Media](#) from [Health Check Statistics](#).
- **Show Built In Repositories** includes built-in Repositories in displayed list.
- **Remove Barcode Suffix** removes suffix from scanned Barcode before processing.
- **Barcodes use Modulo43** will be reviewed for Modulo 43 checksum digits.
- **Default Repository** allocates the default location for new [Volumes](#).

Click Save

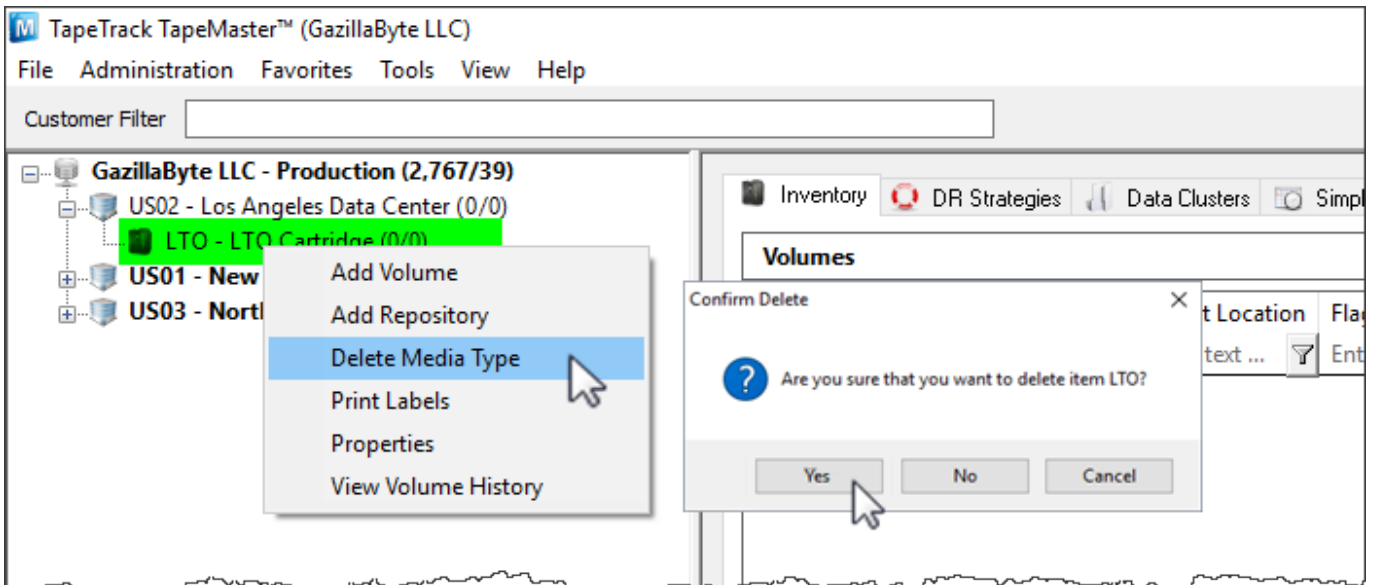
The next prompt will be to add the relevant [Repositories](#) for the [Media](#). [Repositories](#) can be added by editing the fields (if required) and changing the Create property to True.



You can also [Create Repositories](#) manually at any time new ones are required.

Deleting Media Types

Right-click a [Media Type](#) in the [Customer Tree](#). Select Delete Media Type.

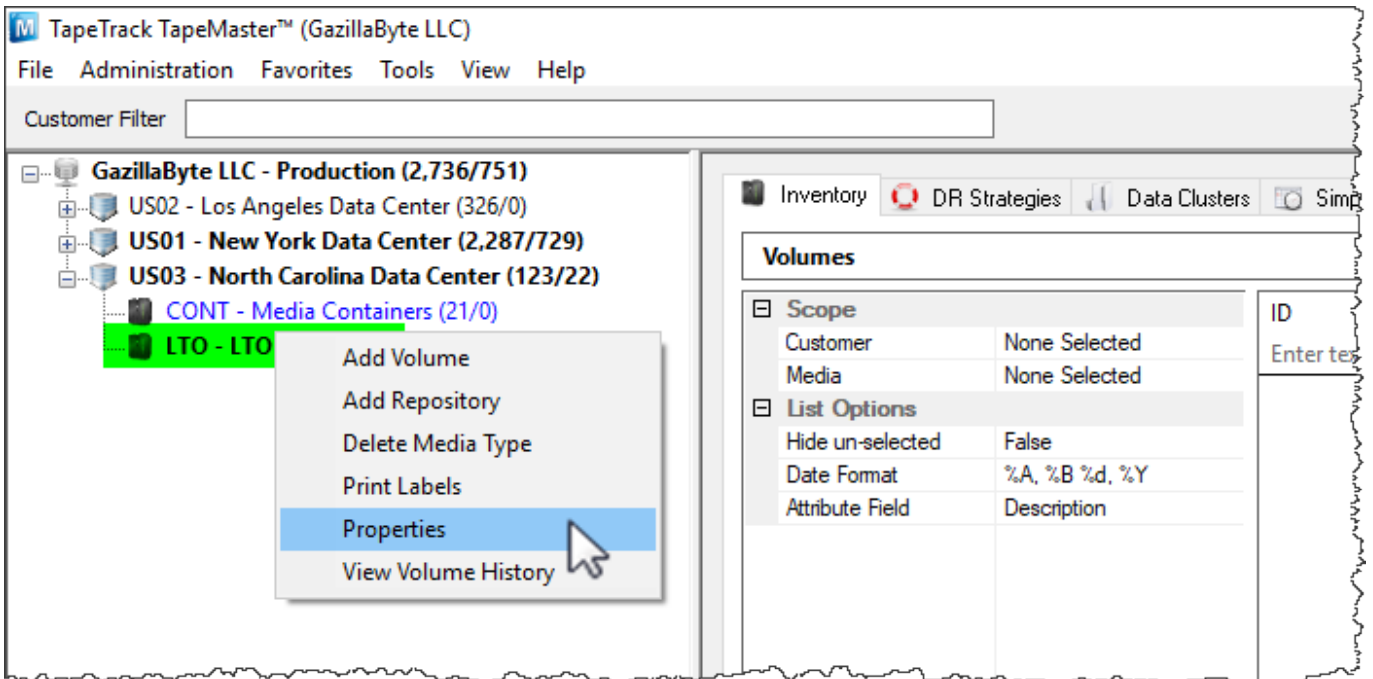


 **Media** Types that contain [Repositories](#) and/or [Volumes](#) cannot be deleted until dependencies are removed.

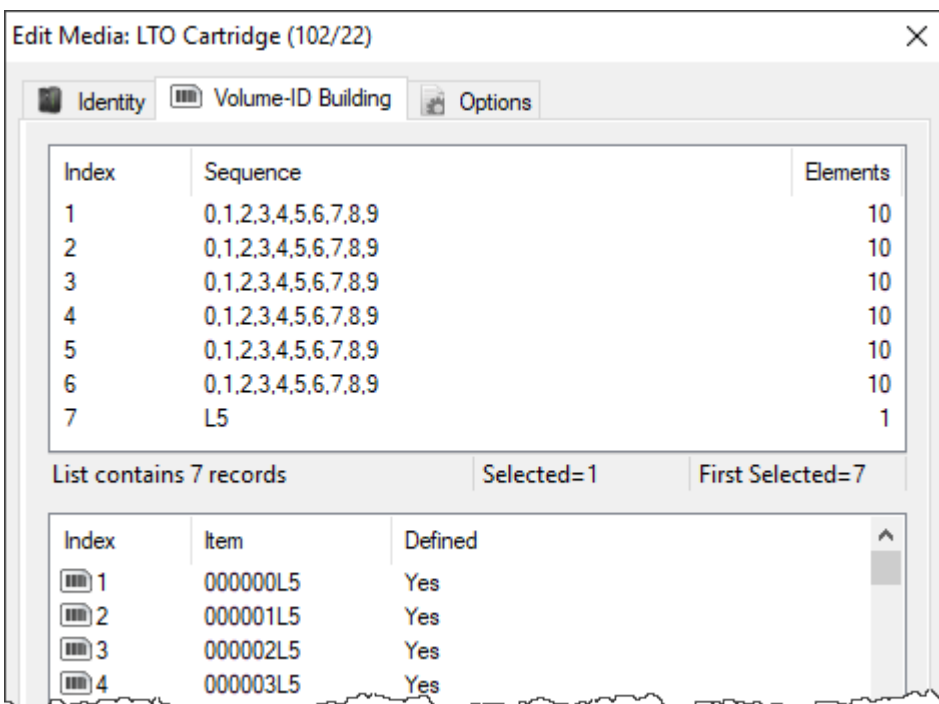
Further information about removing [Media Type](#) dependencies can be found at [Deleting Repositories](#) and [Deleting Volumes](#).

Modifying

Right-click a [Media Type](#) in the [Customer Tree](#) and select [Properties](#).



From the [Edit Media](#) window, you can modify the [Description](#), change the [Media Options](#) and add [Volumes](#) using the [Volume-ID Building](#) tab. See the [Volume-ID Building](#) page for more details on how to use this function.



From:

<https://rtfm.tapetrack.com/> - **TapeTrack Documentation**

Permanent link:

<https://rtfm.tapetrack.com/master/media?rev=1625791333>

Last update: **2025/01/21 22:07**

