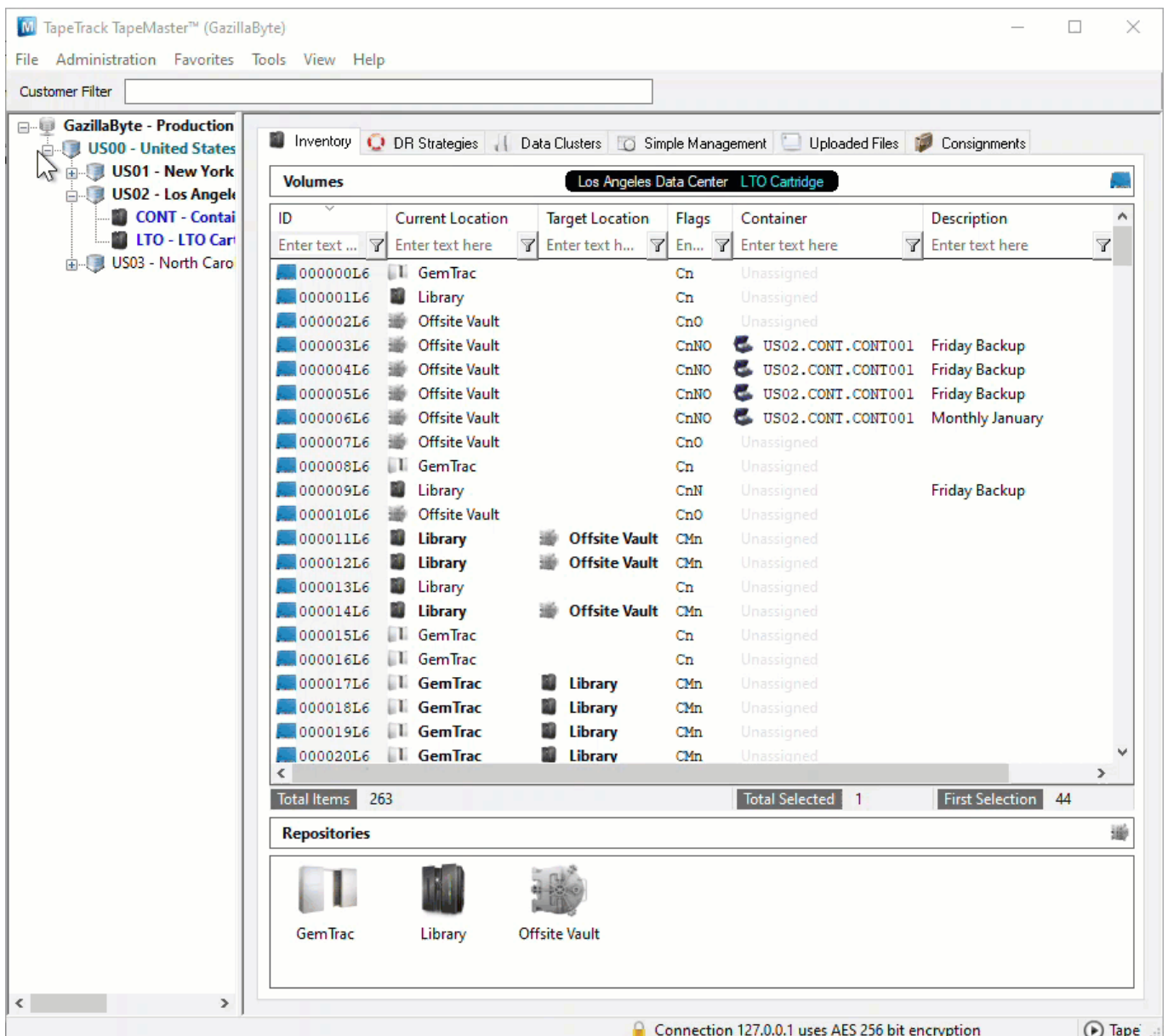


Remove Volumes From Container

Remove Volumes Via The Volume Media Inventory Window

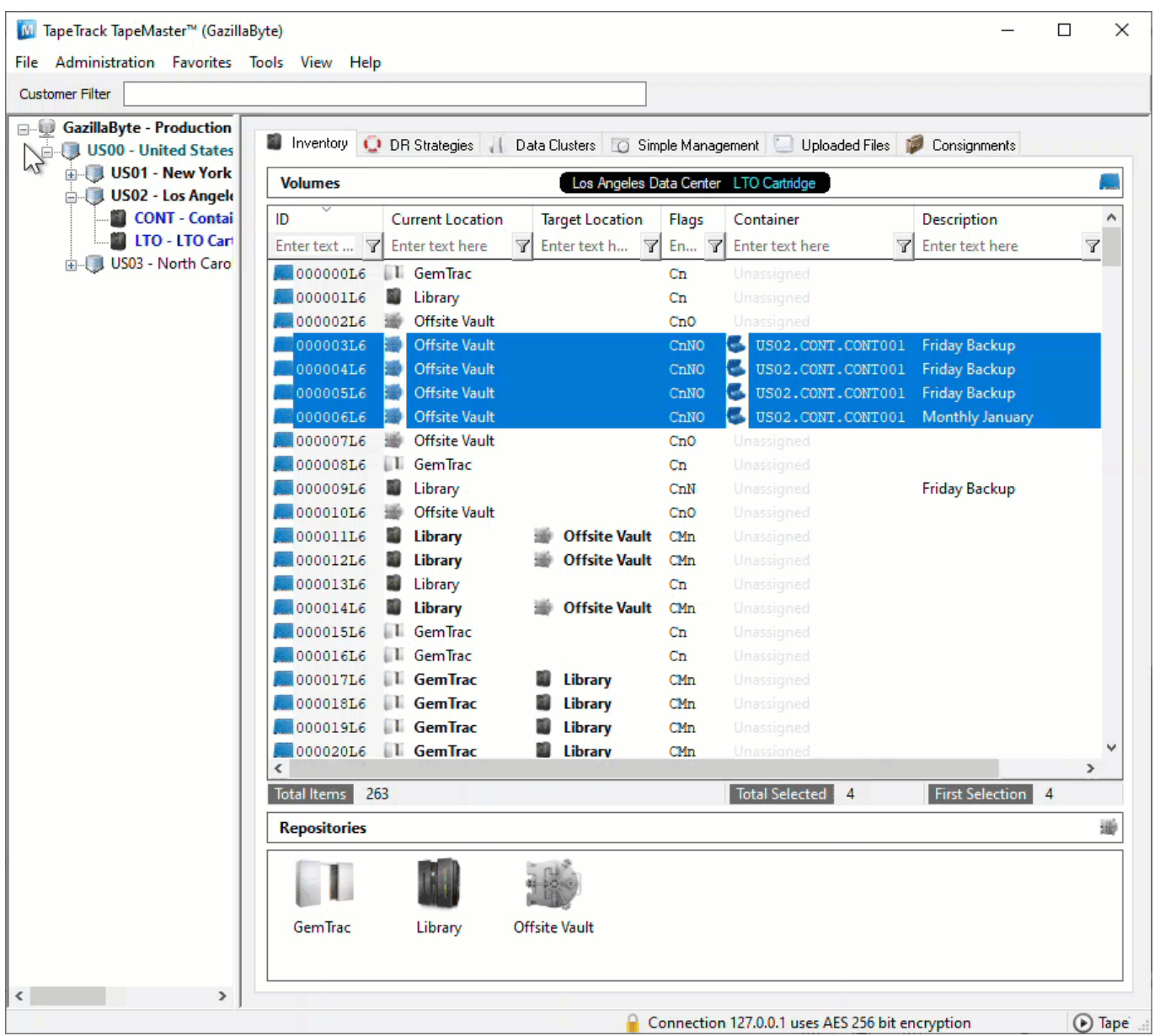
Select a **Volume** or range of **Volumes** (Shift+Click and or Ctrl+Click) from the Inventory window to remove from Container/s. **Volumes** assigned to different Containers can be selected and removed at the same time, there is no need to handle one Container at a time.



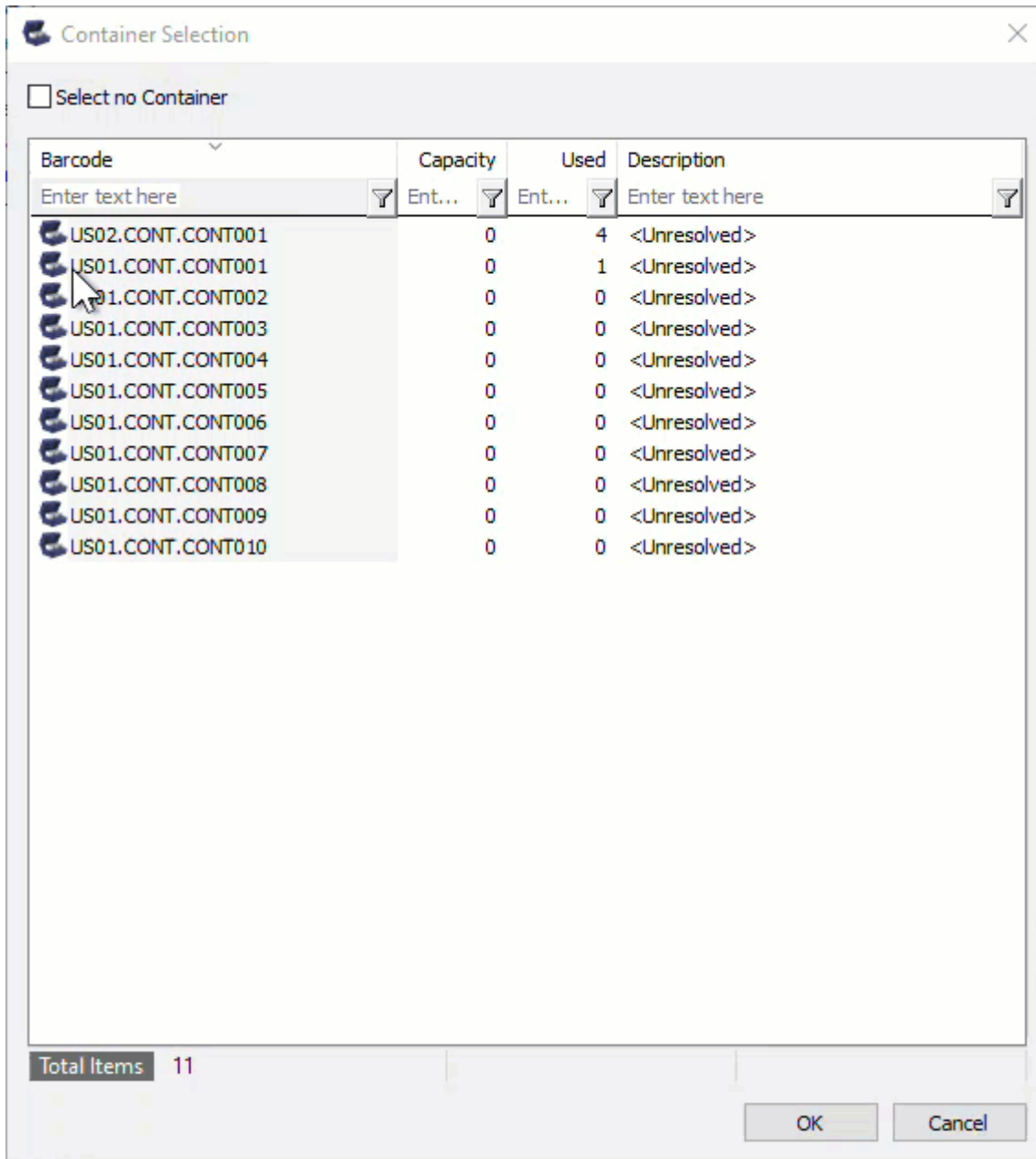
The screenshot shows the TapeTrack TapeMaster™ (GazillaByte) interface. The main window is titled 'Volumes' and is set to 'Los Angeles Data Center' and 'LTO Cartridge'. The interface includes a menu bar (File, Administration, Favorites, Tools, View, Help) and a 'Customer Filter' field. On the left, a tree view shows the hierarchy: GazillaByte - Production > US00 - United States > US01 - New York > US02 - Los Angeles > CONT - Contain > LTO - LTO Cartridge > US03 - North Carolina. The main area displays a table of volumes with the following columns: ID, Current Location, Target Location, Flags, Container, and Description. The table contains 20 rows of data, with the first row (ID: 000000L6) highlighted. Below the table, there are summary statistics: Total Items: 263, Total Selected: 1, and First Selection: 44. At the bottom, the 'Repositories' section shows three options: GemTrac, Library, and Offsite Vault, each with a corresponding icon.

| ID | Current Location | Target Location | Flags | Container | Description |
|----------|------------------|-----------------|-------|-------------------|-----------------|
| 000000L6 | GemTrac | | Cn | Unassigned | |
| 000001L6 | Library | | Cn | Unassigned | |
| 000002L6 | Offsite Vault | | Cn0 | Unassigned | |
| 000003L6 | Offsite Vault | | CnNO | US02.CONT.CONT001 | Friday Backup |
| 000004L6 | Offsite Vault | | CnNO | US02.CONT.CONT001 | Friday Backup |
| 000005L6 | Offsite Vault | | CnNO | US02.CONT.CONT001 | Friday Backup |
| 000006L6 | Offsite Vault | | CnNO | US02.CONT.CONT001 | Monthly January |
| 000007L6 | Offsite Vault | | Cn0 | Unassigned | |
| 000008L6 | GemTrac | | Cn | Unassigned | |
| 000009L6 | Library | | CnN | Unassigned | Friday Backup |
| 000010L6 | Offsite Vault | | Cn0 | Unassigned | |
| 000011L6 | Library | Offsite Vault | CMn | Unassigned | |
| 000012L6 | Library | Offsite Vault | CMn | Unassigned | |
| 000013L6 | Library | | Cn | Unassigned | |
| 000014L6 | Library | Offsite Vault | CMn | Unassigned | |
| 000015L6 | GemTrac | | Cn | Unassigned | |
| 000016L6 | GemTrac | | Cn | Unassigned | |
| 000017L6 | GemTrac | Library | CMn | Unassigned | |
| 000018L6 | GemTrac | Library | CMn | Unassigned | |
| 000019L6 | GemTrac | Library | CMn | Unassigned | |
| 000020L6 | GemTrac | Library | CMn | Unassigned | |

Right click on the highlighted **Volumes** and select Special Operations > Modify > Assign to new/no Container

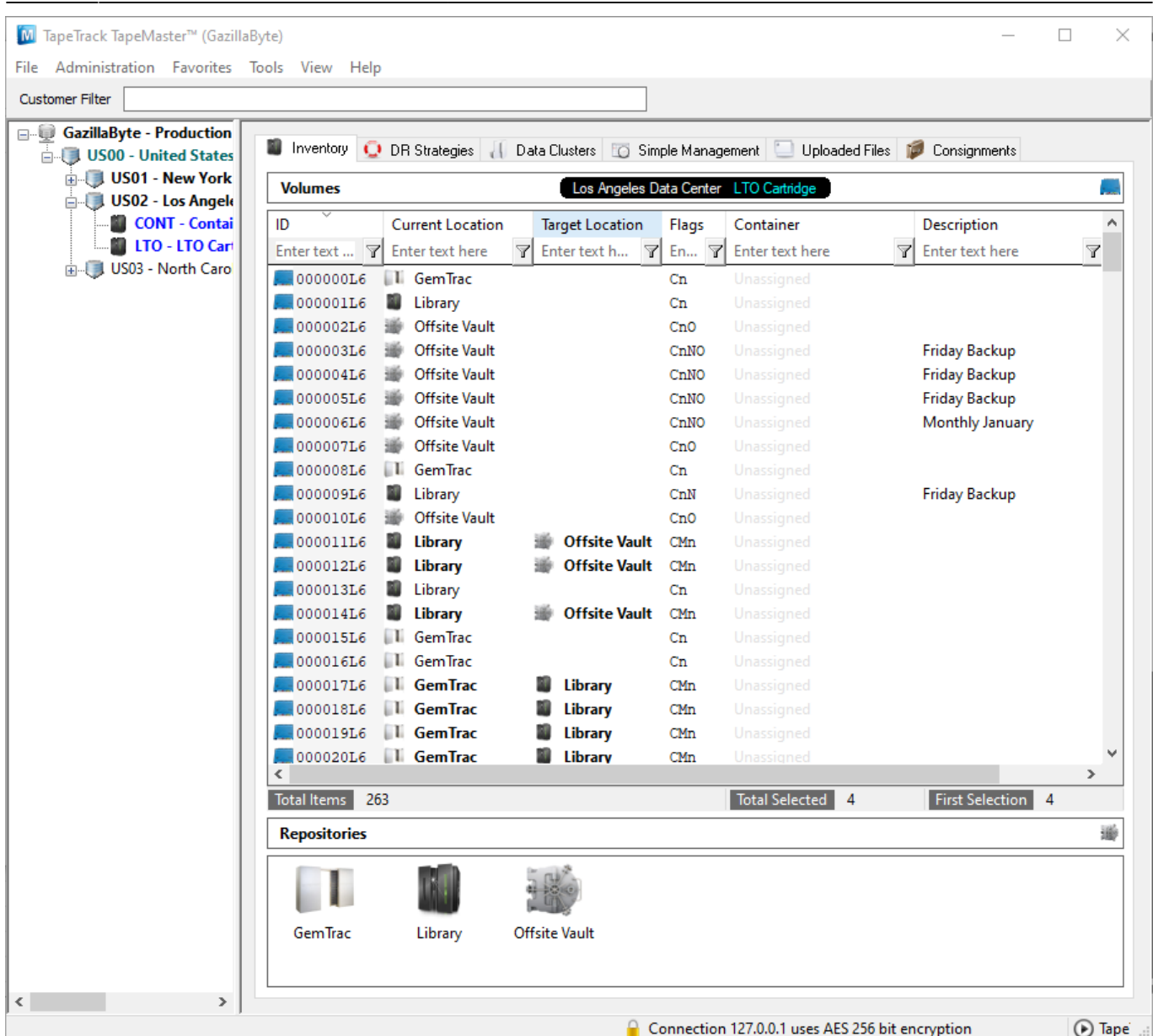


From the **Container Selection** window check the **Select No Container** checkbox at the top left. This will remove the displayed Containers.



Click OK to remove the [Volumes](#) from the assigned Containers and exit back to the inventory window.

TapeMaster will now display the [Volumes](#) with no assigned Containers.

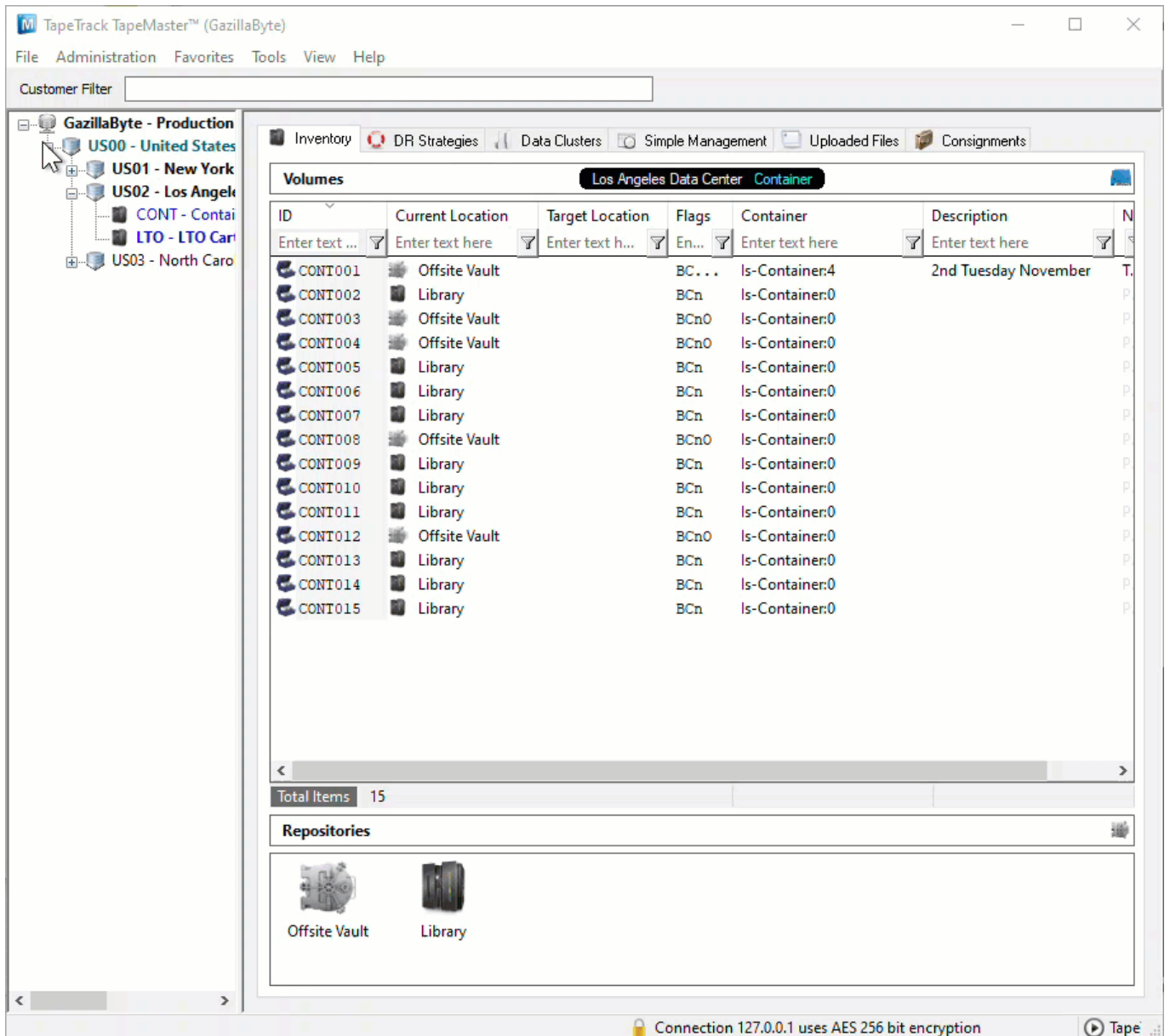


Remove Volumes Via The Container Media Inventory Window

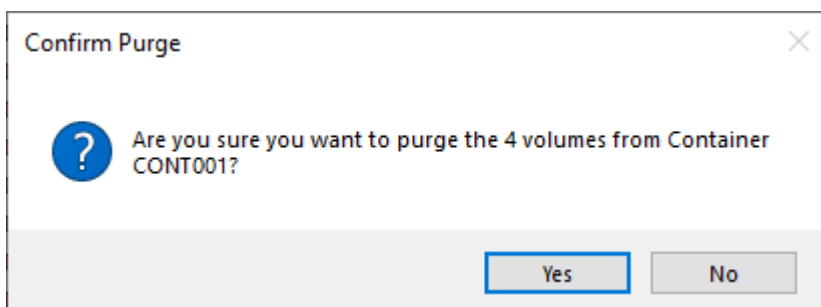
Purge Container Contents

Right click on the Container you want to remove the [Volumes](#) from and select Special operations > Container > Purge.

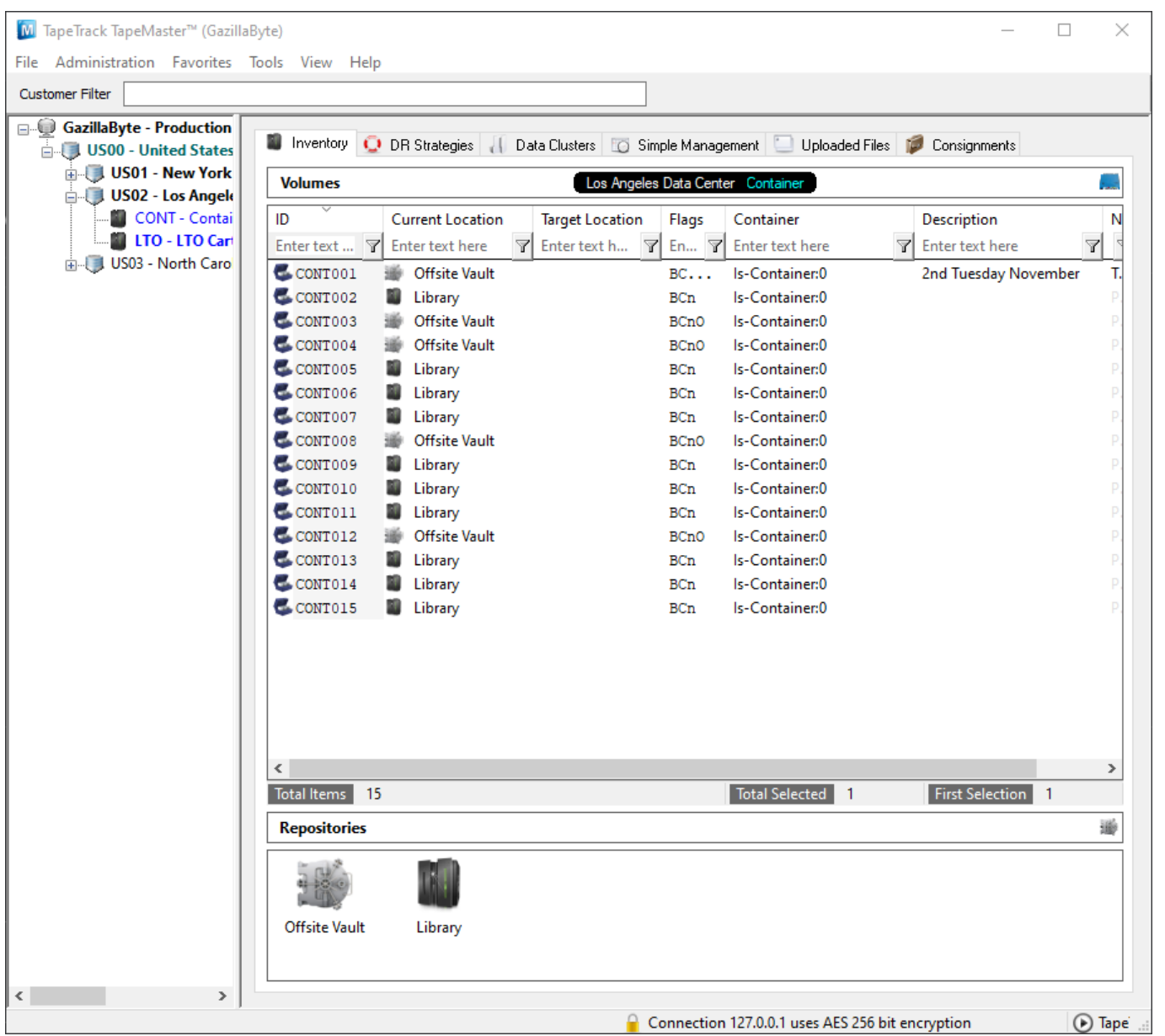
Multiple Containers can be purged together by selecting them, using Shift+Click or Ctrl+Click, before right clicking and selecting Special operations > Container > Purge.



Then click Yes to **Confirm purge** popup.

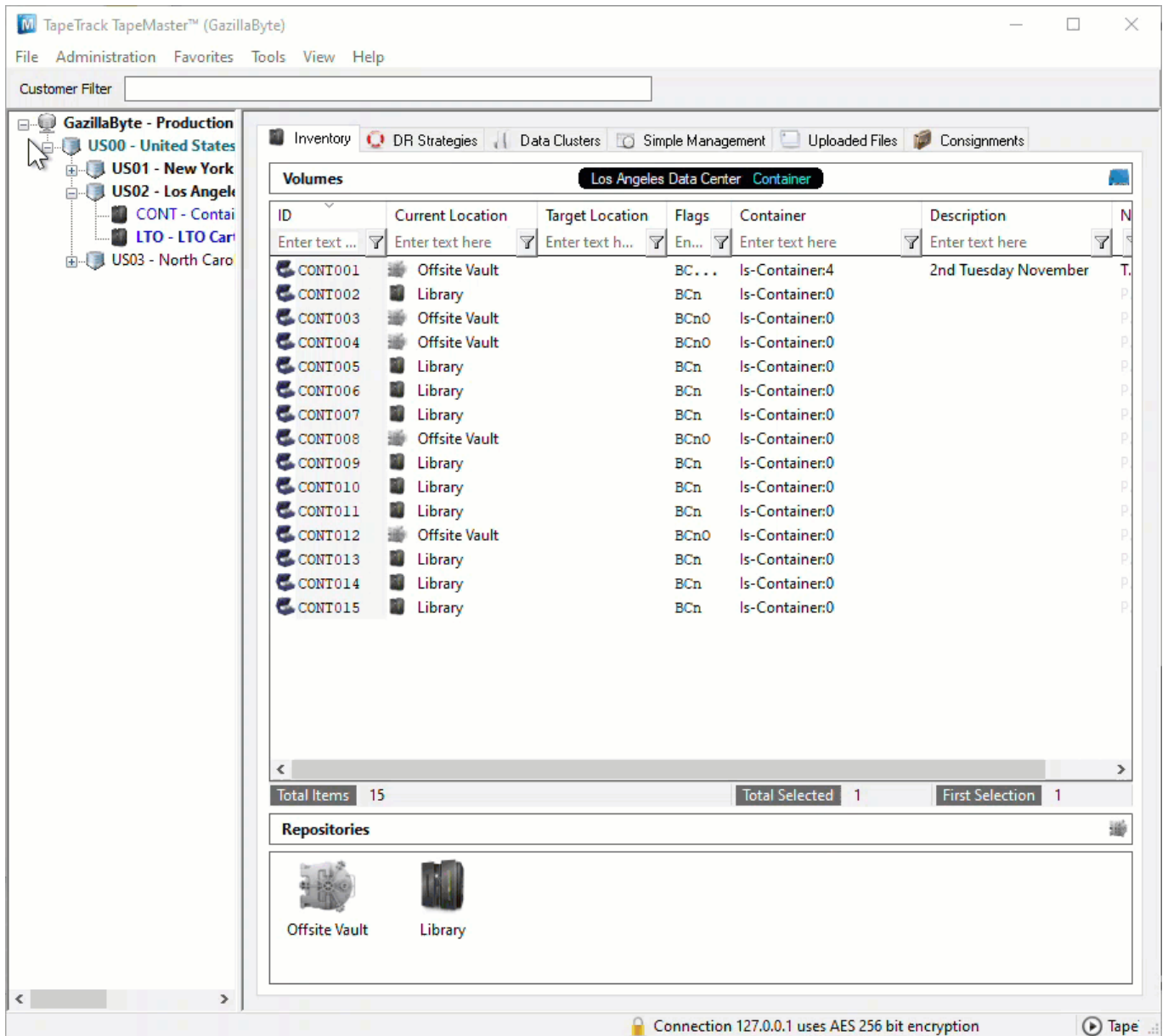


TapeMaster will now display the remaining Container contents, in this example as 0 as all **Volumes** were removed.

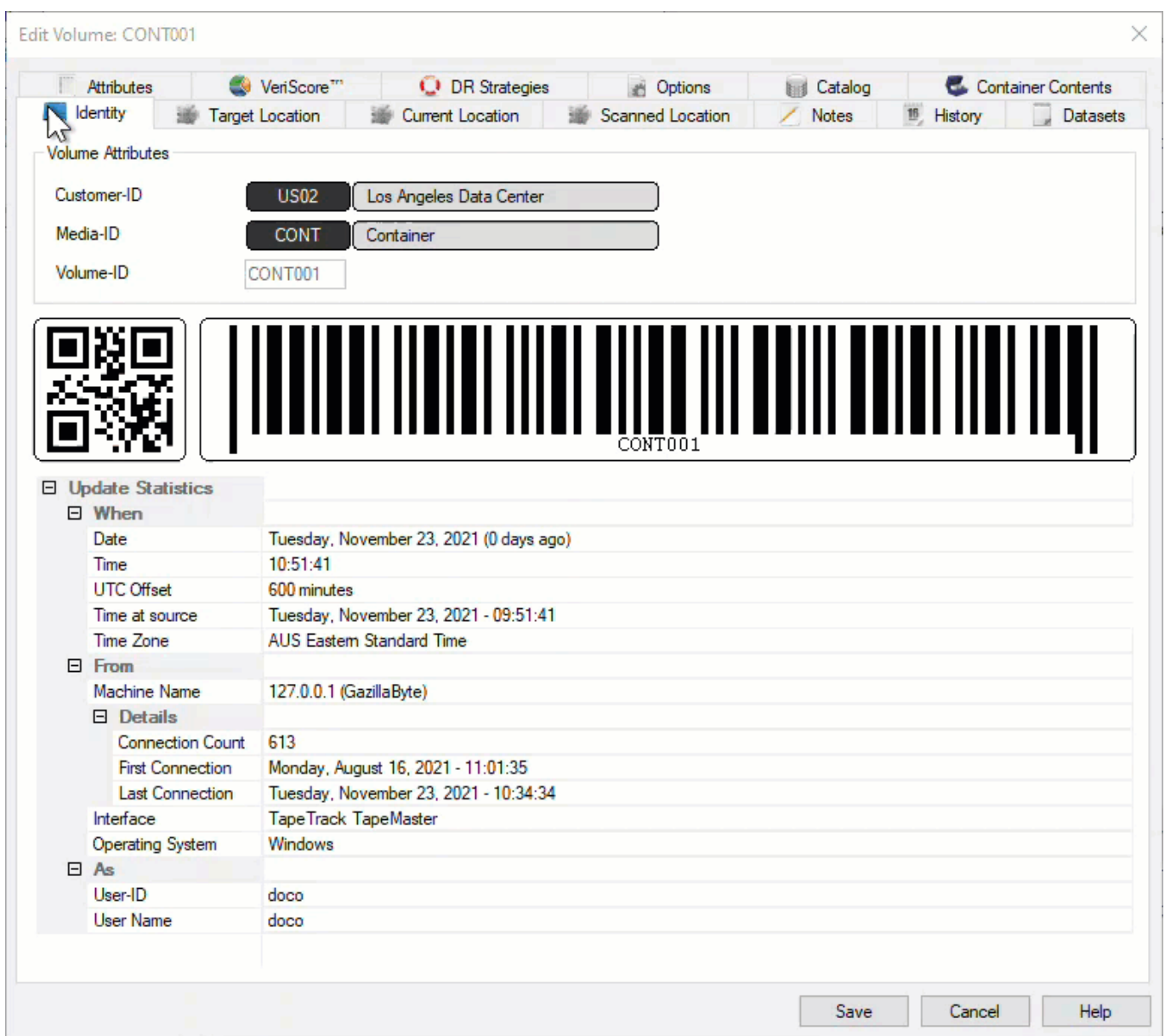


Remove Volumes Via The Container Properties Contents Tab

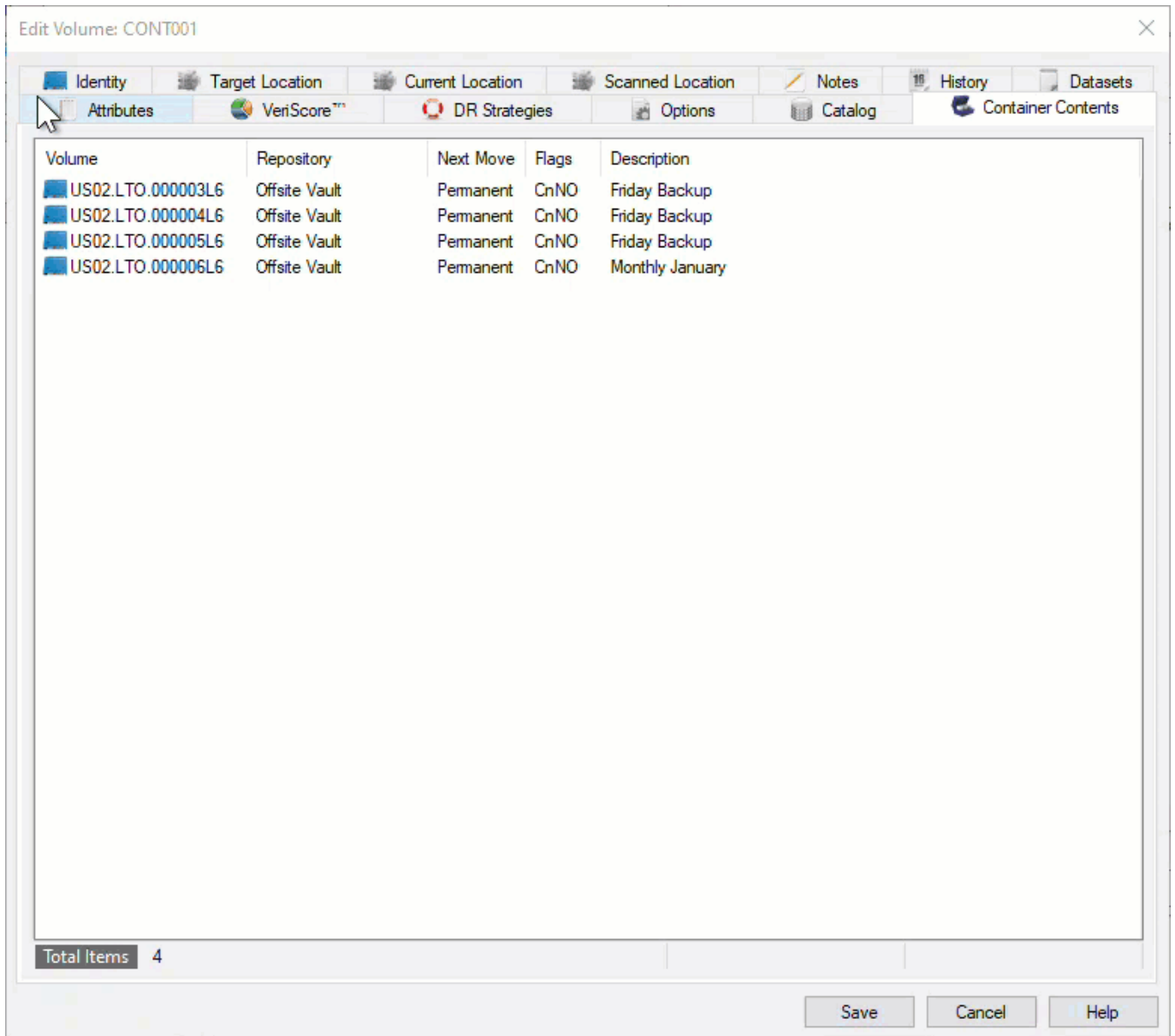
Right click and select Properties, or double click, the required container.



Select the Container Contents tab.



Select the required **Volumes** from the displayed list, right-click highlighted **Volumes** and click Remove From Container and Save to close window.



TapeMaster will now display the remaining Container contents, in this example as 0 as all **Volumes** were removed.

Last update: 2025/01/21 22:07 master:remove_volume_container_inventory https://rtfm.tapetrack.com/master/remove_volume_container_inventory?rev=1653357744

The screenshot shows the TapeTrack TapeMaster interface. On the left is a navigation tree for 'GazillaByte - Production' with sub-items: 'US00 - United States', 'US01 - New York', 'US02 - Los Angeles', 'CONT - Container', 'LTO - LTO Cartridge', and 'US03 - North Carolina'. The main window displays the 'Volumes' section for the 'Los Angeles Data Center Container'. A table lists 15 volumes with columns for ID, Current Location, Target Location, Flags, Container, and Description. The first row shows 'CONT001' at 'Offsite Vault' with a description '2nd Tuesday November'. Below the table, a summary bar shows 'Total Items: 15', 'Total Selected: 1', and 'First Selection: 1'. At the bottom, a 'Repositories' section shows icons for 'Offsite Vault' and 'Library'. A status bar at the very bottom indicates 'Connection 127.0.0.1 uses AES 256 bit encryption'.

| ID | Current Location | Target Location | Flags | Container | Description |
|---------|------------------|-----------------|-------|----------------|----------------------|
| CONT001 | Offsite Vault | | BC... | Is-Container:0 | 2nd Tuesday November |
| CONT002 | Library | | BCn | Is-Container:0 | |
| CONT003 | Offsite Vault | | BCn0 | Is-Container:0 | |
| CONT004 | Offsite Vault | | BCn0 | Is-Container:0 | |
| CONT005 | Library | | BCn | Is-Container:0 | |
| CONT006 | Library | | BCn | Is-Container:0 | |
| CONT007 | Library | | BCn | Is-Container:0 | |
| CONT008 | Offsite Vault | | BCn0 | Is-Container:0 | |
| CONT009 | Library | | BCn | Is-Container:0 | |
| CONT010 | Library | | BCn | Is-Container:0 | |
| CONT011 | Library | | BCn | Is-Container:0 | |
| CONT012 | Offsite Vault | | BCn0 | Is-Container:0 | |
| CONT013 | Library | | BCn | Is-Container:0 | |
| CONT014 | Library | | BCn | Is-Container:0 | |
| CONT015 | Library | | BCn | Is-Container:0 | |

From: <https://rtfm.tapetrack.com/> - **TapeTrack Documentation**

Permanent link: https://rtfm.tapetrack.com/master/remove_volume_container_inventory?rev=1653357744

Last update: **2025/01/21 22:07**

