

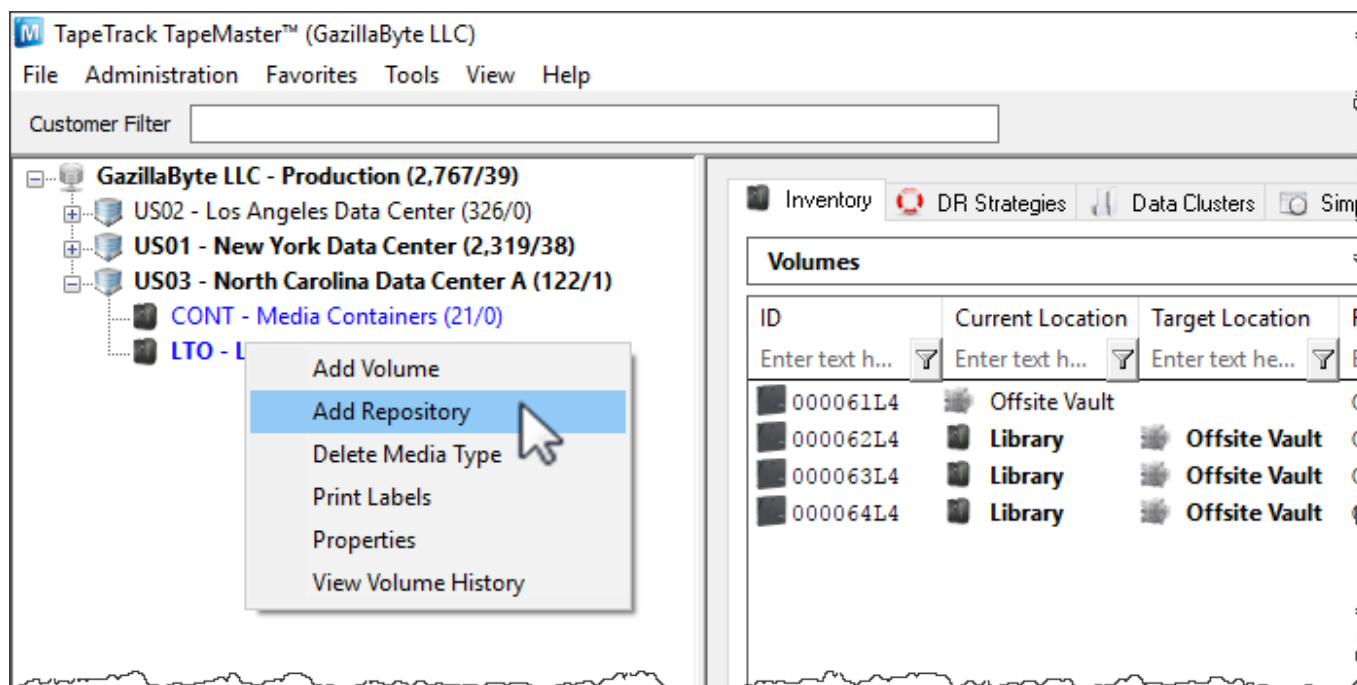
# Adding and Deleting Repositories

## Overview

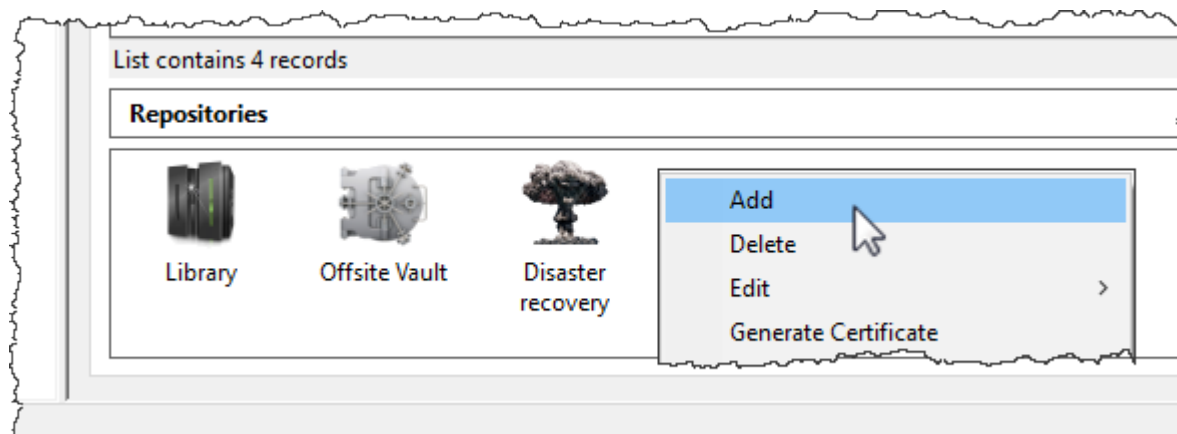
Repositories are locations where Volumes can be located. This page contains information about Adding and Deleting Repositories.

## Adding a Repository

To add a Repository, right-click on the Media Type that the Repository will be listed under and select Add Repository.



or right click in the repository window and select Add.

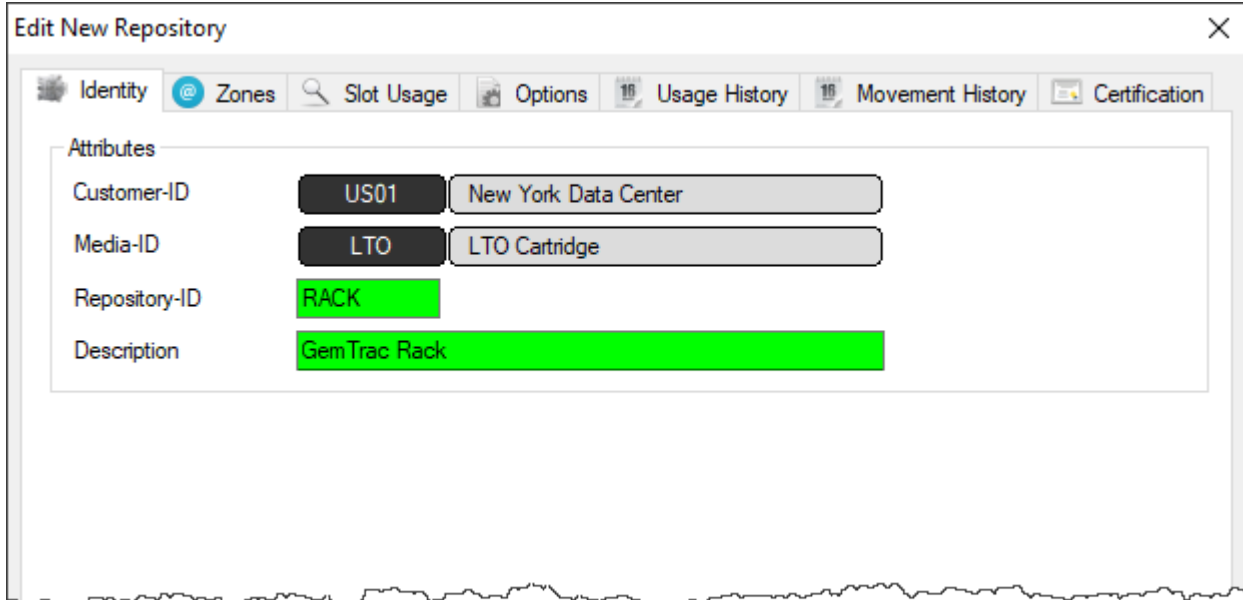


This will launch Edit New Repository window.

## Repository Options

Identity tab

Insert the Repository ID (up to 4 permanent alphanumeric characters) and repository description (up to 20 alphanumeric characters)



## Deleting a Repository

To delete a Repository, right-click on the Repository that needs to be deleted and select Delete.

**Note:** There must not be any Volumes in this Repository in order to delete it.

From:  
<https://rtfm.tapetrack.com/> - **TapeTrack Documentation**

Permanent link:  
<https://rtfm.tapetrack.com/master/repository?rev=1500302175>

Last update: **2025/01/21 22:07**

