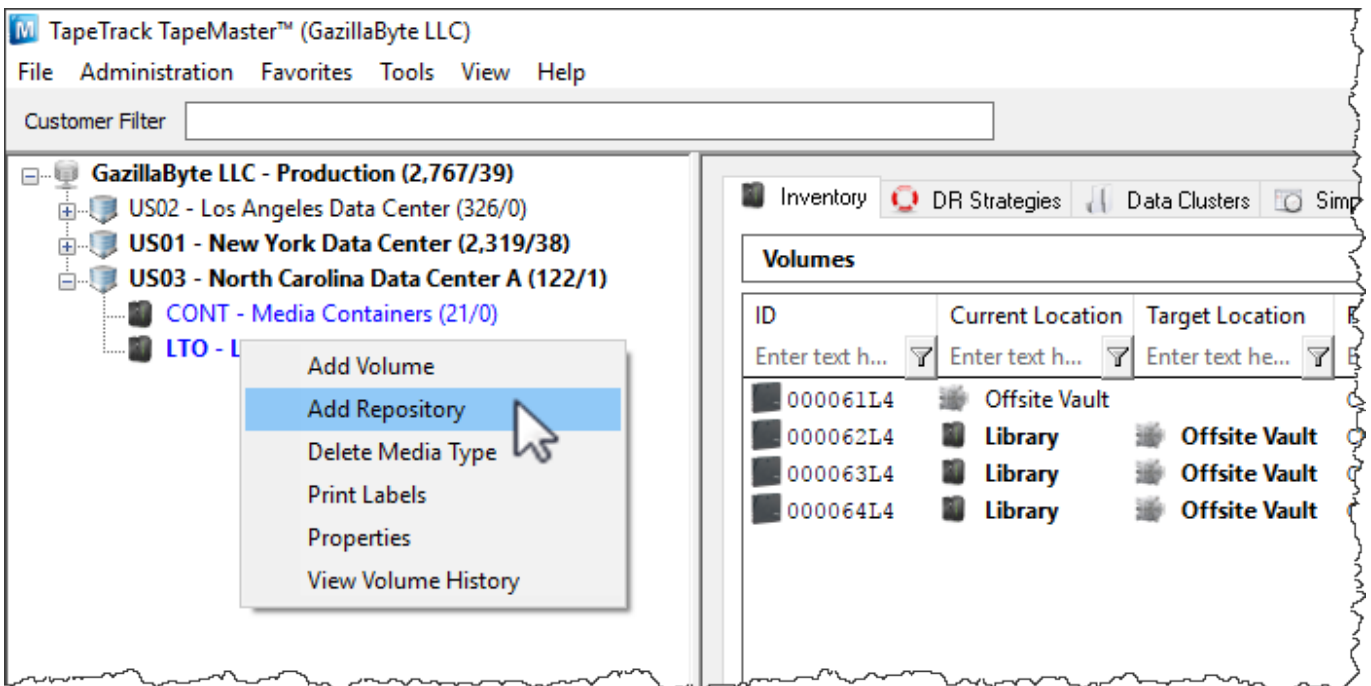


Adding and Maintaining Repositories

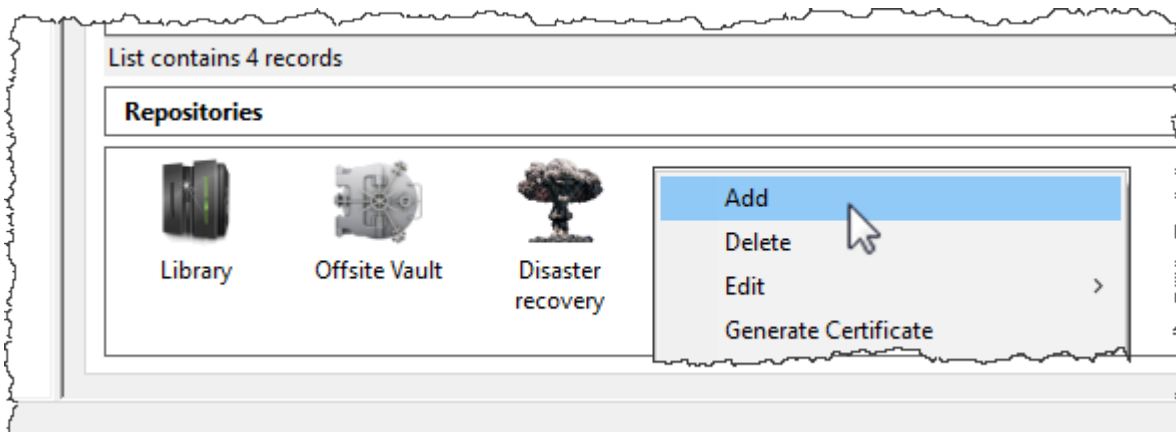
Repositories are locations where Volumes can be located. This page contains information about Adding and Deleting Repositories.

Adding Repositories

To add a Repository, right-click on the Media Type that the Repository will be listed under and select Add Repository.



Or right-click in the repository window and select Add.

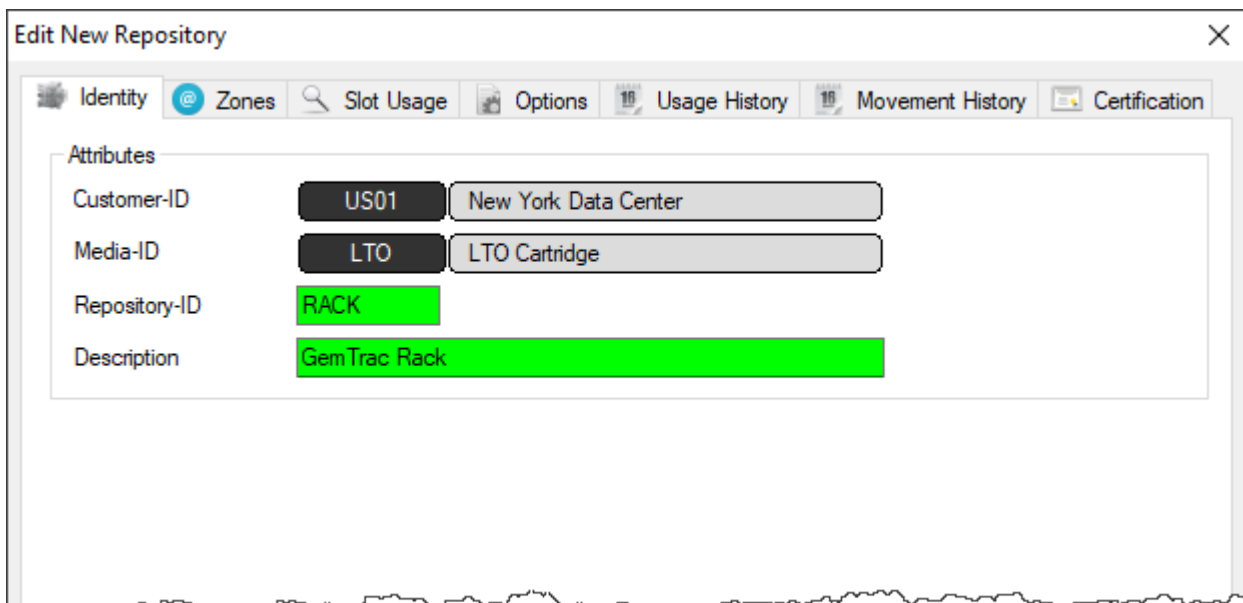


This will launch Edit New Repository window.

Basic Repository Options

Identity

Insert the Repository ID (up to 4 permanent alphanumeric characters) and repository description (up to 20 alphanumeric characters)



Options

Select type of repository to change display icon to match repository function. The basic choices are:

- Destruction
- Disaster Recovery
- Legal Hold
- Library
- Ordered
- Rack
- Scratch
- Transport
- Vault

Select the repository the volume will move to next (required for all automated tape movement) after this repository.

Click Save to create repository.


Advanced Repository Options

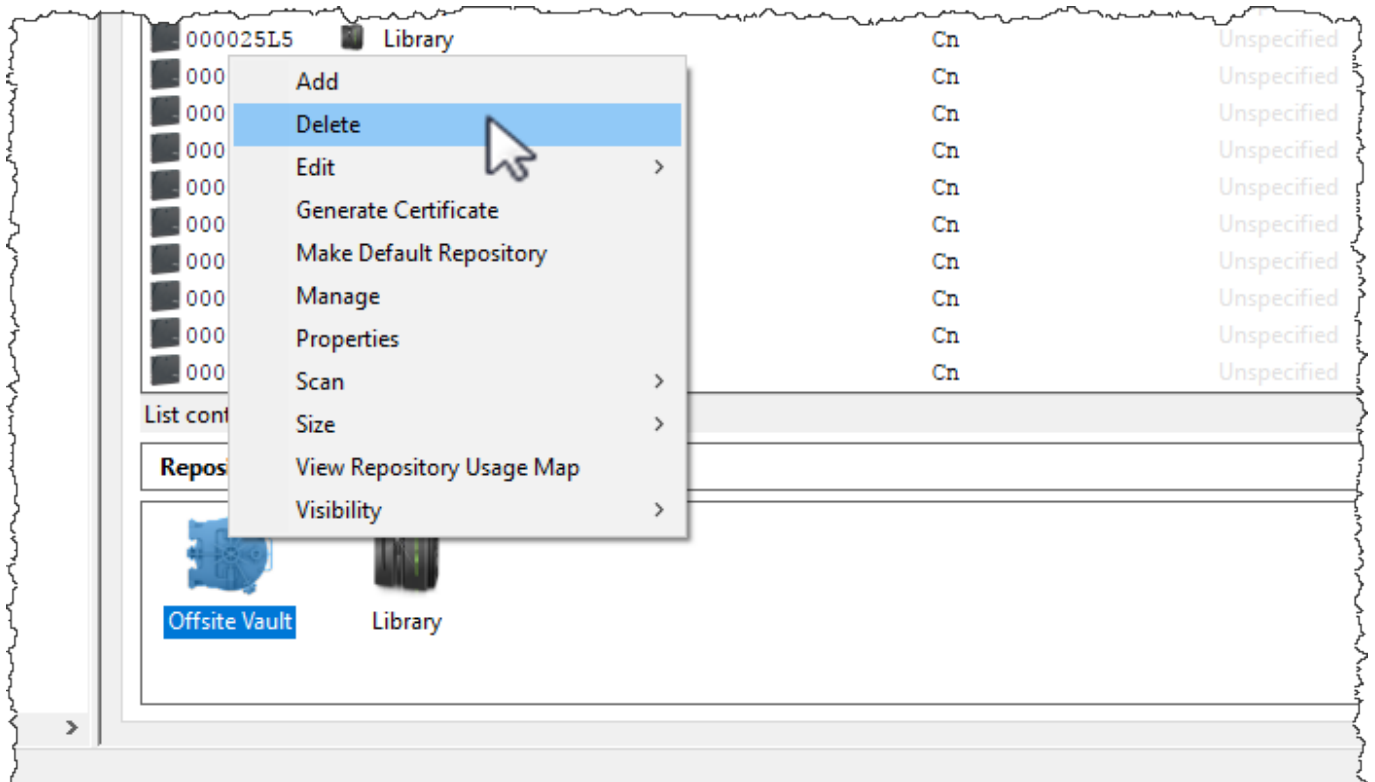
- [Zones](#)
- [Slot Usage](#)
- [Options](#)
- [Usage History](#)
- [Movement History](#)

Certification

Deleting a Repository

To delete a Repository, right-click on the Repository that needs to be deleted and select DeLeTe.

 There must not be any Volumes in this Repository in order to delete it.



From: <https://rtfm.tapetrack.com/> - TapeTrack Documentation

Permanent link: <https://rtfm.tapetrack.com/master/repository?rev=1510345544>

Last update: 2025/01/21 22:07

