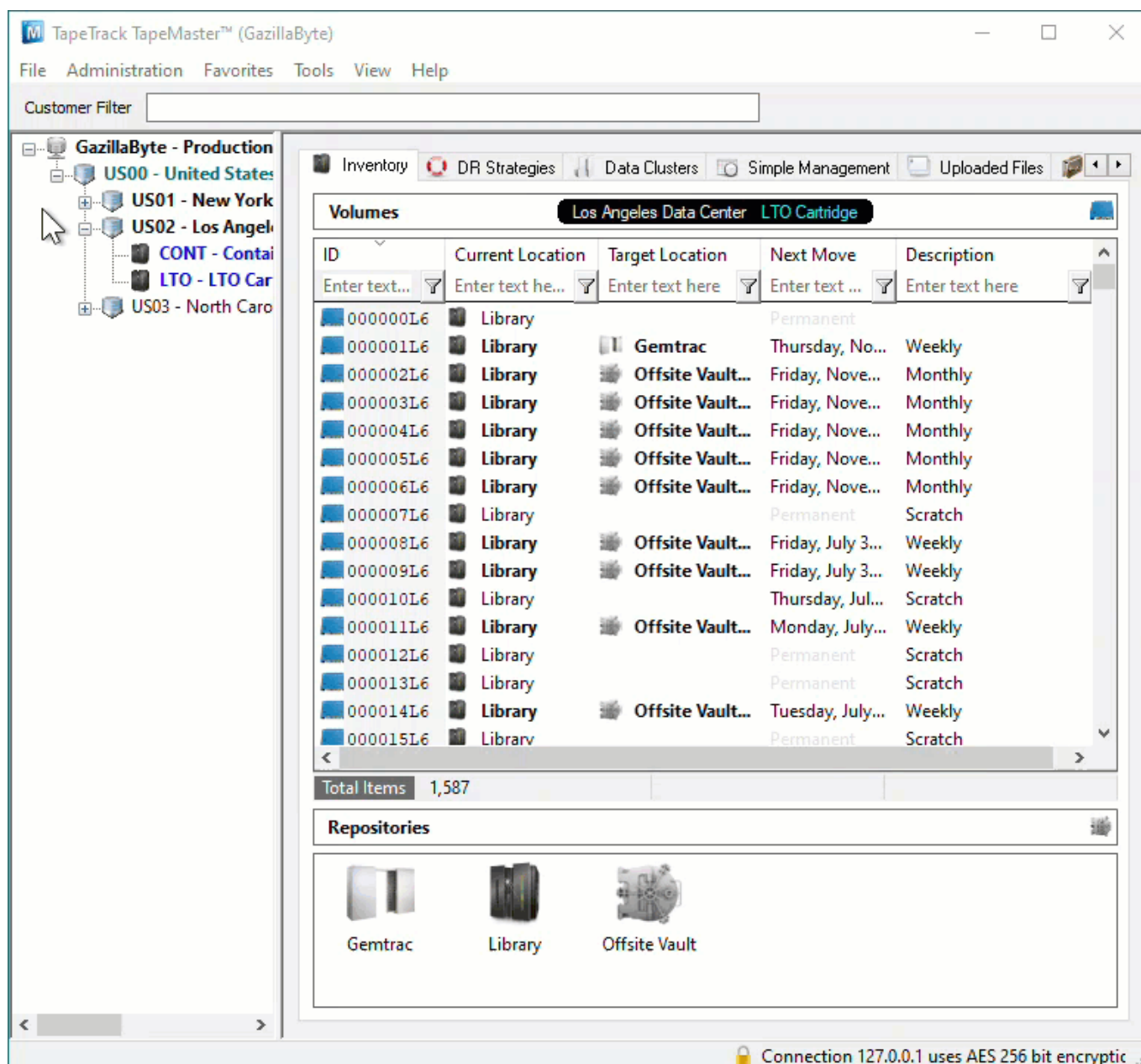


Adding and Maintaining Repositories

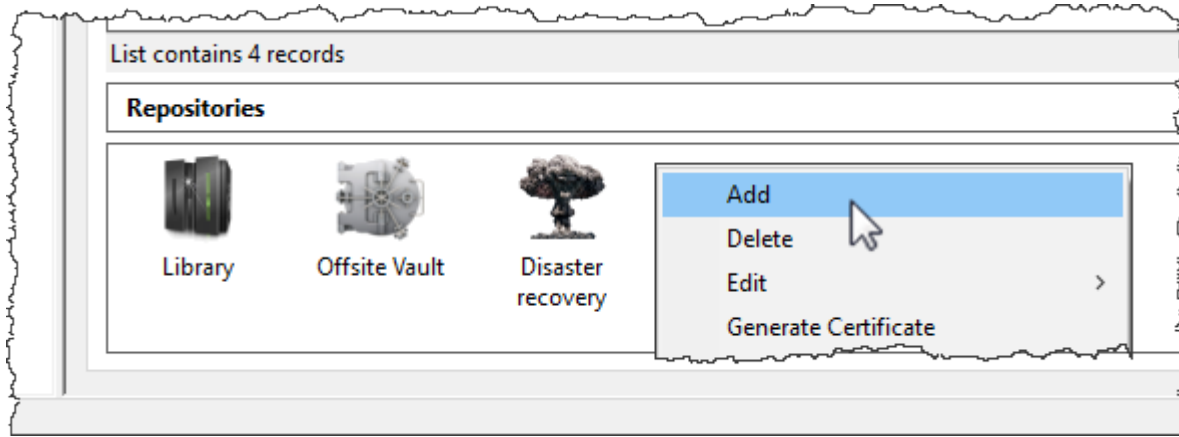
[Repositories](#) are locations where [Volumes](#) can be located. This page contains information about Adding and Deleting [Repositories](#).

Adding Repositories

To add a [Repository](#), right-click on the [Media Type](#) that the [Repository](#) will be listed under and select Add Repository.



Or right-click in the Repository window and select Add.

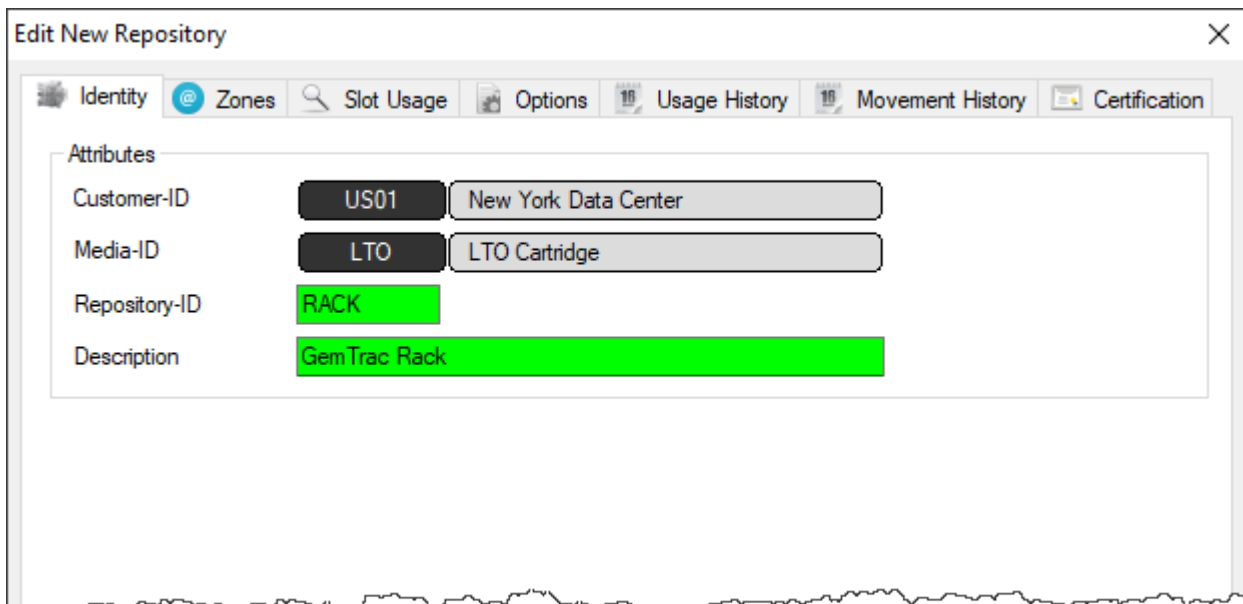


This will launch Edit New Repository window.

Basic Repository Options

Identity



Insert the [Repository-ID](#) (up to 4 permanent alphanumeric characters) and [Repository Description](#) (up to 20 alphanumeric characters)



Options

Select type of [Repository](#) to change display icon to match repository function. The options are:

- Destruction
- Disaster Recovery
- Legal Hold
- Library
- Ordered
- Rack
- Scratch

-  Transport
-  Vault

Select the [Repository](#) the [Volume](#) will move to next (required for all automated tape movement) after this [Repository](#).


Click Save to create [Repository](#).

Advanced Repository Options

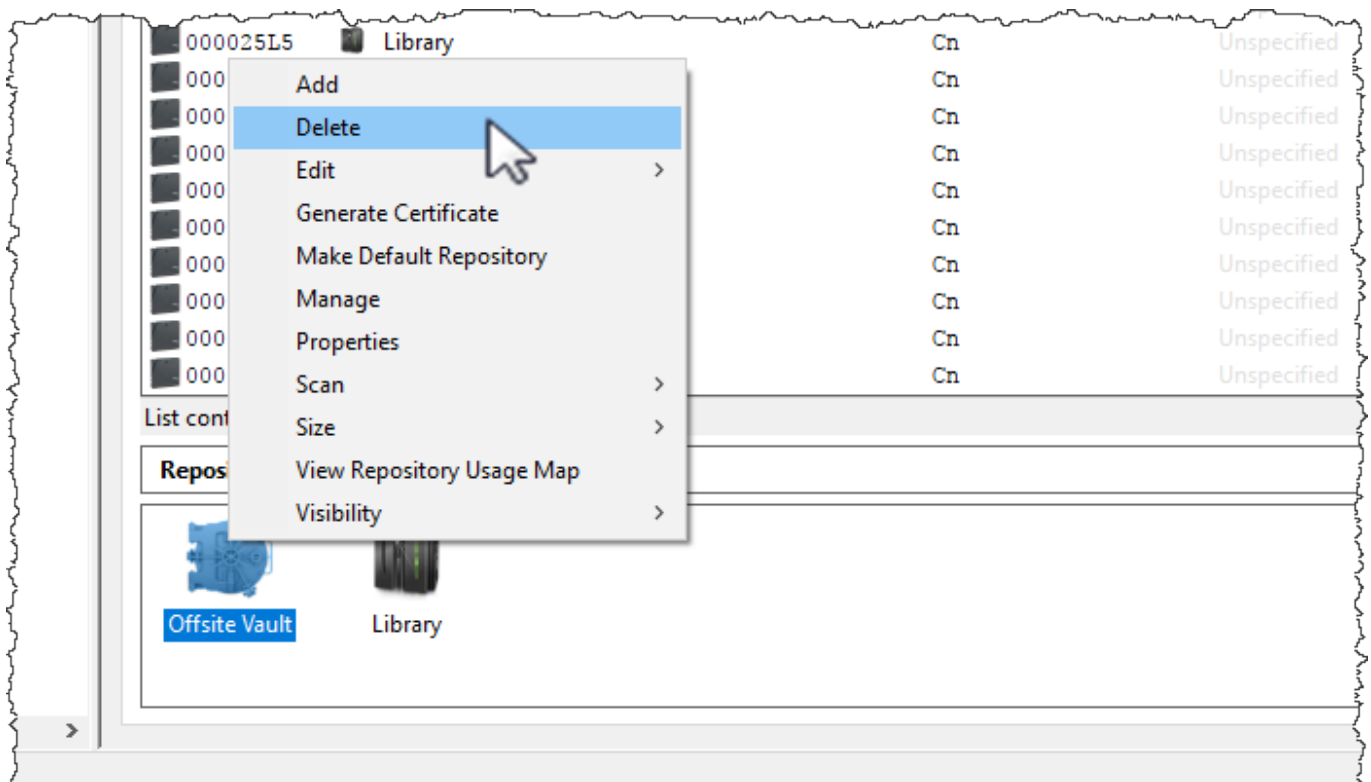
- [Zones](#)
- [Slot Usage](#)
- [Options](#)
- [Usage History](#)
- [Movement History](#)
- [Certification](#)

Deleting a Repository

To delete a [Repository](#), right-click on the [Repository](#) that needs to be deleted and select Delete.

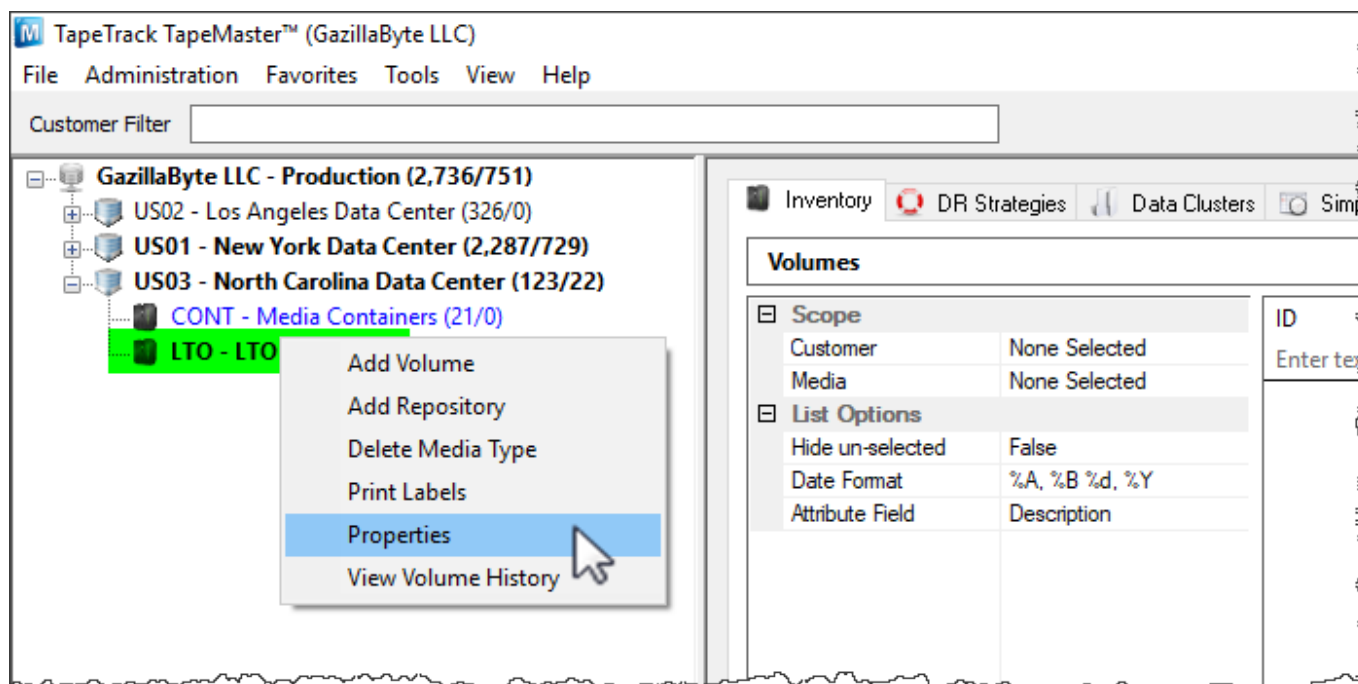
 There must not be any [Volumes](#) in this [Repository](#) in order to delete it.

Any [Volumes](#) in a move to the [Repository](#) will be placed in a move to the Initial [Repository](#).

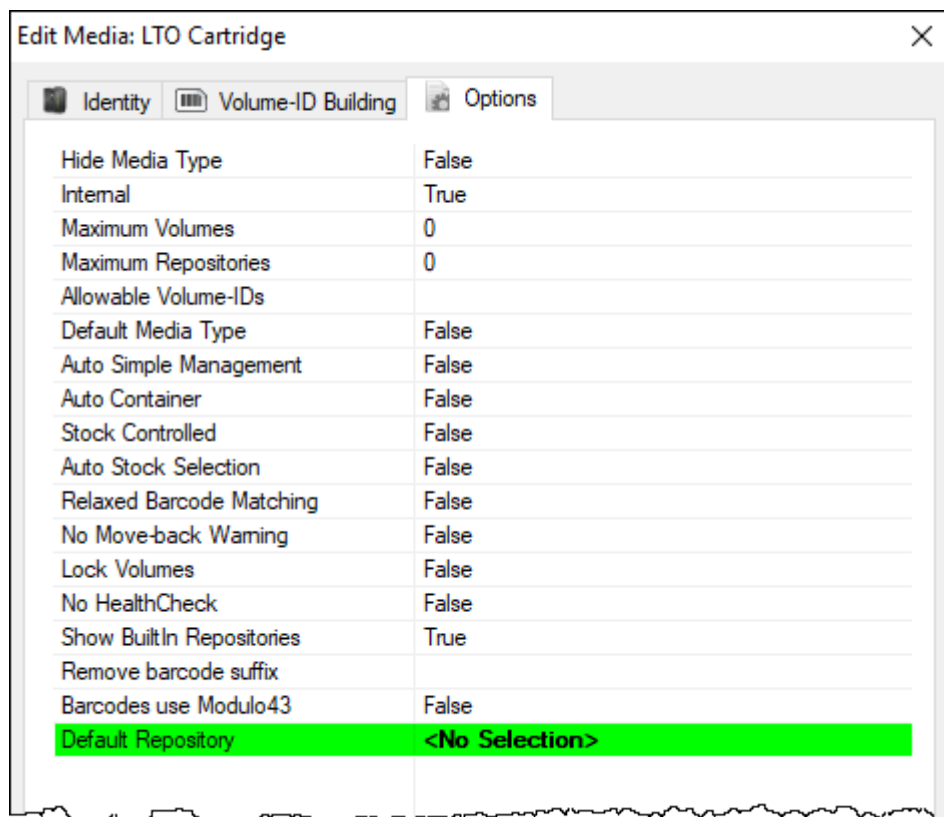


Any **Repository** set as the default (where **Volumes** are added to when a Target **Repository** is not specified) cannot be deleted until the dependency is removed.

To remove the default setting, right-click the **Media Type** in the **Customer Tree** and select **Properties**.



On the Optionstab, change the setting **Default Repository** to <No Selection> and click Save.



The **Repository** may now be deleted by right-clicking and selecting **Delete** and OK to warning dialog.

From:

<https://rtfm.tapetrack.com/> - **TapeTrack Documentation**

Permanent link:

<https://rtfm.tapetrack.com/master/repository?rev=1626146634>

Last update: **2025/01/21 22:07**

