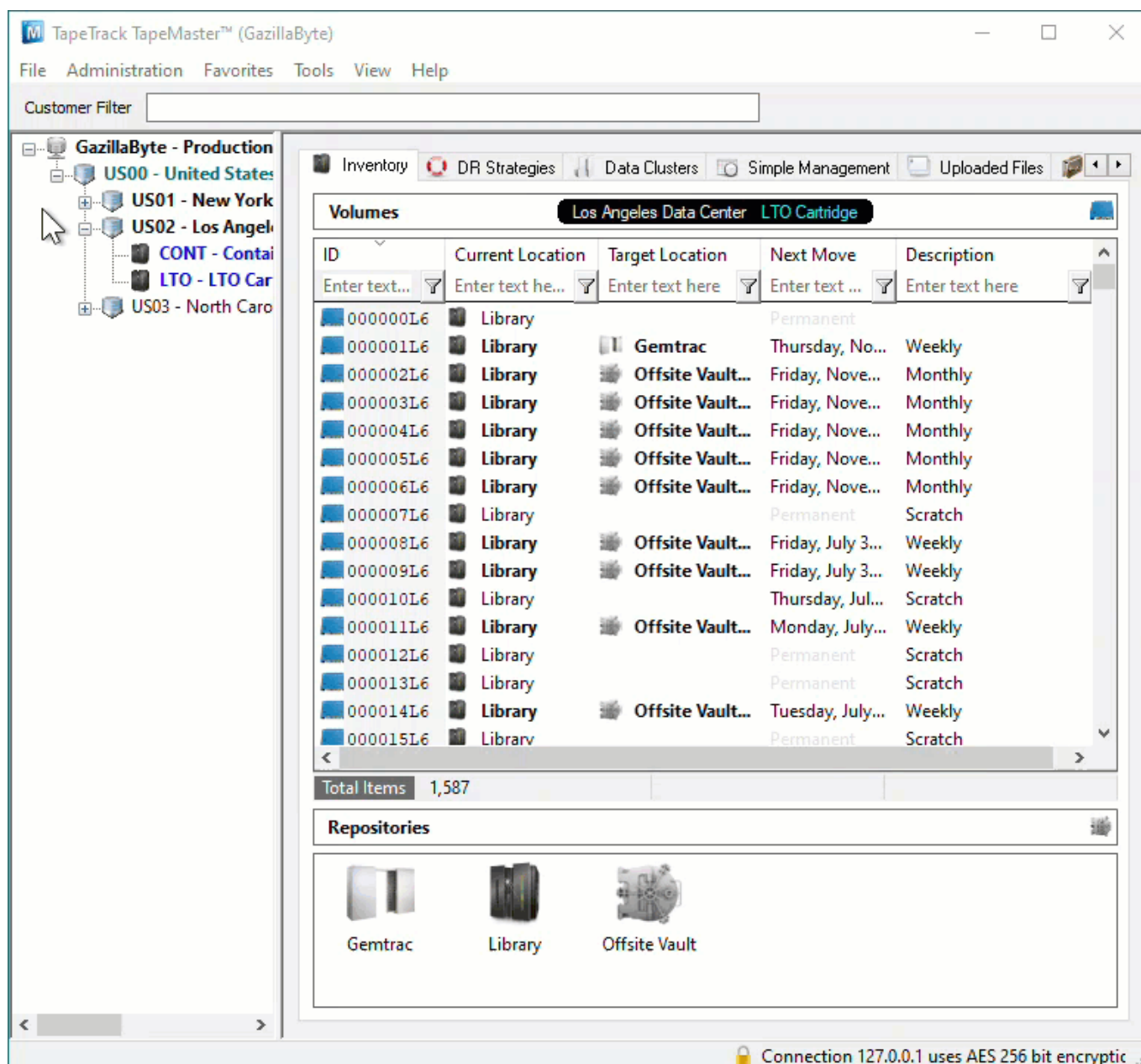


Adding and Maintaining Repositories

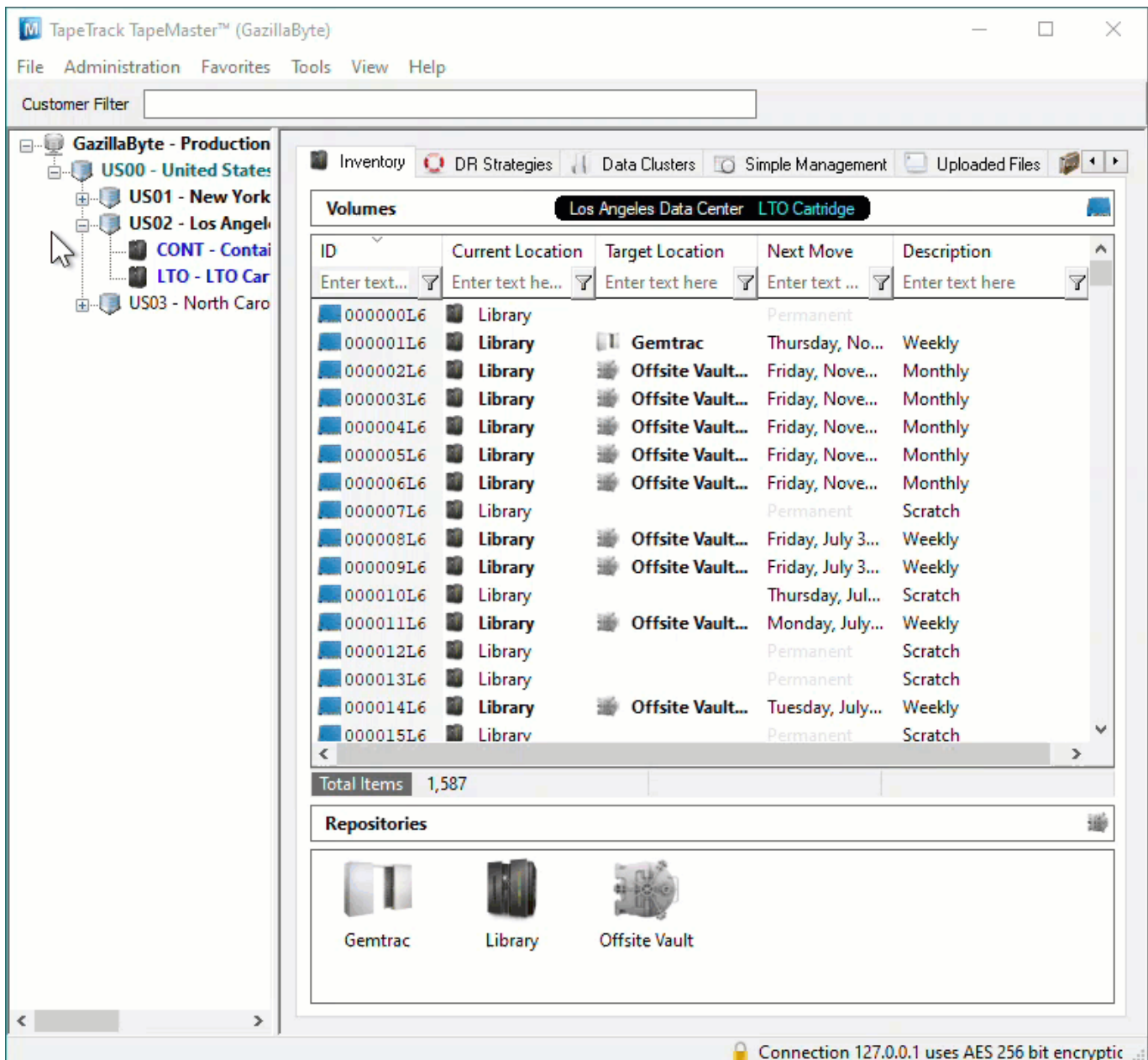
[Repositories](#) are locations where [Volumes](#) can be located. This page contains information about Adding and Deleting [Repositories](#).

Adding Repositories

To add a [Repository](#), right-click on the [Media Type](#) that the [Repository](#) will be listed under and select Add Repository.



Or, alternatively, right-click in the Repository window and select Add.



This will launch Edit New Repository window.

Basic Repository Options

Identity

Insert the [Repository-ID](#) (up to 4 permanent alphanumeric characters) and [Repository Description](#) (up to 20 alphanumeric characters).

The Repository-ID is a permanent value and cannot be edited at a later point. The Repository Description can be altered at any time.

Attributes

Customer-ID	US02	Los Angeles Data Center
Media-ID	LTO	LTO Cartridge
Repository-ID		
Description		

Save Cancel Help

Options

Select type of [Repository](#) to change display icon to match repository function. The options are:

- Racking
- Transportation
- Vault
- Library
- Legal Hold
- Disaster Recovery
- Destruction
- Ordered
- Scratch

Select the [Repository](#) the [Volume](#) will move to next (required for all automated tape movement) after this [Repository](#).

The screenshot shows a window titled "Edit New Repository" with a close button in the top right corner. Below the title bar is a navigation bar with tabs: Identity (selected), Zones, Slot Usage, Options, Usage History, Movement History, and Certification. The main area is labeled "Attributes" and contains four rows of input fields:

- Customer-ID: A dropdown menu showing "US02" and a text field containing "Los Angeles Data Center".
- Media-ID: A dropdown menu showing "LTO" and a text field containing "LTO Cartridge".
- Repository-ID: A text field containing "TRAN".
- Description: A text field containing "Transport".

At the bottom of the window are three buttons: "Save", "Cancel", and "Help".

Click Save to create [Repository](#).

Advanced Repository Options

- [Zones](#)
- [Slot Usage](#)
- [Options](#)
- [Usage History](#)
- [Movement History](#)
- [Certification](#)

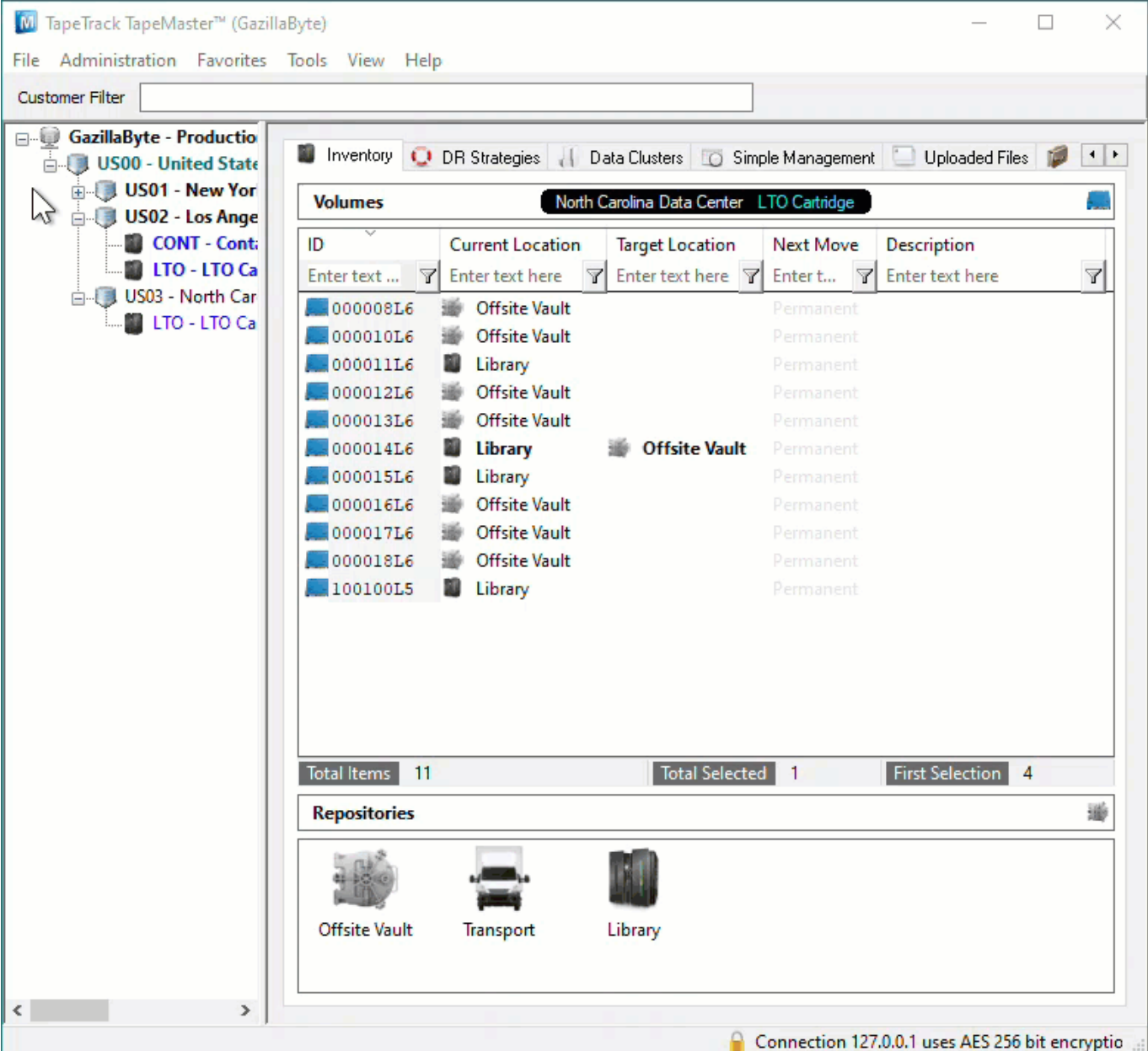
Deleting a Repository

Before you can delete the Repository, move all [Volumes](#) from the Repository and Confirm into another location. Any [Volumes](#) in a move to the [Repository](#) will be placed in a move to the Initial [Repository](#).

To delete a [Repository](#), right-click on the [Repository](#) that needs to be deleted and select Delete.

If the [Repository](#) you are attempting to delete is the current Default Repository, you will receive a popup confirming you want to reset the Default value, click Yes to continue.

Click Yes to the Confirm Delete popup.



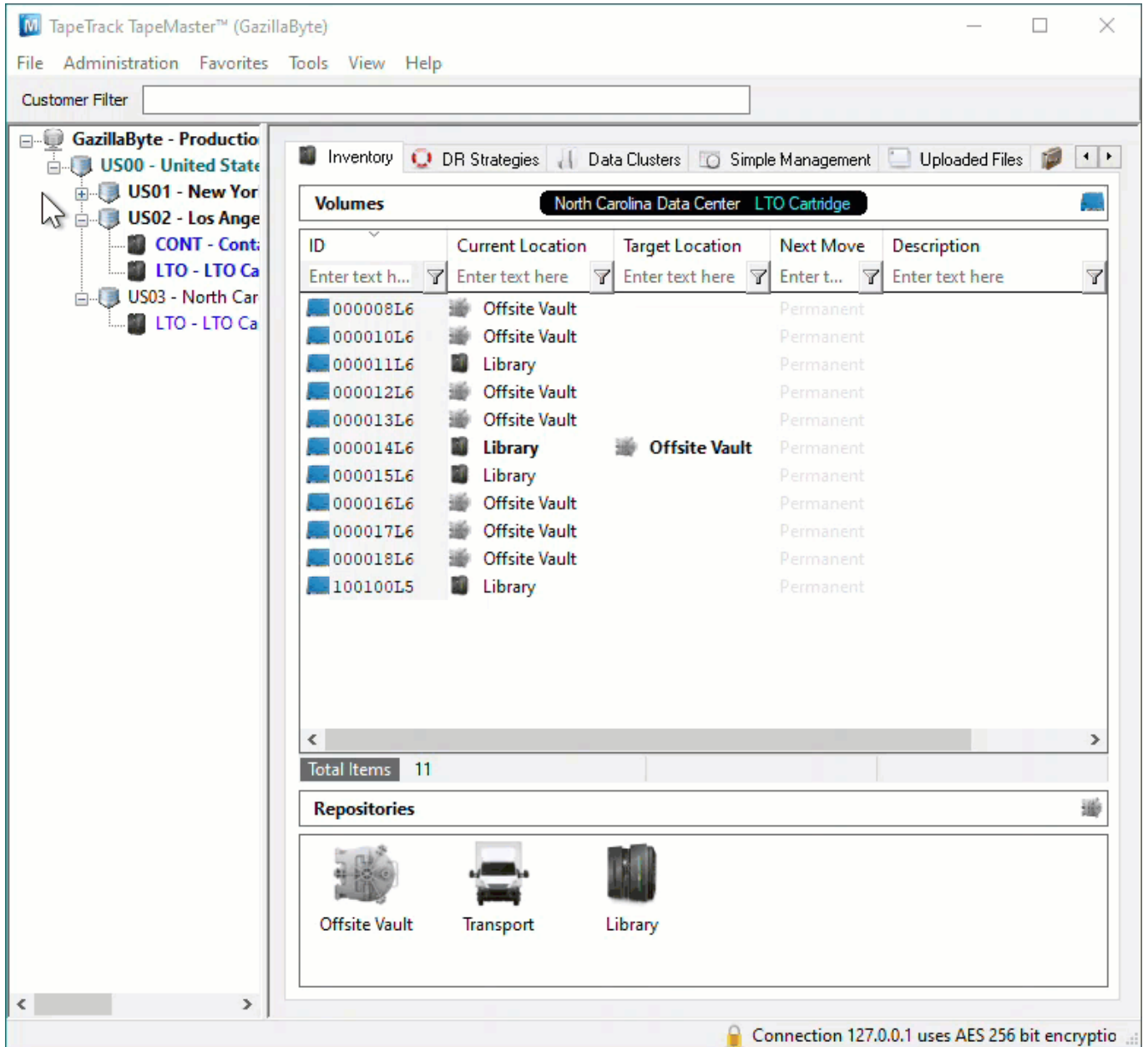
The screenshot shows the TapeTrack TapeMaster™ (GazillaByte) interface. The main window displays a list of Volumes under the heading "Volumes" with the filter "North Carolina Data Center LTO Cartridge". The table below shows the details of these volumes:

ID	Current Location	Target Location	Next Move	Description
000008L6	Offsite Vault		Permanent	
000010L6	Offsite Vault		Permanent	
000011L6	Library		Permanent	
000012L6	Offsite Vault		Permanent	
000013L6	Offsite Vault		Permanent	
000014L6	Library	Offsite Vault	Permanent	
000015L6	Library		Permanent	
000016L6	Offsite Vault		Permanent	
000017L6	Offsite Vault		Permanent	
000018L6	Offsite Vault		Permanent	
100100L5	Library		Permanent	

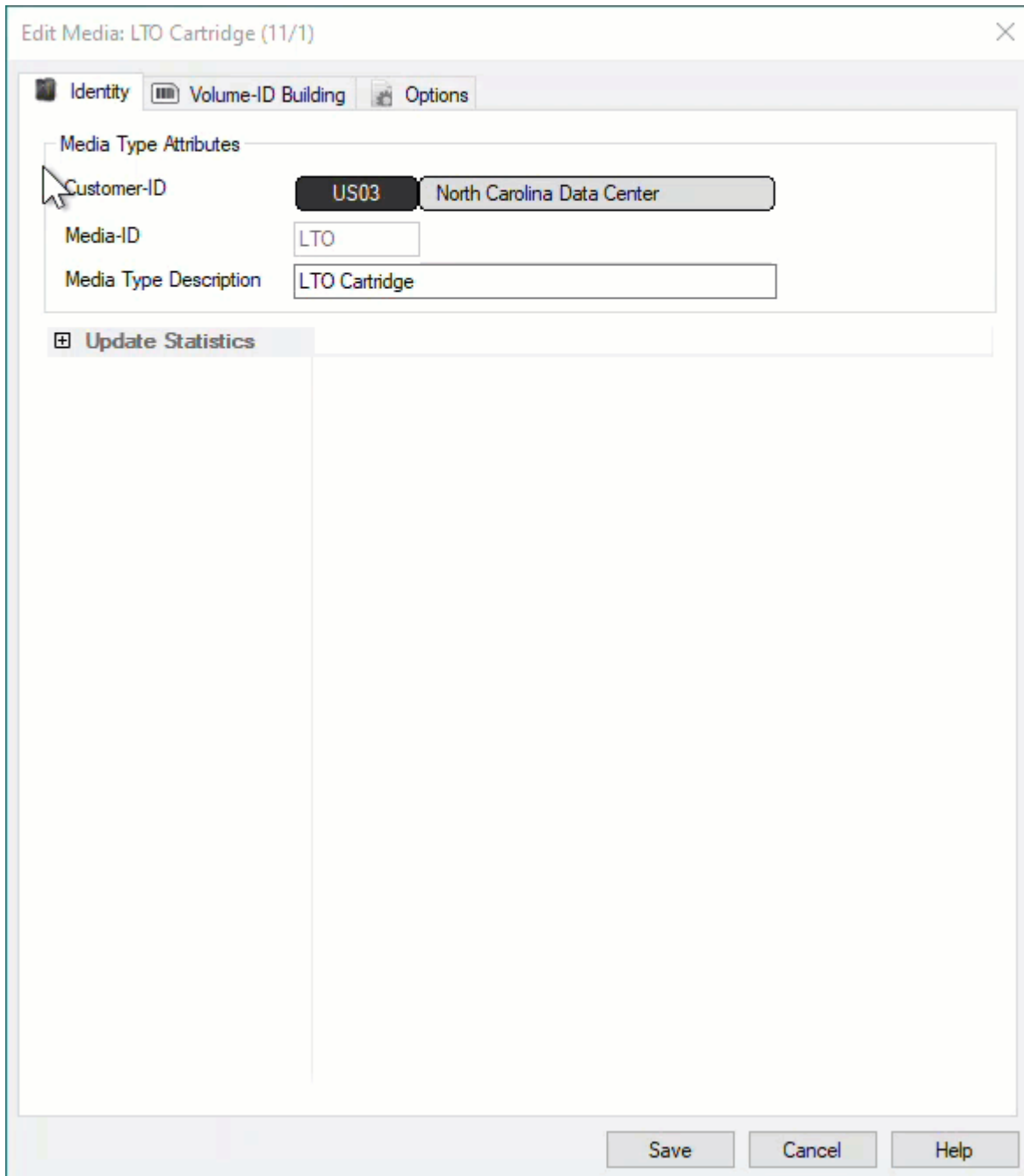
Below the table, the summary shows: Total Items 11, Total Selected 1, and First Selection 4. The "Repositories" section at the bottom displays icons for Offsite Vault, Transport, and Library.

In older releases, any [Repository](#) set as the default (where [Volumes](#) are added to when a Target [Repository](#) is not specified) cannot be deleted until the dependency is removed.

To remove the default setting, right-click the [Media Type](#) in the [Customer Tree](#) and select Properties.



On the Options tab, change the setting Default Repository to <No Selection>, or another [Repository](#), and click Save.



The [Repository](#) may now be deleted by right-clicking and selecting Delete and OK to warning dialog.

From:
<https://rtfm.tapetrack.com/> - **TapeTrack Documentation**

Permanent link:
<https://rtfm.tapetrack.com/master/repository?rev=1626664010>

Last update: **2025/01/21 22:07**

