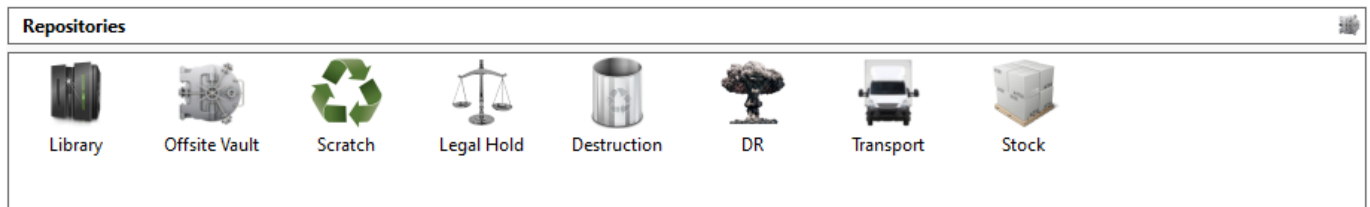
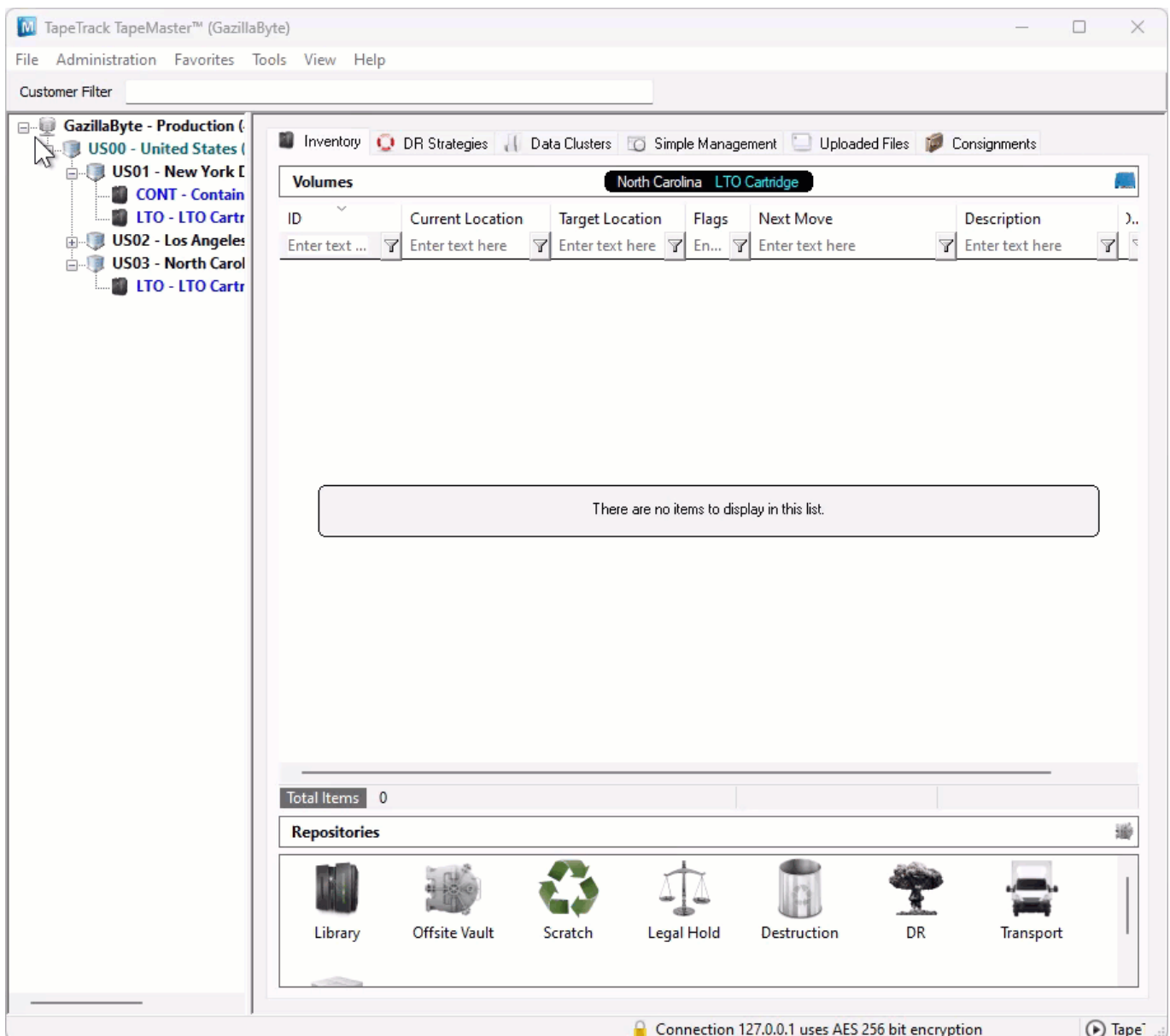


Repository Window

The [Repository](#) window displays current [Repositories](#) allocated to the displayed [Media Type](#) of the selected [Customer](#).



Right-Click Options



- [Add](#): Adds a new [Repository](#).
- [Delete](#): Deletes a current [Repository](#).

- Edit:
 - Paste Volumes: Pastes **Volumes** from clipboard.
- Generate Certificate: Generates a certificate recording creation time, volume count, number of **Volumes** marked as either surplus or deficit.
- Make Default Repository: Designates the **Repository** as the default location all new **Volumes** will be added to when created.
- Manage: Manage libraries, eject **Volumes** and add Scratch **Volumes** .
- Properties: Open **Repository** properties window.
- Scan:
 - To Add: Open scan window to add new **Volumes** .
 - To Scan-In: Open scan window to scan in **Volumes** to the selected **Repository**.
 - To Scan-Out: Open scan window to scan out **Volumes** from the selected **Repository**.
 - To Move: Open scan window to scan **Volumes** to be placed in a move status from their current location to the selected **Repository**.
- Size:
 - Normal Size: Display **Repository** window at normal size.
 - Normal Size x 1.5: Display **Repository** window at 1.5 times the normal size.
 - Normal Size x 2: Display **Repository** window at 2 times the normal size.
- **View Repository Usage Map:**
- Visibility:
 - Hide: Hide or remove **Repository** from view.
 - Show Hidden: Show hidden **Repositories**.
 - Un-Hide: Un-hide or make visible hidden **Repositories**.

From:
<https://rtfm.tapetrack.com/> - **TapeTrack Documentation**

Permanent link:
https://rtfm.tapetrack.com/master/repository_right_menu?rev=1672185246

Last update: **2025/01/21 22:07**

