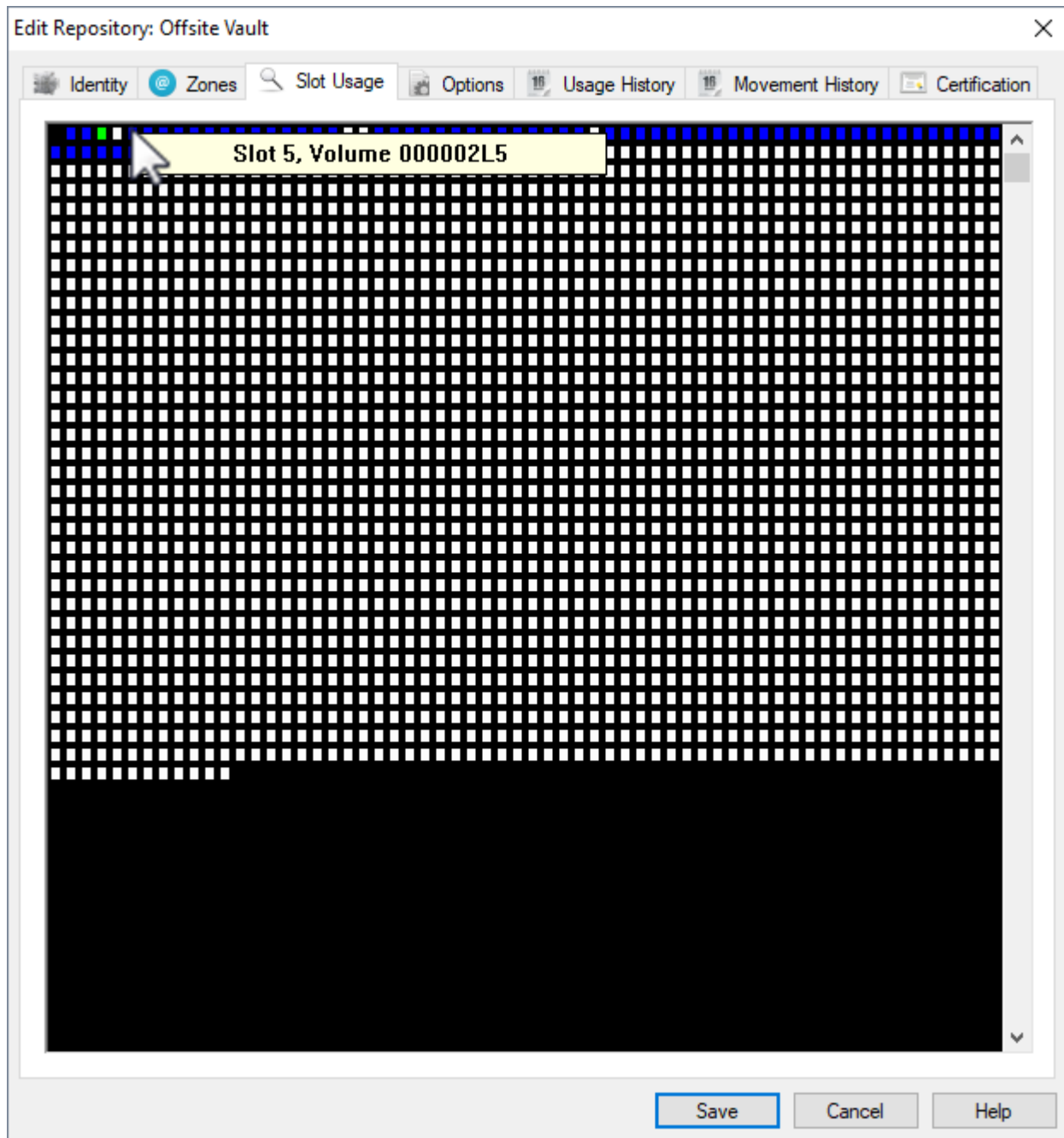


Slot Usage Tab

The Slot Usage Tab in the Repository Properties Window contains a visual representation of the Slots that are currently in use in the selected Repository. [image](#)

Operations

Left-click and hold on any slot to display its slot number and the Volume assigned to it.



- **White Squares** indicate a vacant slot.
- **Green Squares** indicate slot occupied by a container.
- **Blue Squares** indicate a slot occupied by a volume.

Click Cancel or X to close window.

From:
<https://rtfm.tapetrack.com/> - **TapeTrack Documentation**

Permanent link:
https://rtfm.tapetrack.com/master/repository_slots?rev=1508195740

Last update: **2025/01/21 22:07**

