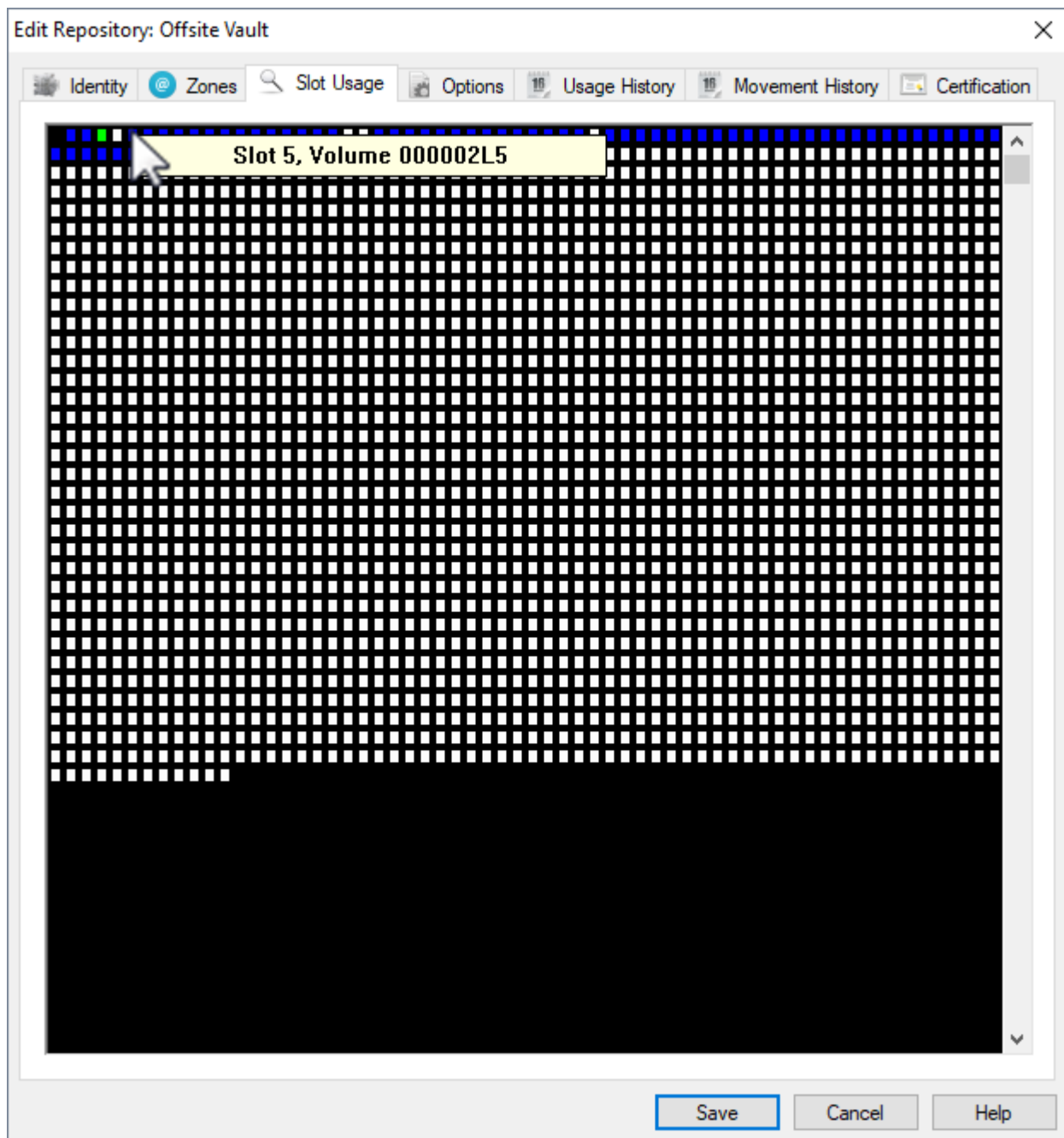


## Slot Usage Tab

The Slot Usage Tab in the Repository Properties Window contains a visual representation of the Slots that are currently in use in the selected Repository.



## Operations

Left-click and hold on any slot to display its slot number and the Volume assigned to it.

- **White Squares** indicate a vacant slot.
- **Green Squares** indicate slot occupied by a Container.
- **Blue Squares** indicate a slot occupied by a volume.

Click Cancel or X to close window.

From:

<https://rtfm.tapetrack.com/> - **TapeTrack Documentation**

Permanent link:

[https://rtfm.tapetrack.com/master/repository\\_slots?rev=1653357642](https://rtfm.tapetrack.com/master/repository_slots?rev=1653357642)

Last update: **2025/01/21 22:07**

