
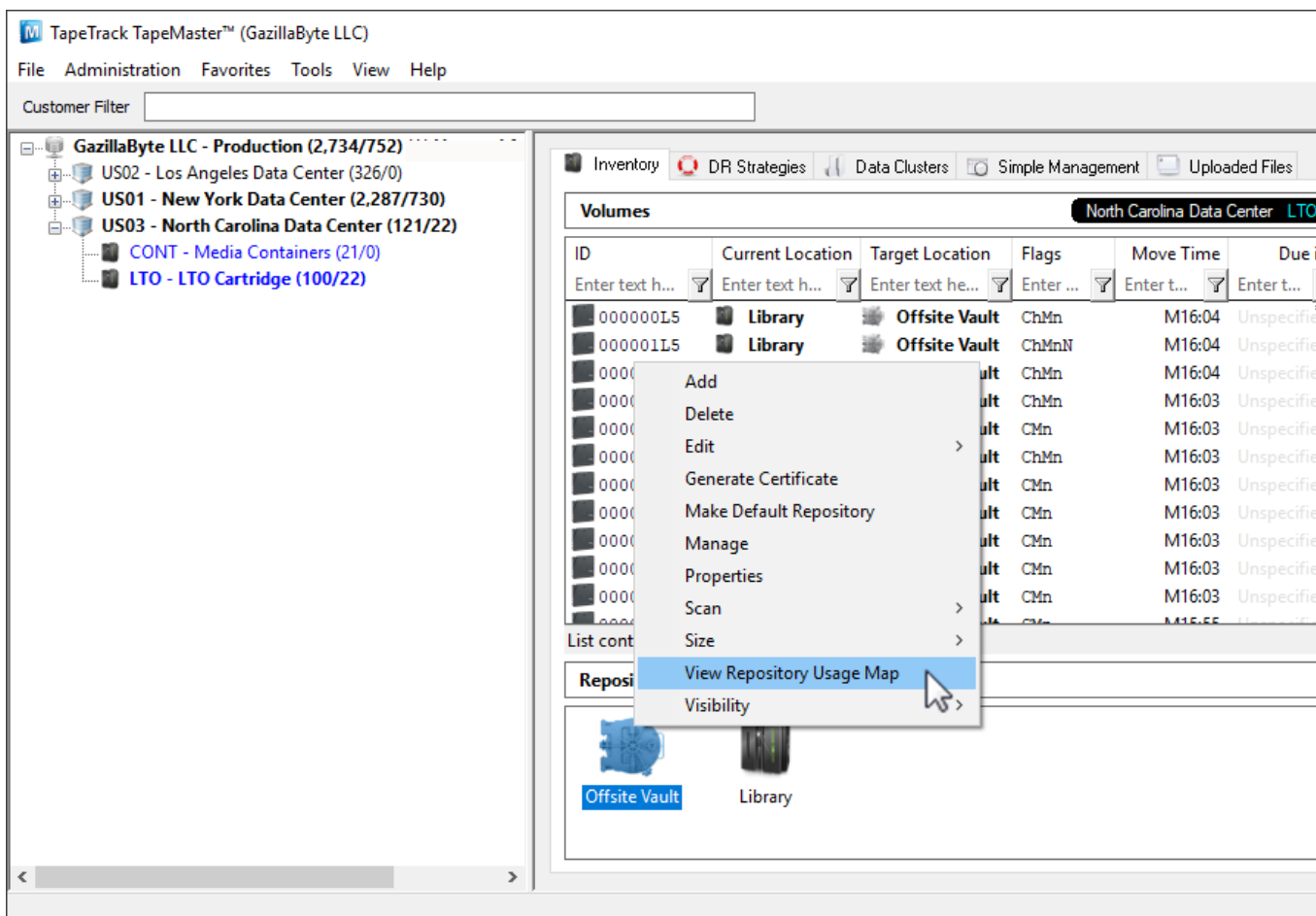


Scan To Assign Slots

The Scan to assign slot function allows you to select a zone and slot/s to allocate a group of volumes to using a barcode scanner.

 To use this function you must have zone/s assigned to the selected repository with sufficient vacant slots.

With the required Customer and Media Type open, right-click the repository to assign the slots for and click View Repository Usage Map



Select the range of slots (control + shift click or control + click) from the required zone/s. Right-click highlighted slots and select Scan to Assign to open the scan in window.

The screenshot shows a table titled "Offsite Vault" with columns: Slot, Zone, Location, Volser, and Status. A context menu is open over a row, with "Scan To Assign" highlighted. The status of all slots is "Empty".

Slot	Zone	Location	Volser	Status
000007	@ 1:1	1.7		Empty
000008	@ 1:1	1.8		Empty
000009	@ 1:1	1.9		Empty
000010	@ 1:1	1.10		Empty
000011	@ 1:1	1.11		Empty
000012	@ 1:1	1.12		Empty
000013	@ 1:1	1.13		Empty
000014	@ 1:1	1.14		Empty
000015	@ 1:1	1.15		Empty
000016	@ 1:1	1.16		Empty
000017	@ 1:1	1.17		Empty
000018	@ 1:1	1.18		Empty
000019	@ 1:1	1.19		Empty
000020	@ 1:1	1.20		Empty
000021	@ 1:2	1.1		Empty
000022	@ 1:2			Empty
000023	@ 1:2			Empty
000024	@ 1:2			Empty
000025	@ 1:2			Empty
000026	@ 1:2			Empty
000027	@ 1:2			Empty
000028	@ 1:2			Empty
000029	@ 1:2	1.9		Empty
000030	@ 1:2	1.10		Empty
000031	@ 1:2	1.11		Empty
000032	@ 1:2	1.12		Empty
000033	@ 1:2	1.13		Empty
000034	@ 1:2	1.14		Empty

List contains 60 records Selected=10 First Selected=21

Scan the **volumes** in using a barcode scanner in the order you want them slotted.

The screenshot shows the "Scan to Assign" window. At the top, a large text field displays "000004L5" and a barcode below it. To the right are icons for clipboard, print, and back. Further right are "Defaults" and "Options" sections. Below the barcode is a table of scanned volumes.

Barcode	Customer	Media Type	Volume-ID	Message
000003L5	North Carolina Data Center	LTO Cartridge	000003L5	Request OK
000001L5	North Carolina Data Center	LTO Cartridge	000001L5	Request OK
000000L5	North Carolina Data Center	LTO Cartridge	000000L5	Request OK

Messages (3)

Once the **volumes** have been scanned, close the scan window. Allocated **volumes** will be displayed with a slot status of **paste update pending**. Right-click the highlighted volumes and select **Apply Updates** to save the changes to the database.

Slot	Zone	Location	Volser	Status
000007	@ 1:1	1.7		Empty
000008	@ 1:1	1.8		Empty
000009	@ 1:1	1.9		Empty
000010	@ 1:1	1.10		Empty
000011	@ 1:1	1.11		Empty
000012	@ 1:1	1.12		Empty
000013	@ 1:1	1.13		Empty
000014	@ 1:1	1.14		Empty
000015	@ 1:1	1.15		Empty
000016	@ 1:1	1.16		Empty
000017	@ 1:1	1.17		Empty
000018	@ 1:1	1.18		Empty
000019	@ 1:1	1.19		Empty
000020	@ 1:1	1.20		Empty
000021	@ 1:2	1.1	000000L5	Paste update pending
000022	@ 1:2	1.2	000001L5	Paste update pending
000023	@ 1:2	1.3	000003L5	Paste update pending
000024	@ 1:2	1.4	000004L5	Paste update pending
000025	@ 1:2	1.5		Empty
000026	@ 1:2	1.6		Empty
000027	@ 1:2	1.7		Empty
000028	@ 1:2	1.8		Empty
000029	@ 1:2	1.9		Empty
000030	@ 1:2	1.10		Empty
000031	@ 1:2	1.11		Empty
000032	@ 1:2	1.12		Empty
000033	@ 1:2	1.13		Empty
000034	@ 1:2	1.14		Empty

Context menu options: Apply Updates, Confirm, Edit, Refresh, Scan To Assign

List contains 60 records | Selected=10 | First Selected=21

Once the update has been performed the slot status will now display as reserved and the volumes will now be in a **move status** in TapeMaster.

If the volumes are not yet physically slotted, close the Slot allocation window and press F5 in the inventory window in TapeMaster to refresh display information. If the volumes are physically in their allocated slots you can confirm them by right-clicking the highlighted volumes and selecting Confirm before closing the window.

From: <https://rtfm.tapetrack.com/> - **TapeTrack Documentation**

Permanent link: https://rtfm.tapetrack.com/master/repository_zone_scantoassign?rev=1530823867

Last update: **2025/01/21 22:07**

