

Ping Server

Ping Server allows you to ping the TapeTrack Framework Server, using TMSS10Ping, from within TapeMaster, negating the need to open a command prompt and run the program from there.



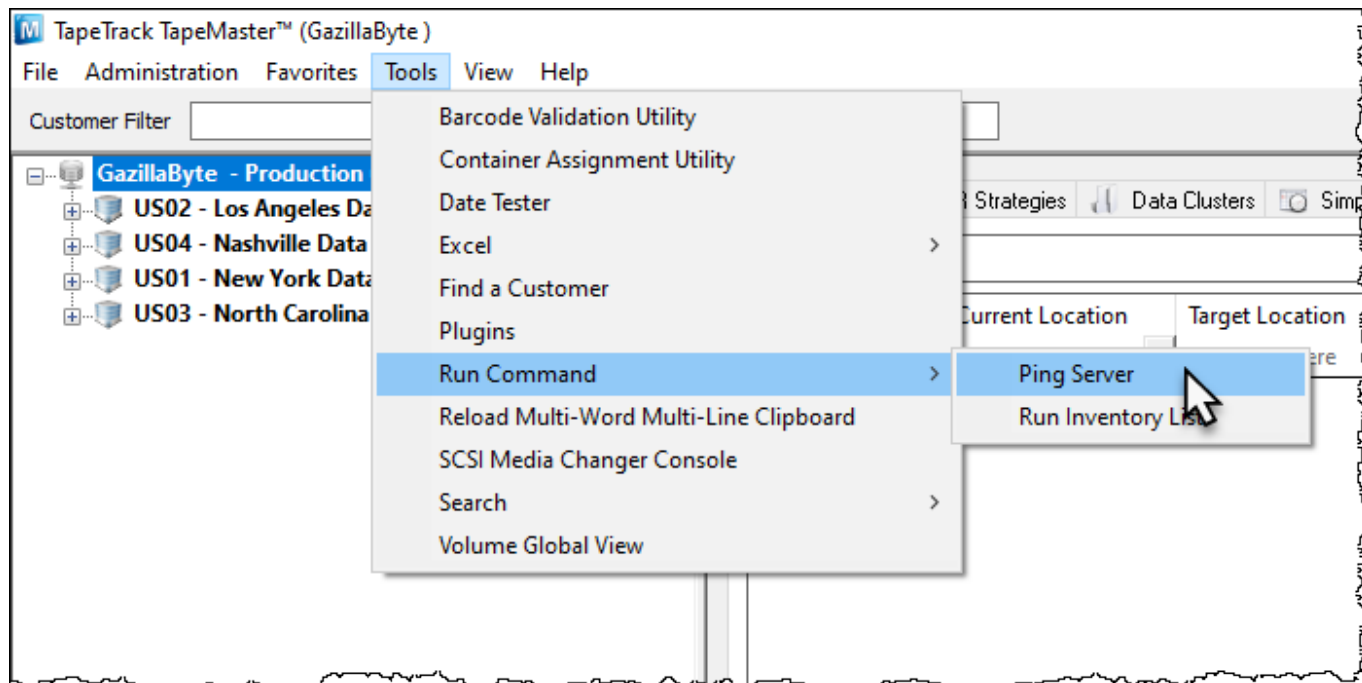
Unlike the `ping` command which sends ICMP echo packets, TMSS10Ping sends payload packets via the TCP/IP protocol. This means that even if a firewall is configured to block ping requests, if TapeTrack connections are allowed, then TMSS10Ping packets will be successful.

The settings to execute TMSS10Ping via the TapeMaster menu are contained in the TapeMaster Config file. These settings need to be customised to your values before the command will execute successfully.

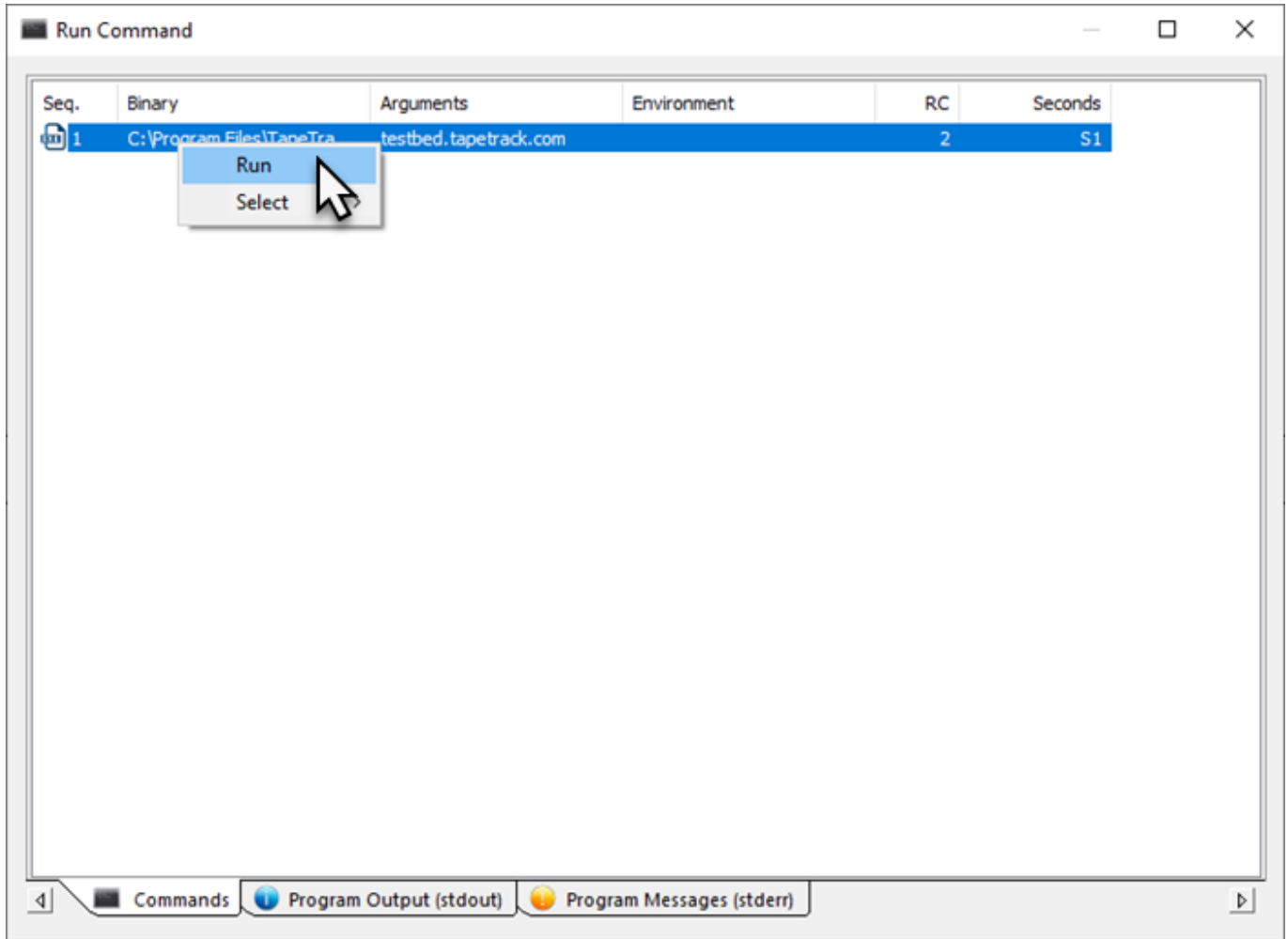
For detailed information on configuring the the commands in the TapeMaster Config file see [Configuring TapeMaster Commands](#)

Execute Ping Server

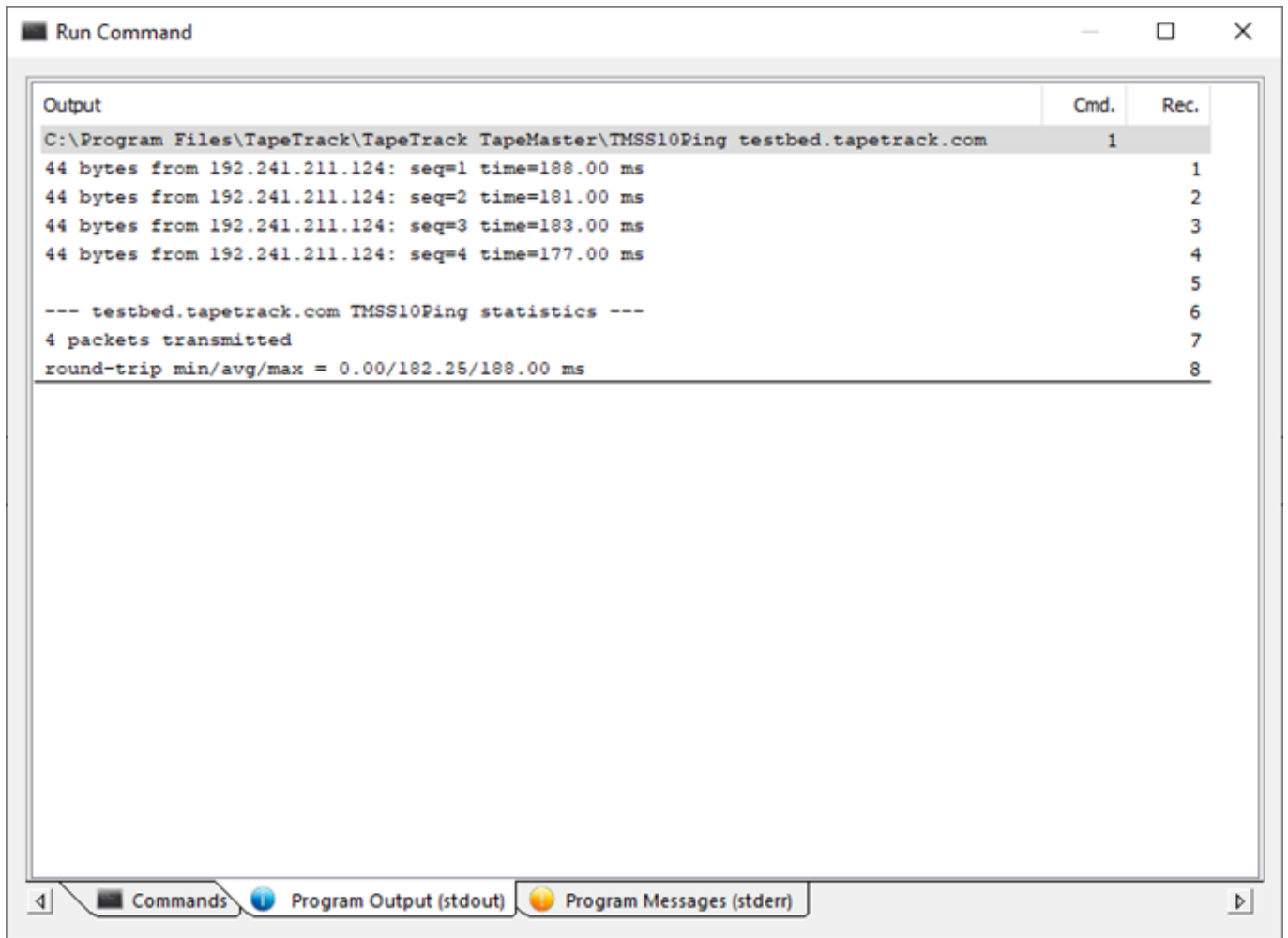
From the main menu in TapeMaster, select Tools > Run Command > Ping Server



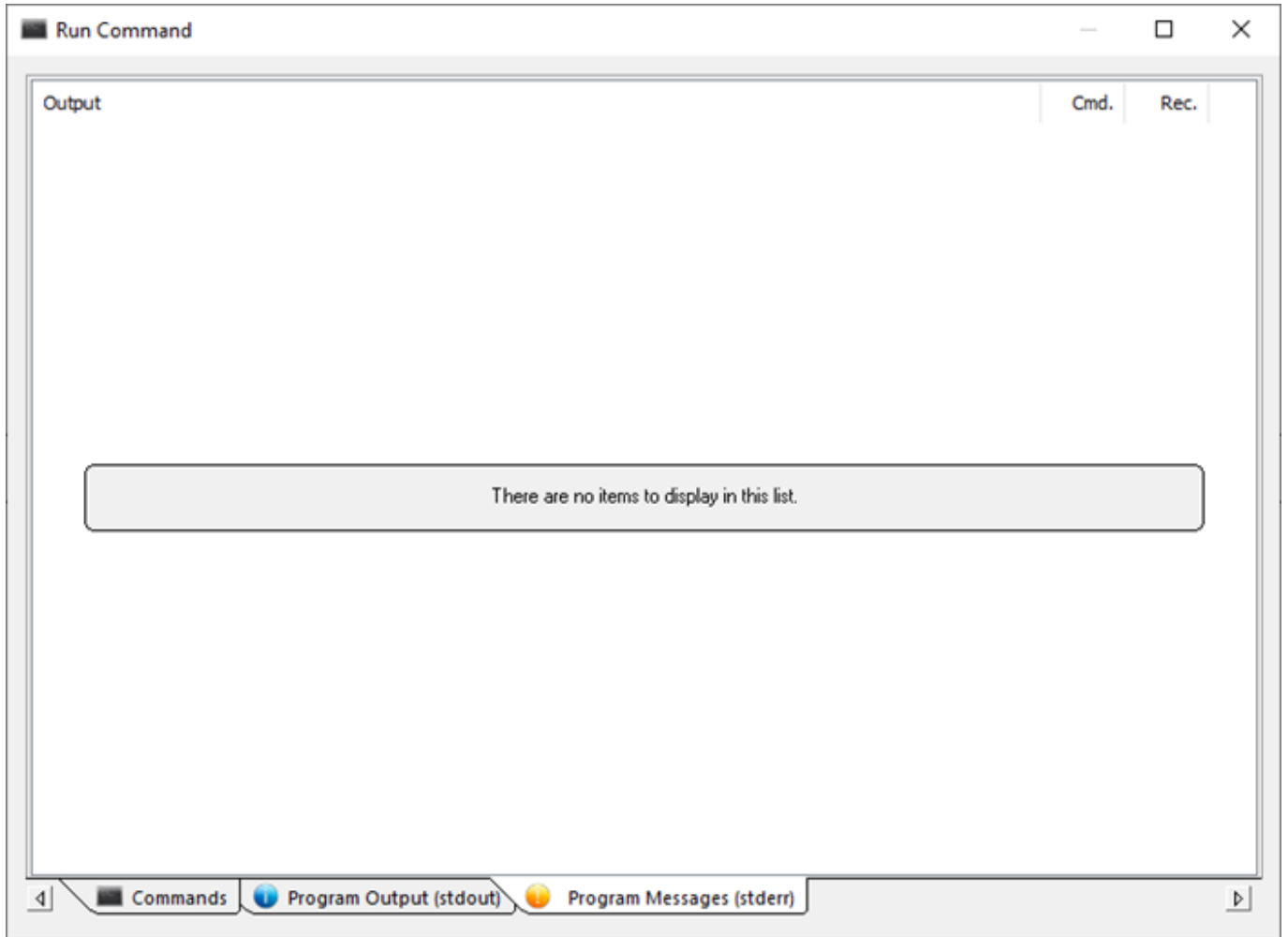
From the Run Command window, right click TMSS10Ping entry and select Run to execute the command.



Select the Program Output (stdout) tab to view the results.

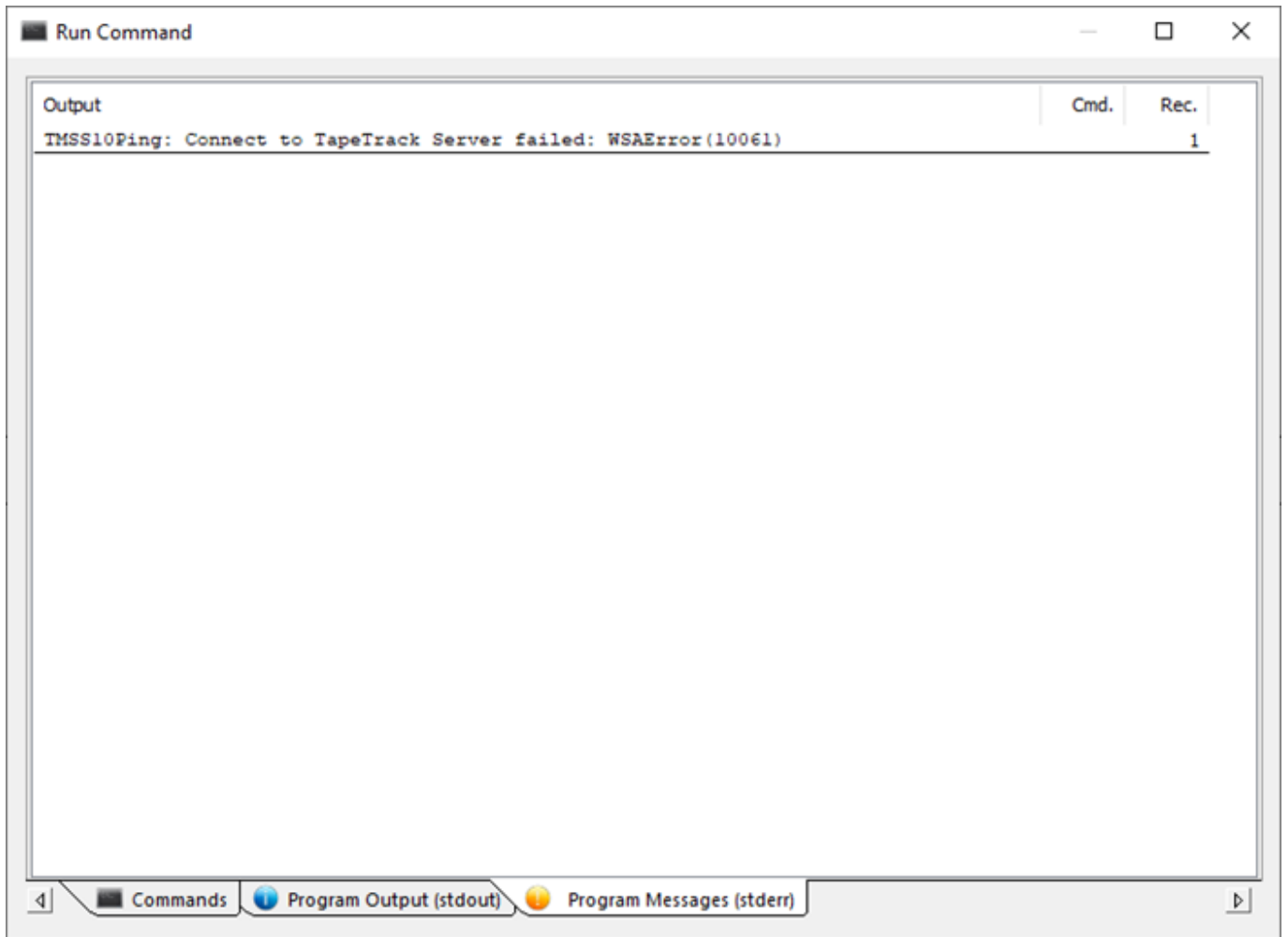


The Program Messages (stderr) will be blank as no output is passed to the stderr during normal execution.



If the execution of the command encountered any errors they will be displayed in the Program Messages (stderr) tab.

in this example the Framework Server was shut down before running TMSS10Ping and returned an error stating the Server could not be contacted.



update doco, cli, ping, tapemaster

From:
<https://rtfm.tapetrack.com/> - **TapeTrack Documentation**

Permanent link:
https://rtfm.tapetrack.com/master/run_command_ping?rev=1610497297

Last update: **2025/01/21 22:07**

