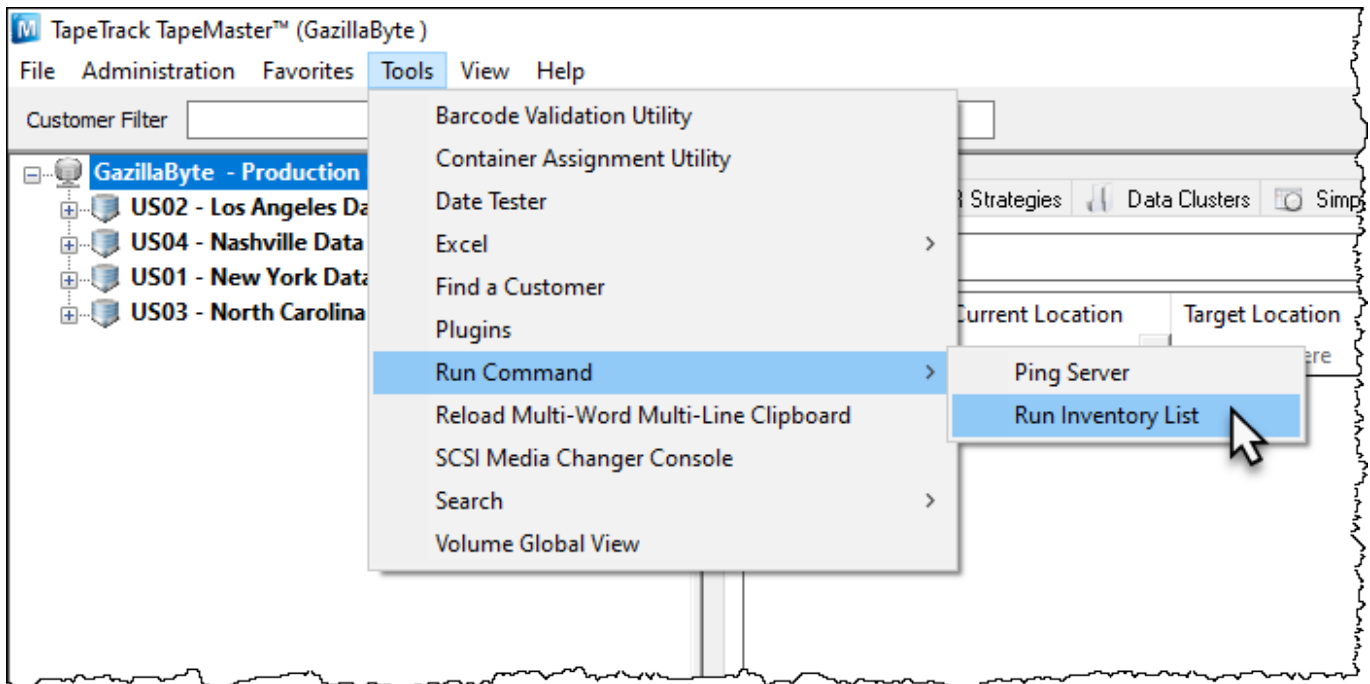


Run Inventory List

Using Run Inventory List allows you to execute TMSS10Inventory from within TapeMaster, negating the need to open a command prompt and execute the program manually.

Execute Run Inventory List

From the main menu in TapeMaster, select Tools > Run Command > Run Inventory List



Last update:

2025/01/21 master:run_command_run_inventory_list https://rtfm.tapetrack.com/master/run_command_run_inventory_list?rev=1594087295
22:07

Seq.	Binary	Arguments	Environment	RC	Seconds
1	r:\bin\Win32\TMSS 10Inve...	-S testuser:-testuser@w...	TMSREPORTFORMAT=P...		

Run Command

Output	Cmd.	Rec.
C:\Program Files\TapeTrack\TapeTrack TapeMaster\TMSS10Ping testbed.tapetrack.com	1	
44 bytes from 192.241.211.124: seq=1 time=188.00 ms		1
44 bytes from 192.241.211.124: seq=2 time=181.00 ms		2
44 bytes from 192.241.211.124: seq=3 time=183.00 ms		3
44 bytes from 192.241.211.124: seq=4 time=177.00 ms		4
		5
--- testbed.tapetrack.com TMSS10Ping statistics ---		6
4 packets transmitted		7
round-trip min/avg/max = 0.00/182.25/188.00 ms		8

Commands Program Output (stdout) Program Messages (stderr)

The screenshot shows a web-based interface window titled "Run Command". The window has a standard title bar with minimize, maximize, and close buttons. Below the title bar is a header area with the word "Output" on the left and "Cmd." and "Rec." on the right. The main content area is a large white rectangle containing a grey rounded rectangle with the text "There are no items to display in this list." At the bottom of the window, there is a tabbed interface with three tabs: "Commands" (selected), "Program Output (stdout)", and "Program Messages (stderr)".

From:
<https://rtfm.tapetrack.com/> - **TapeTrack Documentation**

Permanent link:
https://rtfm.tapetrack.com/master/run_command_run_inventory_list?rev=1594087295

Last update: **2025/01/21 22:07**

