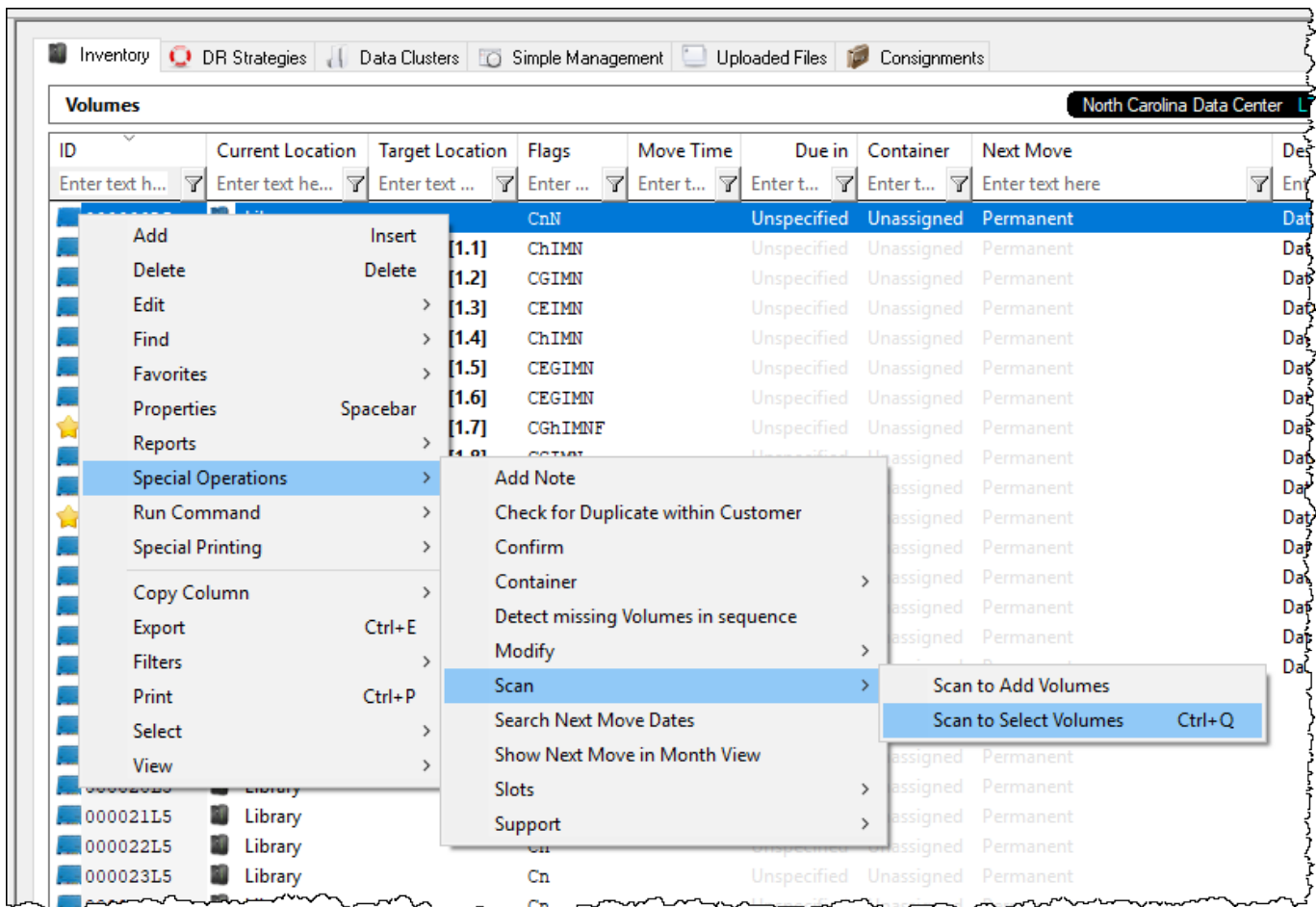


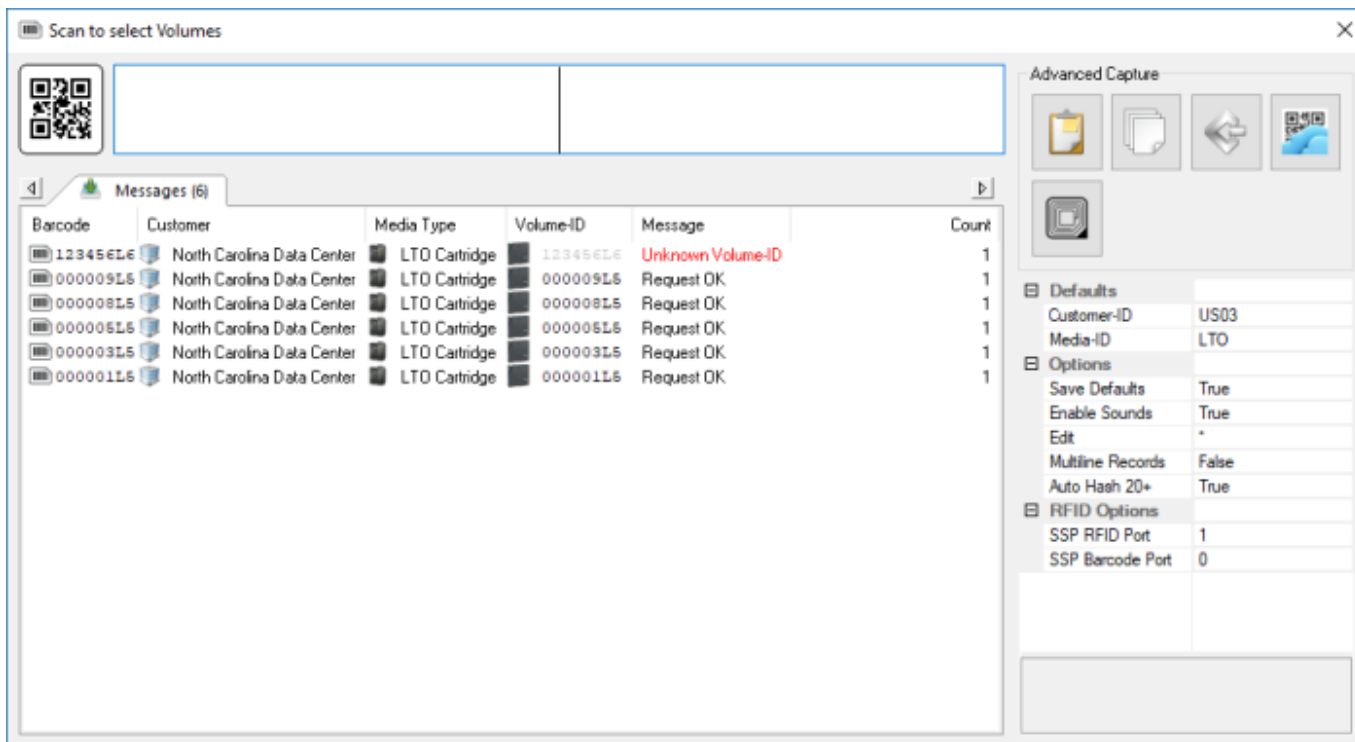
Scan to Select Volumes

Right-hand click in the Volume Window of TapeMaster.

Select Special Operations → Scan → Scan to Select Volumes.



Scan the **Volumes**, using your preferred **scanning method**, you wish to select.



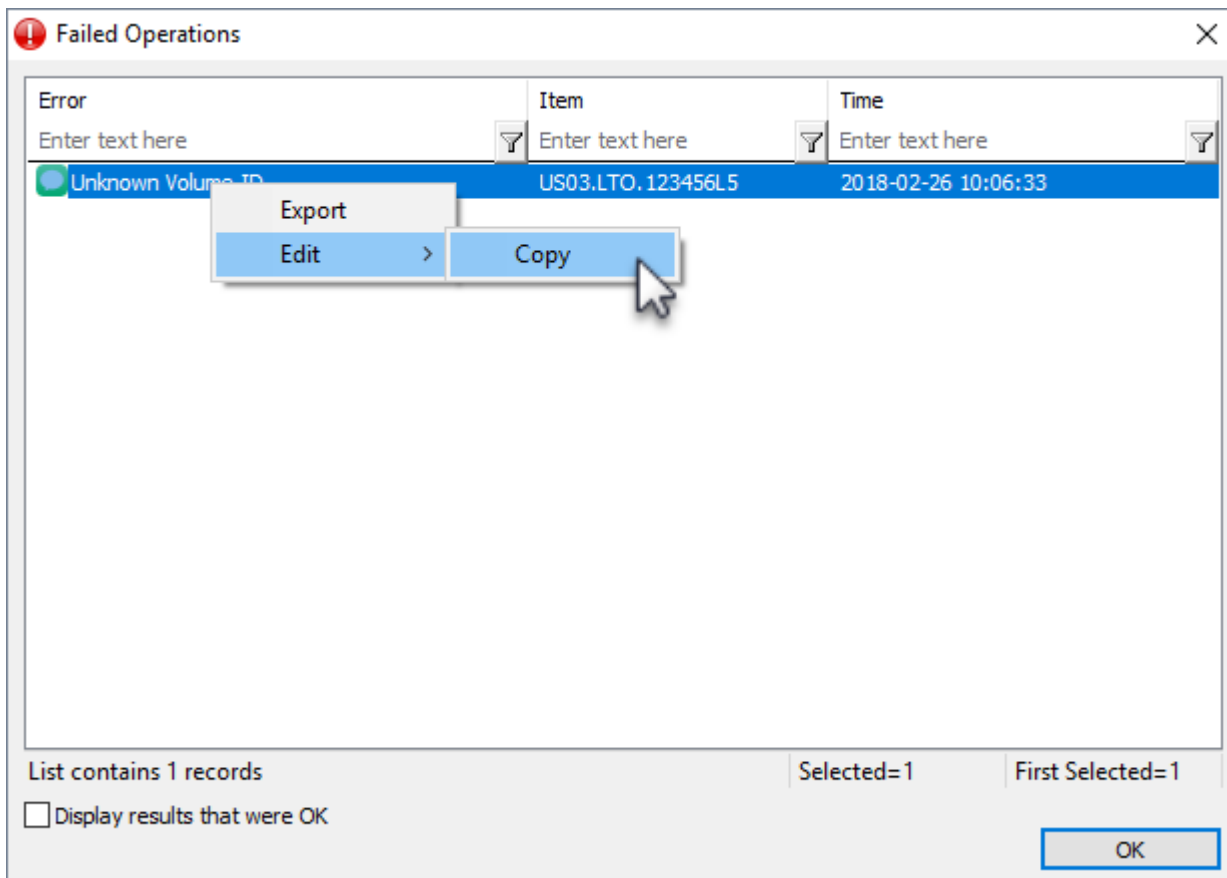
All **Volumes** present in the inventory will display **Request OK** in the scan window, any **Volumes** not present in the inventory will display **Unknown Volume-ID**.

Exit from the Scan Window by clicking the X at the top right.

If you have any scan errors, the **Failed Operations** window will display the unknown **Volumes**, as well as all successful scans if the Display results that were OK checkbox is checked. From this window you can:

- Copy **Volume-ID's** to clipboard.
- Export **Volume-ID's** to file.

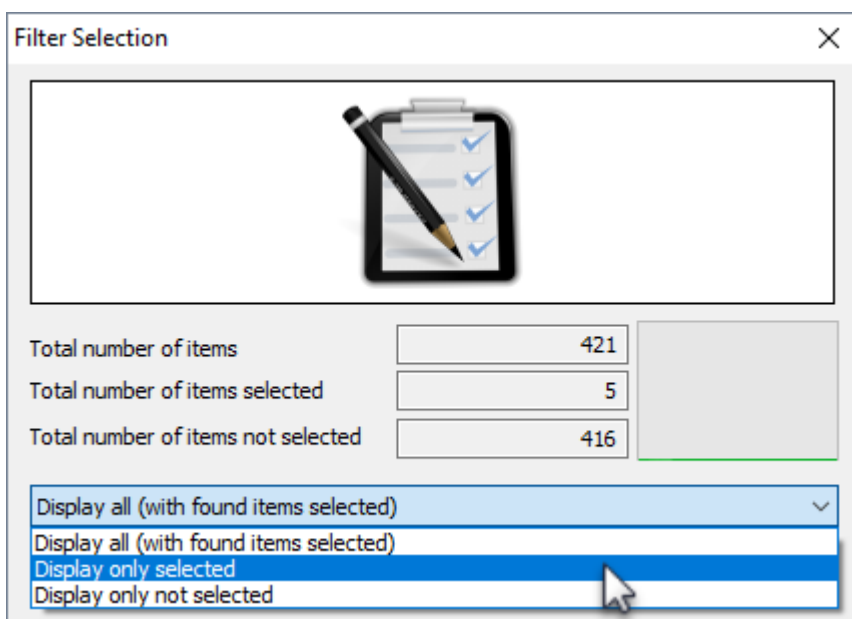
Exit Failed Operations window by clicking OK or X at the top right.

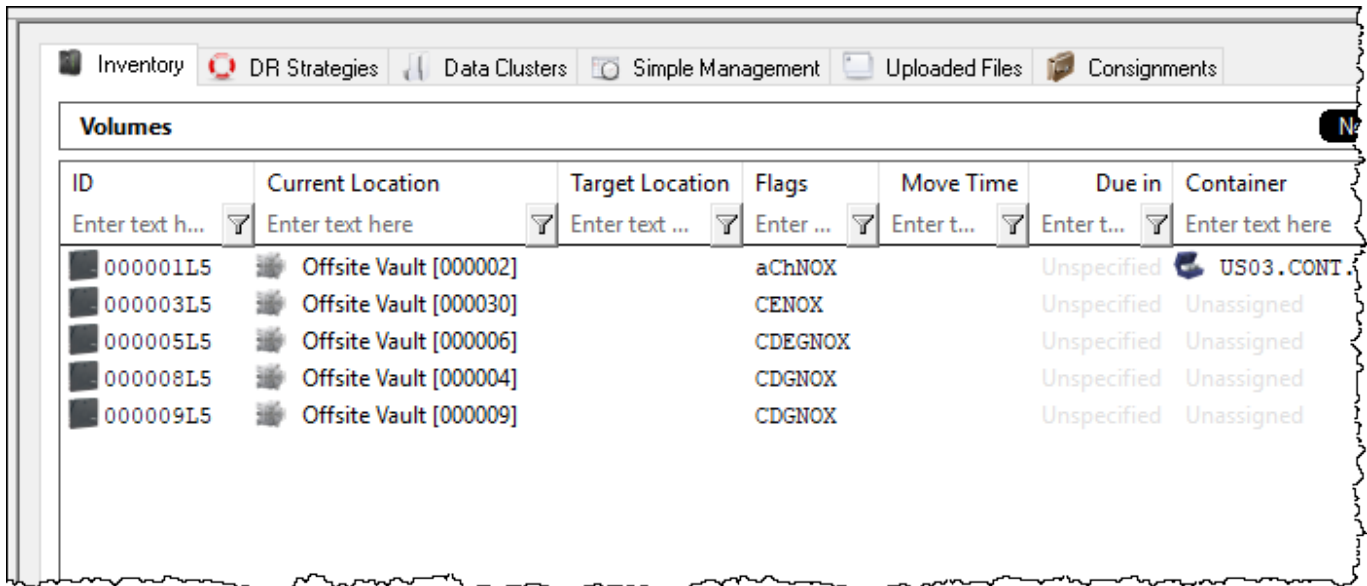


The **Filter Selection** window displays the total number of **Volumes** in the Inventory, the number of **Volumes** selected, the number of **Volumes** not selected and a graphical representation of these figures.

Use the drop-down in the results window select:

- Display all (with found items selected).
- Display only selected.
- Display only not selected.

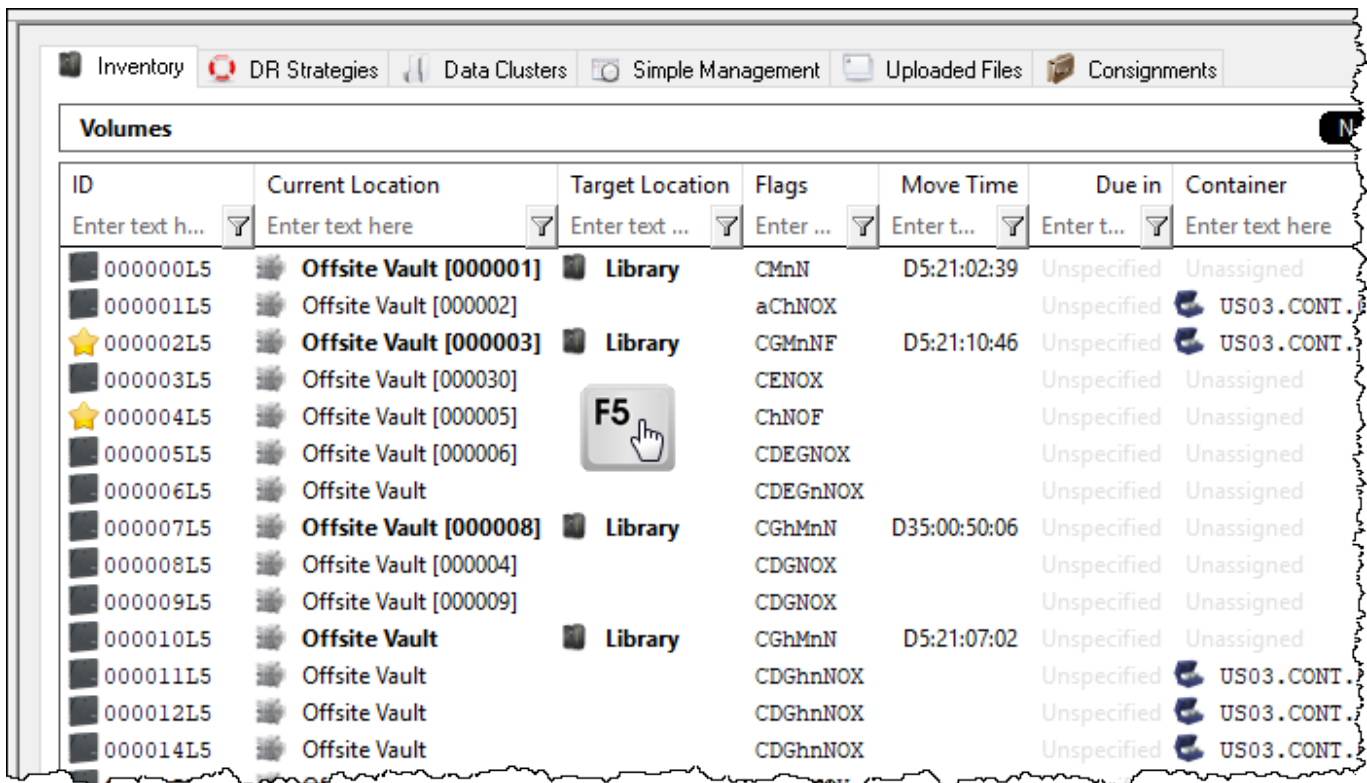




The screenshot shows the 'Volumes' section of the TapeTrack interface. The table has columns for ID, Current Location, Target Location, Flags, Move Time, Due in, and Container. The data is filtered to show only volumes with 'Offsite Vault' as the current location.

ID	Current Location	Target Location	Flags	Move Time	Due in	Container
000001L5	Offsite Vault [000002]		aChNOX		Unspecified	US03.CONT.
000003L5	Offsite Vault [000030]		CENOX		Unspecified	Unassigned
000005L5	Offsite Vault [000006]		CDEGNOX		Unspecified	Unassigned
000008L5	Offsite Vault [000004]		CDGNOX		Unspecified	Unassigned
000009L5	Offsite Vault [000009]		CDGNOX		Unspecified	Unassigned

When finished with the filtered results, clicking in the Inventory window and pressing F5 will refresh results back to full inventory display.



The screenshot shows the 'Volumes' section of the TapeTrack interface with the full inventory displayed. A grey button with 'F5' and a hand cursor is overlaid on the table, indicating the refresh action. The table includes various volumes with different current and target locations.

ID	Current Location	Target Location	Flags	Move Time	Due in	Container
000000L5	Offsite Vault [000001]	Library	CMnN	D5:21:02:39	Unspecified	Unassigned
000001L5	Offsite Vault [000002]		aChNOX		Unspecified	US03.CONT.
000002L5	Offsite Vault [000003]	Library	CGMnNF	D5:21:10:46	Unspecified	US03.CONT.
000003L5	Offsite Vault [000030]		CENOX		Unspecified	Unassigned
000004L5	Offsite Vault [000005]		ChNOF		Unspecified	Unassigned
000005L5	Offsite Vault [000006]		CDEGNOX		Unspecified	Unassigned
000006L5	Offsite Vault		CDEGnNOX		Unspecified	Unassigned
000007L5	Offsite Vault [000008]	Library	CGhMnN	D35:00:50:06	Unspecified	Unassigned
000008L5	Offsite Vault [000004]		CDGNOX		Unspecified	Unassigned
000009L5	Offsite Vault [000009]		CDGNOX		Unspecified	Unassigned
000010L5	Offsite Vault	Library	CGhMnN	D5:21:07:02	Unspecified	Unassigned
000011L5	Offsite Vault		CDGhnNOX		Unspecified	US03.CONT.
000012L5	Offsite Vault		CDGhnNOX		Unspecified	US03.CONT.
000014L5	Offsite Vault		CDGhnNOX		Unspecified	US03.CONT.

From: <https://rtfm.tapetrack.com/> - **TapeTrack Documentation**

Permanent link: <https://rtfm.tapetrack.com/master/scan-to-select-volumes>

Last update: **2025/01/21 22:07**

