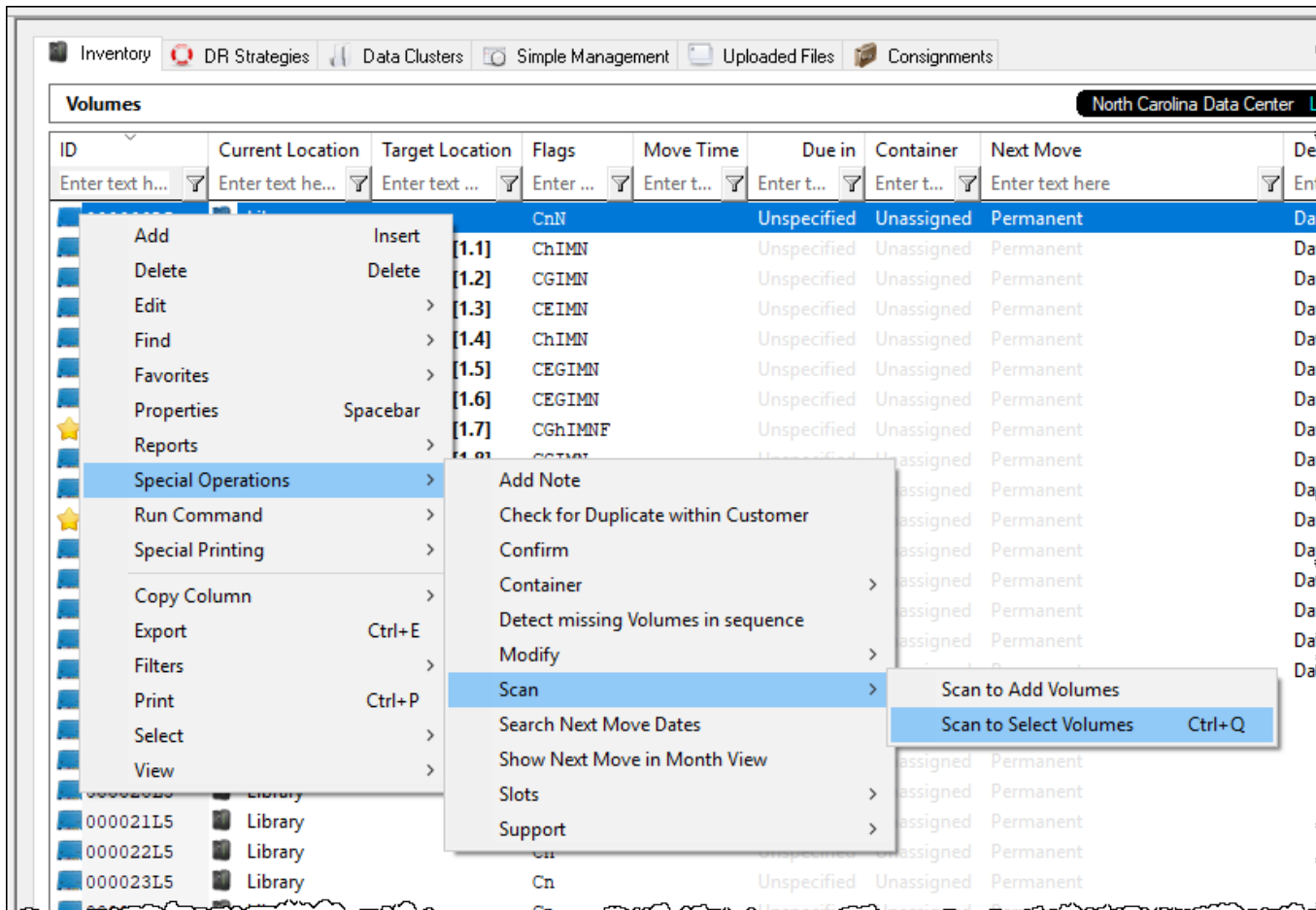


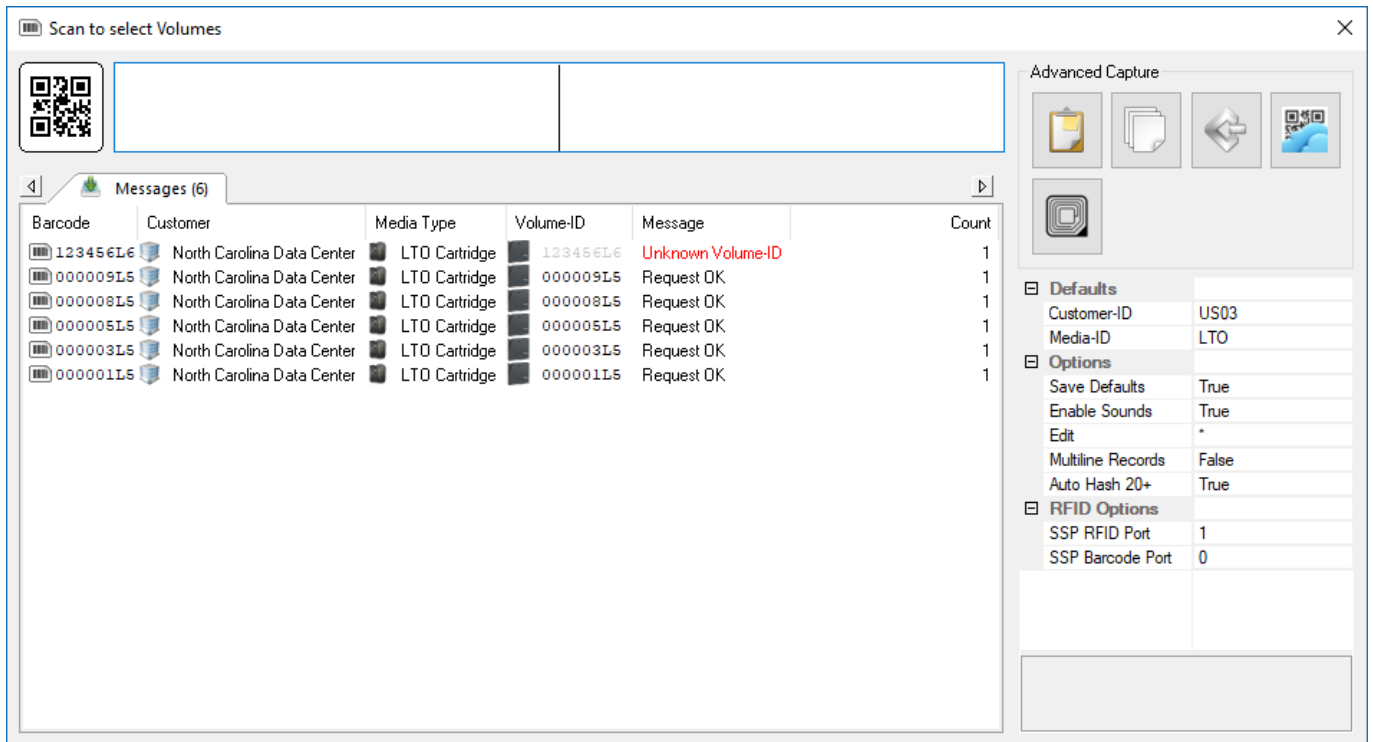
Scan to Select Volumes

Right-hand click in the Volume Window of TapeMaster.

Select Special Operations → Scan → Scan to Select.



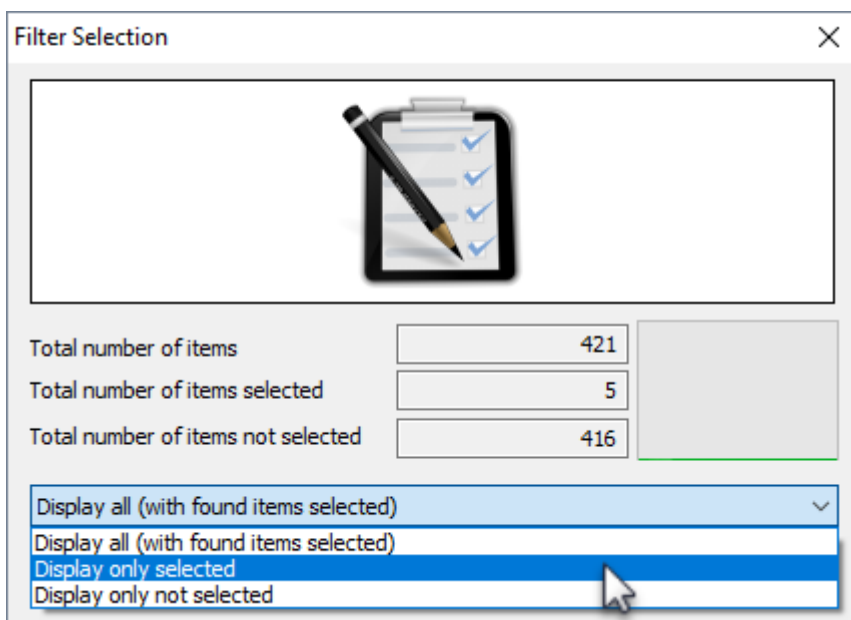
Scan the volumes, using your preferred [scanning method](#), you wish to select.



Exit from the Scan Window.

Use the drop-down in the results window select:

- Display All (with found items selected).
- Display Only Selected.
- Display Only Not Selected.



From: <https://rtfm.tapetrack.com/> - **TapeTrack Documentation**

Permanent link: <https://rtfm.tapetrack.com/master/scan-to-select-volumes?rev=1519600362>

Last update: **2025/01/21 22:07**



