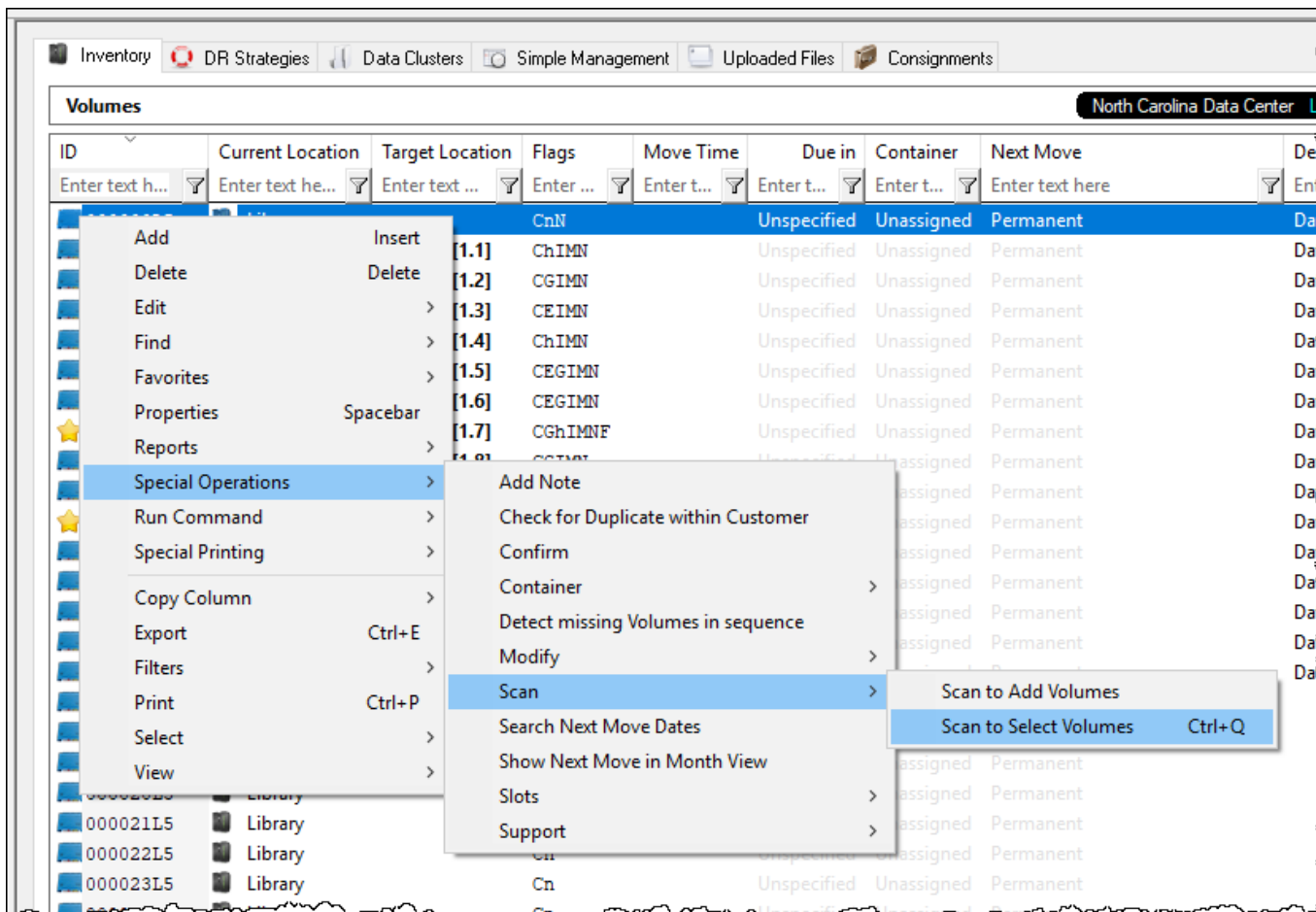


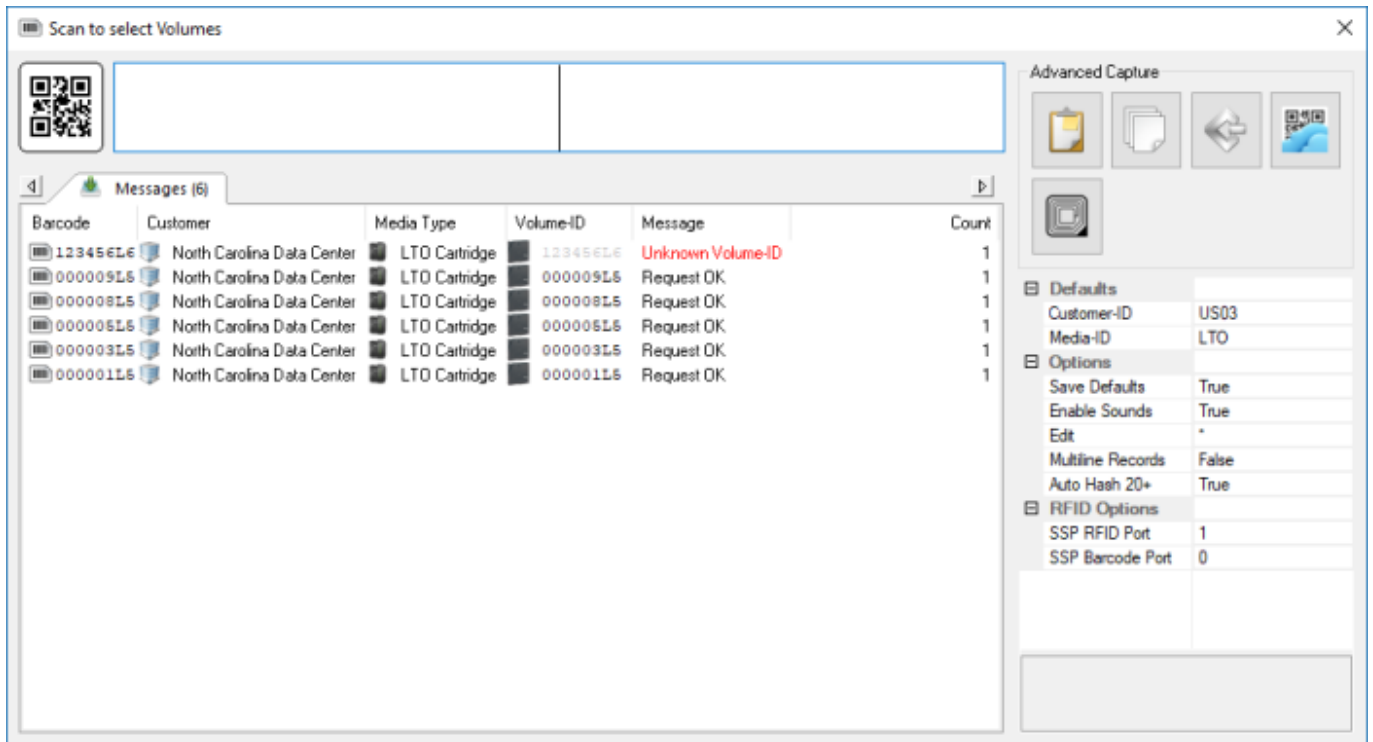
Scan to Select Volumes

Right-hand click in the Volume Window of TapeMaster.

Select Special Operations → Scan → Scan to Select Volumes.



Scan the **Volumes**, using your preferred **scanning method**, you wish to select.



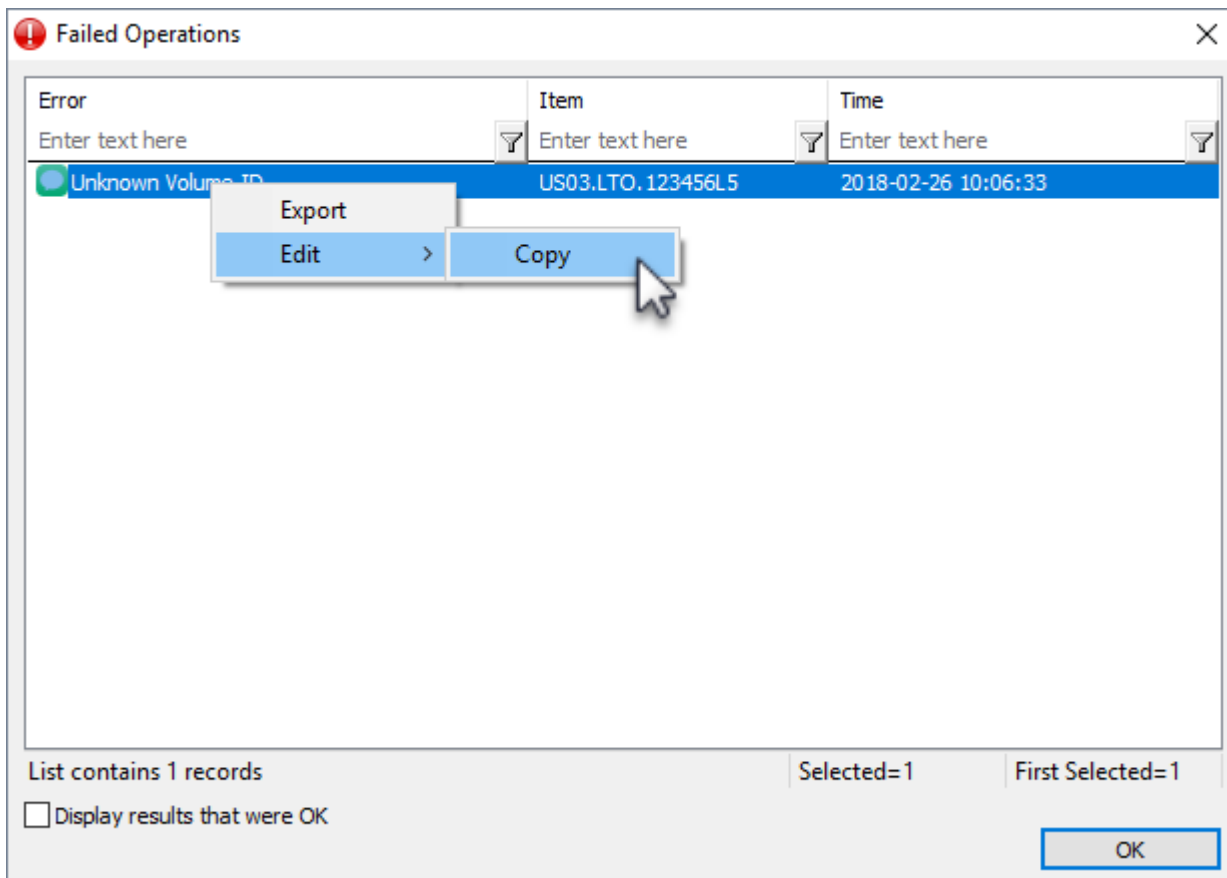
All **Volumes** present in the inventory will display **Request OK** in the scan window, any **Volumes** not present in the inventory will display **Unknown Volume-ID**.

Exit from the Scan Window by clicking the X at the top right.

If you have any scan errors, the **Failed Operations** window will display the unknown **Volumes**, as well as all successful scans if the **Display results that were OK** checkbox is checked. From this window you can:

- Copy **Volume-ID's** to clipboard.
- Export **Volume-ID's** to file.

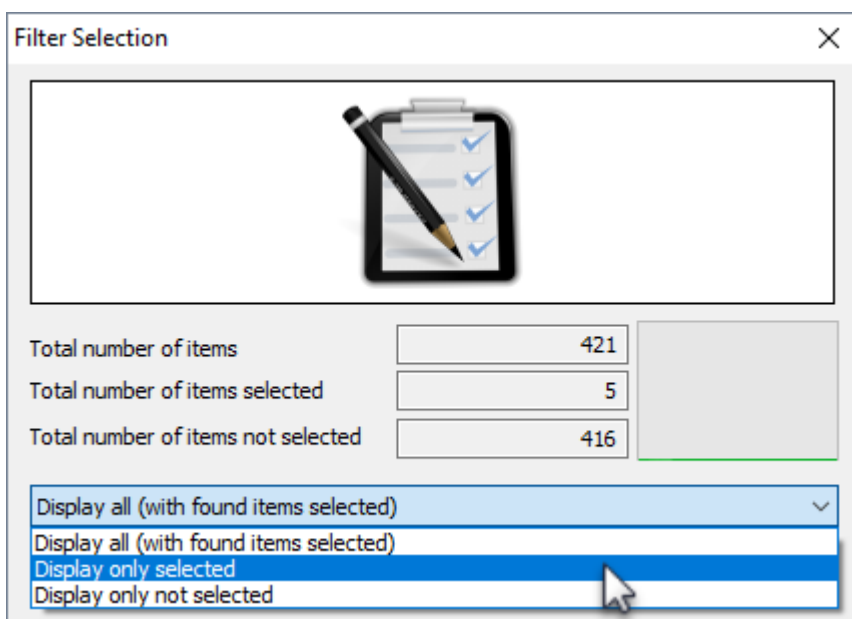
Exit Failed Operations window by clicking OK or X at the top right.



The **Filter Selection** window displays the total number of **Volumes** in the Inventory, the number of **Volumes** selected, the number of **Volumes** not selected and a graphical representation of these figures.

Use the drop-down in the results window select:

- Display all (with found items selected).
- Display only selected.
- Display only not selected.



The screenshot shows the 'Volumes' window in TapeTrack. The top navigation bar includes 'Inventory', 'DR Strategies', 'Data Clusters', 'Simple Management', 'Uploaded Files', and 'Consignments'. The 'Volumes' section has a search bar and a filter icon. The table below shows a filtered list of volumes.

| ID | Current Location | Target Location | Flags | Move Time | Due in | Container |
|----------|------------------------|-----------------|---------|-----------|-------------|------------|
| 000001L5 | Offsite Vault [000002] | | aChNOX | | Unspecified | US03.CONT. |
| 000003L5 | Offsite Vault [000030] | | CENOX | | Unspecified | Unassigned |
| 000005L5 | Offsite Vault [000006] | | CDEGNOX | | Unspecified | Unassigned |
| 000008L5 | Offsite Vault [000004] | | CDGNOX | | Unspecified | Unassigned |
| 000009L5 | Offsite Vault [000009] | | CDGNOX | | Unspecified | Unassigned |

When finished with the filtered results, clicking in the Inventory window and pressing F5 will refresh results back to full inventory display.

The screenshot shows the 'Volumes' window in TapeTrack after pressing F5. The table now displays the full inventory, including volumes that were previously filtered out. A mouse cursor is shown over an 'F5' button in the 'Target Location' column.

| ID | Current Location | Target Location | Flags | Move Time | Due in | Container |
|------------|------------------------|-----------------|----------|--------------|-------------|------------|
| 000000L5 | Offsite Vault [000001] | Library | CMnN | D5:21:02:39 | Unspecified | Unassigned |
| 000001L5 | Offsite Vault [000002] | | aChNOX | | Unspecified | US03.CONT. |
| ★ 000002L5 | Offsite Vault [000003] | Library | CGMnNF | D5:21:10:46 | Unspecified | US03.CONT. |
| 000003L5 | Offsite Vault [000030] | | CENOX | | Unspecified | Unassigned |
| ★ 000004L5 | Offsite Vault [000005] | | ChNOF | | Unspecified | Unassigned |
| 000005L5 | Offsite Vault [000006] | | CDEGNOX | | Unspecified | Unassigned |
| 000006L5 | Offsite Vault | | CDEGnNOX | | Unspecified | Unassigned |
| 000007L5 | Offsite Vault [000008] | Library | CGhMnN | D35:00:50:06 | Unspecified | Unassigned |
| 000008L5 | Offsite Vault [000004] | | CDGNOX | | Unspecified | Unassigned |
| 000009L5 | Offsite Vault [000009] | | CDGNOX | | Unspecified | Unassigned |
| 000010L5 | Offsite Vault | Library | CGhMnN | D5:21:07:02 | Unspecified | Unassigned |
| 000011L5 | Offsite Vault | | CDGhnNOX | | Unspecified | US03.CONT. |
| 000012L5 | Offsite Vault | | CDGhnNOX | | Unspecified | US03.CONT. |
| 000014L5 | Offsite Vault | | CDGhnNOX | | Unspecified | US03.CONT. |

From: <https://rtfm.tapetrack.com/> - **TapeTrack Documentation**

Permanent link: <https://rtfm.tapetrack.com/master/scan-to-select-volumes?rev=1553481136>

Last update: **2025/01/21 22:07**

