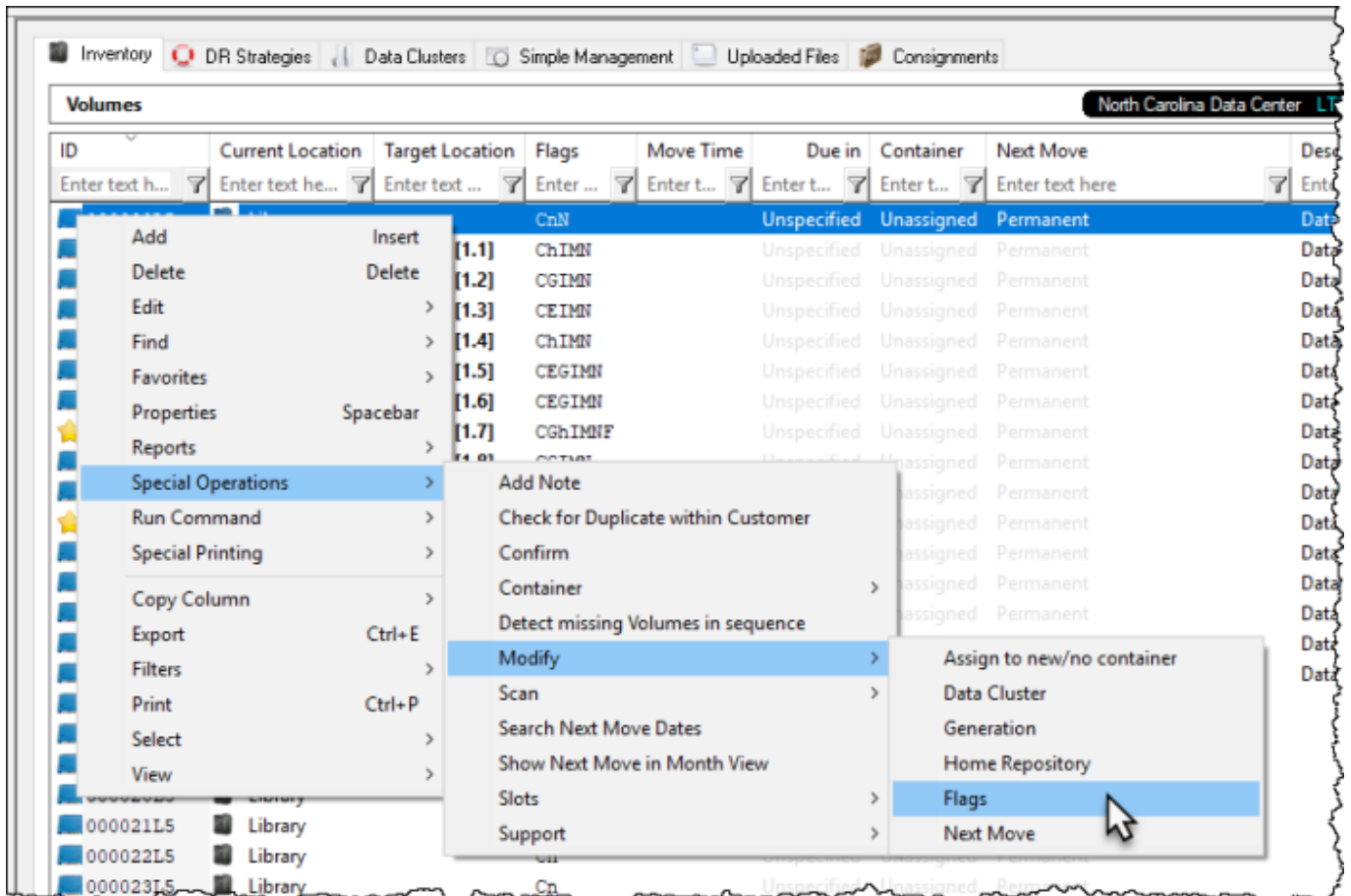
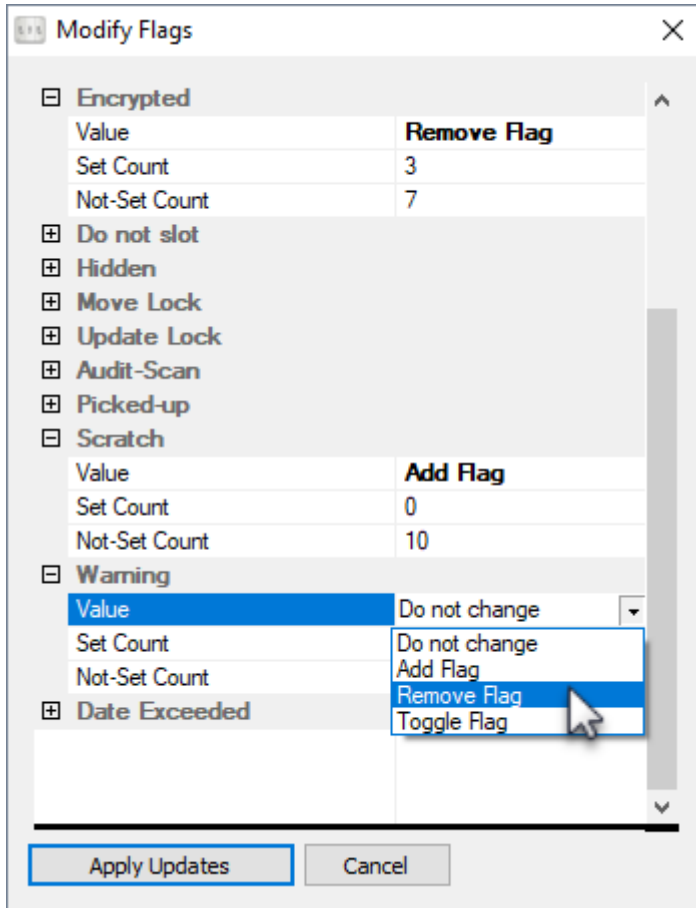


Modify Flags

To modify flags, select [Volume/s](#) from Inventory list, right click and select Special Operations → Modify → Flags to open the **Modify Flags** window.



Expand each Flag from the displayed list that you wish to modify and select Add, Remove or Toggle. Each Flag value will display how many [Volumes](#) (out of the selected ones) currently have (set count) or have not (non-set count) that flag applied.



Click Apply Updates to save and apply the changes.

From: <https://rtfm.tapetrack.com/> - **TapeTrack Documentation**

Permanent link: https://rtfm.tapetrack.com/master/set_volume_flags?rev=1553482974

Last update: **2025/01/21 22:07**

