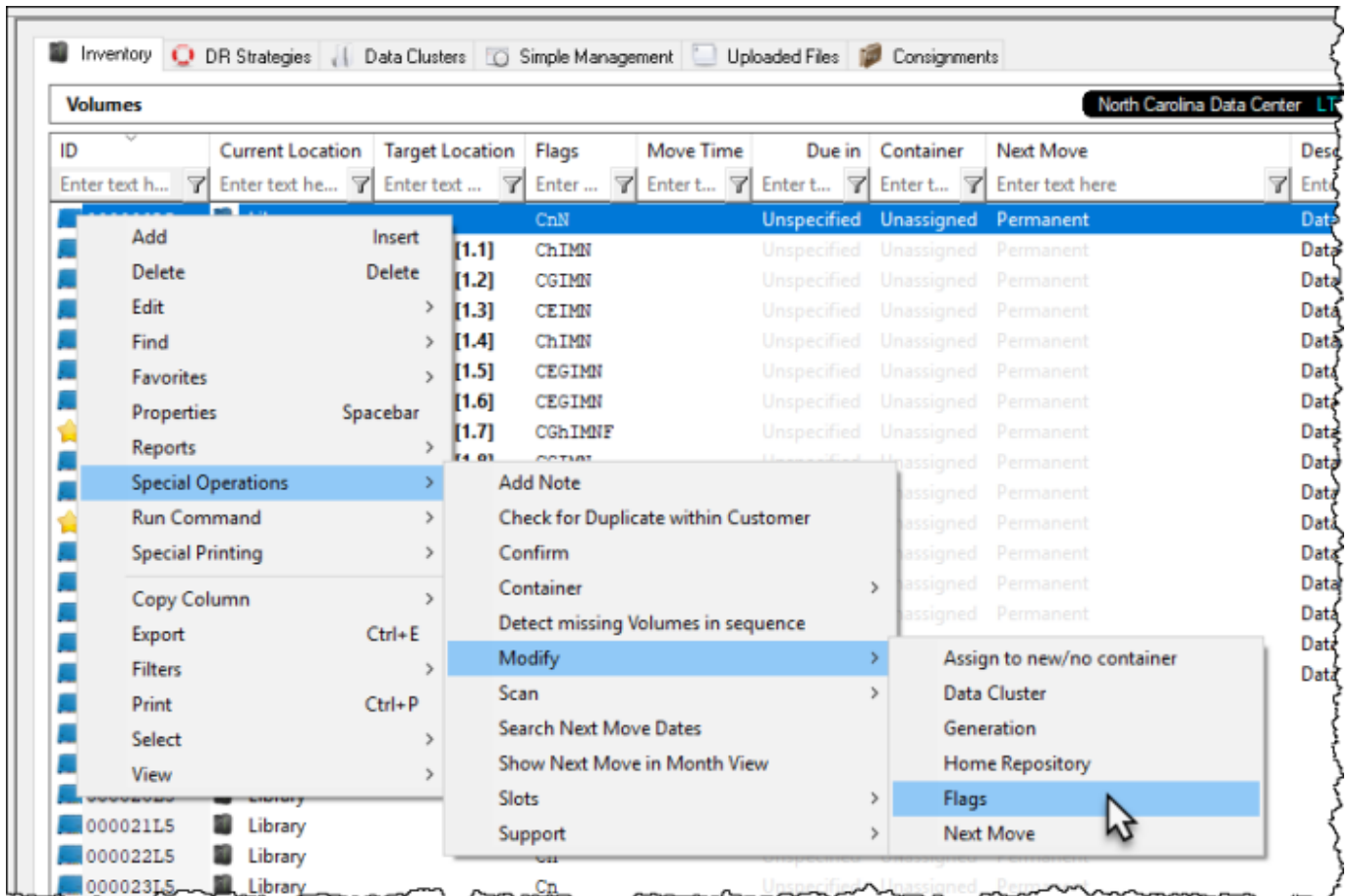
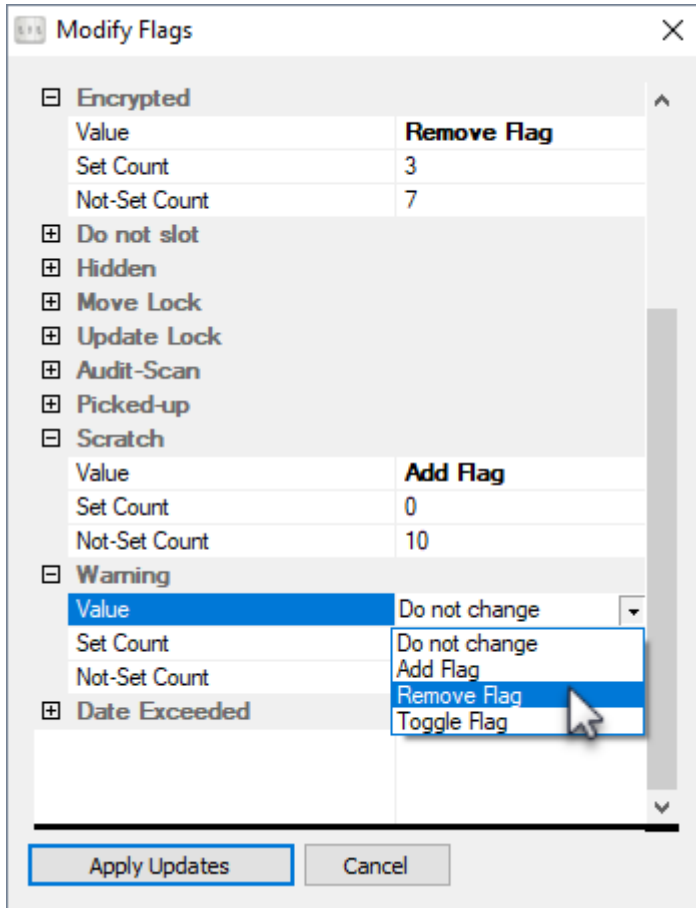


# Modify Flags

To modify **Flags**, select **Volume/s** from Inventory list, right click and select **Special Operations** → **Modify** → **Flags** to open the **Modify Flags** window.



Expand each **Flag** from the displayed list that you wish to modify and select **Add**, **Remove** or **Toggle**. Each **Flag** value will display how many **Volumes** (out of the selected ones) currently have (set count) or have not (non-set count) that **Flag** applied.



Click Apply Updates to save and apply the changes.

From: <https://rtfm.tapetrack.com/> - **TapeTrack Documentation**

Permanent link: [https://rtfm.tapetrack.com/master/set\\_volume\\_flags?rev=1554830589](https://rtfm.tapetrack.com/master/set_volume_flags?rev=1554830589)

Last update: **2025/01/21 22:07**

