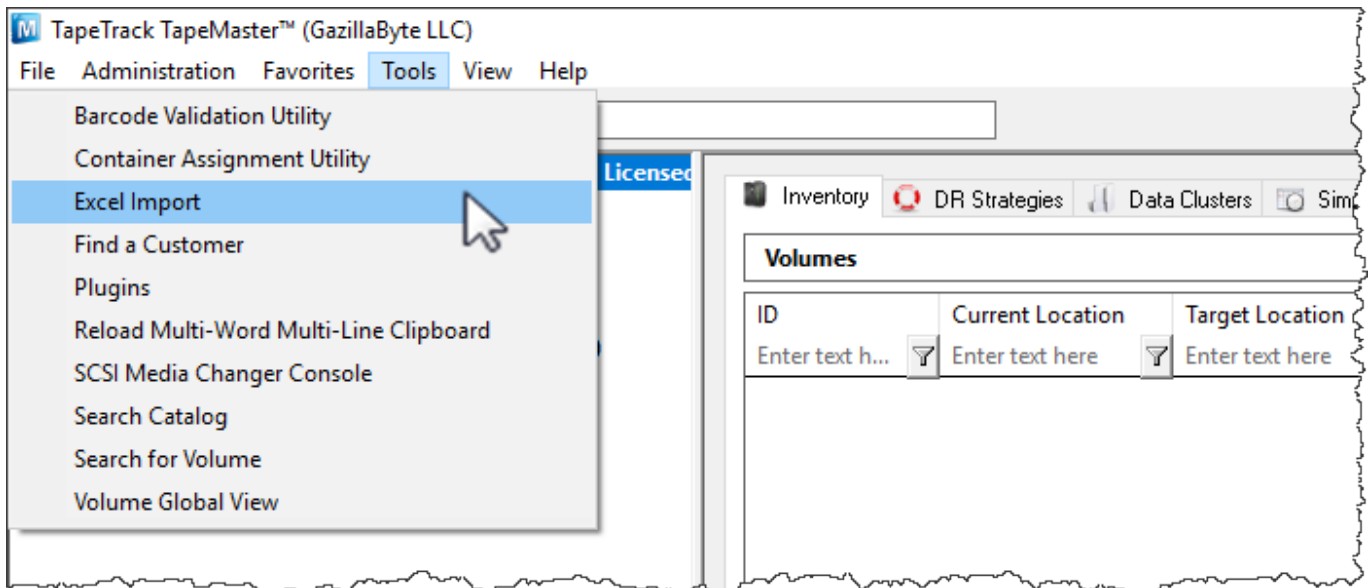


Excel Import

The Excel import task allows you to import volume data from an excel xls file by mapping the Excel values to TapeTrack Attributes.

Importing

From the Tools menu, select Excel Import.



Detailed information on how to use this function can be viewed in the [technotes section](#).

From:

<https://rtfm.tapetrack.com/> - **TapeTrack Documentation**

Permanent link:

https://rtfm.tapetrack.com/master/tools_excel_import

Last update: **2025/01/21 22:07**

