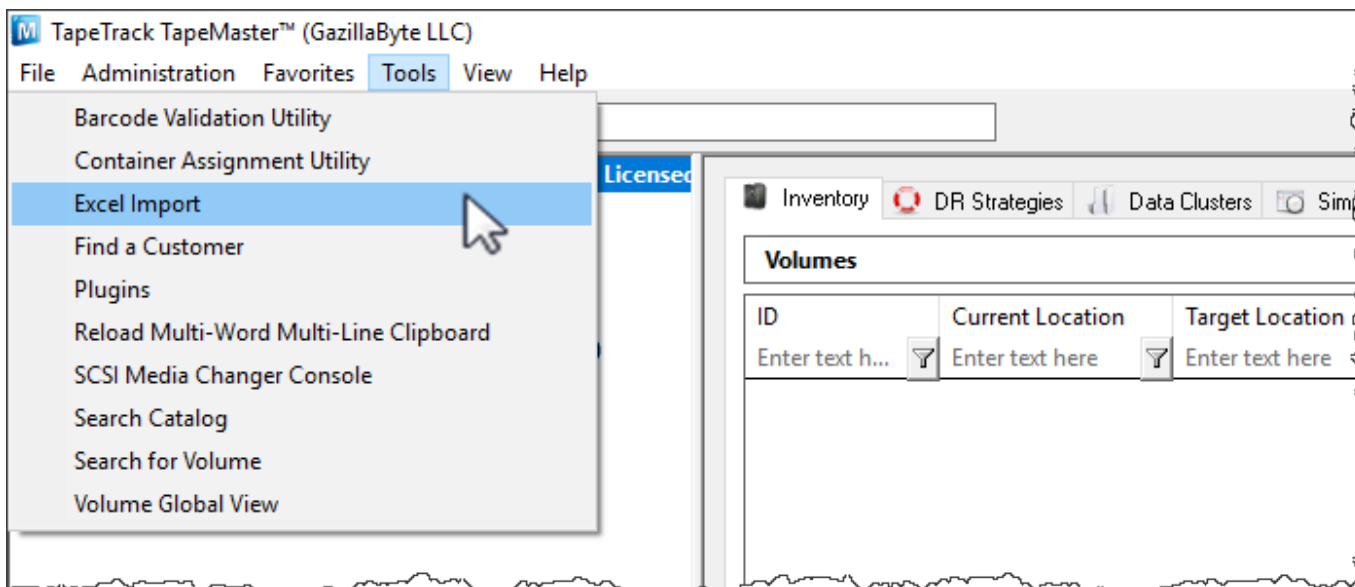


Excel Import

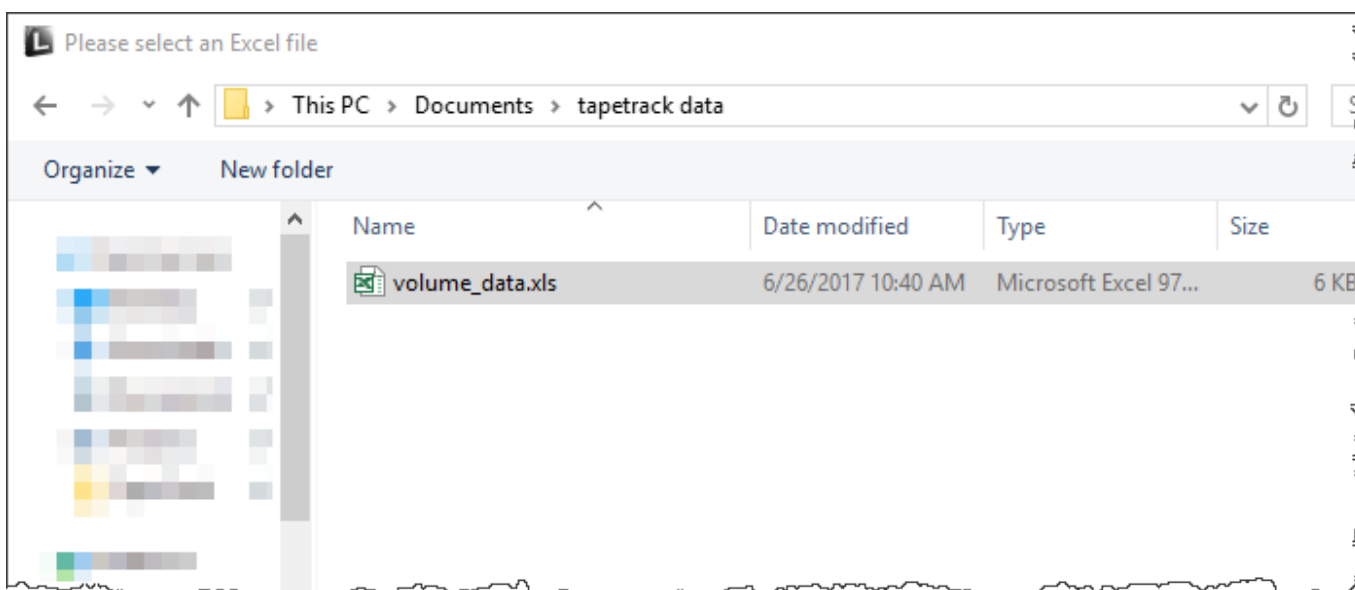
The Excel import task allows you to import volume data from an excel xls file by mapping the Excel values to TapeTrack attributes.

Importing

From the Tools menu, select Excel Import.



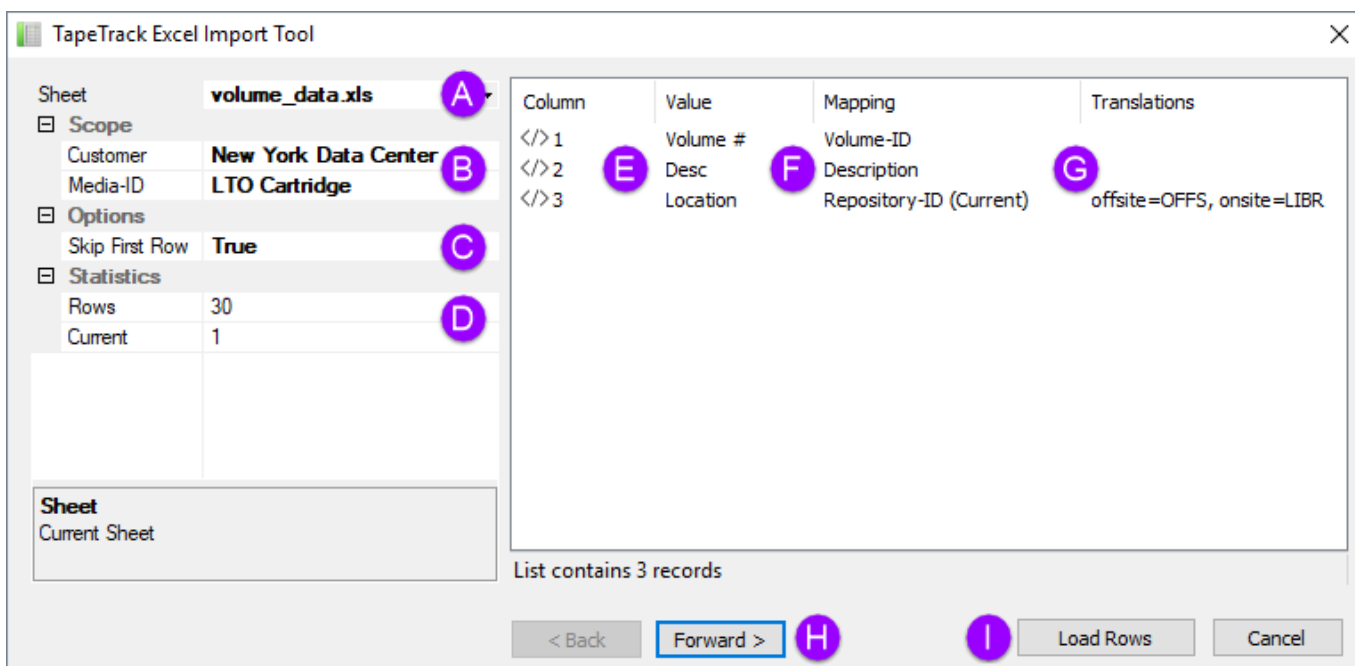
Select the Excel file to import the data from



In the TapeTrack Excel import tool:

- Select the Customer you wish to import the data into
- Select the Excel sheet to import the data from
- Select the Media type if the volumes all belong to one media type

- Set skip first row to true if there are headings presents.
- Map the excel columns to the TapeTrack attributes
- Insert any translations required to match the data to the correct format for TapeTrack



Notes

- **A** Excel .xls file being imported.
- **B** Customer and Media ID (Media ID can be mapped from Excel file or set here).
- **C** Skip first row if headings are present.
- **D** Excel sheet data.
- **E** Excel sheet column headings.
- **F** TapeMaster attributes.
- **G** Translations of Excel data to TapeMaster format (i.e. offsite to OFFS).
- **H** Forward and back buttons allow you to scroll through the Excel lines to check data input.
- **I** Load Excel data into import verification window.

Once all the data columns are mapped and any translations are required (press enter first if focus is still in translations field to update) click Load Rows to import data from the Excel sheet.

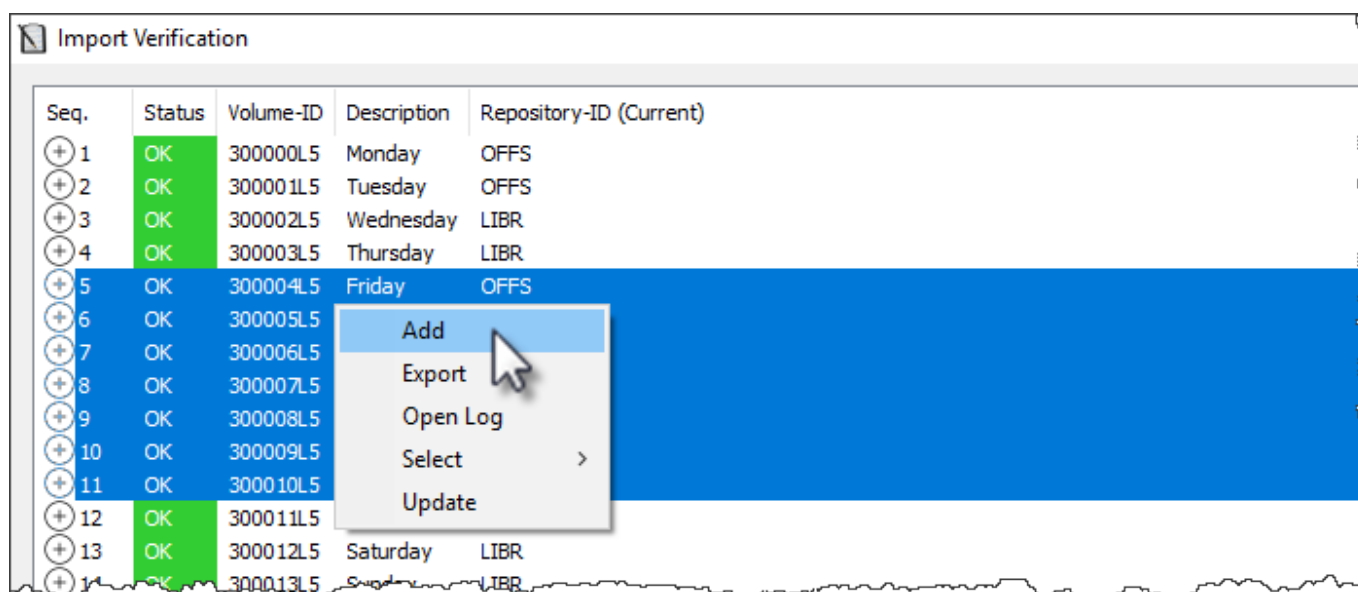
Seq.	Status	Volume-ID	Description	Repository-ID (Current)
1	OK	300000L5	Monday	OFFS
2	OK	300001L5	Tuesday	OFFS
3	OK	300002L5	Wednesday	LIBR
4	OK	300003L5	Thursday	LIBR
5	OK	300004L5	Friday	OFFS
6	OK	300005L5	Saturday	OFFS
7	OK	300006L5	Sunday	OFFS
8	OK	300007L5	Monday	LIBR
9	OK	300008L5	Tuesday	OFFS
10	OK	300009L5	Wednesday	OFFS
11	OK	300010L5	Thursday	OFFS
12	OK	300011L5	Friday	OFFS
13	OK	300012L5	Saturday	LIBR
14	OK	300013L5	Sunday	LIBR

In the window that opens select all volumes to add or update from the displayed list.

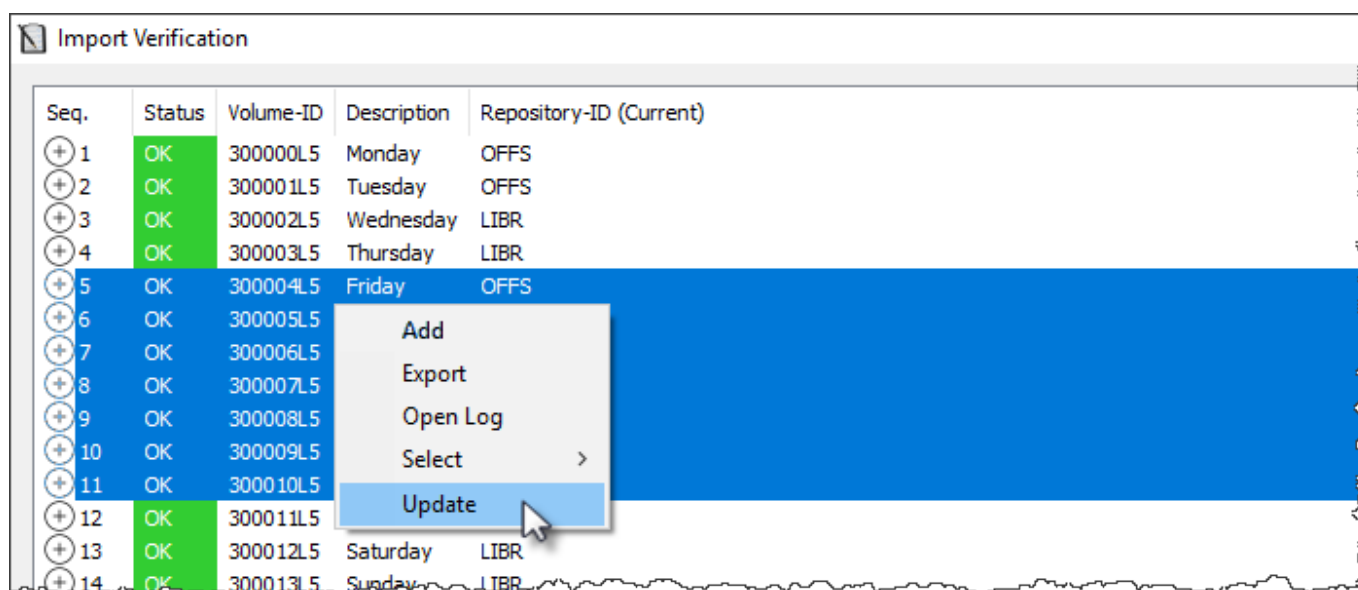
Select volumes from the list by

- left click for a single volume
- Shift + click to select a range of sequential volumes
- Control + click to select non sequential range
- Right click and from the menu select all

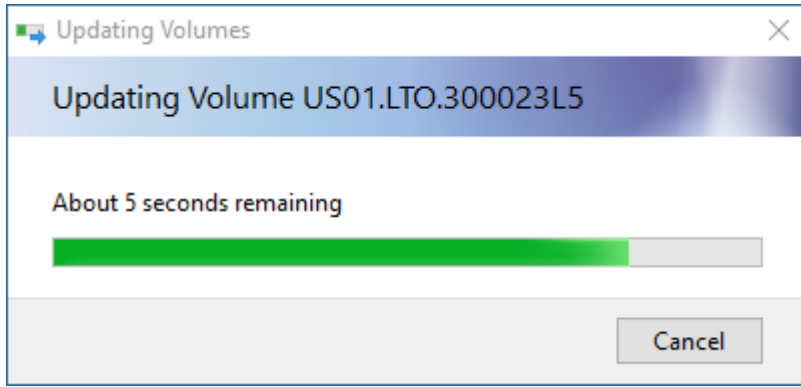
Any new volumes (not present in TapeTrack) will be highlighted by the volume ID's displayed in red. These volumes must be added to TapeTrack before any updates can be applied. To add the volumes, once selected, right click the volumes and from the popup menu select Add. Once the volumes have been added the volume ID's will now display in black.



To update the volumes attributes (description, repository, next move etc.) select the required volumes, right click and choose Update.



During the Add or Update phases you may see a popup showing you the progress of selected operation,



Once this has closed itself you may continue on with the next phase or close the import window if finished. Closing the import windows will return you to the start menu of TapeTrack Lite.

From:
<https://rtfm.tapetrack.com/> - **TapeTrack Documentation**

Permanent link:
https://rtfm.tapetrack.com/master/tools_excel_import?rev=1510243895

Last update: **2025/01/21 22:07**

