

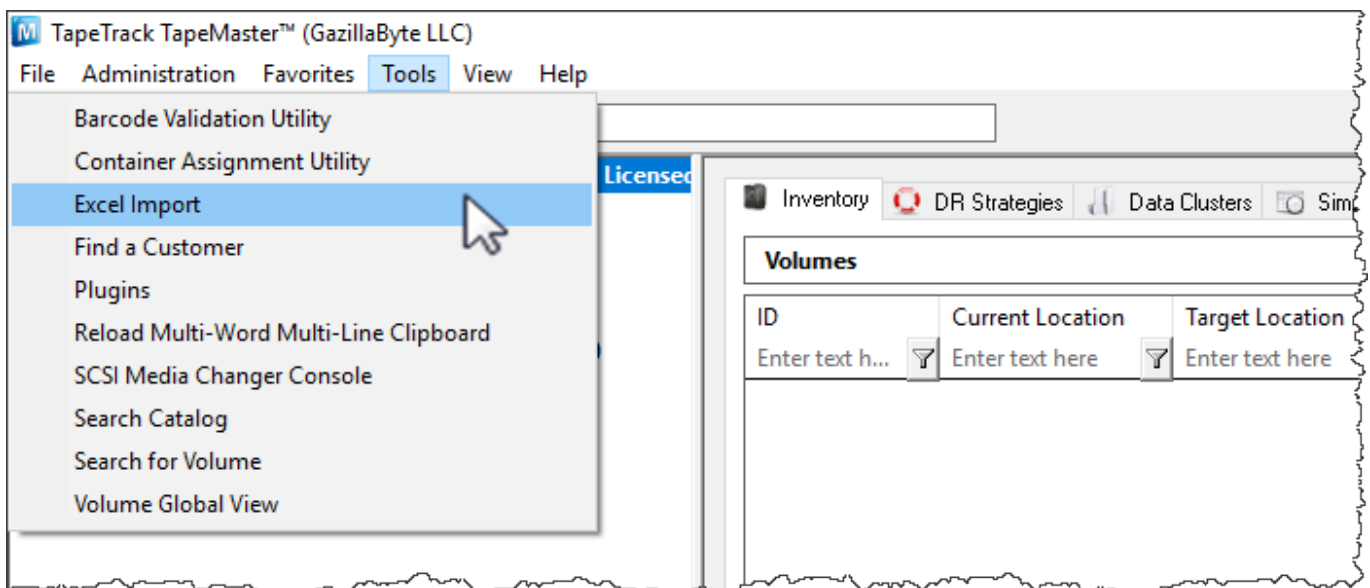
link data from TapeMaster and Lite

# Excel Import

The Excel import task allows you to import volume data from an excel xls file by mapping the Excel values to TapeTrack attributes.

## Importing

From the Tools menu, select Excel Import.



Once this has closed itself you may continue on with the next phase or close the import window if finished. Select X to close.

From:  
<https://rtfm.tapetrack.com/> - **TapeTrack Documentation**

Permanent link:  
[https://rtfm.tapetrack.com/master/tools\\_excel\\_import?rev=1540249272](https://rtfm.tapetrack.com/master/tools_excel_import?rev=1540249272)

Last update: **2025/01/21 22:07**

