

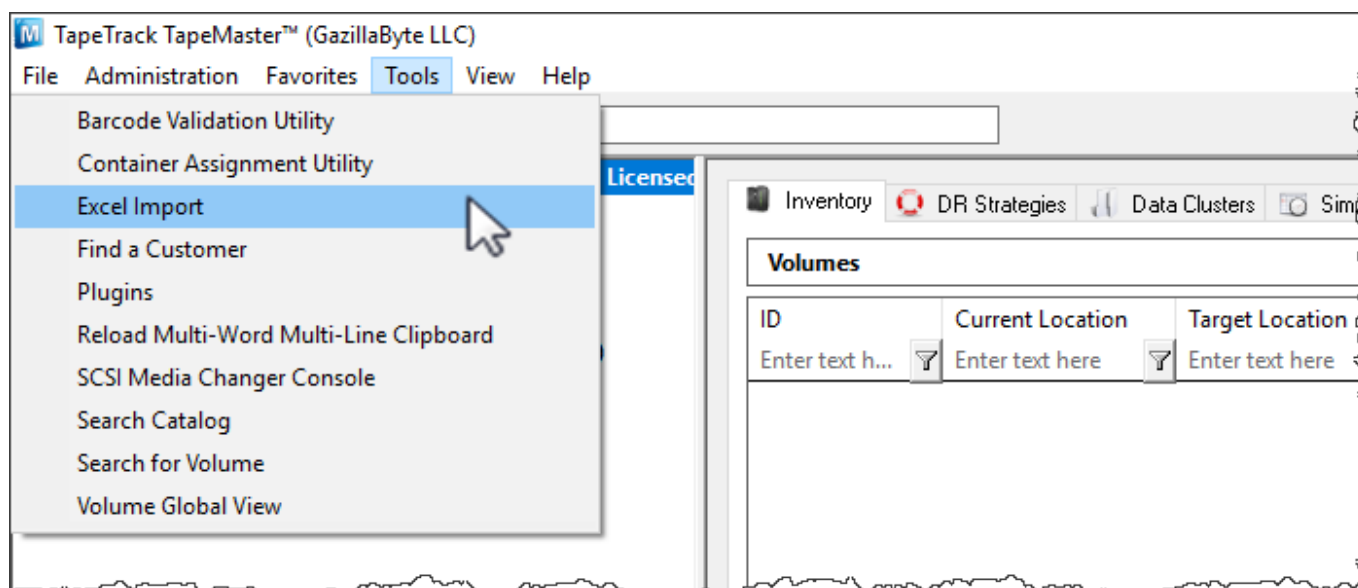
link data from TapeMaster and Lite

Excel Import

The Excel import task allows you to import volume data from an excel xls file by mapping the Excel values to TapeTrack attributes.

Importing

From the Tools menu, select Excel Import.



Once this has closed itself you may continue on with the next phase or close the import window if finished. Select X to close.

From:
<https://rtfm.tapetrack.com/> - **TapeTrack Documentation**

Permanent link:
https://rtfm.tapetrack.com/master/tools_excel_import?rev=1540249289

Last update: **2025/01/21 22:07**

