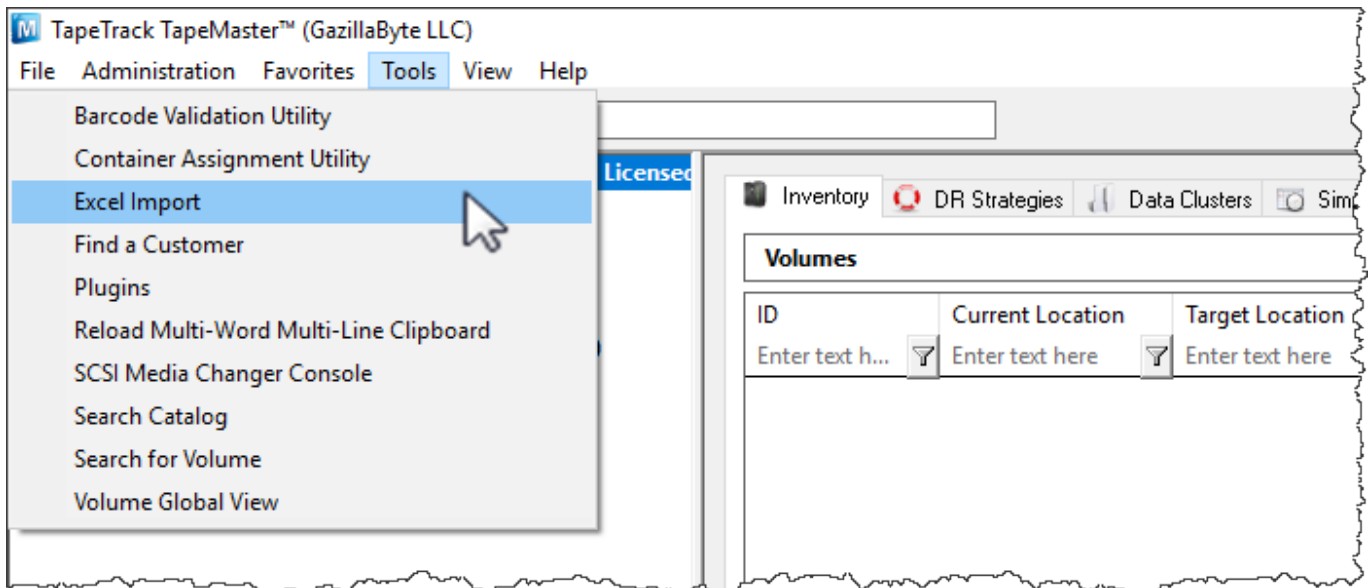


Excel Import

The Excel import task allows you to import volume data from an excel xls file by mapping the Excel values to TapeTrack attributes.

Importing

From the Tools menu, select Excel Import.



From:
<https://rtfm.tapetrack.com/> - **TapeTrack Documentation**

Permanent link:
https://rtfm.tapetrack.com/master/tools_excel_import?rev=1540429839

Last update: **2025/01/21 22:07**

