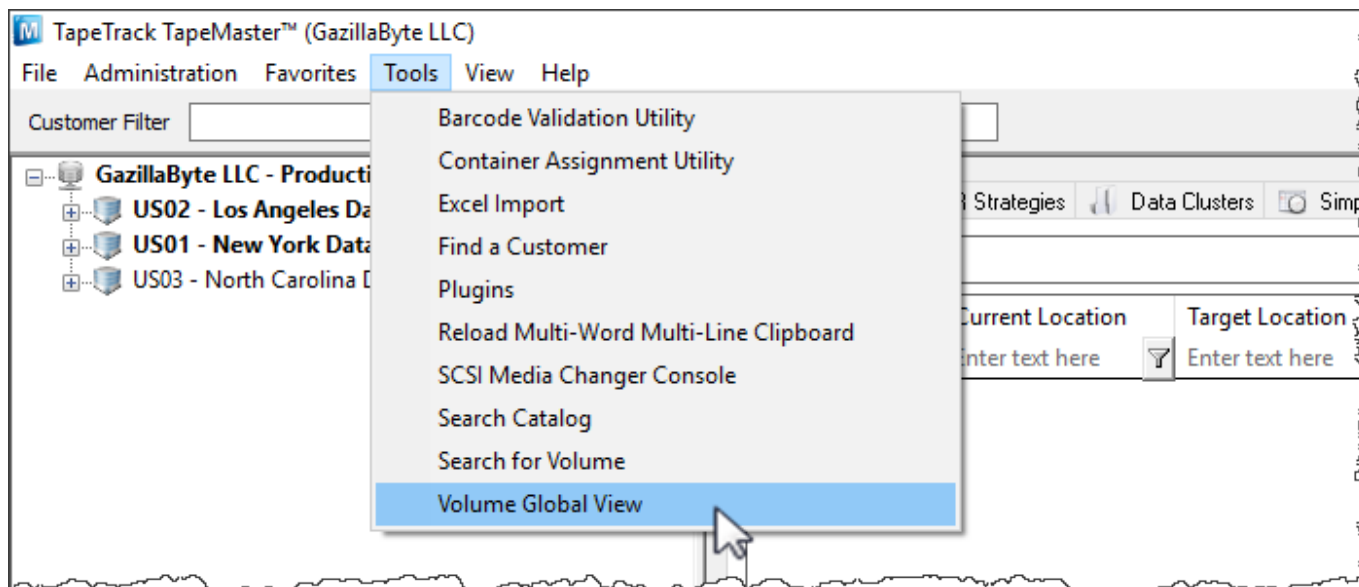


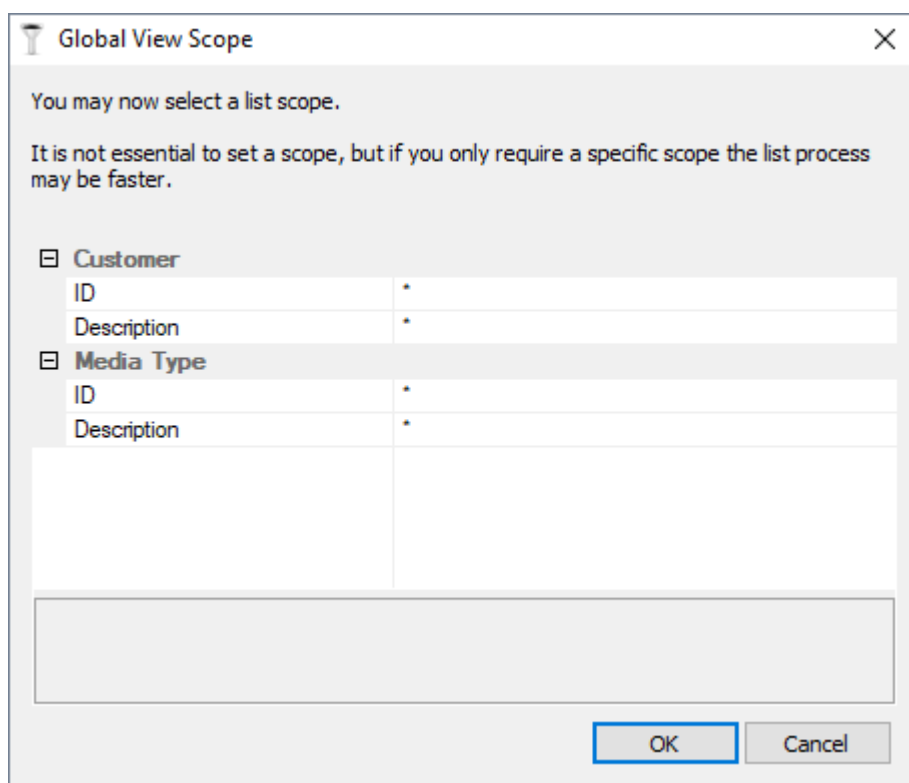
Volume Global View

Volume Global View allows you to view and/or search [volumes](#) across all [customers](#) and [media](#) types within the one report.

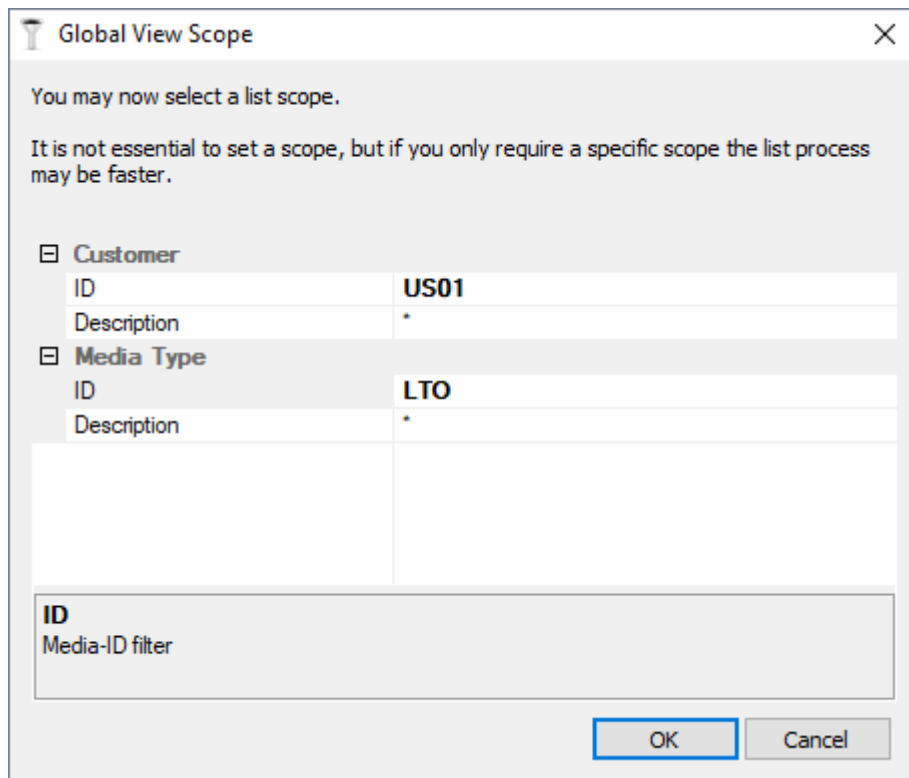
To open **Volume Global View** select from the main menu Tools → Volume Global View.



The **Global View Scope** window opens with wildcard (*) values for each search field by default which will include every volume within TapeTrack in the report.



The output results can be focused at this stage if a more refined report is preferred by using [String Filters](#) on the Customer ID or Description field and/or the Media ID or Description field.



Global View Scope

You may now select a list scope.

It is not essential to set a scope, but if you only require a specific scope the list process may be faster.

☒ **Customer**

ID	US01
Description	*

☒ **Media Type**

ID	LTO
Description	*

ID
Media-ID filter

OK Cancel

Click OK to continue to the **Volume Global View**.

The left of the window displays:

- **Statistics**

- Customer Total: Number of Customer ID's
- Media Type Total: Number of unique Media types (Each Customers LTO media type counted as one type).
- Repository Total: Number or unique Repositories (Each Customers OFFS repository type counted as one type).
- Volume Total: Number of volumes across all Customer ID's.

- **Customer Subtotals:** Total number of volumes per Customer ID.

- **Media Subtotals:** Volume subtotals grouped by Media type.

- **Repository Subtotals:** Volume subtotals grouped by Repository type.

The right of the widow displays the:

- Volume ID
- Description
- Customer ID
- Customer Description
- Media ID
- Media Description
- Repository ID
- Repository Description
- Flags
- Next Move Date
- Last Move Date
- Expiry Date
- Last Write Date

