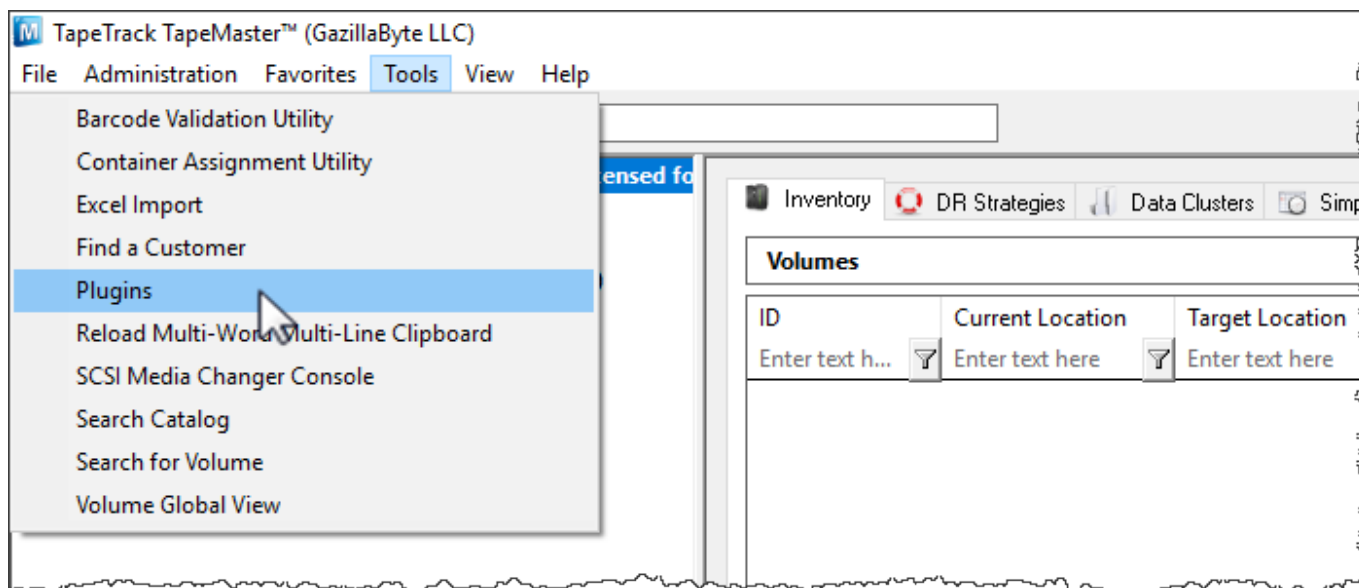


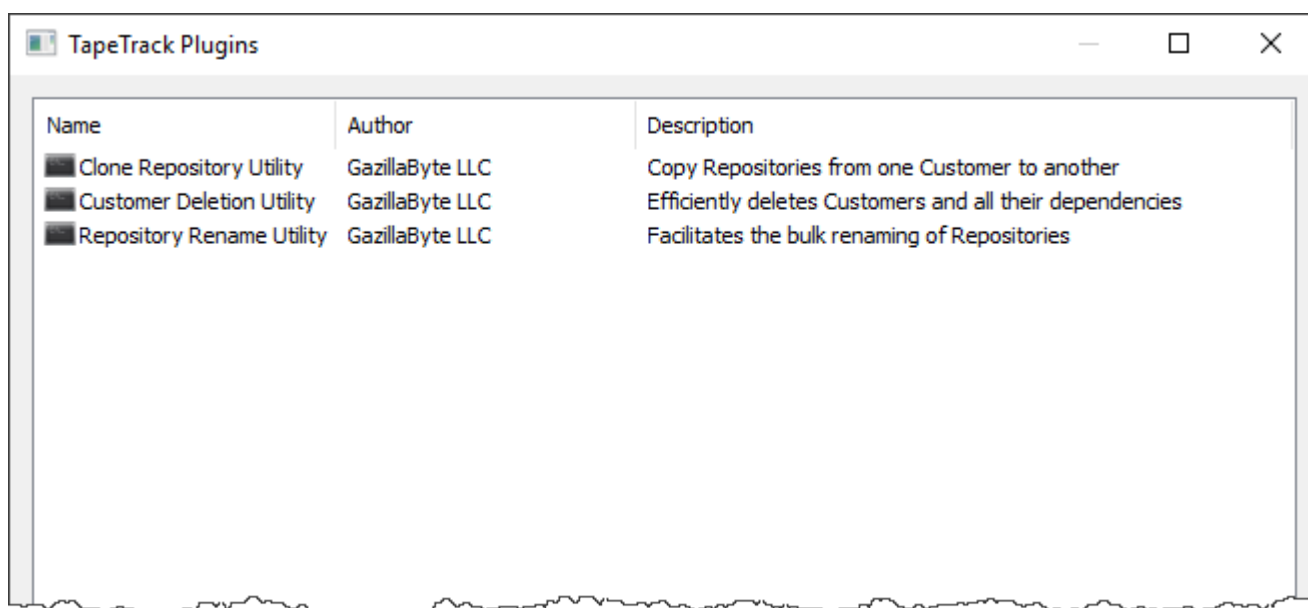
Plugins

The **Plugins** window under the Tools menu displays a list of plugins currently installed in TapeTrack. A user ID with tapemaster rights is required to access the Plugin tools.



There are three built-in plugins that come with each TapeMaster install. They are:

- [Clone Repository Utility](#): Duplicates a Repository for a Customer from another Customer.
- [Customer Deletion Utility](#): Will delete a Customer and all of the Media Types, Repositories, and Volumes.
- [Repository Rename Utility](#): Will change a Repository-ID and move all Volumes from the old Repository-ID to the new one.



To run a plugin, double-click it.

Clone Repository Utility

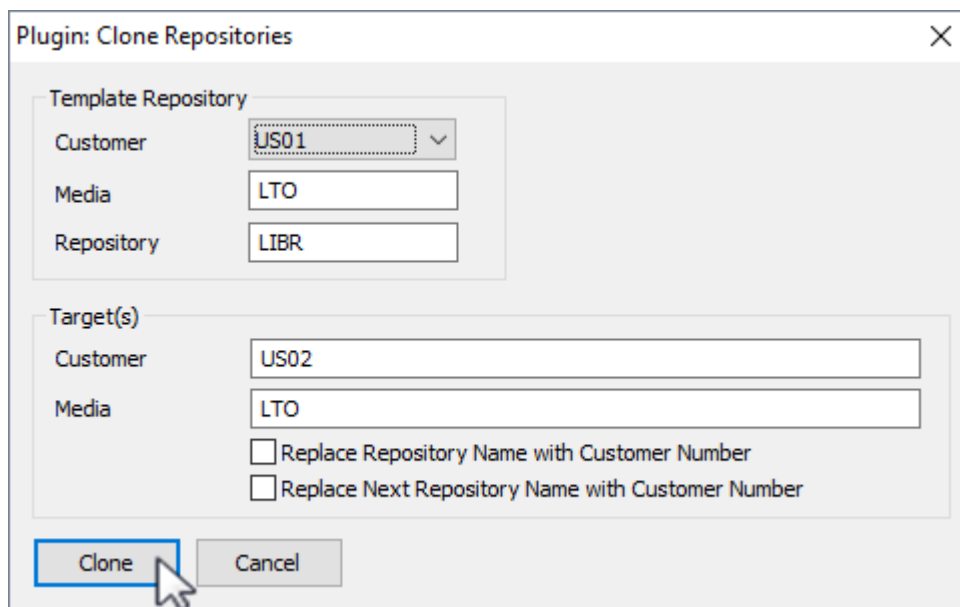
Duplicates a Repository and puts it in another Customer.

Template Repository

- **Customer:** Enter the Customer you want to clone the Repository from.
- **Media:** Enter the Media type to duplicate.
- **Repository:** Enter the Repository-ID.

Target(s)

- **Customer:** Enter the Customer you want to clone the Repository to.
- **Media:** Enter the Media type that will be duplicated.



Plugin: Clone Repositories

Template Repository

Customer: US01

Media: LTO

Repository: LIBR

Target(s)

Customer: US02

Media: LTO

☐ Replace Repository Name with Customer Number

☐ Replace Next Repository Name with Customer Number

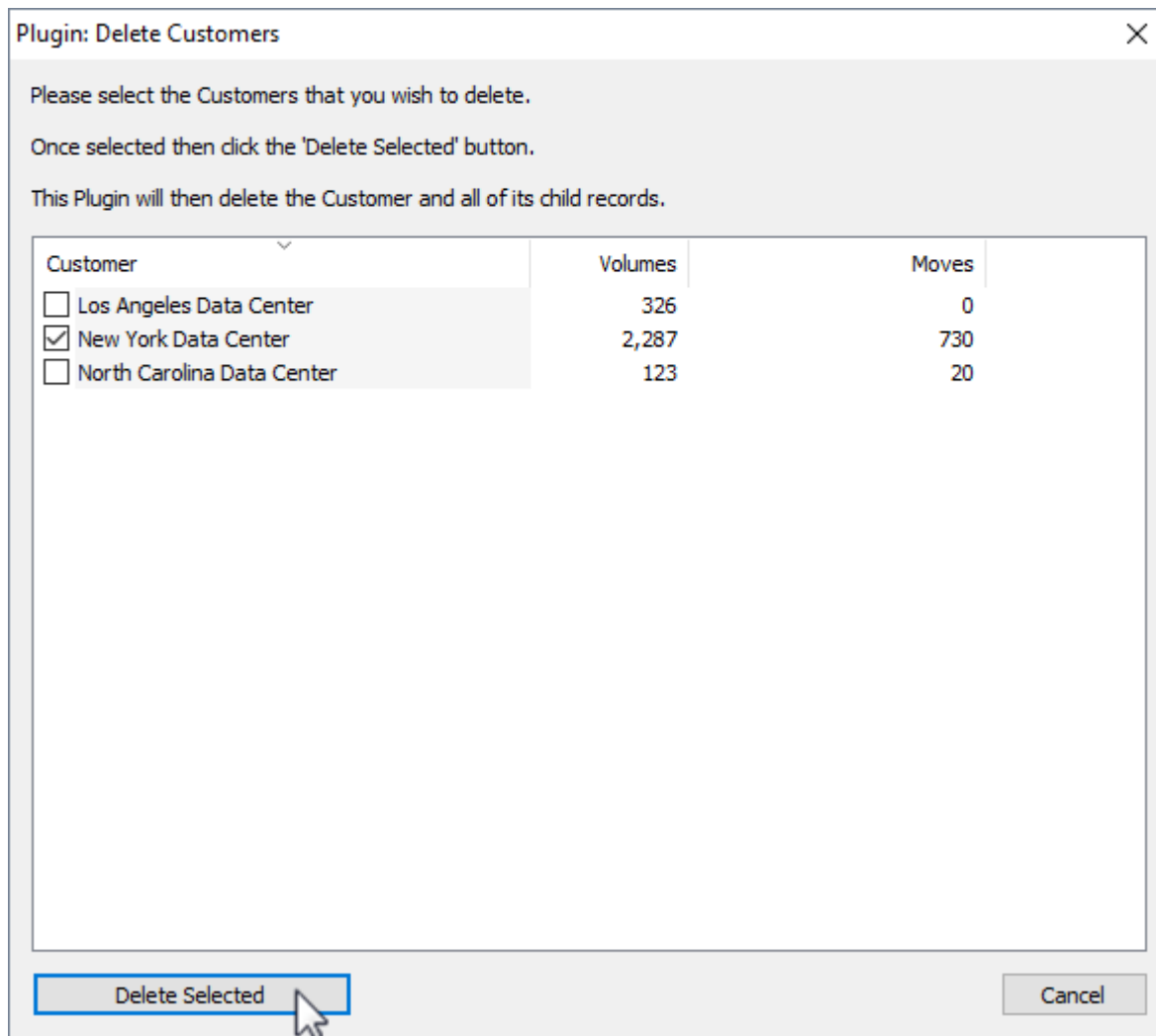
Clone Cancel

When you have finished filling in the details click Clone to complete.

Customer Deletion Utility

The Customer Deletion Utility will delete the selected Customer along with all its dependencies.

Select the required customer/s you want to delete via the checkboxes and click Delete Selected and Yes on the conformation popup.



Repository Rename Utility

The Repository Rename Utility will change a Repository-ID and move all Volumes from the old Repository-ID to the new one.

Plugin: Rename Repository

This Plugin will allow you to rename an existing Repository by:

(1) Creating a new Repository with the same attributes as the old

(2) Moving all Volumes from the old Repository to the new

(3) Optionally deleting the old Repository.

Property	Value
Customer-ID Filter	US01
Media-ID Filter	LTO
Source Repository-ID	LIB
Target Repository-ID	LIBR
Output Log Folder	C:\Program Files\TapeTrack
Delete Source Repository	True
Move Volumes to Target	True
Rename NEXT Repository	True

Rename

Cancel

When you have finished filling in the details click Rename and Yes on the conformation popup to complete.

From:
<https://rtfm.tapetrack.com/> - TapeTrack Documentation

Permanent link:
https://rtfm.tapetrack.com/master/tools_plugins?rev=1506049257

Last update: 2025/01/21 22:07

