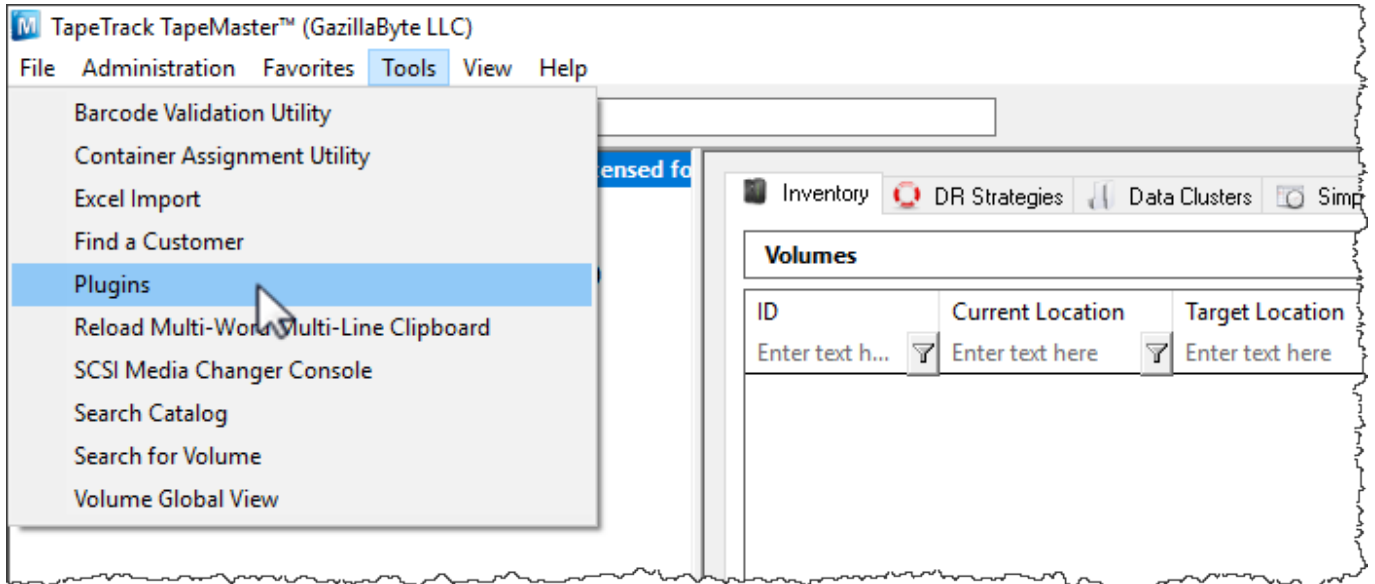


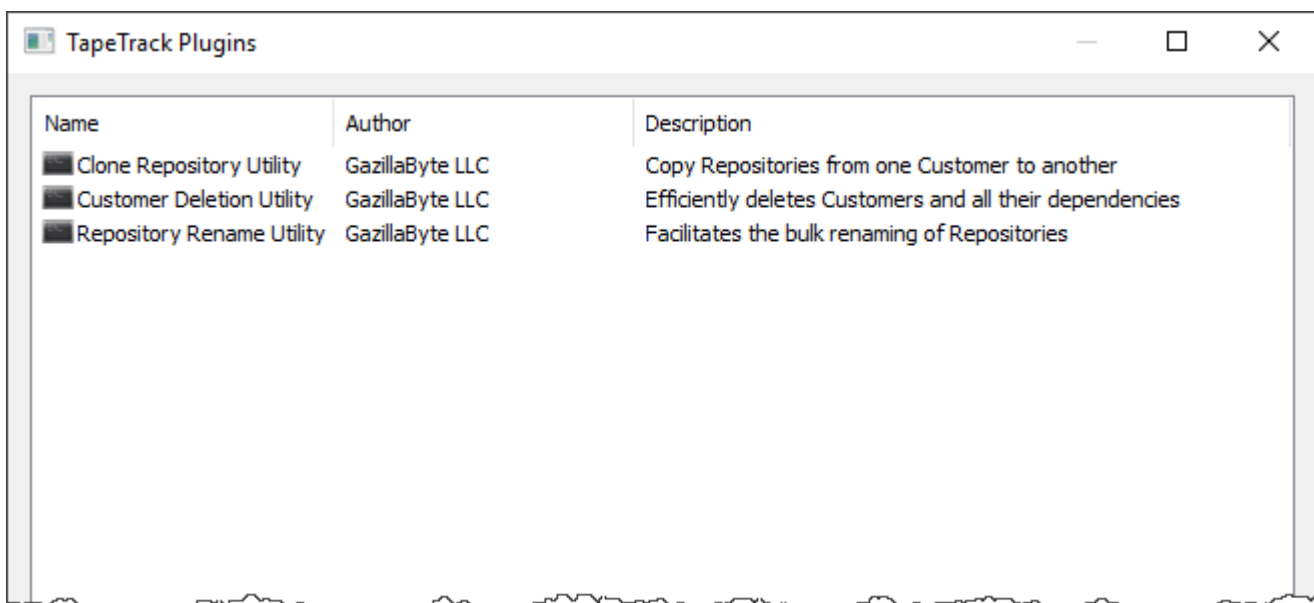
# Plugins

The **Plugins** window under the **Tools** menu displays a list of plugins currently installed in TapeTrack. A User-ID with tapemaster rights is required to access the Plugin tools.



There are three built-in plugins that come with each TapeMaster install. They are:

- [Clone Repository Utility](#): Duplicates a Repository for a Customer from another Customer.
- [Customer Deletion Utility](#): Will delete a Customer and all of the Media Types, Repositories, and Volumes.
- [Repository Rename Utility](#): Will change a Repository-ID and move all Volumes from the old Repository-ID to the new one.



To run a plugin, double-click it.

## Clone Repository Utility

Duplicates a Repository and puts it in another Customer.

### Template Repository

- **Customer:** Enter the Customer you want to clone the Repository from.
- **Media:** Enter the Media type to duplicate.
- **Repository:** Enter the Repository-ID.

### Target(s)

- **Customer:** Enter the Customer you want to clone the Repository to.
- **Media:** Enter the Media type that will be duplicated.

Plugin: Clone Repositories

Template Repository

Customer: US01

Media: LTO

Repository: LIBR

Target(s)

Customer: US02

Media: LTO

Replace Repository Name with Customer Number

Replace Next Repository Name with Customer Number

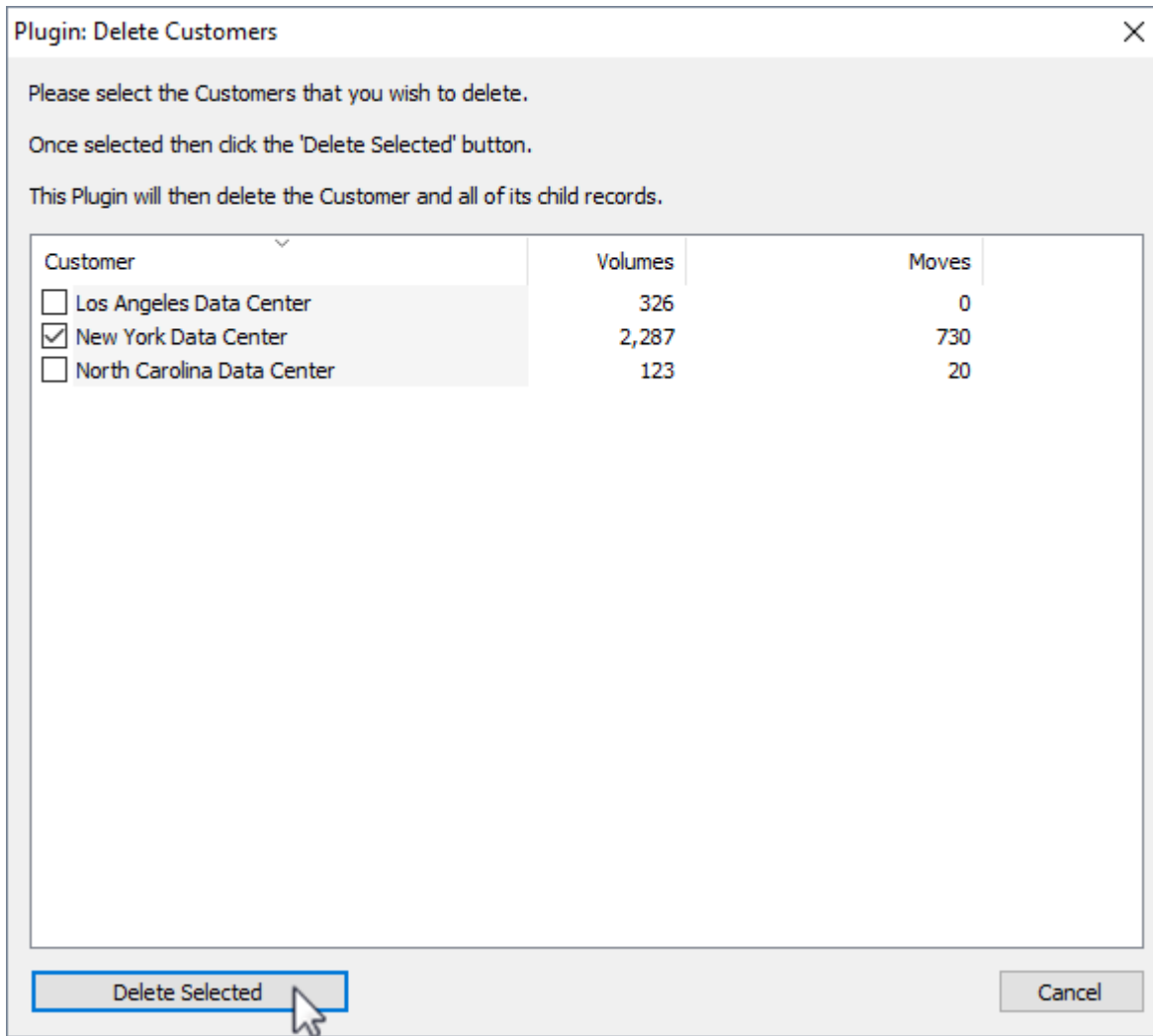
Clone Cancel

When you have finished filling in the details click Clone to complete.

## Customer Deletion Utility

The Customer Deletion Utility will delete the selected Customer along with all its dependencies.

Select the required customer/s you want to delete via the checkboxes and click Delete Selected and Yes on the confirmation popup.



## Repository Rename Utility

The Repository Rename Utility will change a Repository-ID and move all Volumes from the old Repository-ID to the new one.

**Plugin: Rename Repository**

This Plugin will allow you to rename an existing Repository by:

- (1) Creating a new Repository with the same attributes as the old
- (2) Moving all Volumes from the old Repository to the new
- (3) Optionally deleting the old Repository.

Property	Value
Customer-ID Filter	<b>US01</b>
Media-ID Filter	<b>LTO</b>
Source Repository-ID	<b>LIB</b>
Target Repository-ID	<b>LIBR</b>
Output Log Folder	<b>C:\Program Files\TapeTrack</b>
Delete Source Repository	<b>True</b>
Move Volumes to Target	<b>True</b>
Rename NEXT Repository	<b>True</b>

When you have finished filling in the details click Rename and Yes on the confirmation popup to complete.

From: <https://rtfm.tapetrack.com/> - **TapeTrack Documentation**

Permanent link: [https://rtfm.tapetrack.com/master/tools\\_plugins?rev=1625015679](https://rtfm.tapetrack.com/master/tools_plugins?rev=1625015679)

Last update: **2025/01/21 22:07**

