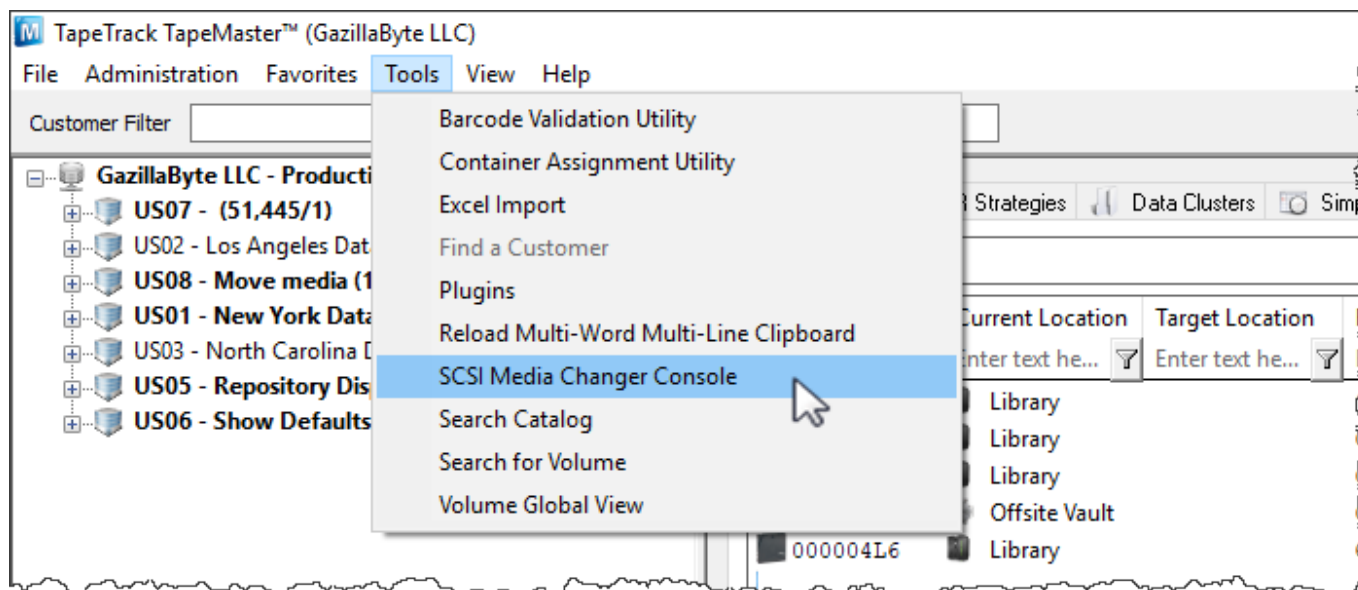


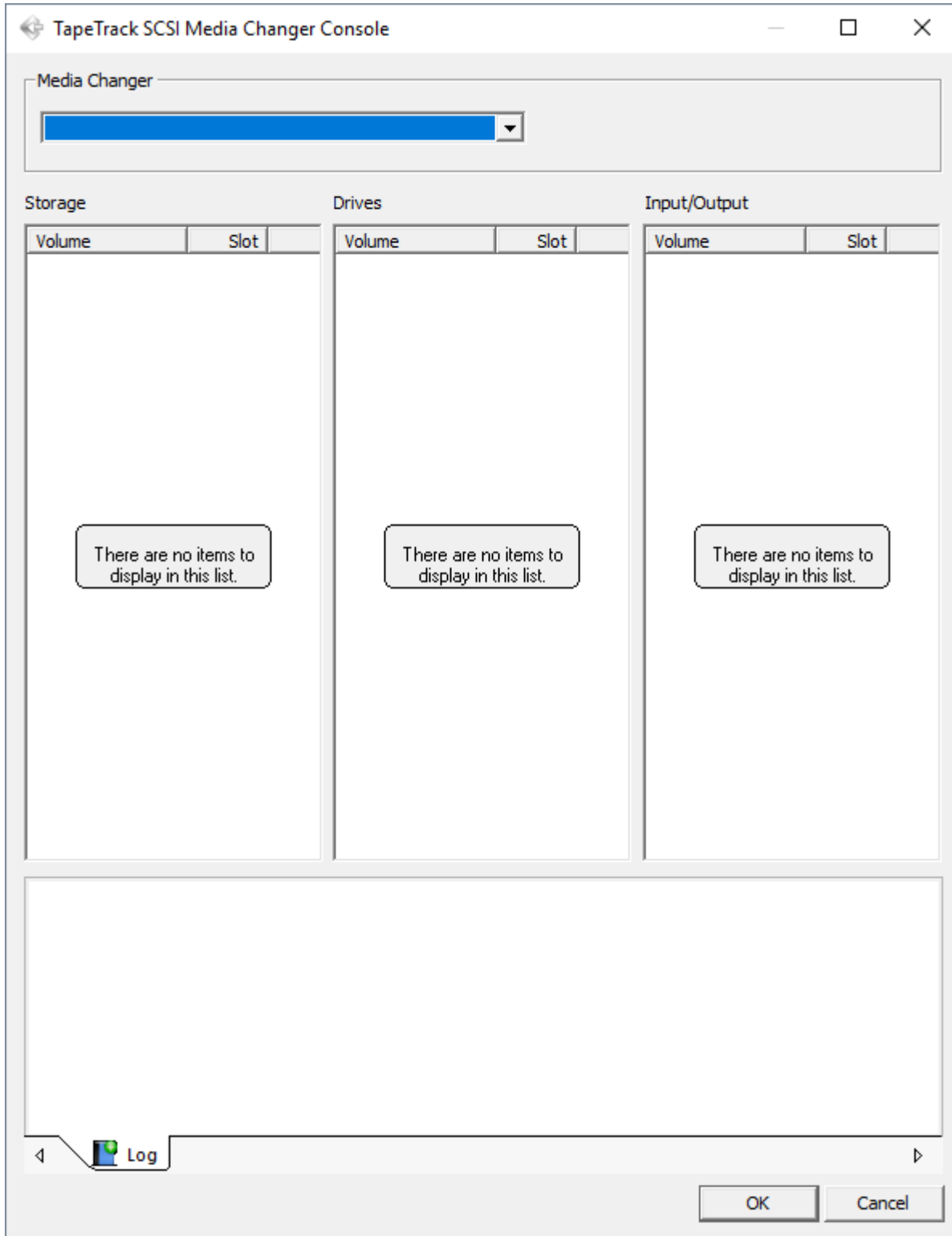
# SCSI Media Changer Console

To open the SCSI Media Changer Console window select, from the main menu, Tools → SCSI Media Changer Console.



Click Yes to the popup warning to assign the privileges required for the SCSI connection.

From the console window select the SCSI Media Changer Console to connect to.



From: <https://rtfm.tapetrack.com/> - **TapeTrack Documentation**

Permanent link: [https://rtfm.tapetrack.com/master/tools\\_scsi\\_console](https://rtfm.tapetrack.com/master/tools_scsi_console)

Last update: **2025/01/21 22:07**

