

Adding and Updating User Information

To be able to login to a TapeTrack Framework Server, you must have a [User-ID](#) and password.

This section describes how to add a new User-ID and set attributes for that User-ID.

Group/User Administration

On the Administration drop-down menu in TapeTrack TapeMaster select Group/User Administration.



To add a new User, right-click in the white space on the User Administration screen and select Add.



To update an existing User, double-click on that User or right-click and select Properties.

The Add New User window will display three tabs:

- [Identity](#)
- [IP Ranges](#)
- [Access](#)

Identity

The screenshot shows the 'Add New User' dialog box with the following fields and values:

Section	Field	Value
Identity	ID	
	Name	
Group	ID	
Options	Administrative rights	False
	Scan-In Only	False
	Disabled	False
	No Scanner	False
	No Time-Out	False
	tapemaster rights	False
	Allow access inheritance	False
	Certify	False
	AD Domain	
	Require AD Group	False
Client Access	TapeMaster	True
	Lite	True
	Checkpoint	False
	Sync	True
Details	Email Address	
	Description	
Defaults	Customer-ID	<No Selection>

The Identity tab provides fields to update the:

- **Identity**
 - **User-ID:** The User ID will be the user name that the user uses to login to TapeTrack products.
 - **Name:** The name is the User's desired display name.
- **Group**
 - **Group ID:** Select group to assign user to from the drop-down list or [add new group](#).
- **Options**
 - **Administrative rights:** When set to True the User will have Administration Rights with Server Administrator privileges or the ability to Add/Delete Customers and Media Types.
 - **Scan-In Only:** When set to True the User will only be able to Scan tapes into the system.
 - **Disabled:** When set to True the User's access will be in a disabled status, so that they are not able to access any TapeTrack products. This does not delete the User.
 - **No Scanner:** When set to True the Barcode Scanning Window will provide an auto-complete drop-down.

- **No Time-Out:** By default, all User's are logged out of TapeMaster after ten minutes of inactivity. Setting this to True, the selected User will not time out.
- **tapemaster rights:** When set to True, it allows the User to gain the same administrative rights as the tapemaster superuser account.
- **Certify:** Assigns the ability to [generate certificates](#).
- **AD Domain:** This is required if the User logs on to TapeTrack with their Active Directory Username and Password.
- **Require AD Group:** When set to True, the User must use their [Active Directory](#) credentials.
- **Client Access**
 - **TapeMaster:** Authorizes User-ID access to TapeMaster
 - **Lite:** Authorizes User-ID access to Lite
 - **Checkpoint:** Authorizes User-ID access to Checkpoint
 - **Sync:** Authorizes User-ID access to Sync software.
- **Details**
 - **Email Address:** Allows inclusion of user email, which may be used instead of username to log into TapeTrack directly (ie not using Active Directory)
 - **Description:** Add description to User-ID.
- **Defaults**
 - **Customer-ID:** Sets Customer-ID for User in Scan-In window. Once Customer-ID is set, Media-ID field will be displayed.
 - **Media-ID:** Sets Media-ID for User in Scan-In window.



If using windows Active Domain to log into TapeTrack, the username must match your AD username

IP Ranges

The IP Ranges tab sets restrictions on which IP addresses a User can access the TapeTrack Server from.

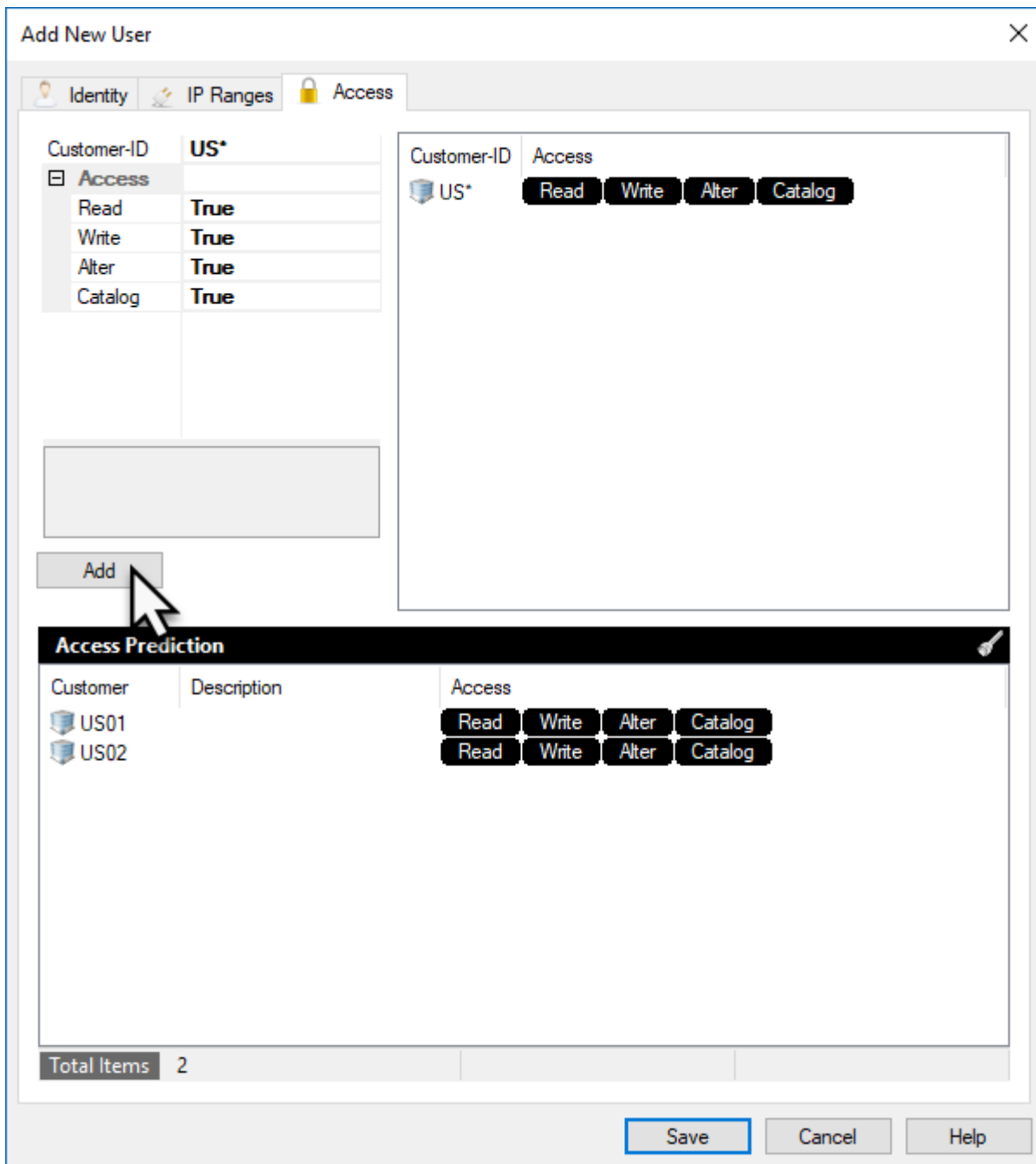


To add or delete, right-click the window and select from the menu.

Global Access (0.0.0.0) will allow access from any IP.

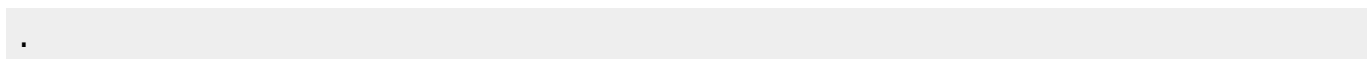
Access

The Access tab sets permissions for which Customers the selected User can access and how that User can interact with Volumes in the selected Customer.

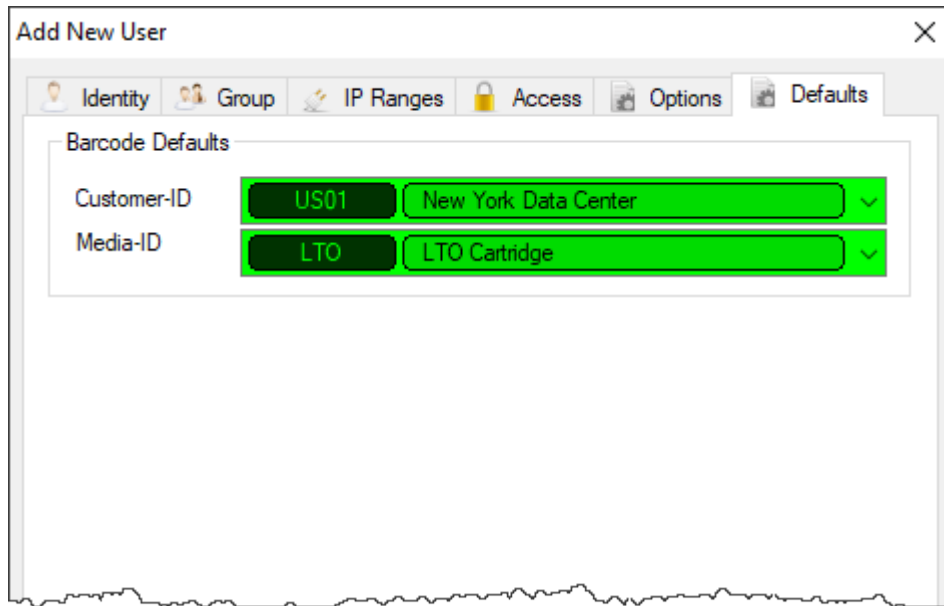


- **Customer ID:** Enter the Customer-ID for the Customer that the User should have access to.
 - US01 will give access to US01 only
 - US* will give access to all customers starting with US
 - * will give access to all customers
- **Read:** Allows the User to view but not update Volumes in the above Customer. Must be enabled for the User to be able to view Volumes in the selected Customer ID.
- **Write:** Allows the User to perform basic operations for Volumes to the selected Customer.
- **Alter:** Allows the User to Add and Delete Media and Volumes to the selected Customer.
- **Catalog:** Allows User to access Catalog information on the selected Customer.

For each Customer access, click Add to commit the data. Predicted access rights will then be displayed in the lower window.



Defaults



The screenshot shows a window titled "Add New User" with a close button (X) in the top right corner. Below the title bar is a tabbed interface with tabs for "Identity", "Group", "IP Ranges", "Access", "Options", and "Defaults". The "Defaults" tab is active, showing a section titled "Barcode Defaults". This section contains two rows of configuration options:

Field	Value 1	Value 2
Customer-ID	US01	New York Data Center
Media-ID	LTO	LTO Cartridge

Once all information is correct and complete click Save to create new user. Repeat instructions above to add more user-ID's or click the X at the top right corner to close the **User Administration** window.

[Troubleshooting: Add user errors](#)

From:

<https://rtfm.tapetrack.com/> - **TapeTrack Documentation**

Permanent link:

<https://rtfm.tapetrack.com/master/user?rev=1547777554>

Last update: **2025/01/21 22:07**

