

Adding and Updating User Information

To be able to login to a TapeTrack Framework Server, you must have a [User-ID](#) and password.

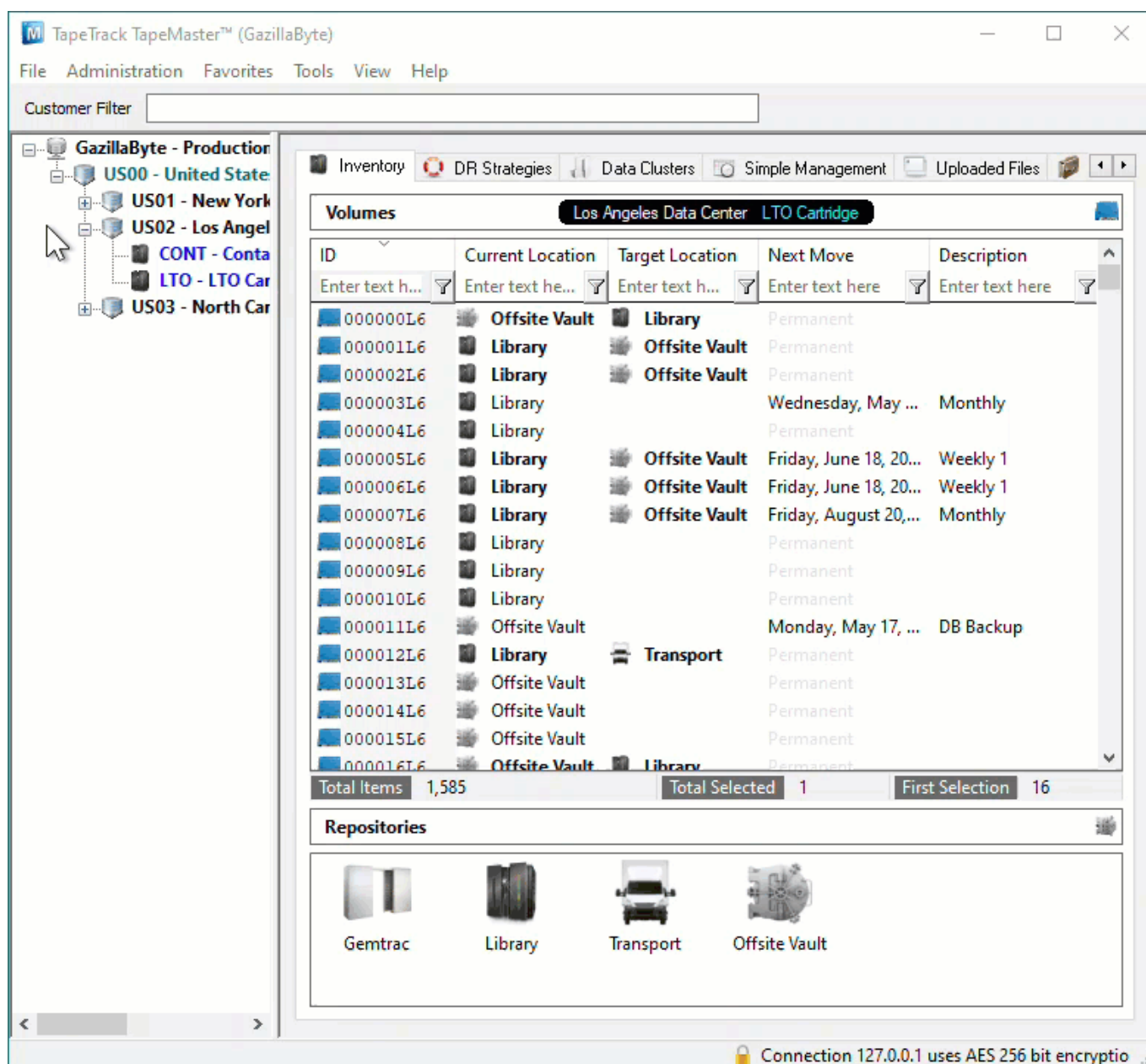
This section describes how to create a new User-ID and set Attributes for that User-ID.

Group/User Administration

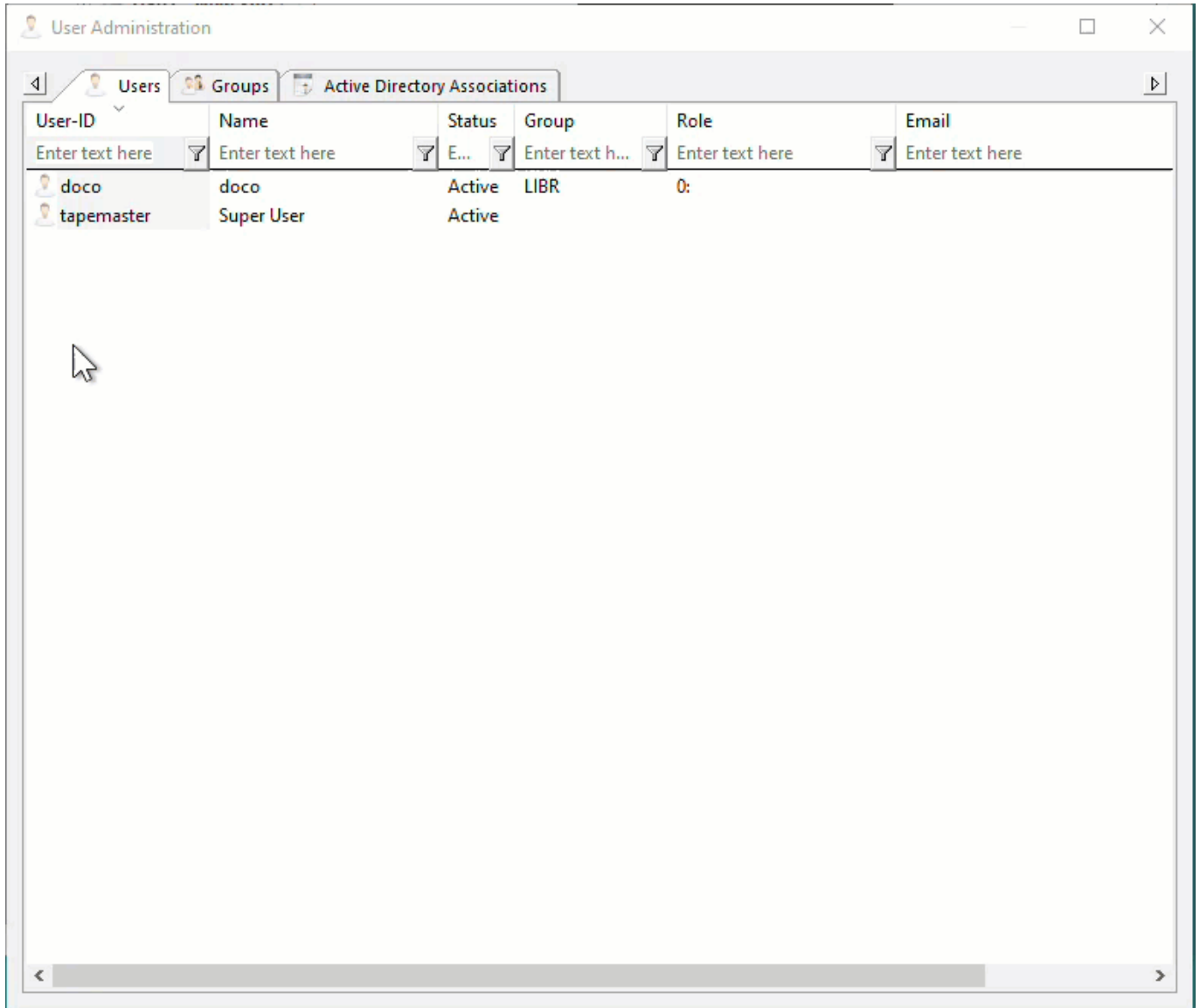
From the main menu select Administration → Group/User Administration.



If the menu option **Administration** is greyed out and inaccessible, you do not have sufficient privileges (tapemaster rights) to add Users



To add a new User, right-click in the white space on the User Administration screen and select Add.



To update an existing User, double-click on that User or right-click and select Properties.

The Add New User window will display three tabs:

- Identity
- IP Ranges
- Access

Identity

The screenshot shows the 'Add New User' dialog box with the 'Identity' tab selected. The dialog has three tabs: 'Identity', 'IP Ranges', and 'Access'. The 'Identity' tab contains the following fields:

Identity	
ID	
Name	
Group	
ID	
Options	
Administrative rights	False
Scan-In Only	False
Disabled	False
No Scanner	False
No Time-Out	False
tapemaster rights	False
Allow access inheritance	False
Certify	False
AD Domain	
Require AD Group	False
Client Access	
TapeMaster	True
Lite	True
Checkpoint	False
Sync	True
Details	
Email Address	
Description	
Defaults	
Customer-ID	<No Selection>

At the bottom of the dialog, there are three buttons: 'Save', 'Cancel', and 'Help'.

The Identity tab provides fields to update the:

- **Identity**
 - **User-ID:** The User-ID will be the user name that the user uses to login to TapeTrack products.
 - **Name:** The name is the User's desired display name.
- **Group**
 - **Group-ID:** Select group to assign user to from the drop-down list or [add new group](#).
 - **Role:** Hierarchical role of the User.
- **Options**
 - **Administrative rights:** When set to True the User will have Administration Rights with Server Administrator privileges or the ability to Add/Delete Customers and Media Types.
 - **Scan-In Only:** When set to True the User will only be able to Scan tapes into the system.
 - **Disabled:** When set to True the User's access will be in a disabled status, so that they are not able to access any TapeTrack products. This does not delete the User.
 - **No Scanner:** When set to True the Barcode Scanning Window will provide an auto-

- complete drop-down.
- **No Time-Out:** By default, all User's are logged out of TapeMaster after ten minutes of inactivity. Setting this to True, the selected User will not time out.
- **tapemaster rights:** When set to True, it allows the User to gain the same administrative rights as the tapemaster superuser account. Only the User-ID tapemaster can add tapemaster rights to another user.
- **Allow access inheritance:** Allows User to inherit another User's access rights using variable [TMSSUSERINHERIT](#) with [Command Line Utility Programs](#)
- **Certify:** Assigns the ability to [generate certificates](#).
- **AD Domain:** This is required if the User logs on to TapeTrack with their Active Directory Username and Password.
- **Require AD Group:** When set to True, the User must use their [Active Directory](#) credentials to logon.
- **Client Access**
 - **TapeMaster:** Authorizes User-ID access to TapeMaster
 - **Lite:** Authorizes User-ID access to Lite
 - **Checkpoint:** Authorizes User-ID access to Checkpoint
 - **Sync:** Authorizes User-ID access to Sync software.
- **Details**
 - **Email Address:** Allows inclusion of user email, which may be used instead of username to log into TapeTrack directly (ie not using Active Directory)
 - **Description:** Add description to User-ID.
- **Defaults**
 - **Customer-ID:** Sets Customer-ID for User in Scan-In window. Once Customer-ID is set, Media-ID field will be displayed.
 - **Media-ID:** Sets Media-ID for User in Scan-In window.



If using windows Active Domain to log into TapeTrack, the username must match your AD username

IP Ranges

The IP Ranges tab sets restrictions on which IP addresses a User can access the TapeTrack Server from.



To add or delete, right-click the window and select from the menu.

Global Access (0.0.0.0) will allow access from any IP.

Access

The Access tab sets permissions for which Customers the selected User can access and how that User can interact with Volumes in the selected Customer.



- **Customer-ID:** Enter the Customer-ID for the Customer that the User should have access to.
 - US01 will give access to US01 only
 - US* will give access to all customers starting with US
 - * will give access to all customers
- **Read:** Allows the User to view but not update Volumes in the above Customer. Must be enabled for the User to be able to view Volumes in the selected Customer-ID.
- **Write:** Allows the User to perform basic operations for Volumes to the selected Customer.
- **Alter:** Allows the User to Add and Delete Media and Volumes to the selected Customer.
- **Catalog:** Allows User to access Catalog information on the selected Customer.

For each Customer access, click Add to commit the data. Predicted access rights will then be displayed in the lower window.

Once all data has been entered, click Save to create User.

[Troubleshooting: Add user errors](#)

From:

<https://rtfm.tapetrack.com/> - **TapeTrack Documentation**

Permanent link:

<https://rtfm.tapetrack.com/master/user?rev=1616710790>

Last update: **2025/01/21 22:07**

