

# Date Aging - Birthday

Displays a table and bar graph of selected **Volumes** birthday or creation date otherwise referred to as the date the **Volumes** were initially added to TapeTrack.

## Selecting Volumes for Display

Select all **Volumes** by right-clicking in the Inventory window and select **Select→All**, or using **shift+click** and/or **control+click** select the range of **Volumes** required.

The screenshot shows the TapeTrack TapeMaster™ (GazillaByte) interface. The main window displays the Inventory window for the Los Angeles Data Center LTO Cartridge. The table below shows the selected volumes:

ID	Current Location	Target Location	Flags	Next Move	Description
000000L6	Library		Cn	Permanent	
000001L6	GemTrac		Cn	Permanent	
000002L6	Library		Cn	Permanent	
000003L6	Offsite Vault	GemTrac	CMn	Permanent	
000004L6	Offsite Vault	GemTrac	CMnN	Permanent	Friday Backup
000005L6	Offsite Vault		CDnNO	Friday, October 29, ...	Friday Backup
000006L6	Library	Offsite Vault	CDMnN	Thursday, March 17...	Monthly January
000007L6	Offsite Vault		CDnO	Wednesday, Octob...	
000008L6	Library		Cn	Permanent	
000009L6	Offsite Vault		CDnNO	Friday, March 25, 20...	Friday Backup
000010L6	GemTrac		Cn	Permanent	
000011L6	Library		Cn	Permanent	
000012L6	Library		Cn	Permanent	
000013L6	GemTrac		Cn	Permanent	
000014L6	Offsite Vault		CnO	Permanent	
000015L6	Library		Cn	Permanent	
000016L6	GemTrac		Cn	Permanent	
000017L6	Offsite Vault		CDnO	Friday, March 25, 20...	
000018L6	Offsite Vault		CDnO	Friday, March 25, 20...	
000019L6	Offsite Vault		CDnO	Friday, March 25, 20...	
000020L6	Offsite Vault		CDnO	Friday, March 25, 20...	

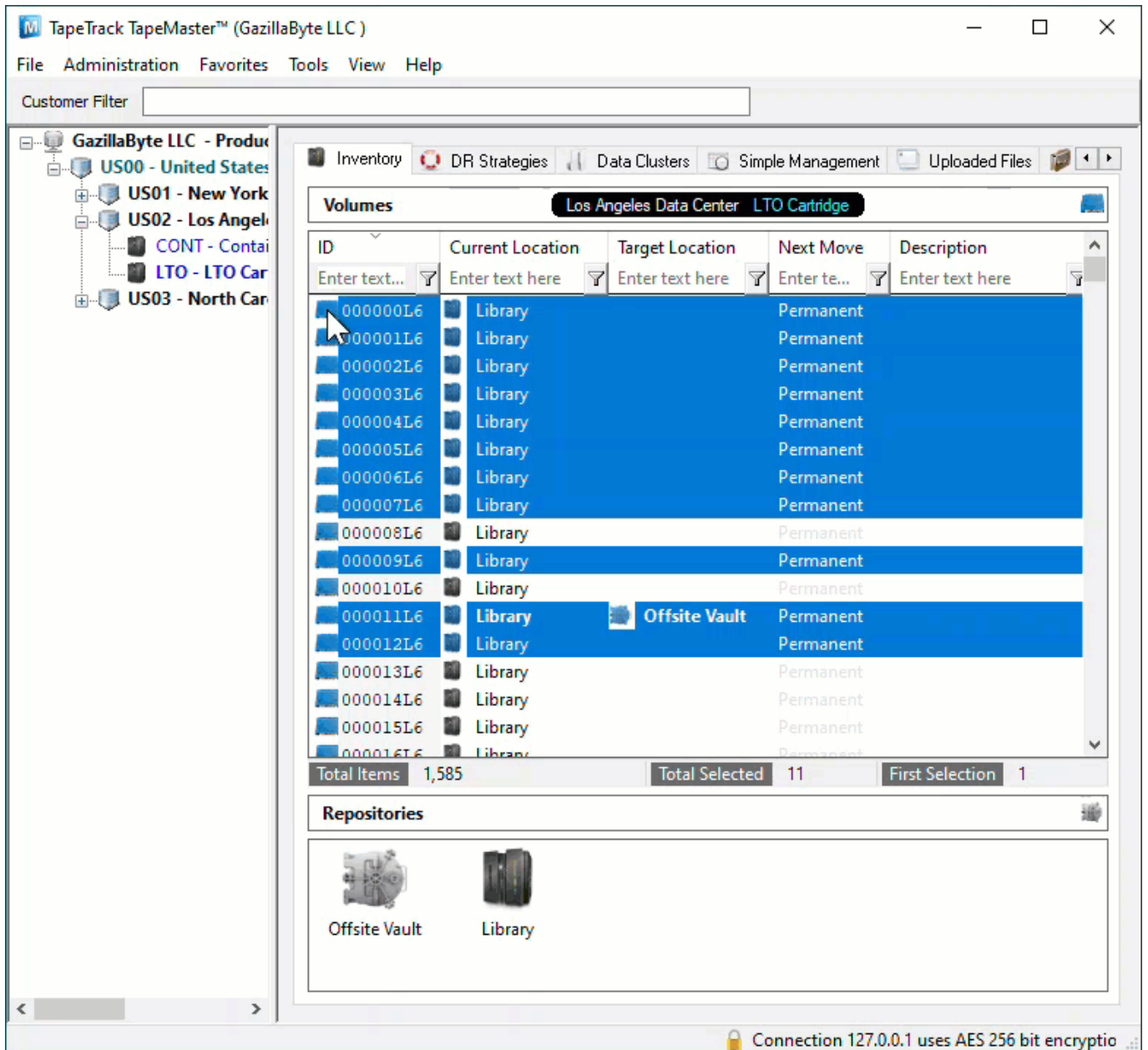
The interface also shows a tree view on the left with the following structure:

- GazillaByte - Production
  - US00 - United State
    - US01 - New York
    - US02 - Los Ange
    - CONT - Cont:
      - LTO - LTO Ca
    - US03 - North Car

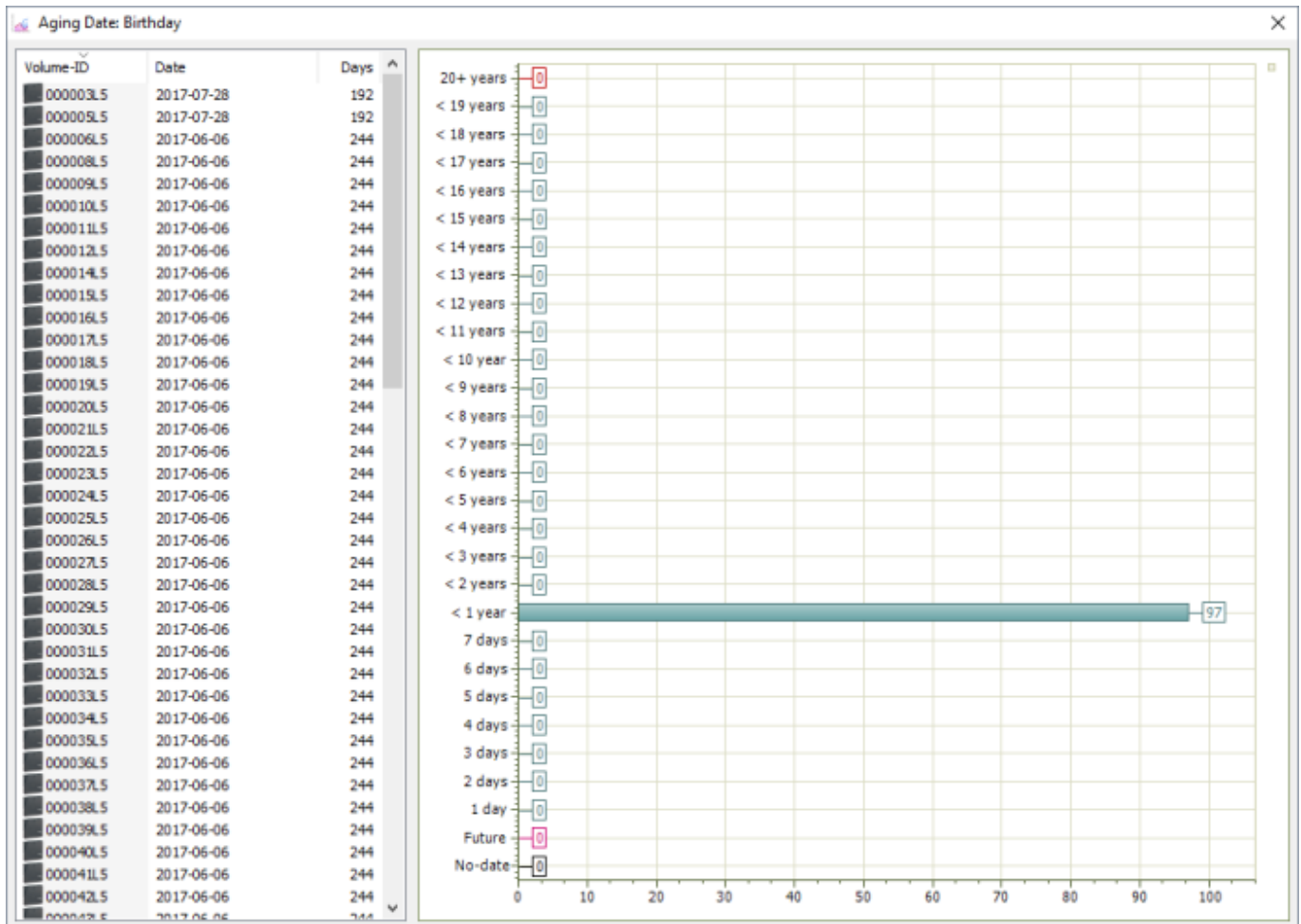
The status bar at the bottom indicates: Connection 127.0.0.1 uses AES 256 bit encryption and Tape.

## Display Volume Birthday

Right-click the selected volumes and click **View→Date Aging→Birthday**.



Volumes and associated information can be reordered by Volume-ID, Date created or Days since creation by clicking on column headings. Clicking on the same heading will change the displayed order between ascending and descending order.



## Right-Click Options

Right-clicking in the table (left) side of the report gives you the options:

- Edit
  - Copy: Copies the selected Volume-ID's to the clipboard.
- Export
  - To Email: Adds a fixed with text file with Volume-IDs, Date and number of days until expiry to email
  - To Text File: Exports Volume-IDs, Date and number of days until expiry to fixed width text file.
- Copy Column
  - Volume - ID: Copies Volume-ID values to windows clipboard.
  - Date: Copies Date values to windows clipboard.
  - Days: Copies Days values to windows clipboard.
- Export (Ctrl+E): Exports data to file.
- Filters
  - Clear All (Ctrl+F): Clears Filter values.
  - Restore (Ctrl+L): Restore Filter values from file.
  - Save (Ctrl+K): Save Filter values to file.
- Print (Ctrl+P): Prints selected **Volumes** to PDF.
- Select
  - All (Ctrl+A): Select all **Volumes**.

- Invert (Ctrl+I): Invert selected [Volumes](#).
- Random (Ctrl+R): Select a [User](#) set number of random [Volumes](#).
- View
  - Icon (Ctrl+1): Set inventory view to Icons.
  - List (Ctrl+2): Set inventory view to List.
  - Report (Ctrl+3): Set inventory view to Report.
  - Small Icon (Ctrl+4): Set inventory view to Small Icons.

Click the X in the top right of the window to close.

From:

<https://rtfm.tapetrack.com/> - **TapeTrack Documentation**

Permanent link:

[https://rtfm.tapetrack.com/master/view/date\\_birthday?rev=1612996387](https://rtfm.tapetrack.com/master/view/date_birthday?rev=1612996387)

Last update: **2025/01/21 22:07**

