

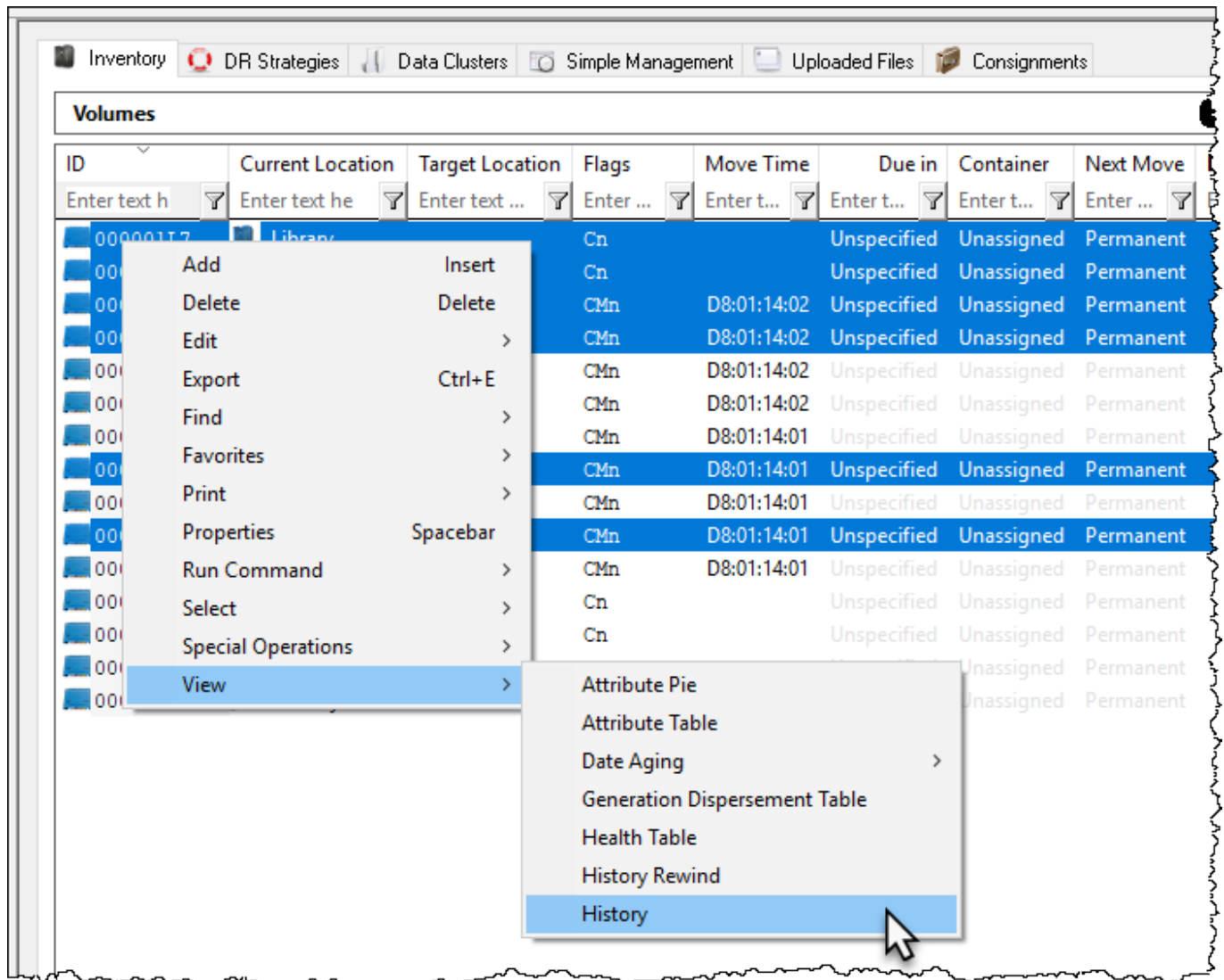
# Volume History Table

The Volume History Table displays in a table format. Volumes are displayed in ID order by default.

## Selecting Volumes for Display

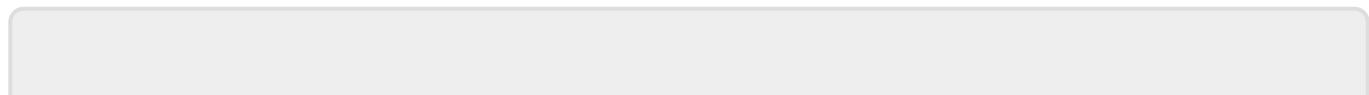
Select all volumes by right clicking in the inventory window and select **Select→All**, or using **shift+click** and/or **control+click** select the range of tapes required.

Right click the selected volumes and click **View→History**.



Displayed data can be filtered by using the TapeTrack [String Filters](#)

Click the X in the top right of the window to close.



From:

<https://rtfm.tapetrack.com/> - **TapeTrack Documentation**

Permanent link:

<https://rtfm.tapetrack.com/master/view/history?rev=1536799240>

Last update: **2025/01/21 22:07**

